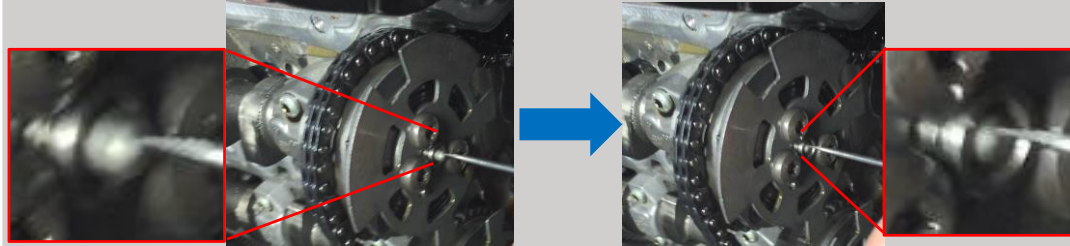


Range Rover
RR Sport
18MY with
AJ133
5.0L Engines

A Customer may complain of a Check Engine lamp illumination and or rough engine running.

DTC P0016-76 "Camshaft/Crankshaft correlation Bank 1 Sensor 1) is stored in the PCM. Misfire DTCs may also be present. Check base timing of the engine and if timing is correct, inspect the plunger of the VVT for binding. If binding is noted, replace the VVT assembly and submit an EPQR with contact information of someone at the retailer who can support PRR.



Under
Investigation