

September 18, 2018

10104 Version 2

**Hood Flutter or Vibration at Highway Speeds**

Supersedes 17-083, dated December 2, 2017, to revise the information highlighted in yellow

**AFFECTED VEHICLES**

Year	Model	Trim	VIN Range
2016-19	Pilot	ALL	ALL
2017-19	Ridgeline	ALL	ALL

**REVISION SUMMARY**

Under AFFECTED VEHICLES, 2018-19 Pilot and 2019 Ridgeline were added.

**SYMPTOM**

The hood flutters or vibrates at highway speeds.

**CORRECTIVE ACTION**

Adjust the hood edge cushions to slightly touch the hood while still maintaining proper hood alignment. Inspect the adhesive between the hood skin and the support structure. Apply 3M ULTRAPRO Autobody sealant between hood skin and support structure if needed.

**REQUIRED MATERIALS**

Part Name	Part Number	Quantity
3M Ultrapro Autobody Sealant	08302 (commercially available)	1 (One tube repairs 3 vehicles)

**PARTS INFORMATION**

Part Name	Part Number	Quantity
Insulator Clip	91502-TZ5-A01	8

**CUSTOMER INFORMATION:** The information in this bulletin is intended for use only by skilled technicians who have the proper tools, equipment, and training to correctly and safely maintain your vehicle. These procedures should not be attempted by "do-it-yourselfers," and you should not assume this bulletin applies to your vehicle, or that your vehicle has the condition described. To determine whether this information applies, contact an authorized Honda automobile dealer.

## WARRANTY CLAIM INFORMATION

The normal warranty applies.

Operation Number	Description	Flat Rate Time	Defect Code	Symptom Code	Template ID	Failed Part Number
812003	Adjust the hood edge cushions. (includes inspection)	0.3 hr	07406	06201	A17083A	60100-TG7-A90ZZ

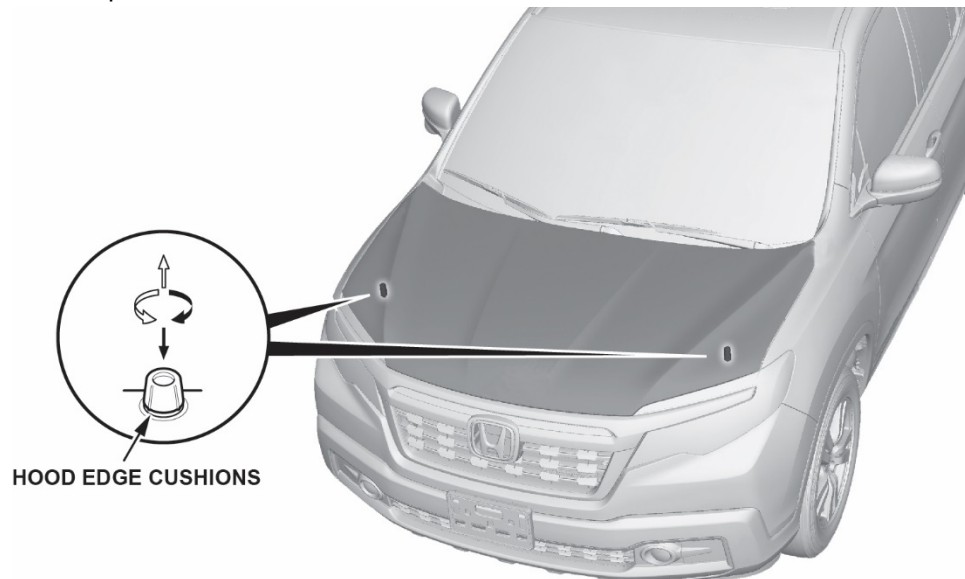
812003	Adjust the hood edge cushions. (includes inspection)	0.3 hr	07406	04201	A17083B	60100-TG7-A90ZZ
A	Apply 3M Ultrapro Autobody sealant.	0.1 hr				

Skill Level: Repair Technician

## REPAIR PROCEDURE

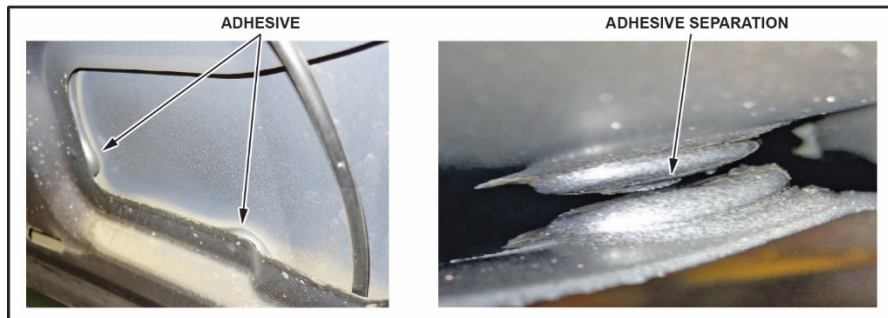
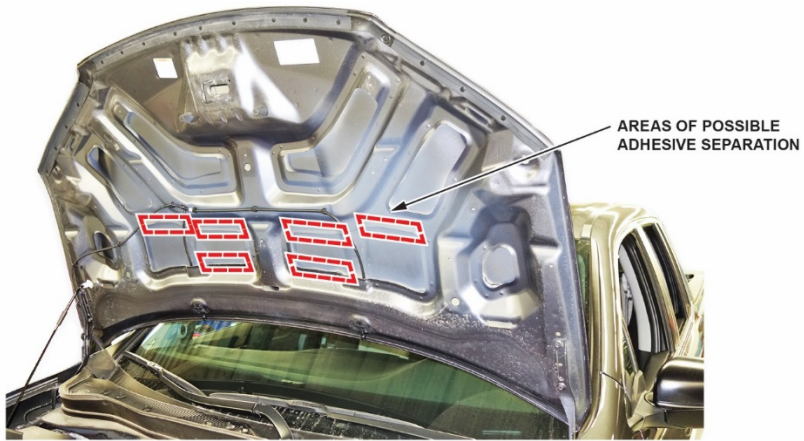
1. Turn the hood edge cushions, in or out as necessary, so they touch slightly against the hood.

NOTE: Some vehicles left the factory with the hood edge cushions in their lowest height profile, which allows the hood to pivot off the center latch and bounce from side to side.



2. Open the hood and remove the hood insulator (8 clips).

3. Inspect the areas shown designated with red boxes for adhesive separation between the hood skin and the support structure.



4. If separation is found, apply 3M Ultrapro sealant between the frame and the hood skin.
  5. Install the hood insulator and replace any stressed or damaged clips.
- END