

- ATTENTION:**
- GENERAL MANAGER
  - PARTS MANAGER
  - CLAIMS PERSONNEL
  - SERVICE MANAGER

IMPORTANT - All Service Personnel Should Read and Initial in the boxes provided, right.


© 2018 Subaru of America, Inc. All rights reserved.



QUALITY DRIVEN® SERVICE

**SERVICE BULLETIN**

**APPLICABILITY:** 2013-2018MY BRZ

**NUMBER:** 12-250-18

**SUBJECT:** Rear Bumper Cover- Design Change

**DATE:** 08/24/18

**INTRODUCTION:**

This bulletin announces a design change made to the rear bumper cover (face). To insure a proper fit of the new cover, the rear edge portion of the existing inner mud guards (splash shields) will need to be modified slightly in specific areas. In addition, plastic arch caps (plugs) are inserted into unused holes in the rear wheel arch lip of the new cover to fill unused mounting holes for optional accessory mud guards when not installed.

**PRODUCTION CHANGE INFORMATION:**

The new rear bumper cover and corresponding inner mud guards were incorporated at the start of 2019MY production.

**PART INFORMATION:**

Description	Part Number
BUMPER-FACE REAR	57704CA011
ARCH CAP R SET	57756CA020NN
MUD GUARD, REAR RIGHT	59122CA003
MUD GUARD, REAR LEFT	59122CA013

*Continued...*

**CAUTION: VEHICLE SERVICING PERFORMED BY UNTRAINED PERSONS COULD RESULT IN SERIOUS INJURY TO THOSE PERSONS OR TO OTHERS.**

Subaru Service Bulletins are intended for use by professional technicians ONLY. They are written to inform those technicians of conditions that may occur in some vehicles, or to provide information that could assist in the proper servicing of the vehicle. Properly trained technicians have the equipment, tools, safety instructions, and know-how to do the job correctly and safely. If a condition is described, DO NOT assume that this Service Bulletin applies to your vehicle, or that your vehicle will have that condition.

**Subaru of America, Inc. is ISO 14001 Compliant**

ISO 14001 is the international standard for excellence in Environmental Management Systems. Please recycle or dispose of automotive products in a manner that is friendly to our environment and in accordance with all local, state and federal laws and regulations.

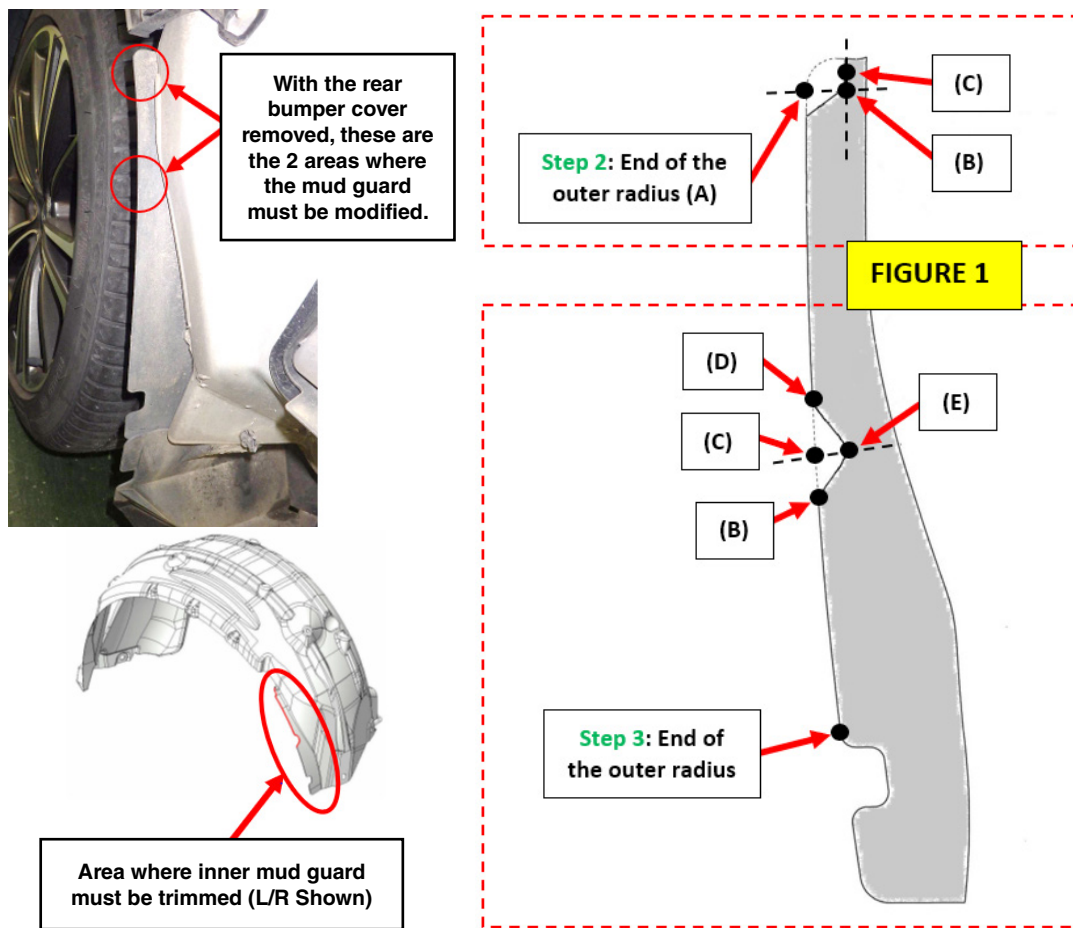
## SERVICE PROCEDURE / INFORMATION:

**REMINDER:** Customer satisfaction and retention starts with performing quality repairs. The service procedures for replacing the rear bumper cover remain unchanged other than the trimming necessary to the existing inner mud guards and installation of the wheel arch caps as outlined below. Always refer to the applicable Service Manual and review the full requirements of the repair being performed. The Service Manual procedures contain information critical to performing an effective repair the first time and every time. This includes but is not limited to: important SAFETY precautions, proper inspection criteria, necessary special tools, required processes and related one-time-use parts needed for a complete and lasting repair.

## TOOLS REQUIRED:

- Permanent Marker (to mark the inner mud guards)
- Sharp scissors or shears (to cut / trim the inner mud guards)
- Round (rat tail) file (5mm diameter)
- Precision ruler (measure in millimeter (mm) increments).

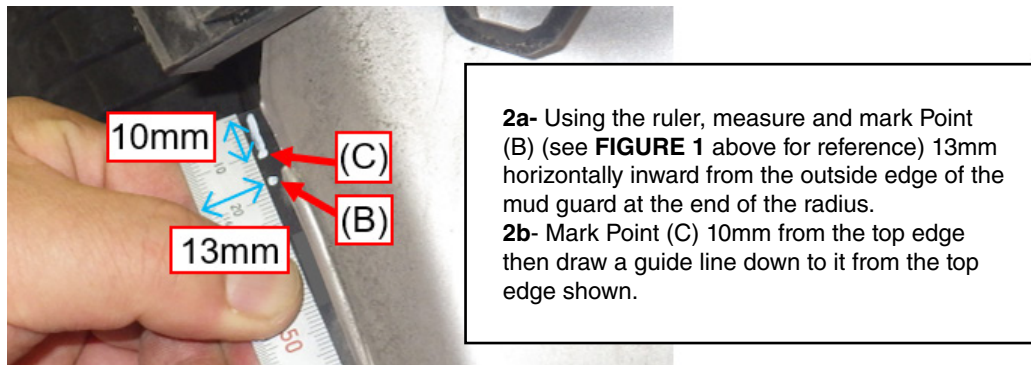
**NOTE:** For this procedure, all illustrations and photos will show the left rear (L/R) of the vehicle. The procedure and measurements are unchanged to complete the procedure on the right side.



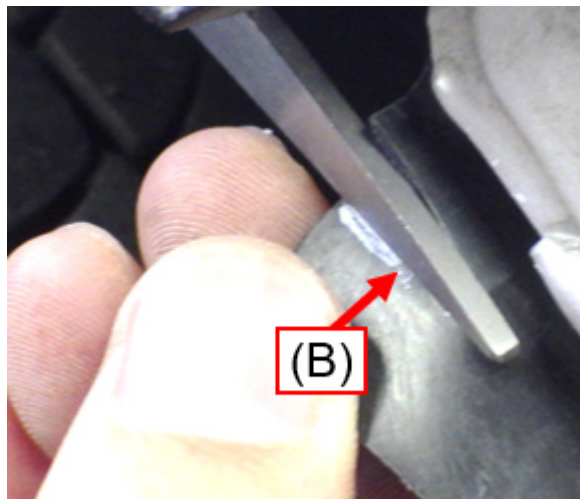
*Continued...*

**Step 1:** Remove the rear bumper cover following the procedure in the applicable Service Manual. This will expose the outer edge portions of the inner mud guards which will need to be trimmed to allow for a proper fit of the new bumper cover as shown in the steps below.

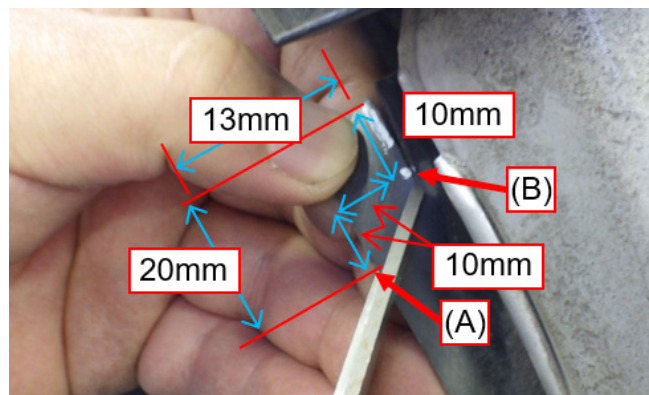
**Step 2:** Using the top portion of **FIGURE 1** as a guide, measure and mark the mud guard as shown in the illustration below. Refer back to **FIGURE 1** at any time for reference or clarification.



**2c-** **CAREFULLY** cut the mud guard along the line (10mm) to Point (B) using a sharp scissor or shear. **NOTE:** Keep 10mm from the edge. If you cut 13mm or more, the mud guard will not overlap properly with the wheel arch lip of the new bumper cover and likely create a gap.

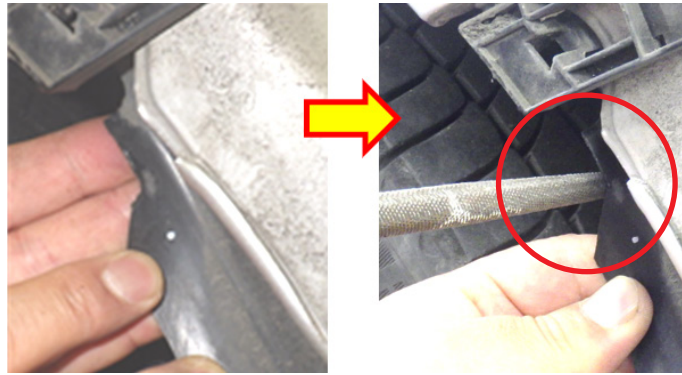


**2d-** As shown below, place a mark 20mm down from the top outer edge of the mud guard to (A) then **CAREFULLY** cut from Point (A) up to Point (B).

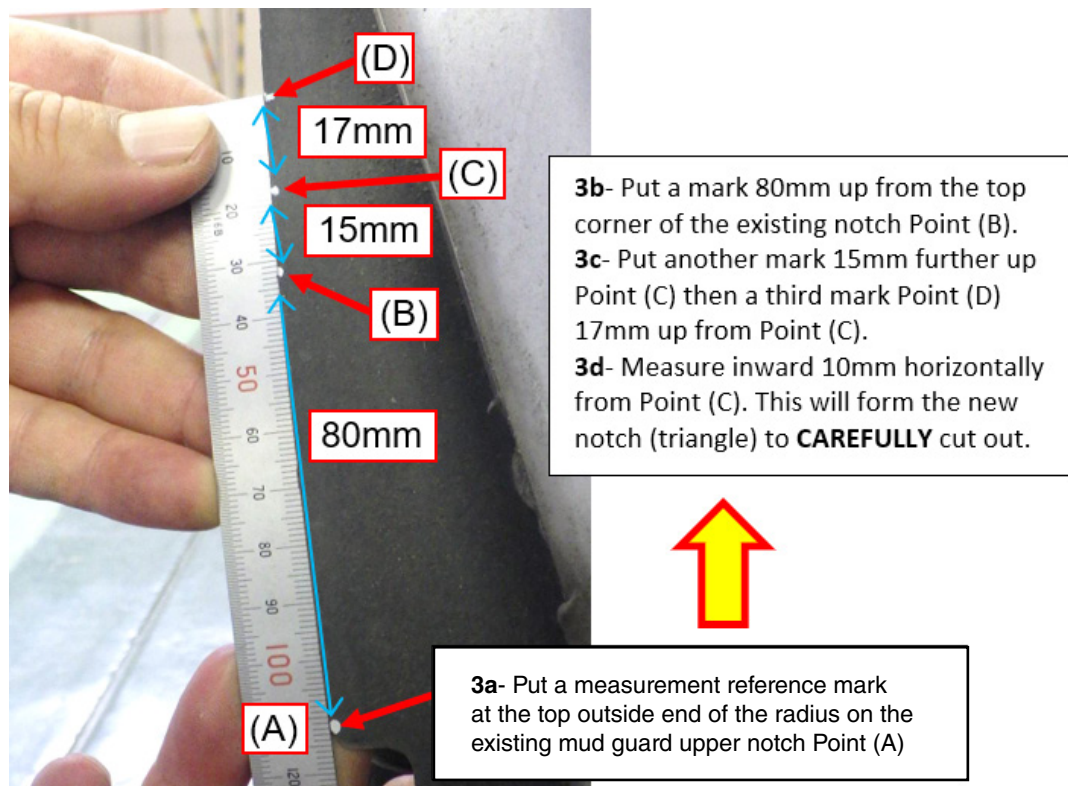


*Continued...*

2e- Remove the trimmed material then use a round file to remove any sharp edges and smooth the new inside corner.

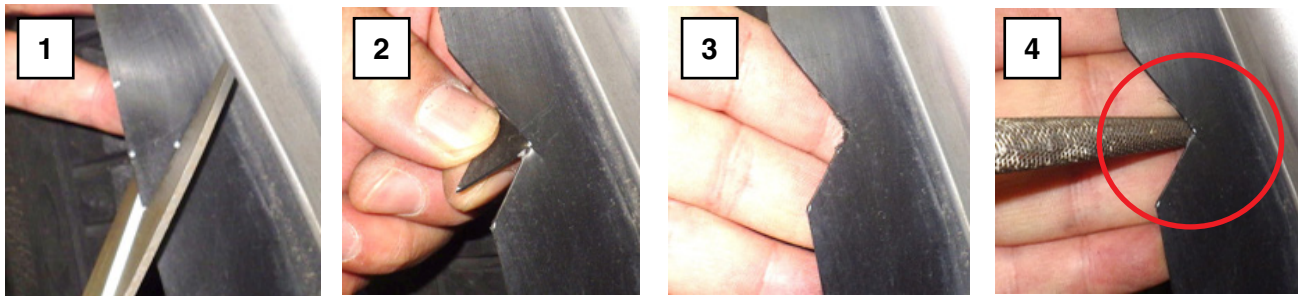
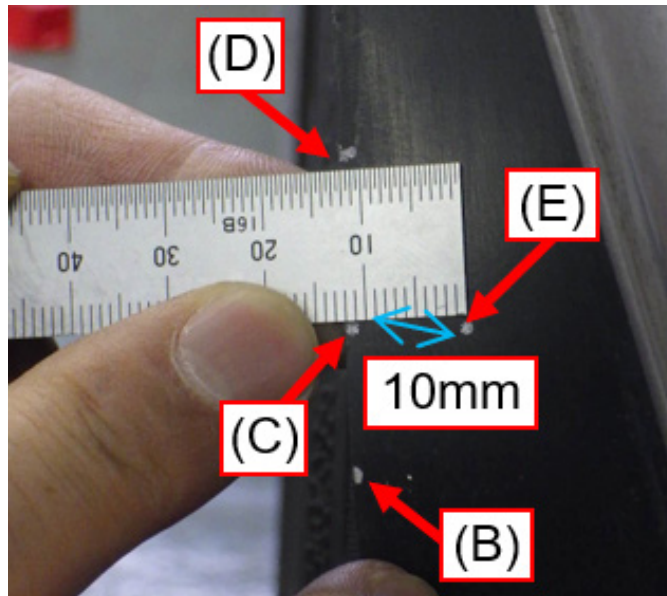


**Step 3:** Using the lower portion of **FIGURE 1** as a guide, mark Points (B), (C) and (D) as shown in the picture below.



3e- Mark Point (E) 10 mm horizontally inward from Point (C) on the mud guard. **CAREFULLY** cut and remove the triangle portion and smooth the edges as shown in the sequence below.

*Continued...*



**Step 4:** Perform Steps 2 and 3 as outlined above on the opposite side mud guard.

**Step 5: NOTE:** When painting the new rear bumper cover, always paint the new arch caps at the same time to insure color match. Install the new rear bumper cover in reverse order of removal. Install the new arch caps into the unused holes in the wheel arch lip to complete the repair.

**WARRANTY / CLAIM INFORMATION:**

For vehicles within the Basic New Car Limited Warranty period, this repair may be submitted using the following claim information:

Labor Description	Labor Operation #	Labor Time	Fail Code
REAR BUMPER COVER R&R (Includes mud guard modifications on both sides)	B916-121	0.8	XLO-48
REAR BUMPER COVER REFINISH	C916-100	1.7	
SUBLET REPAIR-ADMINISTRATION EXPENSES	C101-108	0.3	

**IMPORTANT REMINDERS:**

- SOA strongly discourages the printing and/or local storage of service information as previously released information and electronic publications may be updated at any time.
- Always check for any open recalls or campaigns anytime a vehicle is in for servicing.
- Always refer to STIS for the latest service information before performing any repairs.