



SERVICE BULLETIN

Classification: AT18-003a	Reference: NTB18-058a	Date: August 17, 2018
------------------------------	--------------------------	--------------------------

2015 SENTRA; ENHANCED DIAGNOSTIC LOGIC FOR CVT

This bulletin has been amended to correct the part numbers in Table A. No other changes have been made. Please discard all previous versions of this bulletin.

APPLIED VEHICLES: 2015 Sentra (B17)

IF YOU CONFIRM

The customer reports a transmission judder (shake, shudder, single or multiple bumps or vibration), hesitation on acceleration, lack of power or RPM flare.

NOTE:

- A new diagnostic logic has been established to enhance the diagnostic process by storing a diagnostic trouble code (DTC) on Applied Vehicles.
 - New DTC: **P17F0** (CVT_JUDDER [T/M INSPECTION]); P17F0 will not turn the MIL ON.
- This new diagnostic logic will monitor conditions in the CVT while the customer is operating their vehicle in their usual daily drive patterns.
- If P17F0 stores, refer to NTB17-034 for repair information.

ACTION

1. Refer to page 4, step 6 in the **SERVICE PROCEDURE** to confirm this bulletin applies to the vehicle you are working on.
2. If this bulletin applies, reprogram the **TCM** (Transmission Control Module).

Nissan Bulletins are intended for use by qualified technicians, not 'do-it-yourselfers'. Qualified technicians are properly trained individuals who have the equipment, tools, safety instruction, and know-how to do a job properly and safely. **NOTE:** If you believe that a described condition may apply to a particular vehicle, DO NOT assume that it does. See your Nissan dealer to determine if this applies to your vehicle.

SERVICE PROCEDURE

IMPORTANT: Before starting, make sure:

- ASIST on the CONSULT PC has been synchronized (updated) to the current date.
- All CONSULT-III plus (C-III plus) software updates (if any) have been installed.
- The CONSULT PC is connected to the Internet (Wi-Fi or cable).

NOTE:

- Most instructions for reprogramming with CONSULT-III plus (C-III plus) are displayed on the CONSULT PC screen.

If you are not familiar with the reprogramming procedure, [click here](#). This will link you to the "CONSULT- III plus (C-III plus) Reprogramming" general procedure.

CAUTION:

- Connect the GR8 to the vehicle battery set to “power supply” mode. If the vehicle battery voltage drops below 12.0V or rises above 15.5V during reprogramming, the TCM may be damaged.
- Be sure to turn OFF all vehicle electrical loads. If a vehicle electrical load remains ON, the TCM may be damaged.
- Be sure to connect the AC Adapter. If the CONSULT PC battery voltage drops during reprogramming, the process will be interrupted and the TCM may be damaged.
- Turn OFF all external Bluetooth® devices (e.g., cell phones, printers, etc.) within range of the CONSULT PC and the plus VI. If Bluetooth® signal waves are within range of the CONSULT PC or plus VI during reprogramming, reprogramming may be interrupted and the TCM may be damaged.

1. Connect the CONSULT PC to the vehicle to begin the reprogramming procedure.
2. Start C-III plus.
3. Wait for the plus VI to be recognized.
 - The serial number will display when the plus VI is recognized.
4. Select **Re/programming, Configuration**.

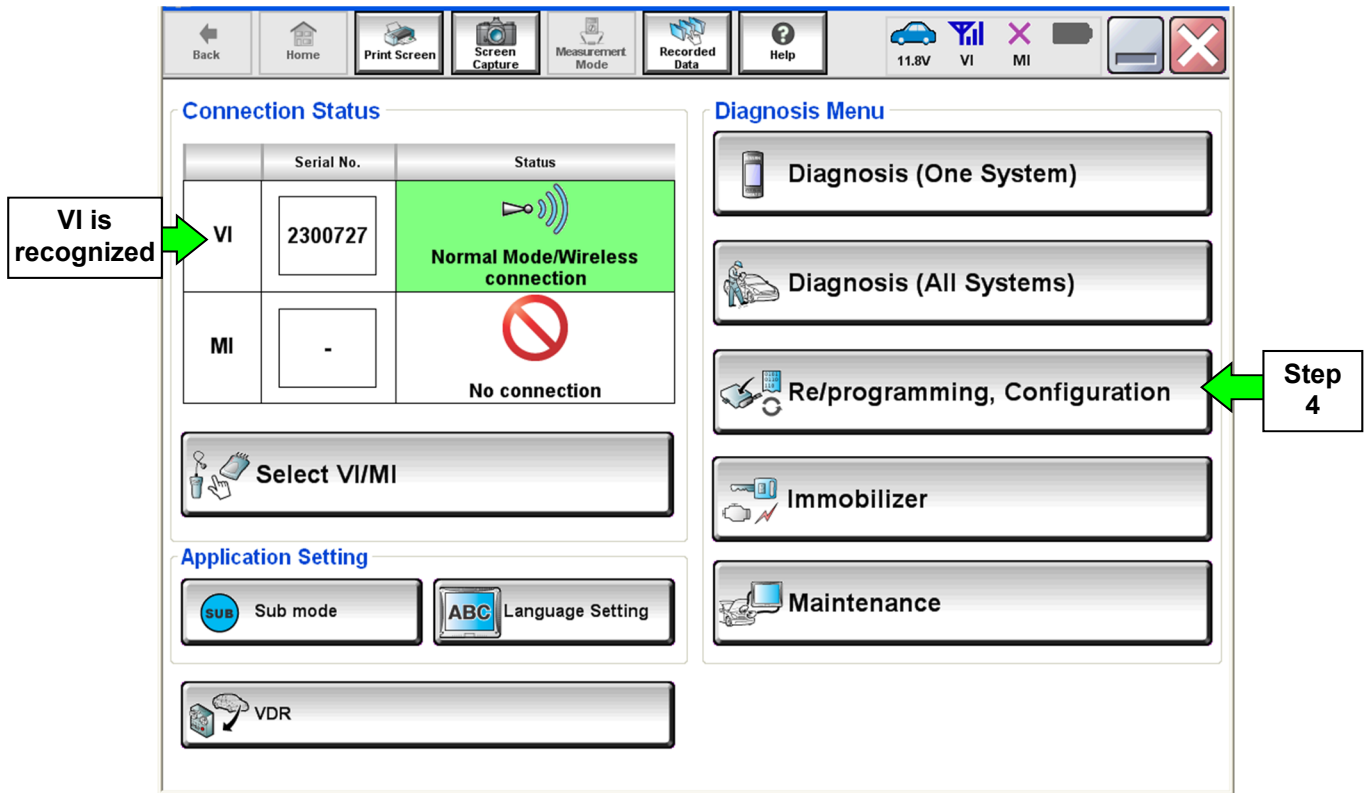


Figure 1

5. Follow the on-screen instructions and navigate the C-III plus to the screen shown in Figure 2 on the next page.

6. When you get to the screen shown in Figure 2, confirm this bulletin applies as follows.

A. Find the TCM **Part Number** and write it on the repair order.

NOTE: This is the current TCM Part Number (P/N).

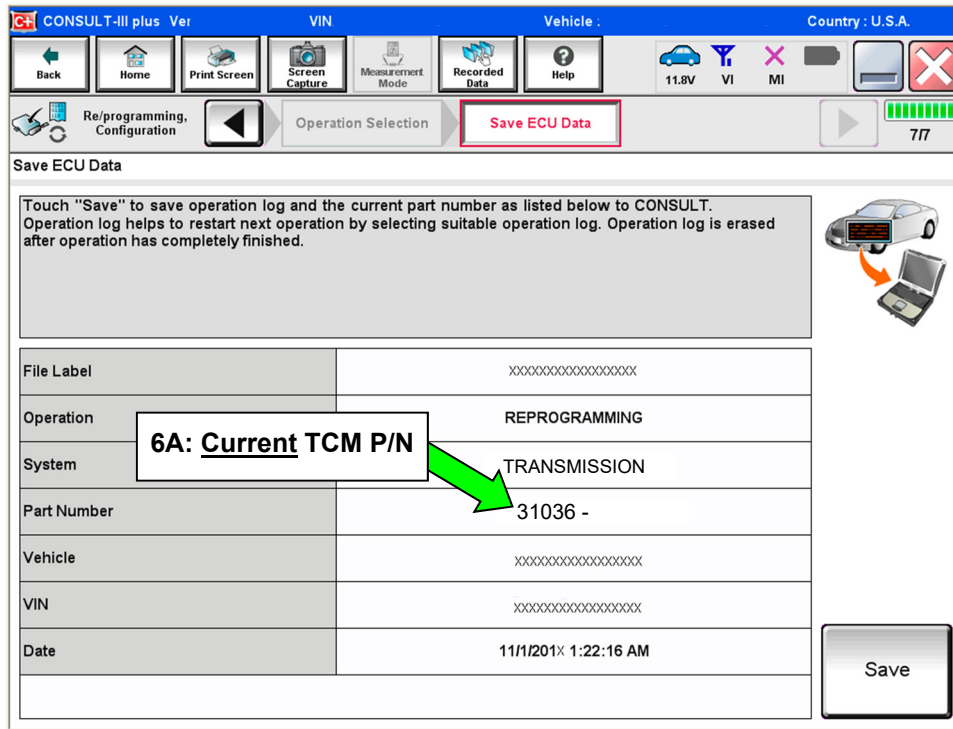


Figure 2

B. Compare the P/N you wrote down to the numbers in the **Current TCM Part Number** column in **Table A** below.

- If there is a match, this reprogramming applies. Continue with the reprogramming procedure.
- If there is not a match, this bulletin does not apply. Refer to ASIST for further diagnostic and repair information.

Table A

Model	Current TCM Part Number Before Reprogramming: 31036 -
2015 Sentra	4AT0A, 4AT0B, 4AT0C, 4AT0D
	4AT8E
	4AT9A, 4AT9D, 4AT9E

7. Follow the on-screen instructions to navigate C-III plus and reprogram the ECM.

NOTE:

- In some cases, more than one new P/N for reprogramming is available.
 - If there is more than one new P/N, the screen in Figure 3 displays.
 - Select and use the reprogramming option that **does not** have the message “Caution! Use ONLY with NTBXX-XXX”.
- If you get this screen and it is blank (no reprogramming listed), it means there is no reprogramming available for this vehicle.

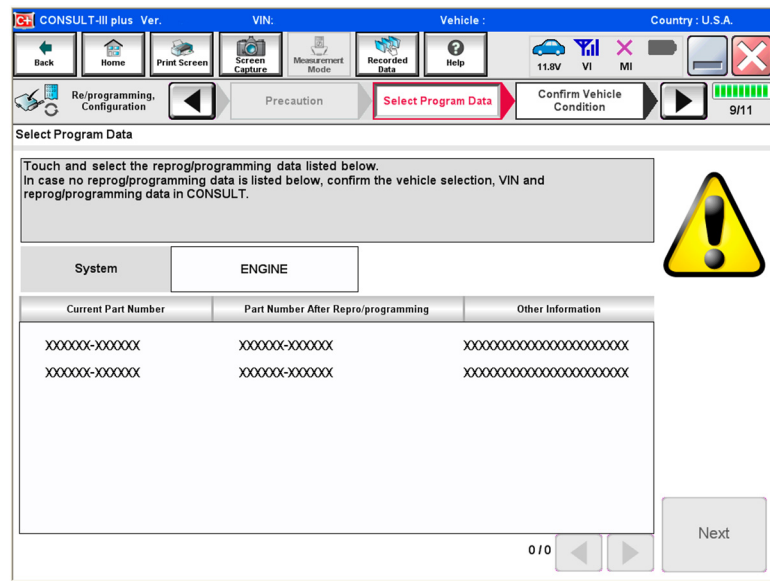


Figure 3

- Before reprogramming will start, you will be required to enter your User Name and Password.
 - The CONSULT PC must be connected to the Internet (Wi-Fi or cable).
 - If you do not know your User Name and Password, contact your Service Manager.

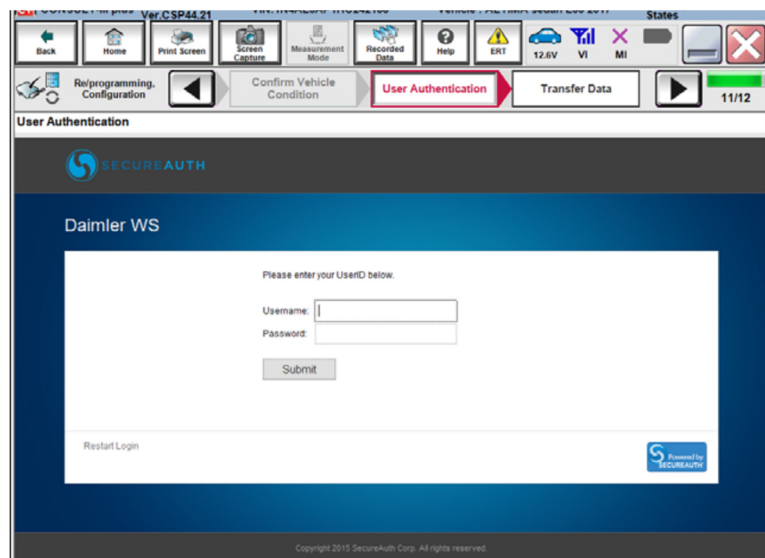


Figure 4

8. When the screen in Figure 5 displays, reprogramming is complete.

NOTE: If the screen in Figure 5 does not display (indicating that reprogramming did not complete), refer to the information on the next page.

9. Disconnect the battery charger from the vehicle.

10. Select **Next**.

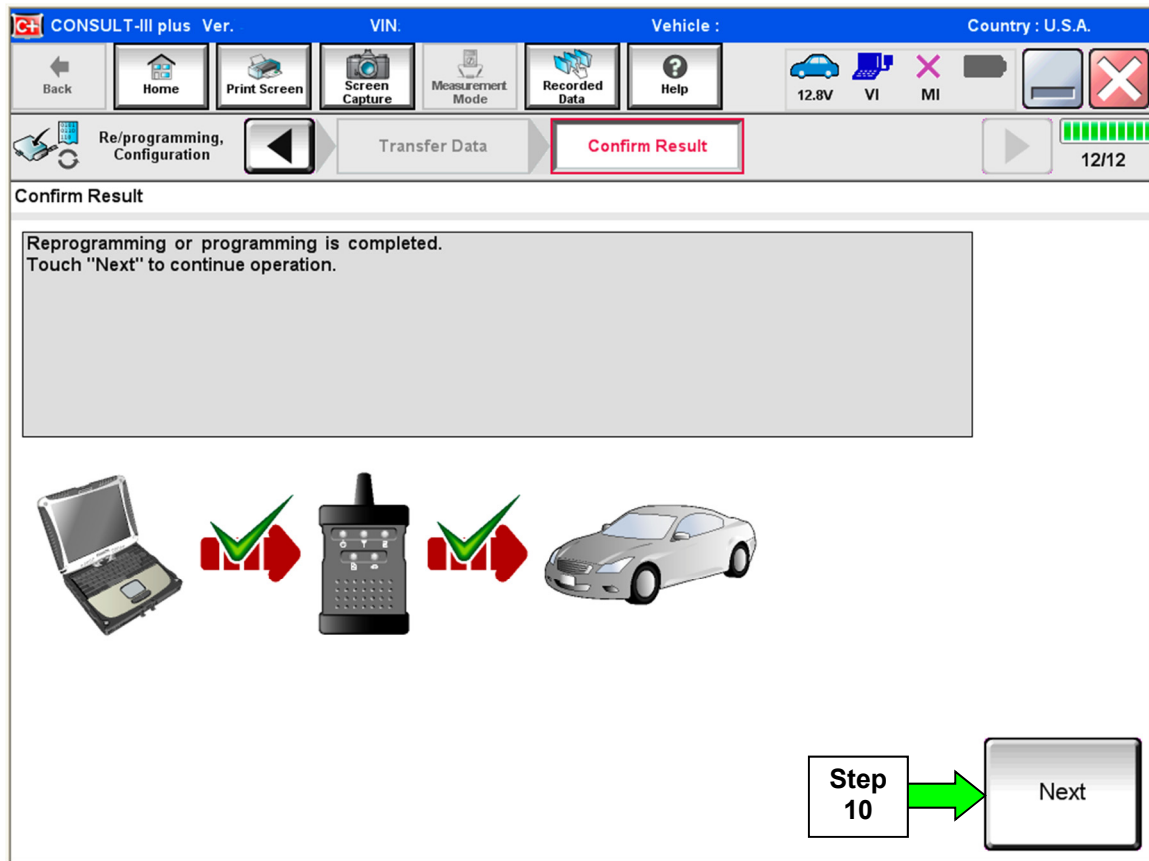


Figure 5

NOTE:

- In the next step (page 8), you will perform **Erase All DTCs**.
- DTC erase is required before C-III plus will provide the final reprogramming confirmation report.

TCM Recovery

Do not disconnect plus VI or shut down C-III plus if reprogramming does not complete.

If reprogramming does not complete and the “!” icon displays as shown in Figure 6:

- Check battery voltage (12.0–15.5 V).
- Ignition is ON, engine OFF.
- External Bluetooth® devices are OFF.
- All electrical loads are OFF.
- **Select retry and follow the on screen instructions.**
- “Retry” may not go through on first attempt and can be selected more than once.

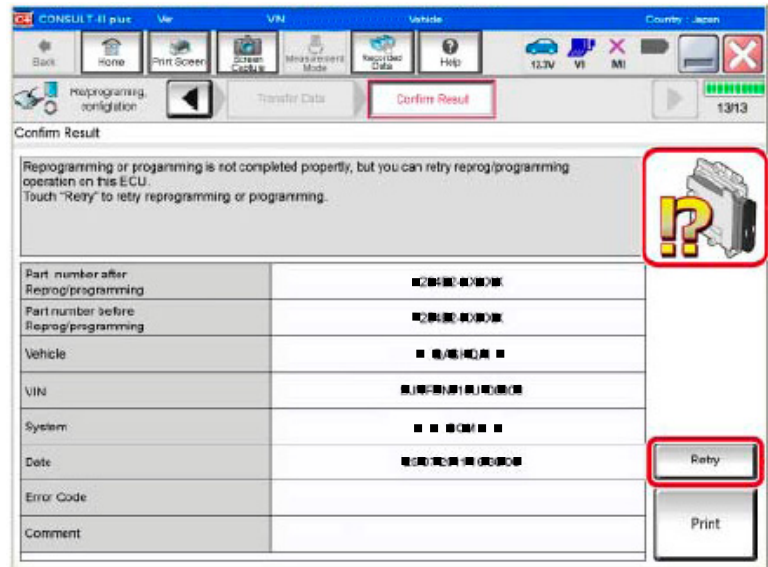


Figure 6

If reprogramming does not complete and the “X” icon displays as shown in Figure 7:

- Check battery voltage (12.0 – 15.5 V).
- CONSULT A/C adapter is plugged in.
- Ignition is ON, engine OFF.
- Transmission is in Park.
- All C-III plus / plus VI cables are securely connected.
- All C-III plus updates are installed.
- **Select Home, and restart the reprogram procedure from the beginning.**

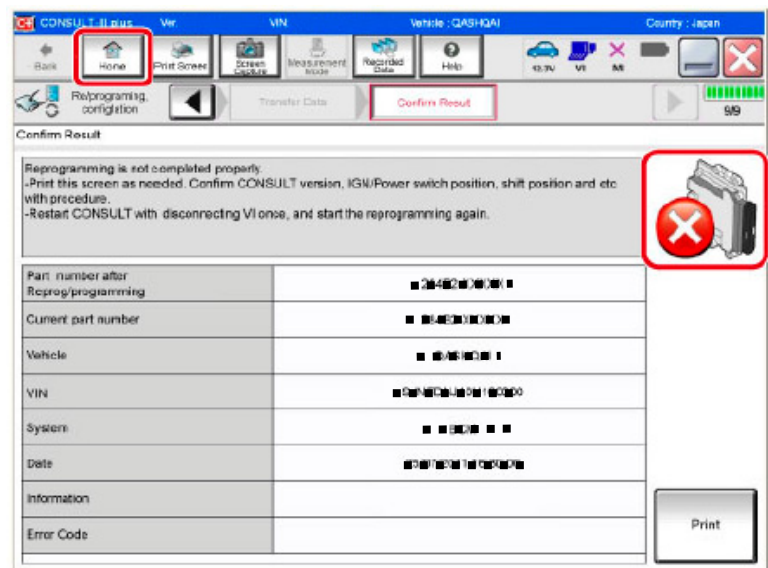


Figure 7

11. Follow the on-screen instructions to **Erase All DTCs**.
12. When the entire reprogramming process is complete, the screen in Figure 8 will display.
13. Verify the before and after part numbers are different.
14. Print a copy of this screen (Figure 8) and attach it to the repair order for warranty documentation.
15. Select **Confirm**.

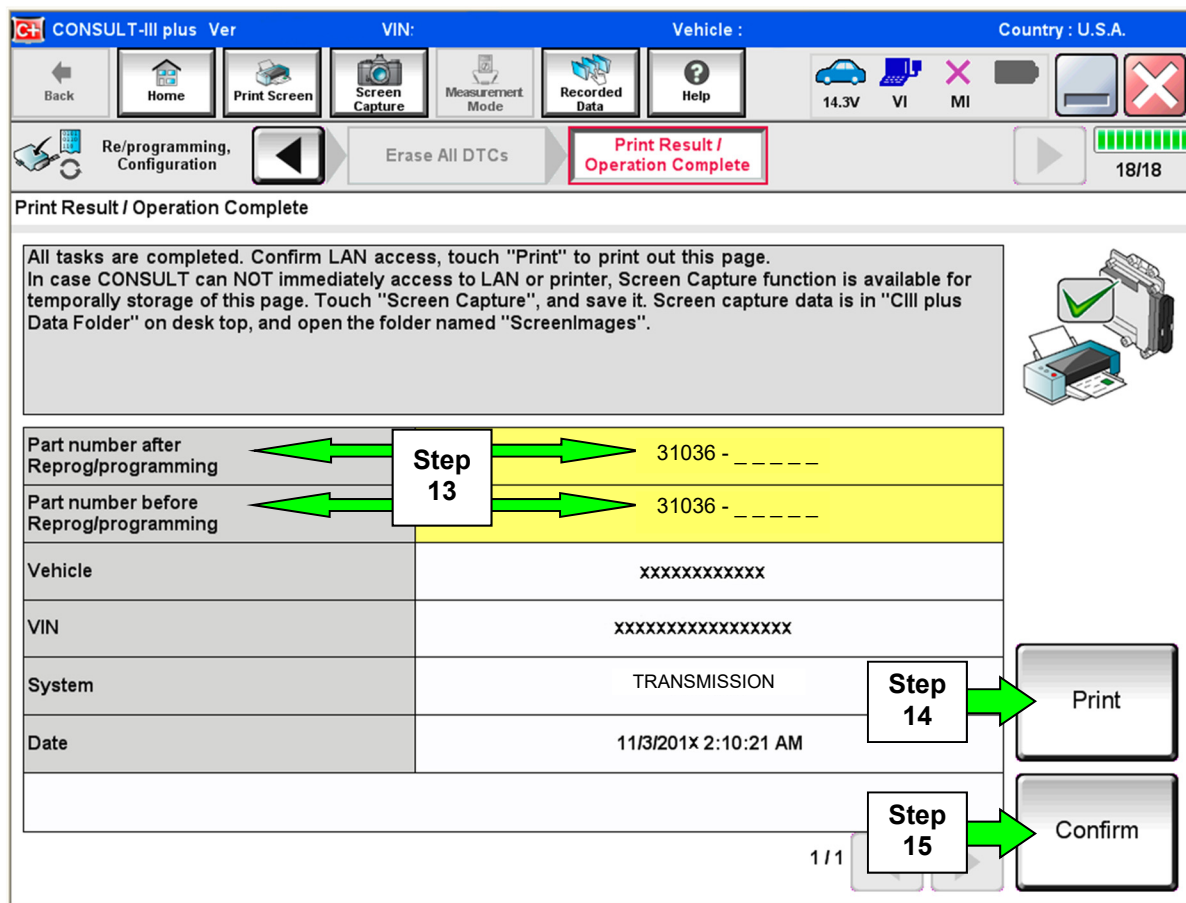


Figure 8

16. Close C-III plus.
17. Turn the ignition OFF.
18. Disconnect the plus VI from the vehicle.

CLAIMS INFORMATION

Submit a Primary Part (PP) type line claim using the following claims coding:

DESCRIPTION	PFP	OP CODE	SYM	DIA	FRT
Reprogram Transmission Control Module	(1)	JE99AA	ZE	32	(2)

- (1) Refer to FAST and use the Transmission Control Module part number (31036-XXXXX) as the PFP.
- (2) Reference the current Nissan Warranty Flat Rate Manual and use the indicated Flat Rate Time.

