



SERVICE BULLETIN

Classification: EC13-012e	Reference: NTB13-100e	Date: June 28, 2018
------------------------------	--------------------------	------------------------

ENGINE TURNS OFF OR HESITATES WHEN ACCELERATING FROM A STOP DURING HOT AMBIENT TEMPERATURES (+100° F)

This bulletin has been amended. Table A has been revised. No other changes have been made. Please discard previous versions of this bulletin.

APPLIED VEHICLES: 2012-2017 Versa Sedan (N17)
2014-2017 Versa Note (E12)

IF YOU CONFIRM

The engine turns OFF or hesitates when accelerating from a stop during hot ambient temperatures (+100°F),

AND

The engine is able to be restarted.

ACTION

1. Refer to step 6 in the **SERVICE PROCEDURE** to see if this bulletin applies to the vehicle you are working on.
2. If this bulletin applies, reprogram the ECM.
3. For 2013 Versa Sedan only: If ECM reprogramming applies, determine if TCM reprogramming also applies.
 - Refer to page 7 in the **SERVICE PROCEDURE**.

IMPORTANT: The purpose of ACTION (above) is to give you a quick idea of the work you will be performing. You **MUST** closely follow the entire SERVICE PROCEDURE as it contains information that is essential to successfully completing this repair.

Nissan Bulletins are intended for use by qualified technicians, not 'do-it-yourselfers'. Qualified technicians are properly trained individuals who have the equipment, tools, safety instruction, and know-how to do a job properly and safely. NOTE: If you believe that a described condition may apply to a particular vehicle, DO NOT assume that it does. See your Nissan dealer to determine if this applies to your vehicle.

SERVICE PROCEDURE

IMPORTANT: Before starting, make sure:

- ASIST on the CONSULT PC has been synchronized (updated) to the current date.
- All CONSULT-III plus (C-III plus) software updates (if any) have been installed.
- The CONSULT PC is connected to the Internet (Wi-Fi or cable).

NOTE:

- For 2013 Versa Sedan only: This procedure may require reprogramming of the **ECM and TCM** which means most steps in this procedure may need to be done twice.
- Most instructions for reprogramming with CONSULT-III plus (C-III plus) are displayed on the CONSULT PC screen.
- If you are not familiar with the reprogramming procedure, [click here](#). This will link you to the "CONSULT- III plus (C-III plus) Reprogramming" general procedure.
- Take the vehicle for a 10 minute drive in order to meet the following Idle Air Volume Learn (IAVL) conditions:
 - Engine coolant temperature: 70 -100°C (158 -212°F)
 - Battery voltage: More than 12.9V (At idle)
 - Transmission: Warmed up



Figure A

- After reprogramming is complete, you will be required to perform Throttle Valve Closed Position, Idle Air Volume Learn (IAVL), Accelerator Closed Position, and DTC erase. The above conditions are required for IAVL to complete.

CAUTION:

- Connect the GR8 to the 12V battery and select ECM Power Supply Mode. If the vehicle battery voltage drops below 12.0V or rises above 15.5V during reprogramming, the ECM/TCM may be damaged.
- Be sure to turn OFF all vehicle electrical loads. If a vehicle electrical load remains ON, the ECM/TCM may be damaged.
- Be sure to connect the AC Adapter. If the CONSULT PC battery voltage drops during reprogramming, the process will be interrupted and the ECM/TCM may be damaged.
- Turn OFF all external Bluetooth® devices (e.g., cell phones, printers, etc.) within range of the CONSULT PC and the VI. If Bluetooth® signal waves are within range of the CONSULT PC during reprogramming, reprogramming may be interrupted and the ECM/TCM may be damaged.

1. Connect the CONSULT PC to the vehicle to begin the reprogramming procedure.
2. Open / Start C-III plus.
3. Wait for the plus VI to be recognized.
 - Serial number will display when the plus VI is recognized.
4. Select **Re/programming, Configuration**.

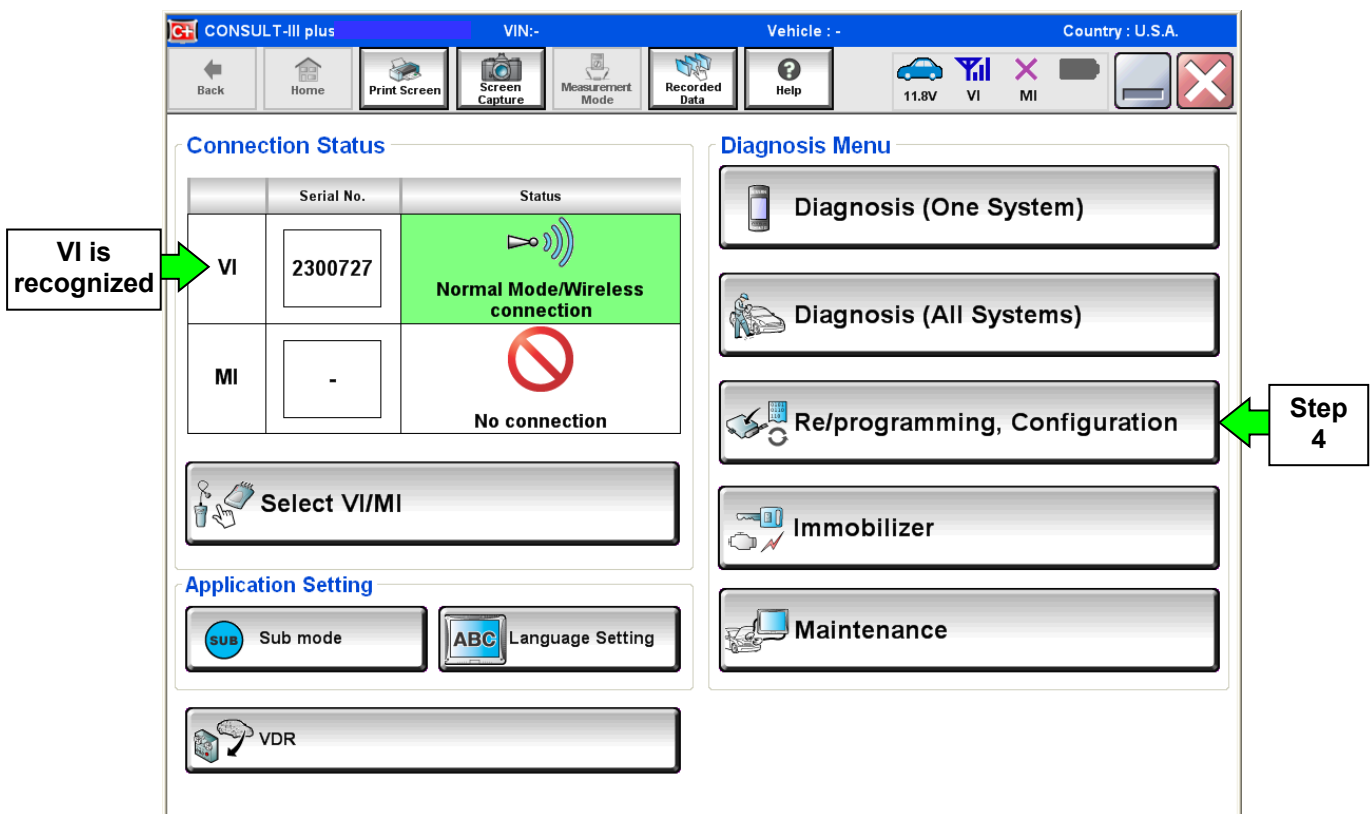


Figure 1

5. Follow the on-screen instructions and navigate the C-III plus to the screen shown in Figure 2 on the next page.

6. When you get to the screen shown in Figure 2, confirm this bulletin applies as follows:
- A. Find the ECM **Part Number** and write it on the repair order.

NOTE: This is the current ECM Part Number (P/N).

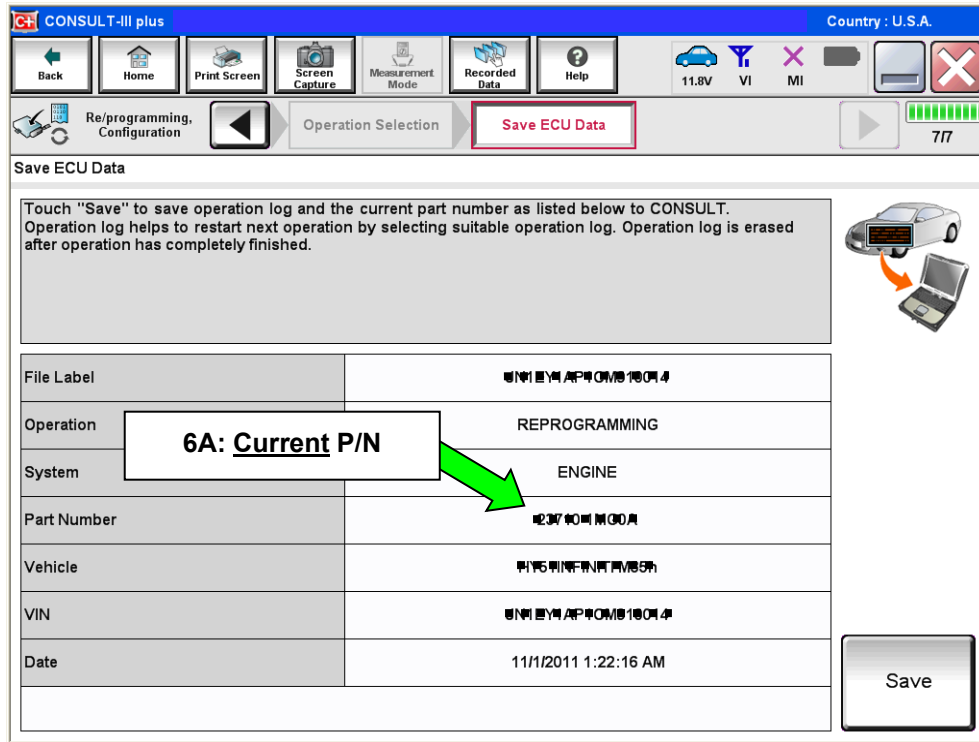


Figure 2

- B. Compare the P/N you wrote down to the numbers in the **Current ECM Part Number** column in **Table A**, beginning on the next page.
- If there is an ECM P/N match, this bulletin applies. Continue with the ECM reprogramming procedure.
 - If there is not an ECM P/N match, this bulletin does not apply.

Table A

MODEL	MODEL YEAR	Current <u>ECM</u> P/N: 23710-
Versa Sedan	2012	3AB2A, 3AB2D, 3AB2E 3AB3A, 3AB3D, 3AB3E 3AB4A, 3AB4D, 3AB4E, 3AB9A, 3AB9B, 3AB9C, 3AB9D 3AF0A, 3AF0B, 3AF0C 3AF1A, 3AF1B, 3AF1C, 3AF1D 3AF2A, 3AF2B, 3AF2C, 3AF2D
	2013	9KA0B, 9KA0C, 9KA0D, 9KA0E 9KA1B, 9KA1C, 9KA1D, 9KA1E 9KA2B, 9KA2C, 9KA2D, 9KA2E 9KA3B, 9KA3C, 9KA3D, 9KA3E 9KA5A, 9KA5B 9KA6A, 9KA6B 9KA7A, 9KA7B See page 7 for 2013 Versa Sedan.
	2014	9KF0A, 9KF0B, 9KF0C, 9KF0D, 9KF0E 9KF1A, 9KF1B, 9KF1C, 9KF1D, 9KF1E 9KF2A, 9KF2B, 9KF2C, 9KF2D, 9KF2E 9KF3A, 9KF3B, 9KF3C, 9KF3D, 9KF3E
	2015	9KE0A, 9KE0B, 9KE0C, 9KE0D 9KE1A, 9KE1B, 9KE1C, 9KE1D, 9KE1E 9KE2A, 9KE2B, 9KE2D, 9KE2E, 9KE2F
	2016	9KN0A, 9KN0B, 9KN0C 9KN1A, 9KN1B, 9KN1C 9KN2A, 9KN2B, 9KN2C
	2017	9KS1A, 9KS1B, 9KS1C 9KS2A, 9KS2B, 9KS2C 9KS3A, 9KS3B, 9KS3C

See page 7 for 2013 Versa Sedan.

Table A is continued on the next page.

Table A continued

Versa Note	2014	3VB1B, 3VB1C, 3VB1D, 3VB1E 3VB2B, 3VB2C, 3VB2D, 3VB2E 3VB3B, 3VB3C, 3VB3D, 3VB3E 3VB4B, 3VB4C, 3VB4D, 3VB4E 3VB5B, 3VB5C, 3VB5D, 3VB5E 3VB6E, 3VB6F 3VB7E, 3VB7F 3VB8E, 3VB8F
	2015	9MB0A, 9MB0B, 9MB0C 9MB1A, 9MB1B, 9MB1C 9MB2A, 9MB2C, 9MB2D, 9MB2E 9MB3A, 9MB3C, 9MB3D, 9MB3E 9MB4A, 9MB4C, 9MB4D, 9MB4E 9MB5A, 9MB5C, 9MB5D, 9MB5E
	2016	9MD0A, 9MD0B, 9MD0C 9MD1A, 9MD1B, 9MD1C 9MD2A, 9MD2B, 9MD2C 9MD3A, 9MD3B, 9MD3C 9MD4A, 9MD4B, 9MD4C 9MD5A, 9MD5B, 9MD5C
	2017	9ME1A, 9ME1B 9ME2A, 9ME2B 9ME3A, 9ME3B 9ME4A, 9ME4B 9ME5A, 9ME5B 9ME6A, 9ME6B

See the next page for 2013 Versa Sedan.

For 2013 Versa Sedan with CVT only:

If ECM reprogramming applies, you may need to perform **TCM reprogramming**.

1. If ECM reprogramming is needed, complete it first.
2. When ECM reprogramming is complete, restart the reprogramming process for the TCM.
3. When you get to step 6 on page 4, confirm TCM reprogramming is needed as follows:
NOTE: The screen in Figure 2 on page 4 will be similar for TCM reprogramming.
 - A. Find the **TCM Part Number** and write it on the repair order.
 - B. Compare the P/N you wrote down to the number in the **Current TCM Part Number** column in **Table B**, below.
 - If there is a TCM P/N match, continue with TCM reprogramming procedure.
 - If there is not a TCM P/N match, this procedure is complete.

Table B

MODEL	MODEL YEAR	CURRENT <u>TCM</u> P/N: 31036-
Versa Sedan	2013	9KB1B, 9KB1C

7. Follow the on-screen instructions to navigate C-III plus and reprogram the ECM.

NOTE:

- In some cases, more than one new P/N for reprogramming is available.
 - If there is more than one new P/N, the screen in Figure 3 displays.
 - Select and use the reprogramming option that **does not** have the message “Caution! Use ONLY with NTBXX-XXX”.
- If you get this screen and it is blank (no reprogramming listed), it means there is no reprogramming available for this vehicle.

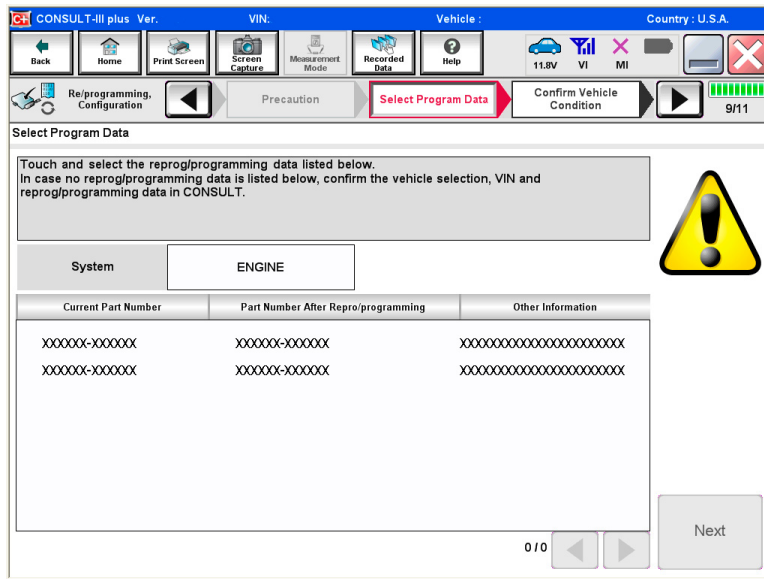


Figure 3

- Before reprogramming will start, you will be required to enter your User Name and Password.
 - The CONSULT PC must be connected to the Internet (Wi-Fi or cable).
 - If you do not know your User Name and Password, contact your Service Manager.

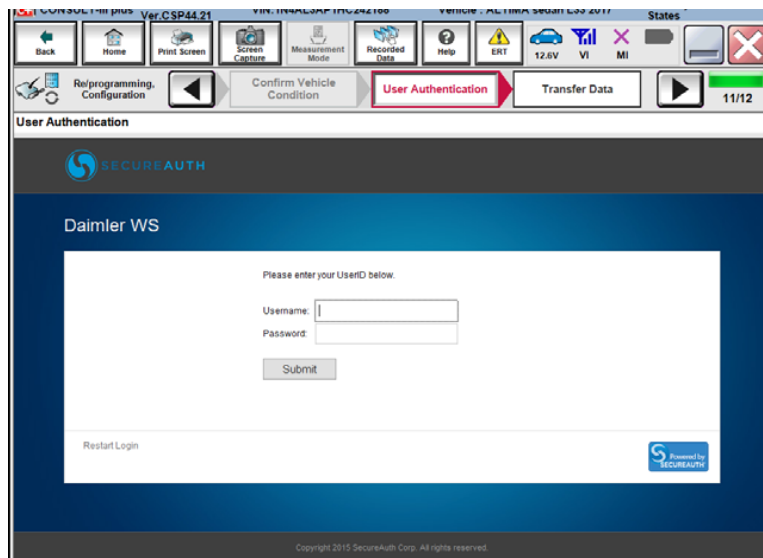


Figure 4

8. When the screen in Figure 5 displays, reprogramming is complete.

NOTE: If the screen in Figure 5 does not display (reprogramming does not complete), refer to the information on the next page.

9. Disconnect the battery charger from the vehicle.

10. Select **Next**.

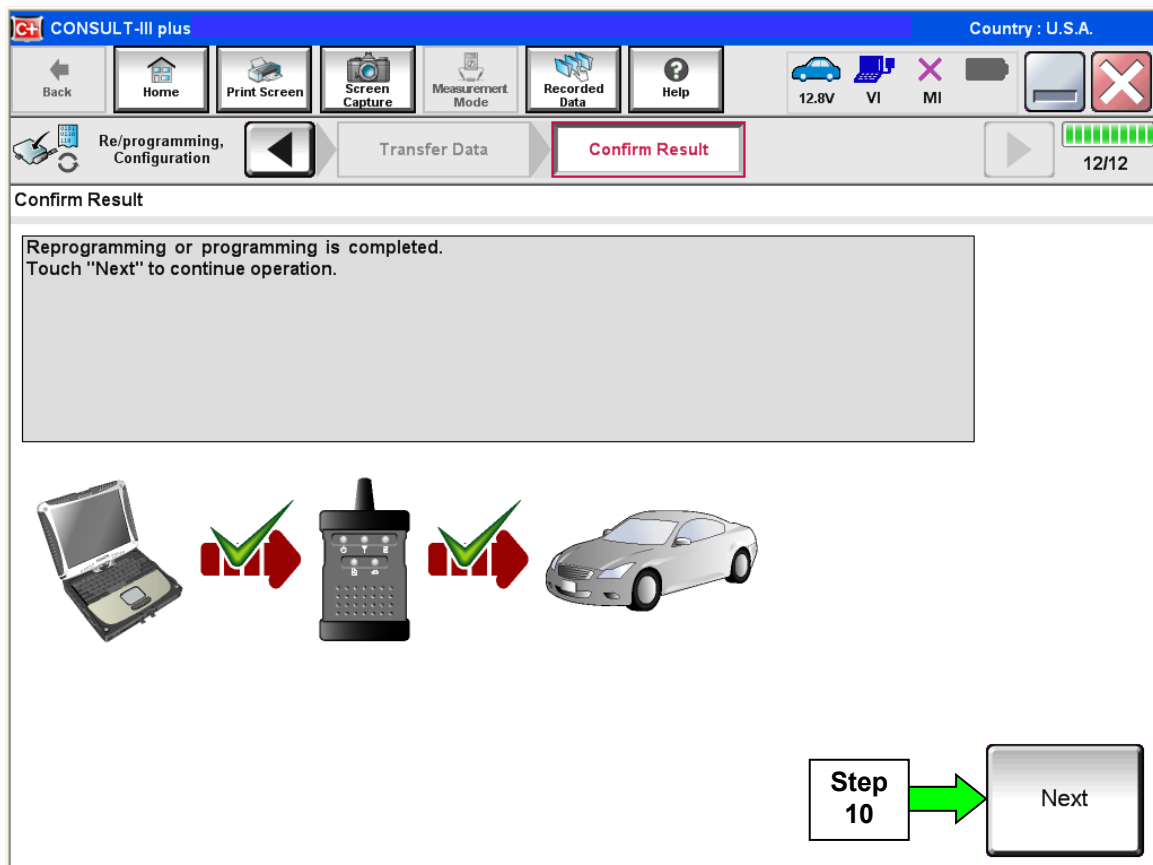


Figure 5

NOTE:

- In the next steps (page 11), you will perform Throttle Valve Closed Position, Idle Air Volume Learn, Accelerator Closed Position, and DTC erase.
- These operations are required before C-III plus will provide the final reprogramming confirmation report.

ECM Recovery

Do not disconnect plus VI or shut down C-III plus if reprogramming does not complete.

If reprogramming does not complete and the “!?” icon displays as shown in Figure 6:

- Check battery voltage (12.0–15.5 V).
- Ignition is ON, engine OFF.
- External Bluetooth® devices are OFF.
- All electrical loads are OFF.
- **Select retry and follow the on screen instructions.**
- “Retry” may not go through on first attempt and can be selected more than once.

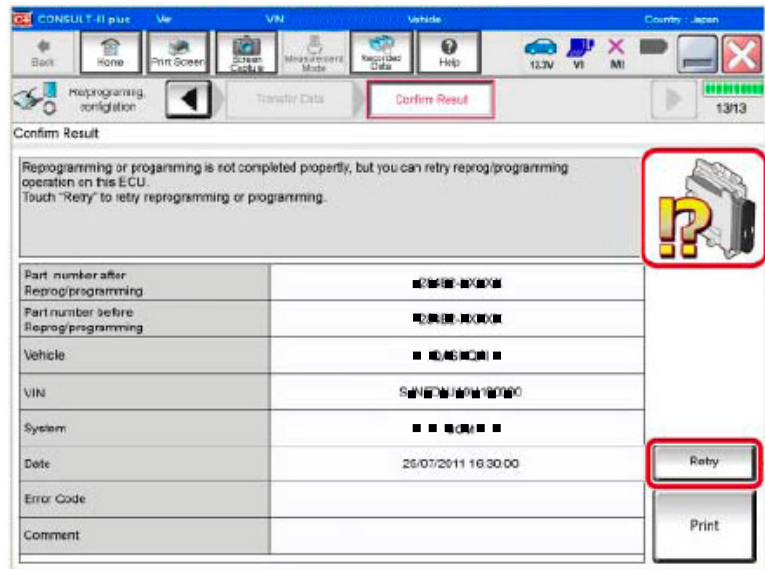


Figure 6

If reprogramming does not complete and the “X” icon displays as shown in Figure 7:

- Check battery voltage (12.0 – 15.5 V).
- CONSULT A/C adapter is plugged in.
- Ignition is ON, engine OFF.
- Transmission is in Park.
- All C-III plus / VI cables are securely connected.
- All C-III plus updates are installed.
- **Select Home, and restart the reprogram procedure from the beginning.**

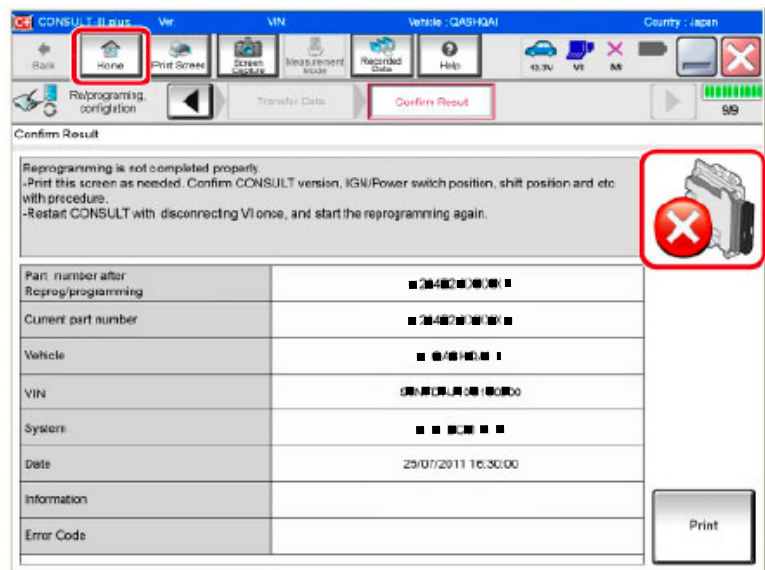


Figure 7

11. Follow the on-screen instructions to perform the following:

- **Throttle Valve Closed Position**
- **Idle Air Volume Learn (IAVL)**

NOTE:

- **Listed below are common conditions required for IAVL to complete.**
- **If IAVL does not complete within a few minutes, a condition may be out of range.**
- **Refer to the appropriate Electronic Service Manual (ESM) for specific conditions required for the vehicle you are working on.**
 - Engine coolant temperature: 70 -100° C (158 -212°F)
 - Battery voltage: More than 12.9V (At idle)
 - Selector lever: P or N
 - Electric load switch: OFF (Air conditioner, headlamp, rear window defogger)
 - Steering wheel: Neutral (Straight-ahead position)
 - Vehicle speed: Stopped
 - Transmission: Warmed up
- **Accelerator Pedal Close Position Learning**
- **Erase DTCs**

Go to the next page.

12. When the entire reprogramming process is complete, the screen in Figure 8 will display.

13. Verify the before and after part numbers are different.

14. Print a copy of this screen (Figure 8) and attach it to the repair order for warranty documentation.

15. Select **Confirm**.

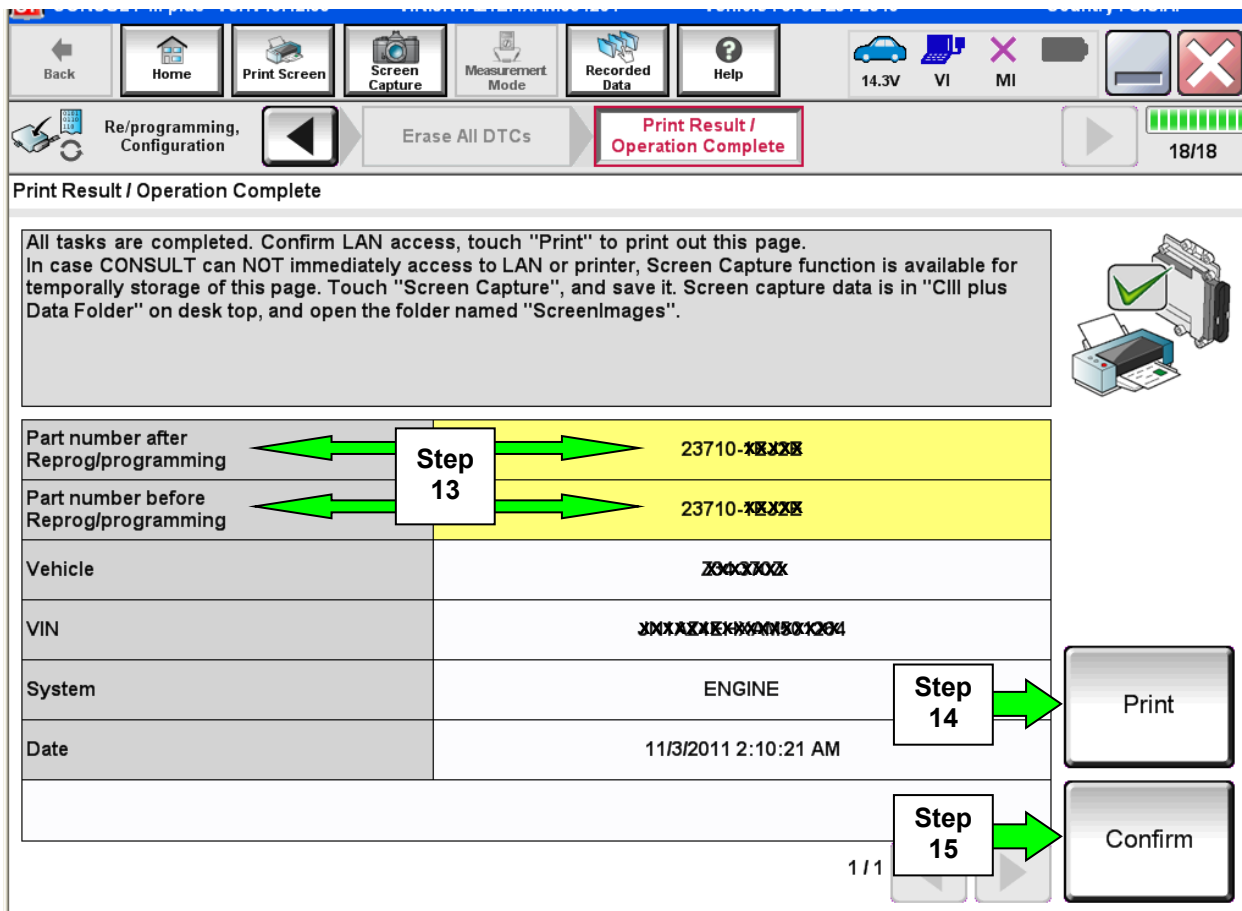


Figure 8

16. Close C-III plus.

17. Turn the ignition OFF.

18. Disconnect the plus VI from the vehicle.

19. Make sure the vehicle operates correctly and the MIL is OFF.

- If the MIL comes ON, go back to ASIST for further diagnostic information.
- Diagnosis and repairs beyond ECM reprogramming (and TCM reprogramming, if it applies) are not covered by this bulletin.

CLAIMS INFORMATION

Submit a Primary Part (PP) type line claim using the following claims coding:

DESCRIPTION	PFP	OP CODE	SYM	DIA	FRT
Reprogram ECM	(1)	DE97AA	HD	32	(2)

- (1) Refer to the electronic parts catalog (FAST or equivalent) and use the ECM part number as the Primary Failed Part (PFP).
- (2) Reference the current Nissan Warranty Flat Rate Manual and use the indicated FRT.

AND if TCM Reprogramming Applies (2013 Versa Sedan only)

Submit a Primary Part (PP) type line claim using the following claims coding:

DESCRIPTION	PFP	OP CODE	FRT
Reprogram TCM	(1)	JE99AA	(2)

- (1) Refer to the electronic parts catalog (FAST or equivalent) and use the ECM part number as the Primary Failed Part (PFP).
- (2) Reference the current Nissan Warranty Flat Rate Manual and use the indicated FRT.

