



# Preliminary Information

## PIP5472E Short Duration Misfire - Rough Idle - MIL On During Cold Start - P050D

Models

Brand:	Model:	Model Years:	VIN:		Engine:	Transmissions:
			from	to		
Buick	Encore	2016 - 2018	All	All	1.4L (RPO LE2)	All
Chevrolet	Cruze	2016 - 2018	All	All	1.4L (RPO LE2)	All
Chevrolet	Equinox	2018	All	All	1.5L (RPO LYX)	All
Chevrolet	Malibu	2016 - 2018	All	All	1.5L (RPO Lfv)	All
Chevrolet	Spark	2016 - 2018	All	All	1.4L (RPO LV7)	All
Chevrolet	Volt	2016 - 2018	All	All	1.5L (RPO L3A)	All
GMC	Terrain	2018	All	All	1.5L (RPO LYX)	All

<b>Involved Region or Country</b>	<b>North America</b>
<b>Condition</b>	<b>Short duration cold start rough idle, MIL on, P050D with or without P0300 at ambient temperatures between -10C and +5C (14F to 41F).</b>
<b>Cause</b>	<b>If the SI diagnostic fails to isolate a fuel system component concern, then one or more exhaust SHLA's (Stationary Hydraulic Lash Adjuster) may not bleed off the cold, thick engine oil, causing the exhaust valve not to seal the cylinder for a short duration during cold starts.</b>

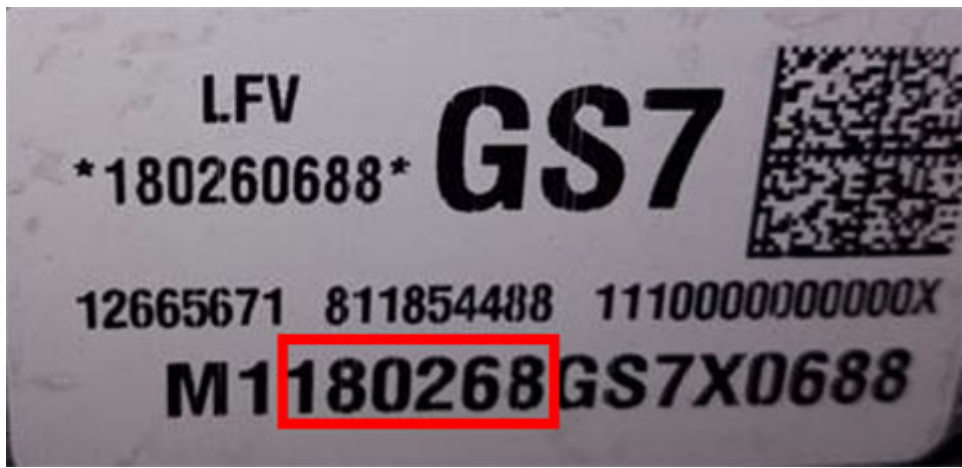
**Correction:**

If you encounter the P050D with misfires that occur only during the first 15 to 30 seconds of cold start, perform the P050D diagnostic in SI.

If the diagnostic fails to isolate a fuel system component concern, perform the following steps.

The engine Unit Number Label is located on the engine front cover.

**Example Engine Unit Number:**



The first digit = engine plant.

The second digit reflects the shift, in this case 1 = First Shift

The third and fourth digits reflect the model year, in this case 18 = 2018

The fourth, fifth and sixth digits reflect the day of that calendar year 026 = 26<sup>th</sup> day of 2018 calendar year (build date)

If the engine you are working on was built on or after 17135, the SHLA's (Stationary Hydraulic Lash Adjuster) should not be replaced for this concern.

17135: 17 = 2017 calendar year, 135 = 135th calendar day. May 15th.

If the engine you are working on was built before 17135, then replace all Exhaust SHLA's. (Stationary Hydraulic Lash Adjuster)

Do not replace the intake side SHLA's as a slow leak rate on the intake side will not cause this issue.

Repair Verification requires a cold start.

After SHLA replacement, following a cold soak at ambient temperatures between -10C and +5C (14F to 41F) start the engine and retest for short duration misfires or the P050D.

### Warranty Information

Labor Operation	Description	Labor Time
4061270	Hydraulic Valve Lash Adjuster Replacement	Use Published Labor Operation Time

### Version History

Version	Description
6	Created on 02/03/2017.
5	2/23/2017 - to add 2016-2017 Chevrolet Volt to models list.
4	3/09/2017 - to add 2018 to all models.
3	12/11/2017 - to add 2018 GMC TERRAIN.
2	12/26/17 - to advise tech to perform P050D diagnostic prior to following this PI.
1	08/22/2018 - To add build date information.



GENERAL MOTORS

