



Preliminary Information

PIP5493G Misfire with DTC's P0300, P0301-P0306

Models

Brand:	Model:	Model Years:	VIN:		Engine:	Transmissions:
			from	to		
Buick	LaCrosse	2017 - 2019	All	All	3.6 LGX	All
Cadillac	ATS	2016 - 2019	All	All	3.6 LGX	All
Cadillac	CT6	2016 - 2019	All	All	3.0 LGW, 3.6 LGX	All
Cadillac	CTS	2016 - 2019	All	All	3.6 LGX	All
Cadillac	XT5	2017 - 2019	All	All	3.6 LGX	All
Chevrolet	Camaro	2016 - 2019	All	All	3.6 LGX	All
Chevrolet	Colorado	2017 - 2019	All	All	3.6 LGZ	All
GMC	Acadia	2017 - 2019	All	All	3.6 LGX	All
GMC	Canyon	2017 - 2019	All	All	3.6 LGZ	All

Supersession Statement

This PI was superseded to update model years. Please discard PIP5493F.

Involved Region or Country	North America
Condition	Some customers may comment on a MIL light illuminated. During diagnosis a technician may find DTC P0300 (Engine Misfire Detected) and/or a specific cylinder DTC such as P0300, P0301-P0306 This code may be active or stored in history.
Cause	Multiple causes depending on vehicle configuration.

Correction:

On 2106 and 2017 vehicles, verify the vehicle has the latest ECM calibration.

NOTE: Do not reflash 2018 vehicles for this condition.

If a new calibration is available relating to this concern, reprogram the ECM and reevaluate the condition.
If code(s) do not return and no condition is present then return vehicle to customer.
If vehicle has the latest ECM calibration refer below for next steps.

- 1) Perform normal eSI diagnostics testing all spark and fuel components for issues. (Coil grounds and wiring, injector concerns, spark plugs, etc)
If no concerns are found following ESI then follow this PI for repair.
- 2) Inspect for broken or dislodged SRFFs (rockers arms) per the pictures below.
While inspecting the rockers it will be necessary to rotate the engine over by hand to ensure that the rockers are

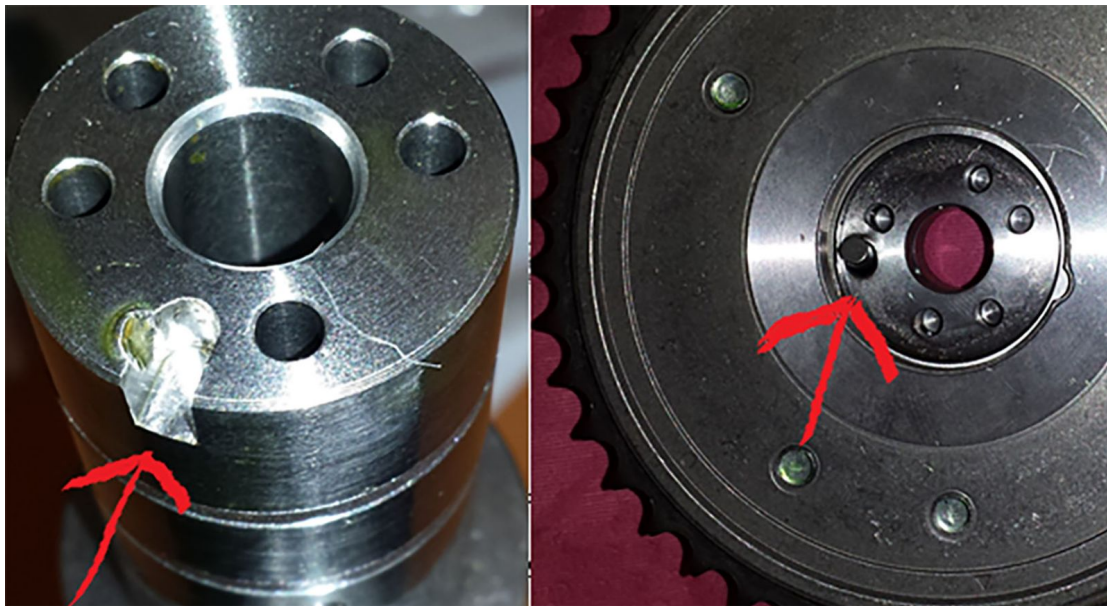
opening the valves.

NOTE: Camshaft carrier assembly removal may be necessary to fully inspect the rockers and SRFF's.

If any one of the SRFF's are damaged it will be necessary to replace all four on the affected cylinder.



3) Remove the camshaft actuators on the bank that is misfiring and inspect the end of the camshafts and the pin in the actuators for being bent example shown below.



4) If any broken parts are found during inspection replace all damaged parts. It will also be necessary to replace the AFM OCV in the camshaft cover for both banks.

5) If vehicle was built before November 1, 2017 replace the effected exhaust shla's/ lifters on the cylinder that was misfiring with current part # in EPC.

NOTE: This PI will be updated or changed to a bulletin when parts breakpoint dates become available.

Warranty Information

For vehicles repaired under warranty, use the current labor time for the actual repair made.

Version History

Version	8
Modified	<p>Created on 04/24/2017</p> <p>6/7/2017 Update to add Model Year in Correction.</p> <p>6/29/2017 Update to add further direction with picture and correct engine description.</p> <p>8/02/2017 Update to add new directions and administrative details.</p> <p>10/30/2017 update to add model year and directions and pictures.</p> <p>1/17/2018 Update to change direction on Shla replacement and end administrative details.</p>



© 2018 General Motors. All Rights Reserved.