



Bulletin No.: PIC5902B  
Published date: 08/3/2018

## Preliminary Information

### PIC5902B Questions On Attaching The Rear License Plate To The Vehicle

#### Models

Brand:	Model:	Model Years:	VIN:		Engine:	Transmissions:
			from	to		
Chevrolet	Camaro	2014 - 2018	All	All	All	All

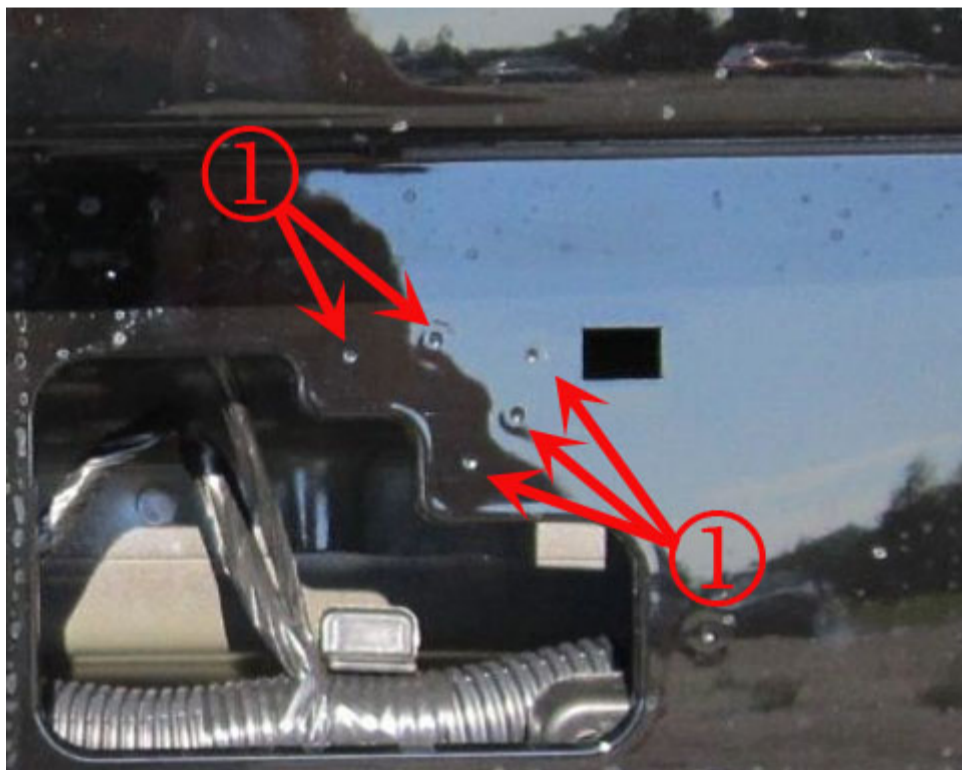
#### Supersession Statement

This PI was superseded to update Model Years. Please discard all copies of PIC5902A.

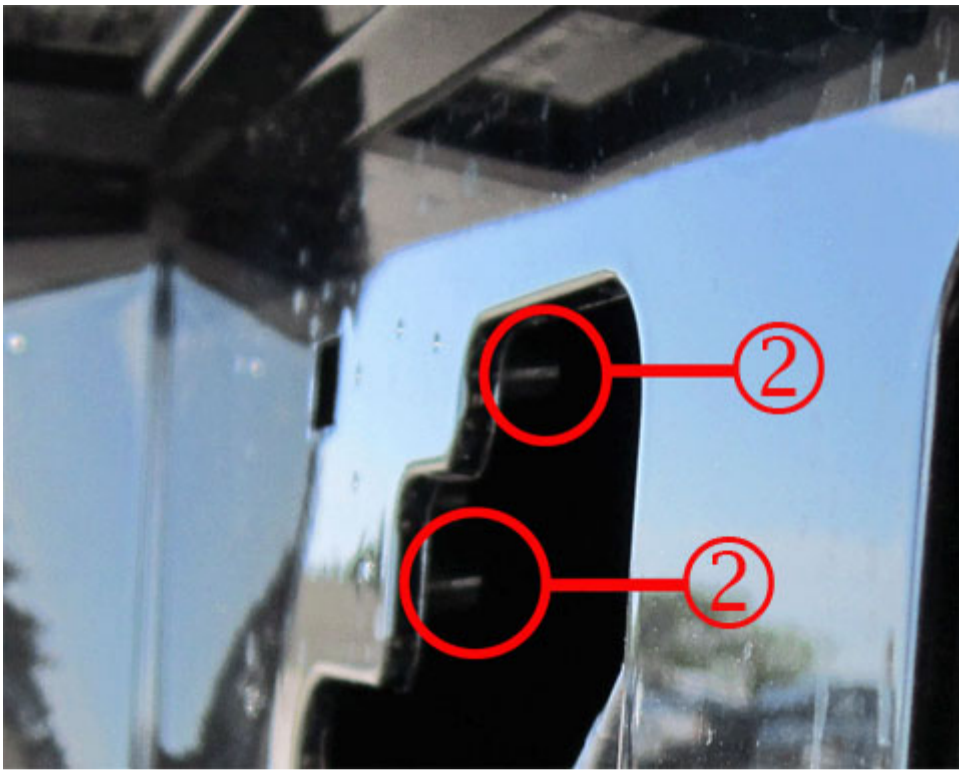
#### Condition / Concern

**During a Pre-Delivery Inspection, some technicians may find that the rear license plate mounting holes will not line up with the large rectangular holes in the rear fascia of the vehicle. This alignment gives the impression that the plate will not be able to be attached to the rear fascia. Dealers may question how to proceed with the installation of the rear license plate on these vehicles.**

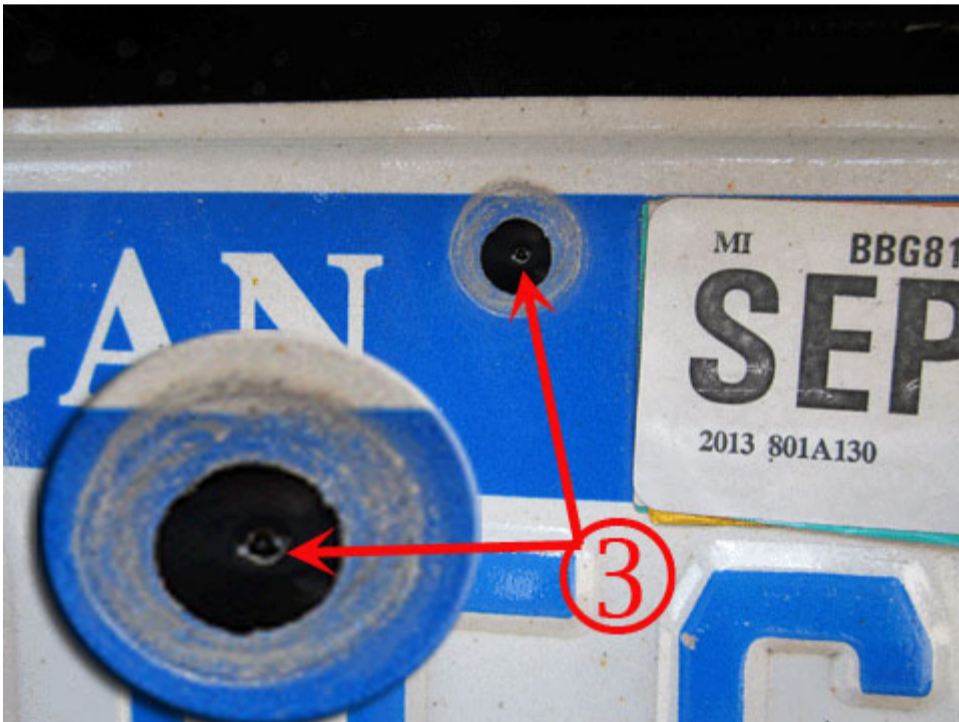
**Upon closer inspection, the tech may notice that the rear fascia has small dimples at various locations around the license plate area. Some of these dimples are indicated by item #1 in the photo below.**



**These dimples are not casting flaws in the rear fascia. They provide accurate reference for the mounting locations for various sized license plates, depending on which market the car is being driven in. Behind each of these dimples, there is a plastic boss. The plastic mounting boss behind the rear fascia can be referenced as item #2 in the following photo. Each dimple has a plastic boss behind it regardless of where it is located.**



Dealership technicians are to center the license plate on the rear fascia. When it is in the correct location, technicians will confirm that a dimple is visible in each one of the license plate mounting holes. See item #3 in the picture below for an example of a correctly positioned license plate.



When the correct location is confirmed, take the self-tapping screws that are included in the PDI bag, and install them into the rear fascia. There is no need to pre-drill these holes. The self-tapping screws will correctly attach the license plate to the rear fascia.



GENERAL MOTORS

© 2018 General Motors. All Rights Reserved.