

August 16, 2018

Version 3

Capless Fuel Shutter Set (Mis-Fuel Inhibit Device) Is Frozen

Supersedes 18-012, dated April 21, 2018, to revise the sections highlighted in **yellow**.

AFFECTED VEHICLES

Year	Model	Trim	VIN Range
2016-17	Civic	4-door	ALL
2016-18	Civic	2-door	ALL
2017-18	Civic	5-door	ALL

REVISION SUMMARY

- Under **AFFECTED VEHICLES**, Civic 5-door was added.
- Under **WARRANTY CLAIM INFORMATION**, new Template IDs for Civic 5-door was added.
- Under **PARTS INFORMATION**, Civic 5-door part number was added.
- Under **REPAIR PROCEDURE**, Civic 5-door pictures and steps were added.

SYMPTOM

The customer is unable to insert the fuel nozzle into the filler neck and fuel the vehicle in cold weather.

PROBABLE CAUSE

Water or moisture has entered the fueling area and frozen the capless fuel shutter set in the fuel filler neck.

CORRECTIVE ACTION

Replace the capless shutter set. Install the fuel filler lid and apply the fuel filler caution label (if applicable).

CUSTOMER INFORMATION: The information in this bulletin is intended for use only by skilled technicians who have the proper tools, equipment, and training to correctly and safely maintain your vehicle. These procedures should not be attempted by "do-it-yourselfers," and you should not assume this bulletin applies to your vehicle, or that your vehicle has the condition described. To determine whether this information applies, contact an authorized Honda automobile dealer.

WARRANTY CLAIM INFORMATION

The normal warranty applies.

Operation Number	Description	Flat Rate Time	Defect Code	Symptom Code	Template ID	Failed Part Number
3101U2	Replace the capless fuel shutter set. Install the fuel lid cover (2-door non-Si models only).	0.7 hr	03214	03217	A18012C	17060-TBA-L01
3101U2	Replace the capless fuel shutter set. Install the fuel lid cover (4-door non-Si models only).	0.7 hr	03214	03217	A18012D	17060-TBA-L01
3101U2	Replace the capless fuel shutter set. Install the fuel lid cover and the fuel lid label (2-door Si models only).	0.7 hr	03214	03217	A18012E	17060-TBA-L01
3101U2	Replace the capless fuel shutter set. Install the fuel lid cover and the fuel lid label (4-door Si models only).	0.7 hr	03214	03217	A18012F	17060-TBA-L01
3101U2	Replace the capless fuel shutter set. Install the fuel lid cover (5-door LX, EX, and EX-L models only).	0.7 hr	03214	03217	A18012G	17060-TBA-L01
3101U2	Replace the capless fuel shutter set. Install the fuel lid cover and the fuel lid label (5-door Sport, Sport Touring, and Type R models only).	0.7 hr	03214	03217	A18012H	17060-TBA-L01

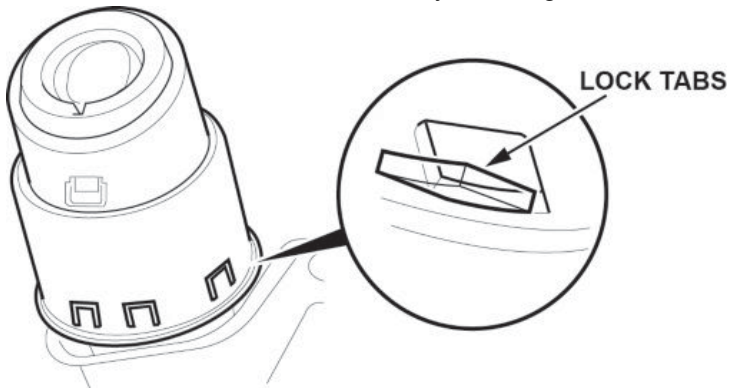
Skill Level: Repair Technician

PARTS INFORMATION

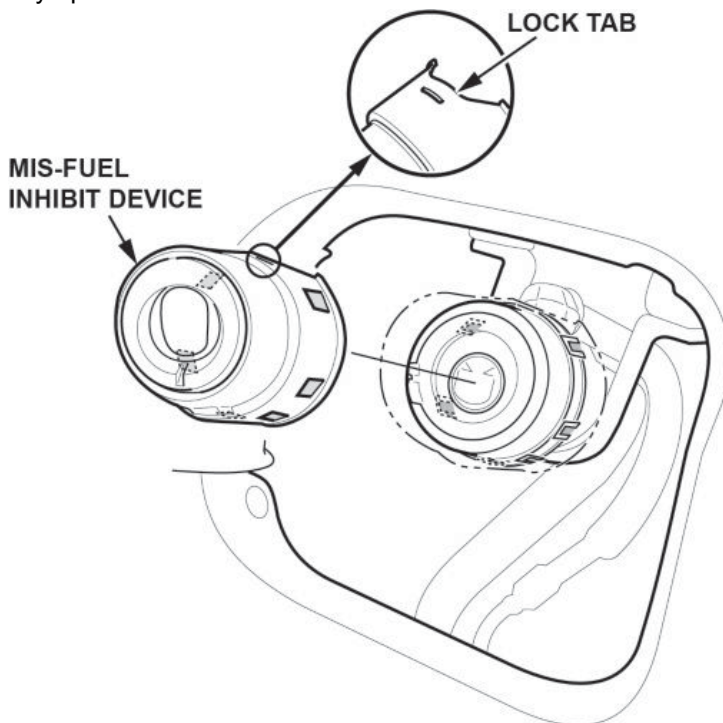
Part Name	Part Number	Quantity
Fuel Filler Caution Label (Si, Sport, Sport Touring, and Type R models only)	17669-RL5-A00	1
Fuel Filler Lid Cover (5-door)	17666-TGG-A01	1
Fuel Filler Lid Cover (2-door)	17666-TBG-A01	1
Fuel Filler Lid Cover (4-door)	17666-TBA-A01	1
Capless Shutter Set (Mis-Fuel Inhibit Device)	17671-TBA-A02	1

REPAIR PROCEDURE

1. Remove the left rear inner fender as needed.
2. Remove the fuel fill door lock actuator.
3. Remove the fuel fill door adapter.
4. Remove the mis-fuel inhibit device by breaking the 6 lock tabs.



5. Pry up the lock tab and remove the mis-fuel inhibit device.

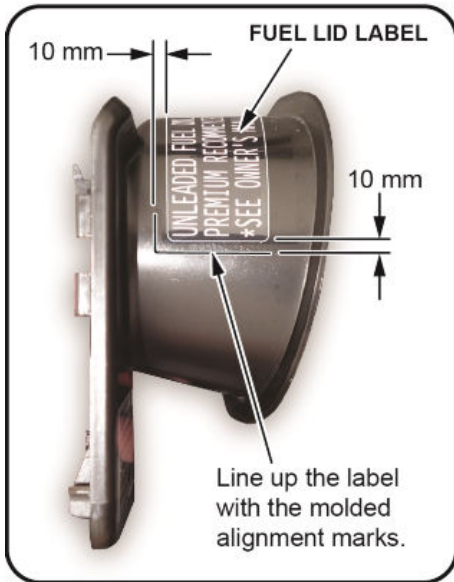


6. Install the new mis-fuel inhibit device.
7. Re-install all removed parts.

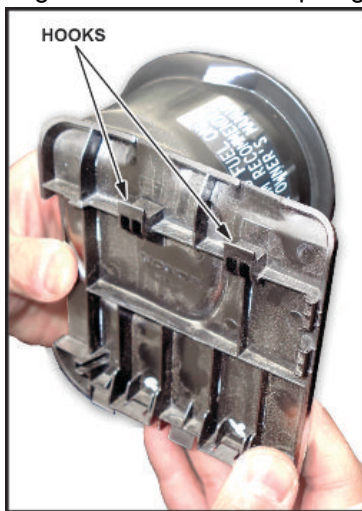
1. **On Si models only:** Apply the fuel lid label to the new fuel lid cover as shown.

NOTE

Make sure the new fuel lid cover is clean and grease-free, especially on the surface where the label will be applied.



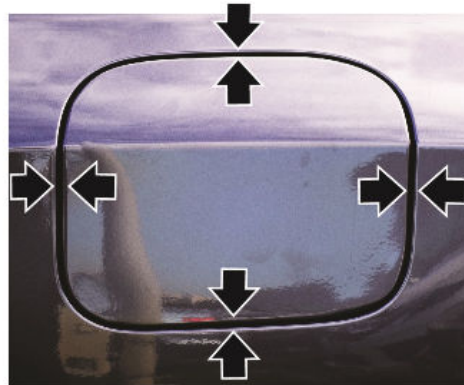
2. Align the hooks on the top edge of the fuel lid cover to slots on the fuel door as shown.



3. Press the bottom of the fuel lid cover against the fuel door until both locking tabs click. This indicates the fuel lid cover is securely and correctly installed.



4. Make sure the fuel door closes and latches without contact or interference from the mis-fuel inhibit device and surrounding area. The gap between the door and the surrounding quarter panel should remain consistent.



5. Make sure the fuel door release works correctly when using the driver's door switch.

Civic 2-door

1. **On Si models only:** Apply the fuel lid label to the new fuel lid cover as shown.

NOTE

Make sure the new fuel lid cover is clean and grease-free, especially on the surface where the label will be applied.



2. Align the hook on the right side edge of the fuel lid cover to the fuel door as shown.

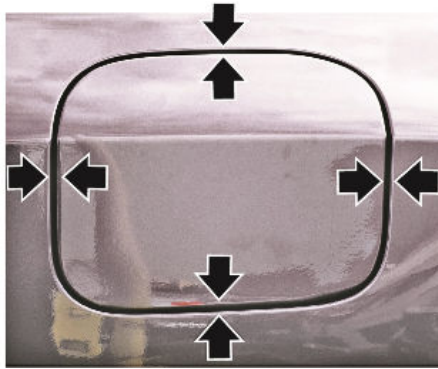
HOOK



3. Press the left of the fuel lid cover against the fuel door until both locking tabs click. This indicates the fuel lid cover is securely and correctly installed.



4. Make sure the fuel door closes and latches without contact or interference from the mis-fuel inhibit device and surrounding area. The gap between the door and the surrounding quarter panel should remain consistent.



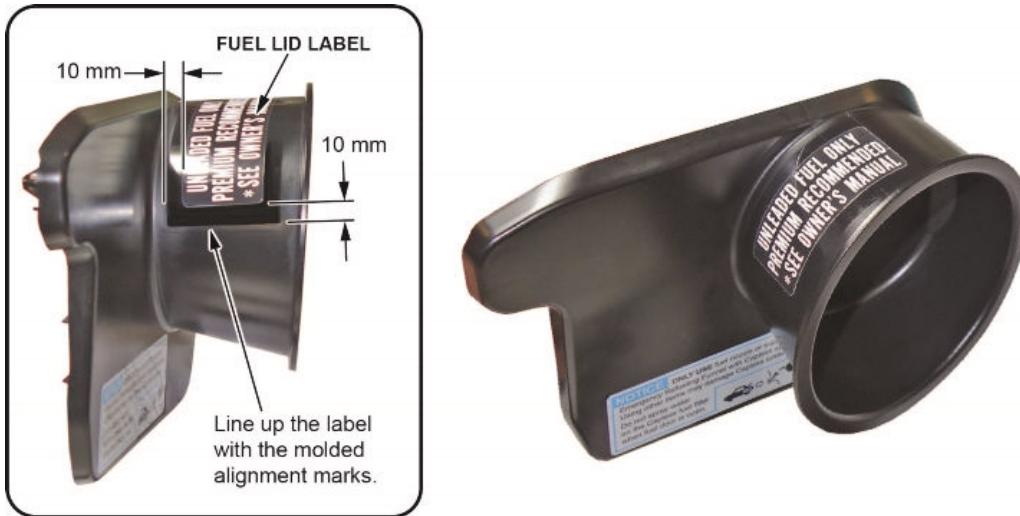
5. Make sure the fuel door release works correctly when using the driver's door switch.

Civic 5-door

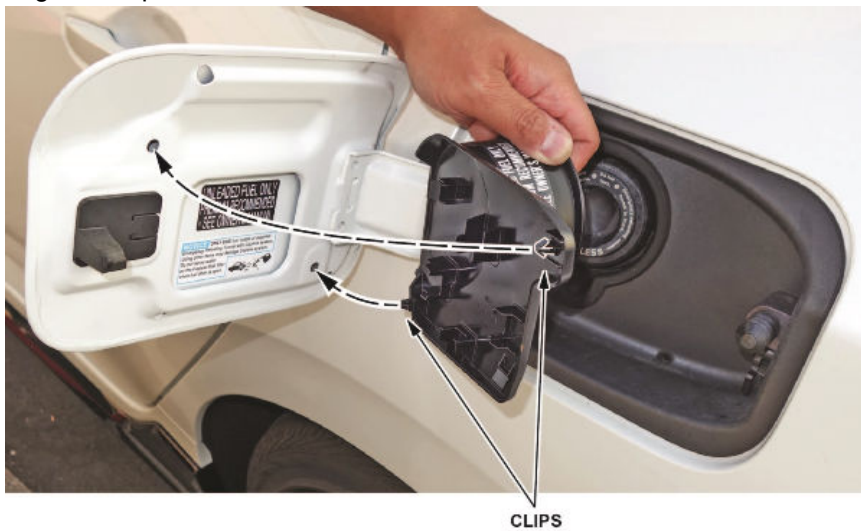
1. **On Sport, Sport Touring, or Type R models only:** Apply the fuel lid label to the new fuel lid cover as shown.

NOTE

Make sure the new fuel lid cover is clean and grease-free, especially on the surface where the label will be applied.



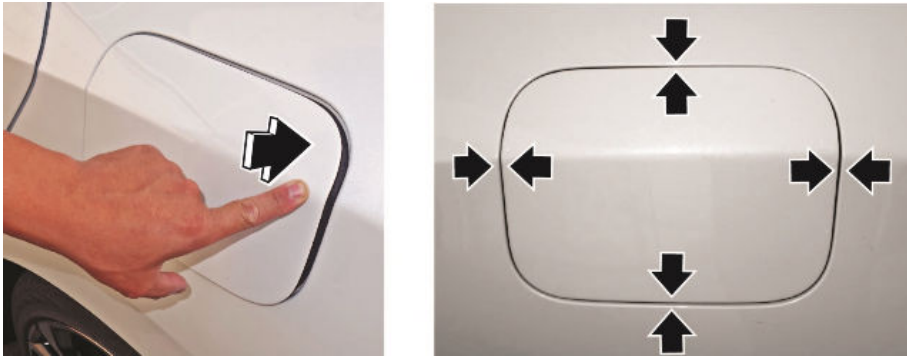
2. Align the clips on the back of the fuel lid cover to the holes in the fuel door.



3. Press the left of the fuel lid cover against the fuel door until both clips click. This indicates the fuel lid cover is securely and correctly installed.



4. Make sure the fuel door closes and latches without contact or interference from the mis-fuel inhibit device and surrounding area. The gap between the door and the surrounding quarter panel should remain consistent.



5. Make sure the fuel door release works correctly when using the driver's door switch.

END