

MODEL: Karma Revero**Date: August 2018****TITLE: EPB Harness Overlay Inspection and Adjustment**

PRIORITY: On complaint verify overlay install on provided list**APPLICABILITY:** MY18 Revero**MARKET REGION:** North America**PURPOSE:** Inspection of the EPB overlay harness for best installation. If the vehicle shows the DTC code (B1EEE) from EPB system, this bulletin will direct you to adjust harness install, and if needed replacement of select components on direction of TSS.

If the electronic park brake shows a DTC different than the above, diagnose and correct as normal (KarmaSync, and the STI document guidance)

Before working on the harness perform a 12V disconnect.

Have the necessary tools required to perform work on a electrical harness:

- wire snips
- highest quality electrical tape (fig.1a)
- cable ties (fig.1b)

The Overlay Harness Assembly (C161190100500, fig.1d) is installed on the affected vehicles. This previous repair was performed in CC-17-60-27 as a part of the BL1030 updates. order from Karma Automotive.



fig. 1a



fig. 1b



fig. 1c

Karma Automotive Bulletins and service documents are intended for use by experienced and trained Technicians. If you lack the skills, tools, equipment and a suitable workshop for any procedure described in this document, we suggest you leave such repairs to a Karma retailer and service provider. See your service provider for advice on whether your vehicle may benefit from the information contained within this document. The information contained in the Karma Bulletin is accurate at the date of publication. However, Karma Automotive regularly updates technical information. Please check with your Karma Automotive Retailer and Karma Automotive service provider that the bulletin you intend to use contains the latest available information.

The following vehicles be subject to this bulletin.

TB-18-60-01

50GK41SA7JA000004	50GK41SA5JA000051	50GK41SA7JA000097	50GK41SA7JA000147
50GK41SA9JA000005	50GK41SA7JA000052	50GK41SA9JA000098	50GK41SA9JA000148
50GK41SA0JA000006	50GK41SA0JA000054	50GK41SA0JA000099	50GK41SA0JA000149
50GK41SA2JA000007	50GK41SA2JA000055	50GK41SA3JA000100	50GK41SA7JA000150
50GK41SA6JA000009	50GK41SA4JA000056	50GK41SA5JA000101	50GK41SA9JA000151
50GK41SA2JA000010	50GK41SA6JA000057	50GK41SA0JA000104	50GK41SA0JA000152
50GK41SA4JA000011	50GK41SA8JA000058	50GK41SA6JA000107	50GK41SA2JA000153
50GK41SA6JA000012	50GK41SAXJA000059	50GK41SAXJA000109	50GK41SA4JA000154
50GK41SA8JA000013	50GK41SA6JA000060	50GK41SA1JA000113	50GK41SA6JA000155
50GK41SAXJA000014	50GK41SA8JA000061	50GK41SA3JA000114	50GK41SA8JA000156
50GK41SA1JA000015	50GK41SAXJA000062	50GK41SA5JA000115	50GK41SAXJA000157
50GK41SA3JA000016	50GK41SA1JA000063	50GK41SA7JA000116	50GK41SA1JA000158
50GK41SA5JA000017	50GK41SA3JA000064	50GK41SA9JA000117	50GK41SA3JA000159
50GK41SA9JA000019	50GK41SA5JA000065	50GK41SA0JA000118	50GK41SAXJA000160
50GK41SA5JA000020	50GK41SA7JA000066	50GK41SA2JA000119	50GK41SA1JA000161
50GK41SA7JA000021	50GK41SA9JA000067	50GK41SA9JA000120	50GK41SA3JA000162
50GK41SA0JA000023	50GK41SA0JA000068	50GK41SA0JA000121	50GK41SA5JA000163
50GK41SA6JA000026	50GK41SA2JA000069	50GK41SA2JA000122	50GK41SA7JA000164
50GK41SA8JA000027	50GK41SA2JA000069	50GK41SA4JA000123	50GK41SA9JA000165
50GK41SAXJA000028	50GK41SA9JA000070	50GK41SA6JA000124	50GK41SA0JA000166
50GK41SA1JA000029	50GK41SA2JA000072	50GK41SA8JA000125	50GK41SA2JA000167
50GK41SA8JA000030	50GK41SA6JA000074	50GK41SAXJA000126	50GK41SA4JA000168
50GK41SAXJA000031	50GK41SA8JA000075	50GK41SA1JA000127	50GK41SA6JA000169
50GK41SA1JA000032	50GK41SAXJA000076	50GK41SA3JA000128	50GK41SA2JA000170
50GK41SA3JA000033	50GK41SA1JA000077	50GK41SA5JA000129	50GK41SA4JA000171
50GK41SA5JA000034	50GK41SA3JA000078	50GK41SA1JA000130	50GK41SA6JA000172
50GK41SA7JA000035	50GK41SA5JA000079	50GK41SA3JA000131	50GK41SA8JA000173
50GK41SA9JA000036	50GK41SA1JA000080	50GK41SA5JA000132	50GK41SAXJA000174
50GK41SA0JA000037	50GK41SA3JA000081	50GK41SA7JA000133	50GK41SA1JA000175
50GK41SA2JA000038	50GK41SA5JA000082	50GK41SA9JA000134	50GK41SA3JA000176
50GK41SA4JA000039	50GK41SA7JA000083	50GK41SA0JA000135	50GK41SA5JA000177
50GK41SA0JA000040	50GK41SA9JA000084	50GK41SA2JA000136	50GK41SA7JA000178
50GK41SA2JA000041	50GK41SA2JA000086	50GK41SA4JA000137	50GK41SA9JA000179
50GK41SA4JA000042	50GK41SA4JA000087	50GK41SA6JA000138	50GK41SA5JA000180
50GK41SA6JA000043	50GK41SA8JA000089	50GK41SA8JA000139	50GK41SA7JA000181
50GK41SA8JA000044	50GK41SA4JA000090	50GK41SA4JA000140	50GK41SA9JA000182
50GK41SAXJA000045	50GK41SA6JA000091	50GK41SA6JA000141	50GK41SA0JA000183
50GK41SA1JA000046	50GK41SA8JA000092	50GK41SA8JA000142	50GK41SA2JA000184
50GK41SA3JA000047	50GK41SAXJA000093	50GK41SAXJA000143	50GK41SA4JA000185
50GK41SA5JA000048	50GK41SA1JA000094	50GK41SA1JA000144	50GK41SA6JA000186
50GK41SA7JA000049	50GK41SA3JA000095	50GK41SA3JA000145	50GK41SA8JA000187
50GK41SA3JA000050	50GK41SA5JA000096	50GK41SA5JA000146	

MODEL: Karma Revero**Date: August 2018****TITLE: EPB Harness Overlay Inspection and Adjustment**

1. The EPB actuator overlay routing highlighted in Orange color (fig.2a) this will be adjusted.

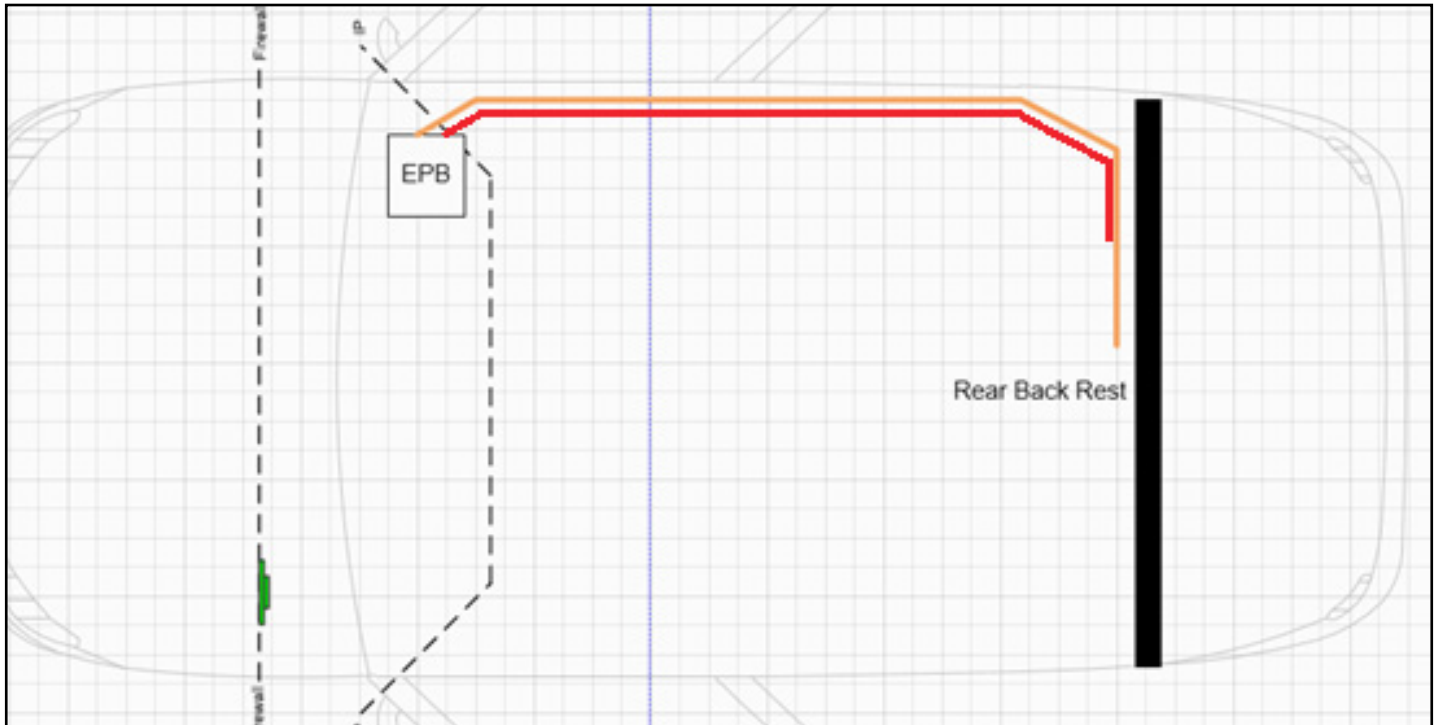


fig. 2a

Before performing any electrical or related work, perform a 12V disconnect (fig. 2b).

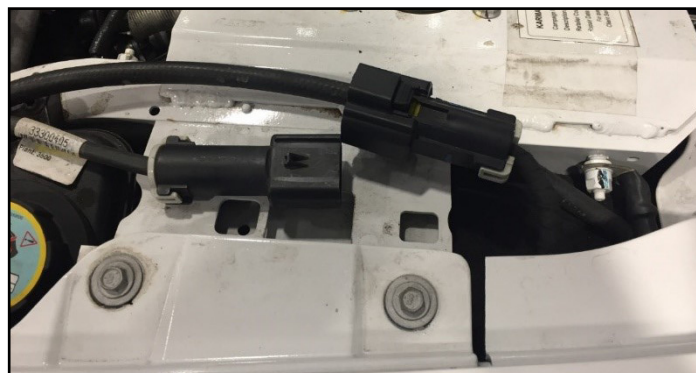


fig. 2b

Karma Automotive Bulletins and service documents are intended for use by experienced and trained Technicians. If you lack the skills, tools, equipment and a suitable workshop for any procedure described in this document, we suggest you leave such repairs to a Karma retailer and service provider. See your service provider for advice on whether your vehicle may benefit from the information contained within this document. The information contained in the Karma Bulletin is accurate at the date of publication. However, Karma Automotive regularly updates technical information. Please check with your Karma Automotive Retailer and Karma Automotive service provider that the bulletin you intend to use contains the latest available information.

MODEL: Karma Revero**Date: August 2018****TITLE: EPB Harness Overlay Inspection and Adjustment**

2. Remove the rear seats and interior trim to access the harness overlay as installed. Reference the service manual if required (fig. 2a-2b).



fig. 2a

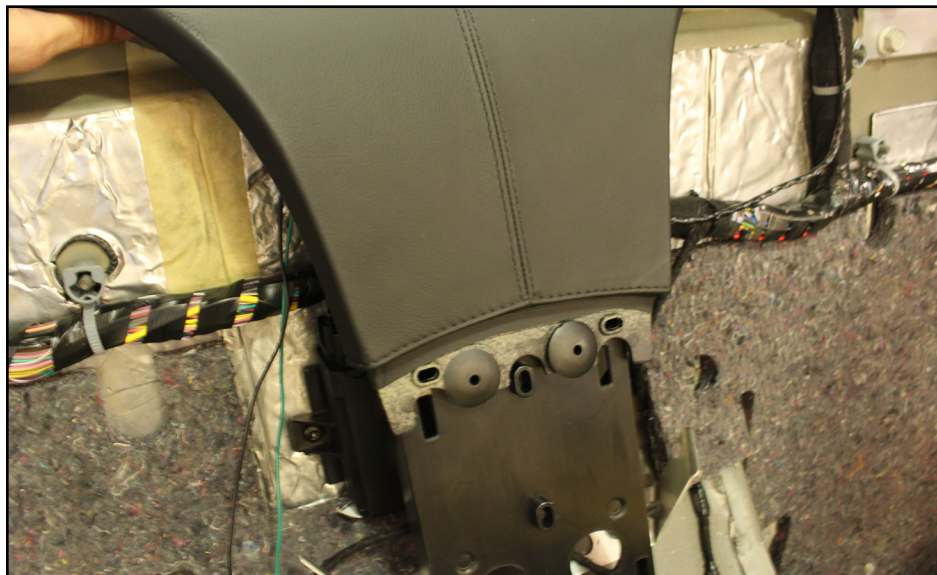


fig. 2b

Karma Automotive Bulletins and service documents are intended for use by experienced and trained Technicians. If you lack the skills, tools, equipment and a suitable workshop for any procedure described in this document, we suggest you leave such repairs to a Karma retailer and service provider. See your service provider for advice on whether your vehicle may benefit from the information contained within this document. The information contained in the Karma Bulletin is accurate at the date of publication. However, Karma Automotive regularly updates technical information. Please check with your Karma Automotive Retailer and Karma Automotive service provider that the bulletin you intend to use contains the latest available information.

MODEL: Karma Revero

Date: August 2018

TITLE: EPB Harness Overlay Inspection and Adjustment

3. Remove the RH sill plates and locate the overlay along the interior harness (fig 3a,3b). Remove the B-pillar trim and follow the harness to the EPB module. Remove connector D0310-1 and D0310-2.



fig. 3a



fig. 3b

4. Under the dash obtain access to the EPB module and disconnect the two connectors (fig 3c,3d) This will help in realigning the harness for the best install.



fig. 3c

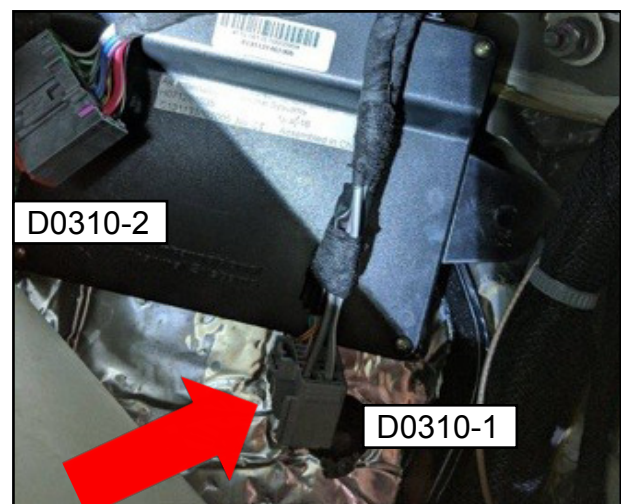


fig. 3d

Karma Automotive Bulletins and service documents are intended for use by experienced and trained Technicians. If you lack the skills, tools, equipment and a suitable workshop for any procedure described in this document, we suggest you leave such repairs to a Karma retailer and service provider. See your service provider for advice on whether your vehicle may benefit from the information contained within this document. The information contained in the Karma Bulletin is accurate at the date of publication. However, Karma Automotive regularly updates technical information. Please check with your Karma Automotive Retailer and Karma Automotive service provider that the bulletin you intend to use contains the latest available information.

MODEL: Karma Revero

Date: August 2018

TITLE: EPB Harness Overlay Inspection and Adjustment

5. Use tape to join the overlay and D0310-1 wire bundle as shown. Do not leave any slack and run the overlay directly alongside bundle (fig.4a). Position the overlay to route between the bundle and body of the vehicle. In the next image an incorrect install is shown (fig. 4b) extra length will be adjusted to end up towards the rear of the vehicle.

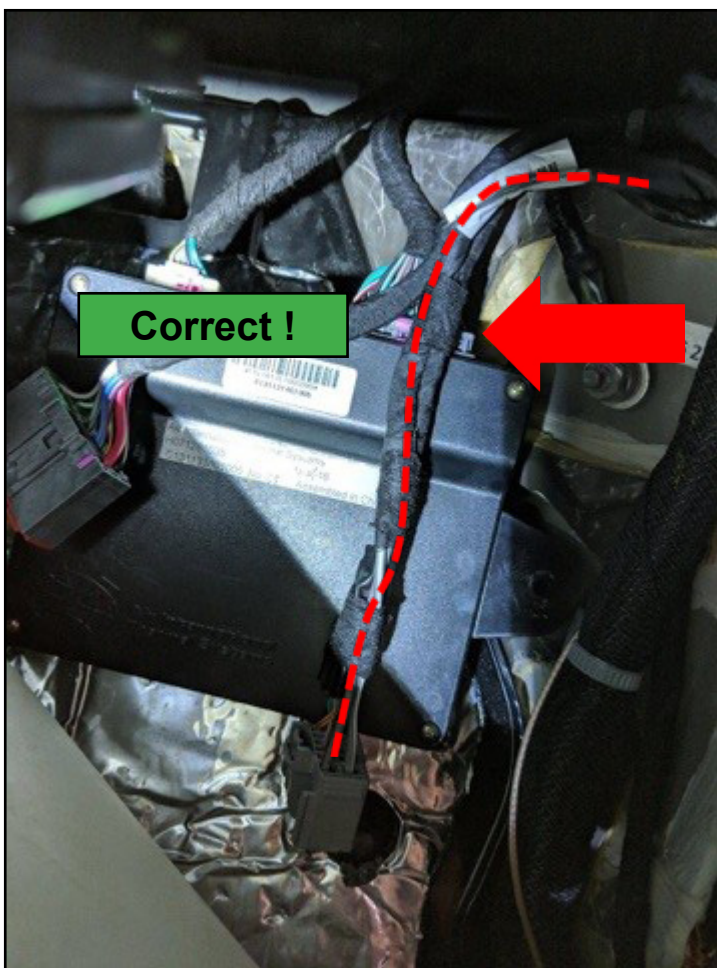


fig. 4a



fig. 4b

Karma Automotive Bulletins and service documents are intended for use by experienced and trained Technicians. If you lack the skills, tools, equipment and a suitable workshop for any procedure described in this document, we suggest you leave such repairs to a Karma retailer and service provider. See your service provider for advice on whether your vehicle may benefit from the information contained within this document. The information contained in the Karma Bulletin is accurate at the date of publication. However, Karma Automotive regularly updates technical information. Please check with your Karma Automotive Retailer and Karma Automotive service provider that the bulletin you intend to use contains the latest available information.

MODEL: Karma Revero**Date: August 2018****TITLE: EPB Harness Overlay Inspection and Adjustment**

6. Reroute the overlay such that the overlay is tightly placed between the body harness and vehicle wall (fig 5a)

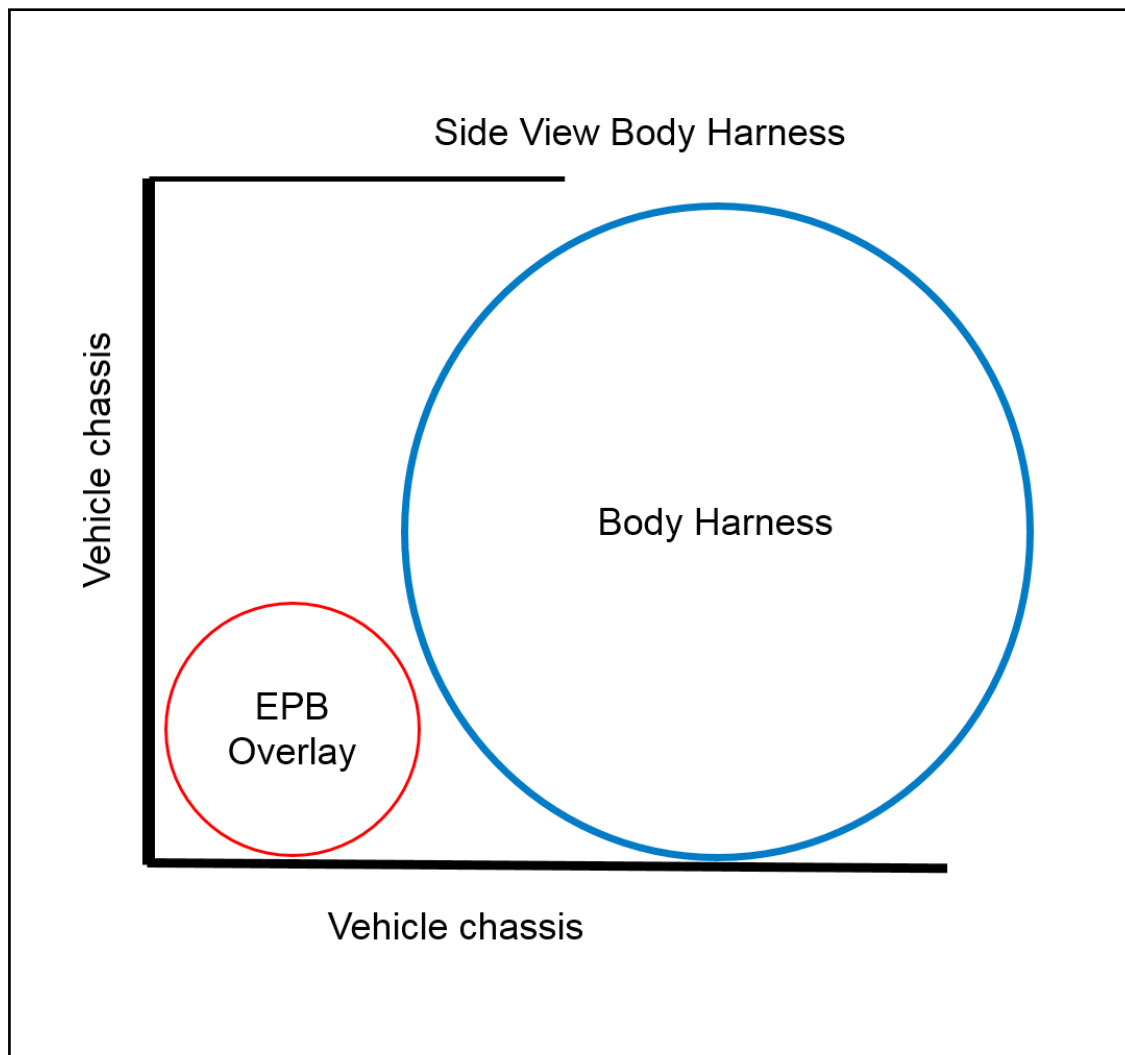


fig. 5a

Karma Automotive Bulletins and service documents are intended for use by experienced and trained Technicians. If you lack the skills, tools, equipment and a suitable workshop for any procedure described in this document, we suggest you leave such repairs to a Karma retailer and service provider. See your service provider for advice on whether your vehicle may benefit from the information contained within this document. The information contained in the Karma Bulletin is accurate at the date of publication. However, Karma Automotive regularly updates technical information. Please check with your Karma Automotive Retailer and Karma Automotive service provider that the bulletin you intend to use contains the latest available information.

MODEL: Karma Revero**Date: August 2018****TITLE: EPB Harness Overlay Inspection and Adjustment**

Make sure that the wires are tightly secured below the harness to the back of the vehicle (fig. 6a)
Secure the overlay every 10 inches with zip ties around the body harness and overlay. Again the overlay tucked between chassis and Body Harness. Do not allow any slack of EPB Overlay routing.

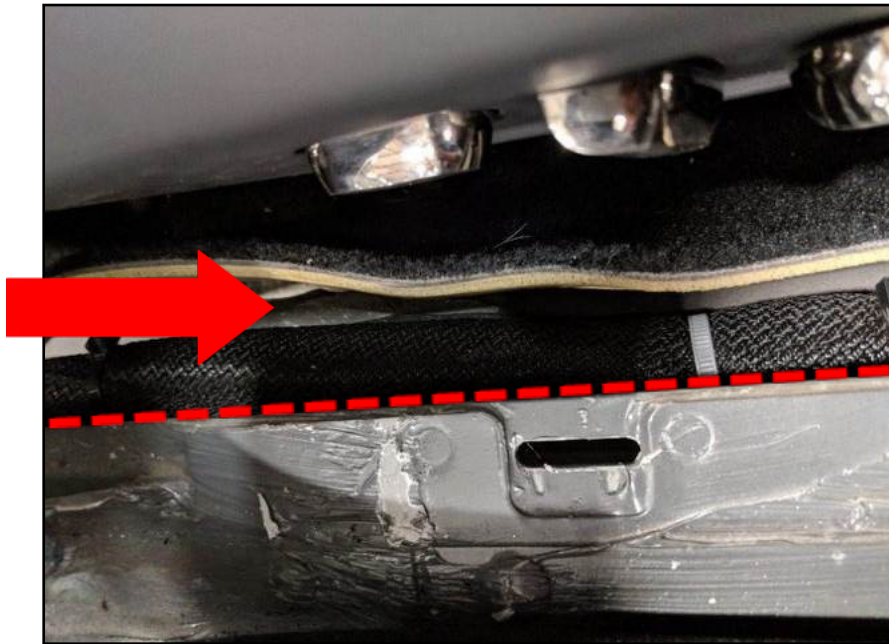


fig. 6a

Make sure to closely route the overlay to the bundle so that there is no slack, over the length of the Body Harness. Repeat this until the overlay reaches the middle of the rear passenger area (fig. 5b).



fig. 5b

Karma Automotive Bulletins and service documents are intended for use by experienced and trained Technicians. If you lack the skills, tools, equipment and a suitable workshop for any procedure described in this document, we suggest you leave such repairs to a Karma retailer and service provider. See your service provider for advice on whether your vehicle may benefit from the information contained within this document. The information contained in the Karma Bulletin is accurate at the date of publication. However, Karma Automotive regularly updates technical information. Please check with your Karma Automotive Retailer and Karma Automotive service provider that the bulletin you intend to use contains the latest available information.

MODEL: Karma Revero**Date: August 2018****TITLE: EPB Harness Overlay Inspection and Adjustment**

8. Continue to route the EPB overlay between the body harness and vehicle walls. Continue to do this up the rear passenger wall. The proper routing up the Body Harness can be seen on the back bulk head in (fig. 6a).

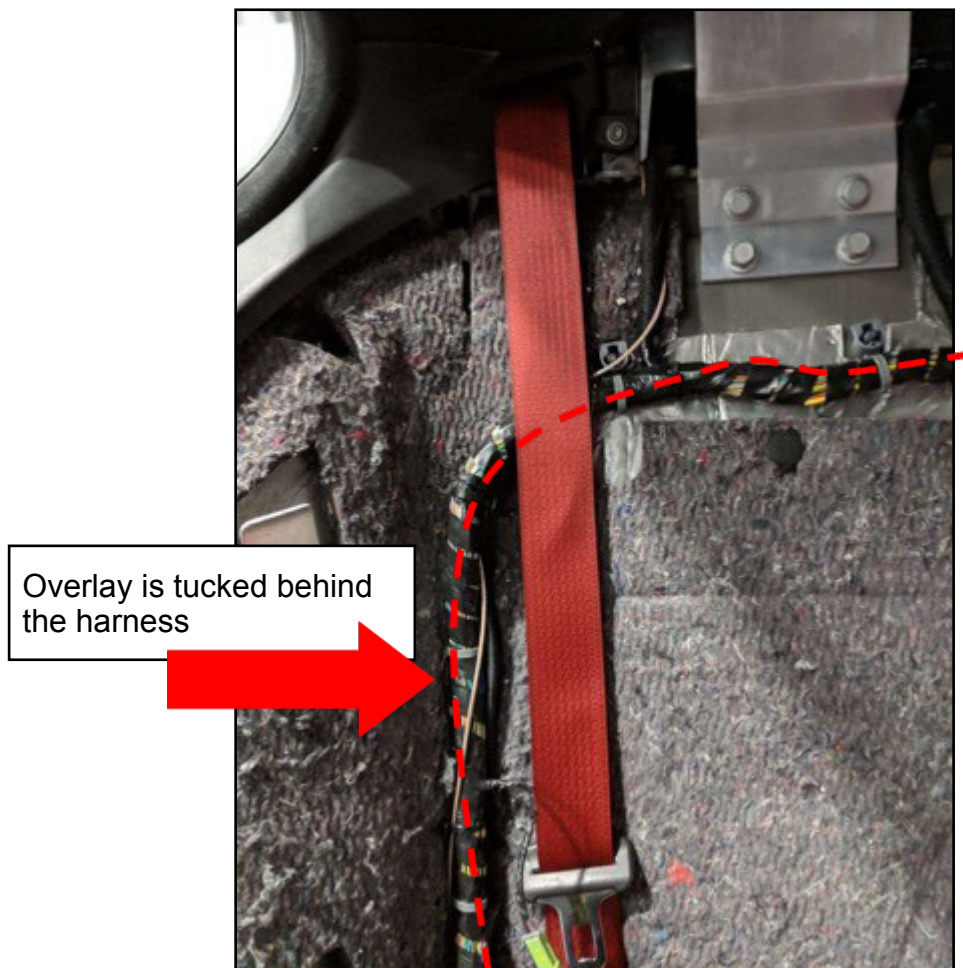


fig. 6a

MODEL: Karma Revero**Date: August 2018****TITLE: EPB Harness Overlay Inspection and Adjustment**

9. The overlay harness will run as shown, and zip-tie along the existing interior harness (fig.7a) and route along the the trunk harness (fig.7a) every 12-inches is recommended.



fig. 7a

Note how Overlay is bundled and secured with zip tie.
Any excess wire is bundled and “zip-tied” in this location

Test the electronic park brake (EPB), calibrate as required cycle this several times.

Reassemble the interior trim in the reverse of removal. Check for any diagnostic trouble codes and function of rear seat cushion heaters as per bulletin SC-17-86-20.

Carefully replace the rear seat, door sills, B-pillar trim, and front passenger kick panel to original position.

Reconnect the 12V battery back in. Perform the EPB calibration and make sure it works properly. Clear all codes and test drive the vehicle as per normal service procedure.

Karma Automotive Bulletins and service documents are intended for use by experienced and trained Technicians. If you lack the skills, tools, equipment and a suitable workshop for any procedure described in this document, we suggest you leave such repairs to a Karma retailer and service provider. See your service provider for advice on whether your vehicle may benefit from the information contained within this document. The information contained in the Karma Bulletin is accurate at the date of publication. However, Karma Automotive regularly updates technical information. Please check with your Karma Automotive Retailer and Karma Automotive service provider that the bulletin you intend to use contains the latest available information.



MODEL: Karma Revero

Date: August 2018

TITLE: EPB Harness Overlay Inspection and Adjustment

PARTS REQUIRED:

PART NUMBER	DESCRIPTION
N/A	N/A

DESCRIPTION
N/A

SPECIAL TOOLS:

PART NUMBER	DESCRIPTION
N/A	

CAUSAL PART:

PART NUMBER	DESCRIPTION
C161190100500	EPB - Overlay Cable Assembly

LABOR CODES:

CODE	DESCRIPTION	TIME	DEFECT CODE
90-10-20-15	EPB Overlay Harness Adjust	1.0	90-10-20-17

WARRANTY DISPOSITION: This repair is covered under the New Vehicle Limited Warranty, in effect for five (5) years from the in-service date with no mileage limitation.

Karma Automotive Bulletins and service documents are intended for use by experienced and trained Technicians. If you lack the skills, tools, equipment and a suitable workshop for any procedure described in this document, we suggest you leave such repairs to a Karma retailer and service provider. See your service provider for advice on whether your vehicle may benefit from the information contained within this document. The information contained in the Karma Bulletin is accurate at the date of publication. However, Karma Automotive regularly updates technical information. Please check with your Karma Automotive Retailer and Karma Automotive service provider that the bulletin you intend to use contains the latest available information.