

August 6, 2018

Version 1

Wind Noise from the Driver's or Front Passenger's Window

Replaces 15-011, *Wind Noise from the Driver's or Front Passenger's Window*. Replaces 15-087, *Wind Noise from the Driver's or Front Passenger's Window*.

AFFECTED VEHICLES

Year	Model	Trim	VIN Range
2013-17	Accord	4 Door	ALL

SYMPTOM

There is a noticeable wind noise at ear level from either the driver's or the front passenger's window.

POSSIBLE CAUSE

The wind noise is caused by a gap between the run channel and the inner sash or the run channel and the sash trim.

CORRECTIVE ACTION

Test-drive the vehicle to determine the location(s) of the wind noise. If the noise is heard at ear level from either the driver's or front passenger's window or along the B-pillar, tape it off and see if the noise goes away. If the noise goes away, this bulletin applies. If the noise is still heard, this bulletin does not apply. Continue with normal system troubleshooting. Based on your results, apply EPT sealer to the run channel groove and/or replace the sash garnish.

REQUIRED MATERIALS

Part Name	Part Number	Quantity
EPT Sealer (One roll repairs about 165 vehicles.)	06990-SA5-000	1
Adhesion Promoter Kit (One packet repairs one vehicle.)	08F20-S9A-10003	1
3M Adhesion Promoter #06396 (Use if 08F20-S9A-10003 is not available. One box fixes 10 vehicles.)	Commercially available	1
Isopropyl Alcohol (degreaser)	Commercially available	1
Masking Tape	Commercially available	1

CUSTOMER INFORMATION: The information in this bulletin is intended for use only by skilled technicians who have the proper tools, equipment, and training to correctly and safely maintain your vehicle. These procedures should not be attempted by "do-it-yourselfers," and you should not assume this bulletin applies to your vehicle, or that your vehicle has the condition described. To determine whether this information applies, contact an authorized Honda automobile dealer.

PARTS INFORMATION

Part Name	Part Number	Quantity
Garnish, Right Front (L4)	72430-T2F-A01	1
Garnish, Right Front (V6)	72430-T2G-A01	1
Garnish, Left Front (L4)	72470-T2F-A01	1
Garnish, Left Front (V6)	72470-T2G-A01	1

TOOL INFORMATION

Part Name	Part Number	Quantity
Plastic Trim Tool (pack of 10)	SILTRIMTL10	1

This tool is available through the Honda Tool and Equipment Program at 888-424-6857.

WARRANTY CLAIM INFORMATION

The normal warranty applies.

Repair Procedure A only - (One Side)

Operation Number	Description	Flat Rate Time	Defect Code	Symptom Code	Template ID	Failed Part Number
8150B3	Clean and apply EPT sealer on left or right side window. (includes test-drive)	0.4 hr	07408	05604	A18045A	72235-T2F-A02

Repair Procedure A only - (Both Sides)

8150B3	Clean and apply EPT sealer on left or right side window. (includes test-drive)	0.4 hr	07408	05604	A18045B	72235-T2F-A02
A	Add for the opposite side	0.4 hr				

Repair Procedure A and B (L4)

8271B7	Replace right front trim (L4). Clean and apply EPT sealer. (includes test-drive)	0.9 hr	06201	07302	A18045C	72430-T2F-A01
8261C1	Replace left front trim (L4). Clean and apply EPT sealer. (includes test-drive)	0.9 hr			A18045D	

Repair Procedure A and B (V6)

8271C0	Replace right front trim (V6). Clean and apply EPT sealer. (includes test-drive)	0.9 hr	06201	07302	A18045E	72430-T2G-A01
8261C3	Replace left front trim (V6). Clean and apply EPT sealer. (includes test-drive)	0.9 hr			A18045F	

Skill Level: Repair Technician

INSPECTION

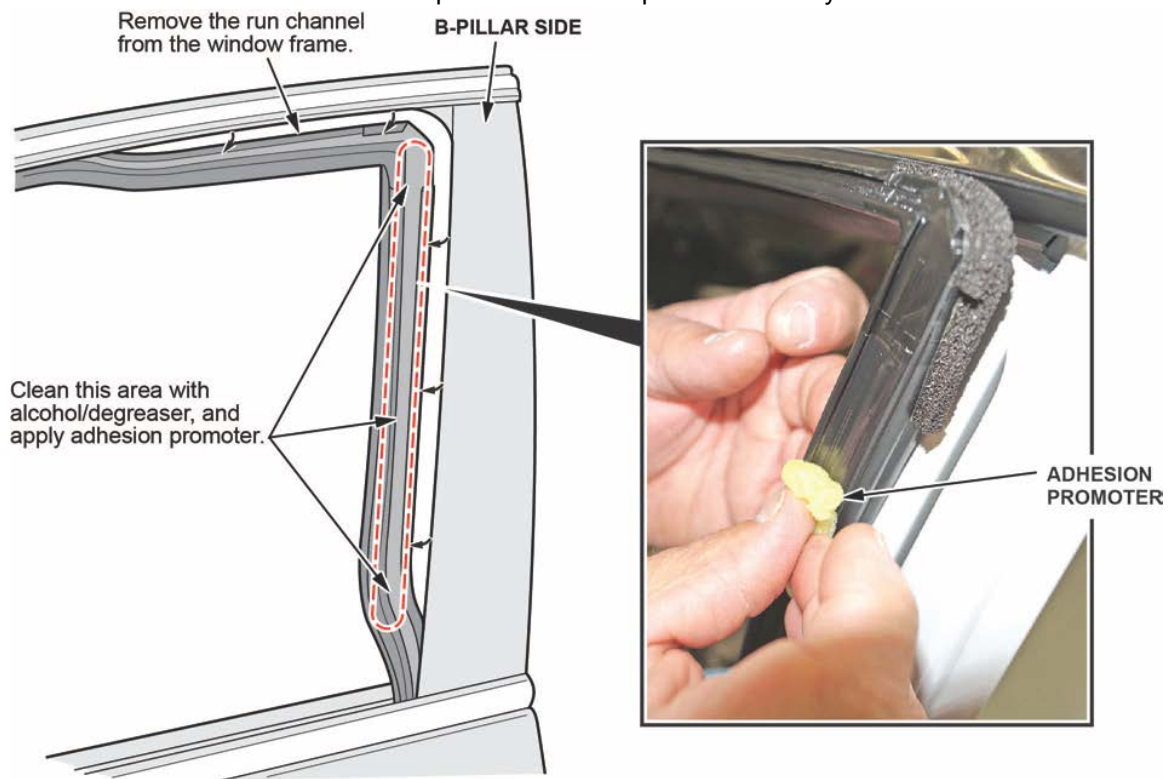
- Test-drive the vehicle to determine the location(s) of the wind noise.
Is the wind noise heard at ear level from either the driver's or front passenger's windows or along the B-pillar?
Yes - Go to step 2.
No - This bulletin does not apply. Continue with normal system troubleshooting.
- Tape off either the driver's or front passenger's windows or along the B-pillar.
Does the noise go away?
Yes - Go to step 3.
No - This bulletin does not apply. Continue with normal system troubleshooting.
- Inspect the front door outer sash trim. Press every 20-30 mm, and listen for a sticking noise. Click [HERE](#) for an example of the noise.
Did you hear a sticking noise while pressing on the outer sash trim?
Yes - Do REPAIR PROCEDURE - A and B.
No - Do REPAIR PROCEDURE - A only.
- Visually check for a gap between the sash trim and body. Click [HERE](#) for an example.
Is there a gap?
Yes - Do REPAIR PROCEDURE - A and B.
No - Do REPAIR PROCEDURE - A only.

REPAIR PROCEDURE A

NOTE

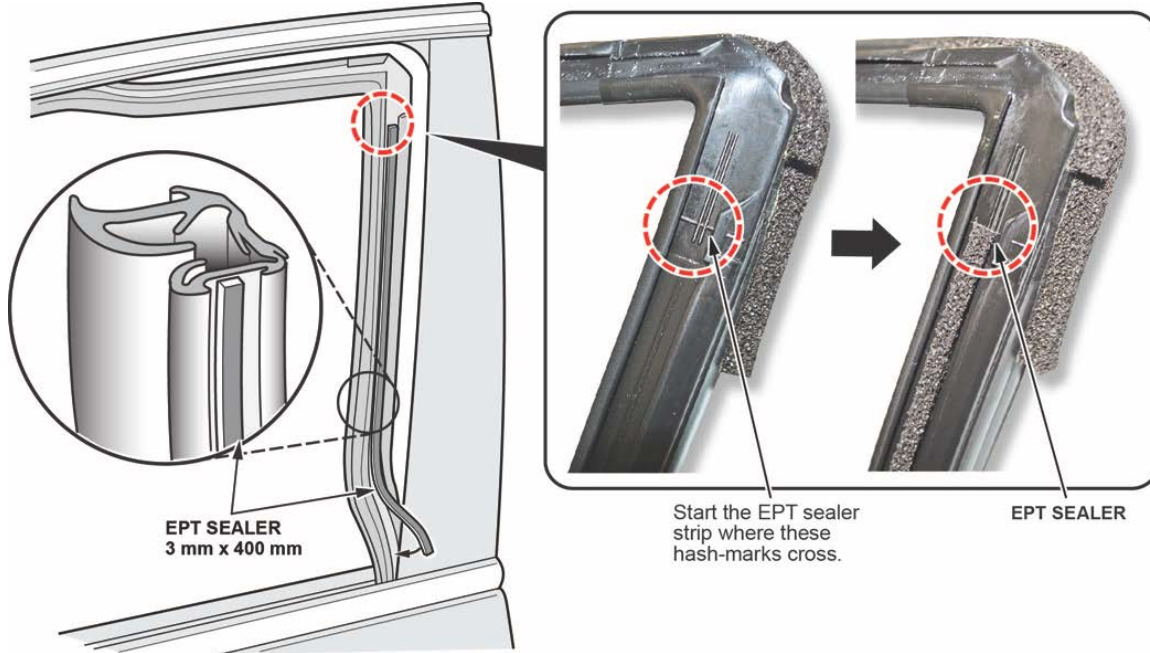
Repair only the affected side(s).

1. Remove the run channel from the upper part of the door frame.
2. Remove the run channel from the top corner of the B-pillar to the body line.



3. Clean the run channel groove along the B-pillar with isopropyl alcohol.
4. Apply primer (3M Adhesion Promoter) to the run channel groove along the B-pillar.

5. Cut a strip of EPT sealer that measures 3 mm x 400 mm, and attach it to the groove of the run channel. Start at the top corner, and install the strip down the run channel. Center the strip of EPT sealer around the hash marks on the run channel as shown.



- Install the run channel by attaching at the corner.
- Install the run channel down the B-pillar by attaching the outside edge first, then attaching the inside edge.
- Install the run channel along the top of the door frame.

NOTE

The corner may require some force to be properly installed.

6. Push the run channel up against the sash trim to set the EPT sealer, then check for any gaps or visible sealer.
7. Make sure that the noise is gone.

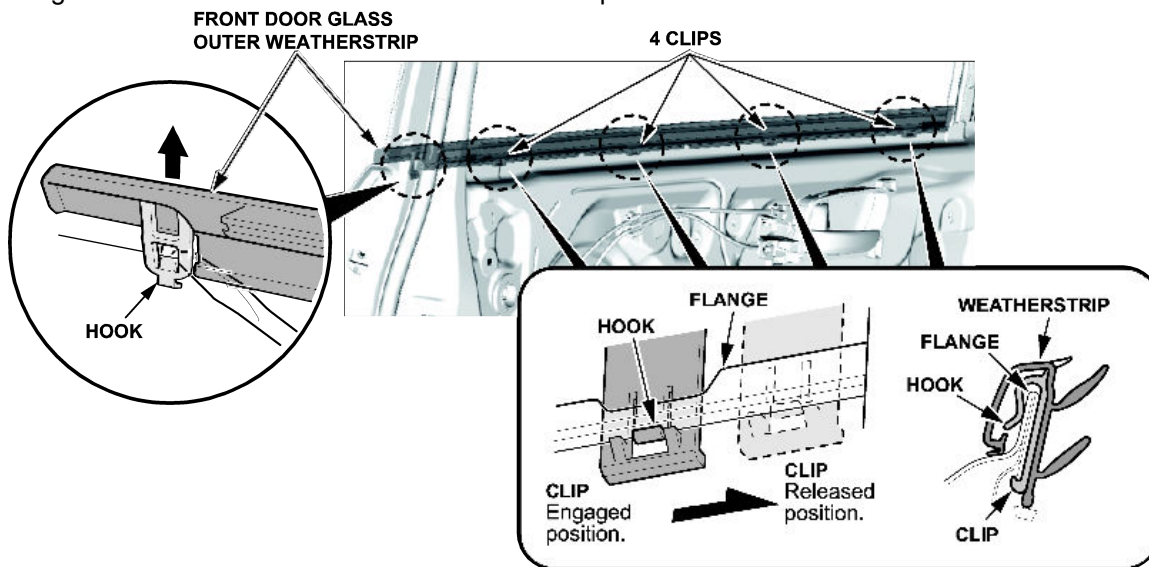
REPAIR PROCEDURE B

NOTE

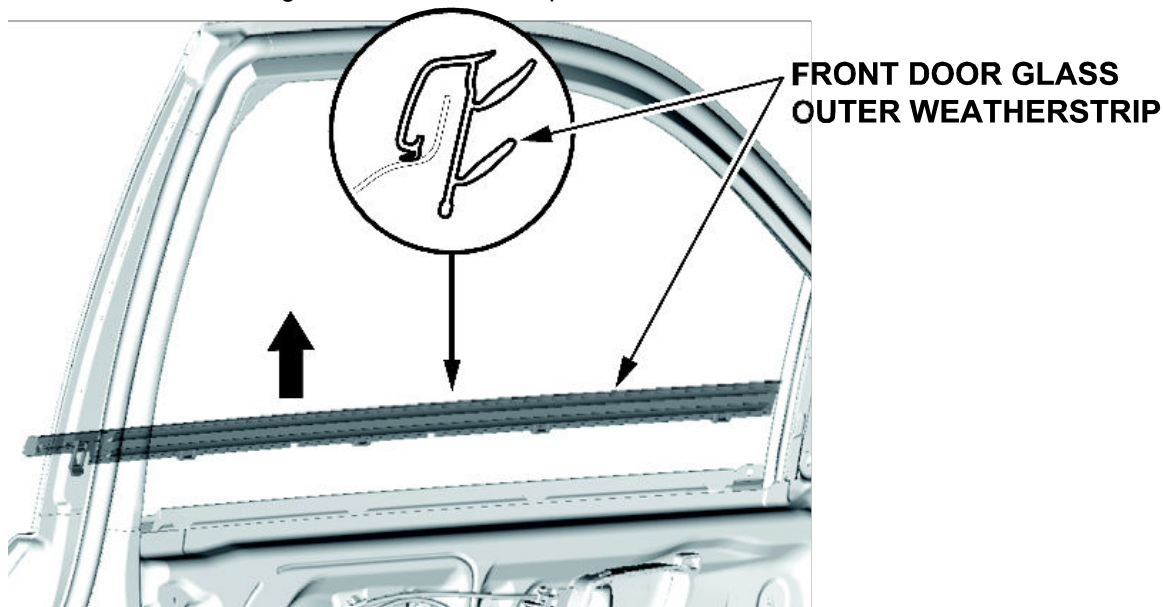
Repair only the affected side(s).

Sash Trim Replacement

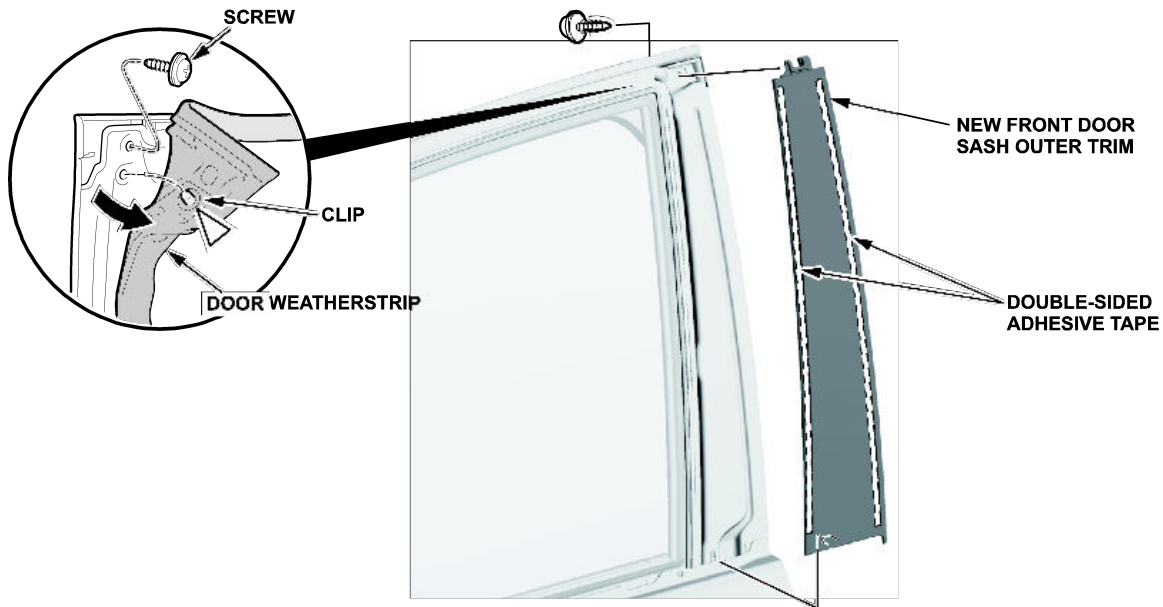
1. Remove the following parts. Refer to the service information.
 - Tweeter cover
 - Front door panel
 - Front door plastic cover (if needed)
 - Door mirror
2. From the inside of the door, slide the clips on the front door glass outer weatherstrip to release the hooks from the flanges on the door. Release the hook with a flat-tip screwdriver from inside of the door.



3. Remove the front door glass outer weatherstrip.



4. Lightly pull away the door weatherstrip from the top corner just enough to remove the screw on the end of the chrome molding. Lightly pull away the top end of the chrome molding, detach the clip, then remove the door sash trim.



5. Clean the door sash trim area with isopropyl alcohol/degreaser, then install the new door sash trim.
6. Install the screw holding the door sash trim.
7. Install all removed parts.
8. Make sure that the noise is gone.

END