



SERVICE CAMPAIGN BULLETIN

Reference:

NTB18-051

Date:

July 19, 2018

VOLUNTARY SERVICE CAMPAIGN 2013-2017 SENTRA; ECM REPROGRAM

CAMPAIGN ID #s: PM827 and PC633
APPLIED VEHICLES: 2013-2017 Sentra (B17)
APPLIED ENGINE: MRA8DE (non-turbo)

**Check Service COMM or Dealer Business Systems (DBS)
National Service History to confirm campaign eligibility.**

INTRODUCTION

Nissan is conducting this voluntary service campaign on certain specific model year 2013-2017 Sentra vehicles that are currently registered in the states of Arizona or Nevada. 2013-2014 Sentra vehicles will have the PCV valve replaced, and the Engine Control Module (ECM) software reprogrammed. 2015-2017 Sentra vehicles will have the ECM software reprogrammed only. This service will be performed at no charge to the customer for parts or labor.

IDENTIFICATION NUMBER

Nissan has assigned identification numbers PM827 and PC633 to this campaign. The correct number must appear on all communication and documentation of any nature dealing with this campaign.

DEALER RESPONSIBILITY

Dealers are to repair vehicles falling within range of this campaign that enter the service department. This includes vehicles purchased from private parties, vehicles presented by transient (tourists) owners, and vehicles in a dealer's inventory.

Nissan Bulletins are intended for use by qualified technicians, not 'do-it-yourselfers'. Qualified technicians are properly trained individuals who have the equipment, tools, safety instruction, and know-how to do a job properly and safely. NOTE: If you believe that a described condition may apply to a particular vehicle, DO NOT assume that it does. See your Nissan dealer to determine if this applies to your vehicle.

SERVICE PROCEDURE

2013-2014 Sentra Only: Inspect / Replace PCV Valve

1. Open the engine hood and locate the PCV valve.
2. Inspect the color of the PCV valve.

If the PCV valve is orange, as shown in Figure A:

- Replace the PCV valve.
- If needed, refer to the Electronic Service Manual (ESM), section EM-Engine Mechanical, for replacement information.
- Use the new PCV valve listed in the Parts Information.
- The new PCV valve is “black” color.

If the PCV valve is black:

- DO NOT replace – go to the next page, **2013-2017 Sentra: Reprogram ECM.**

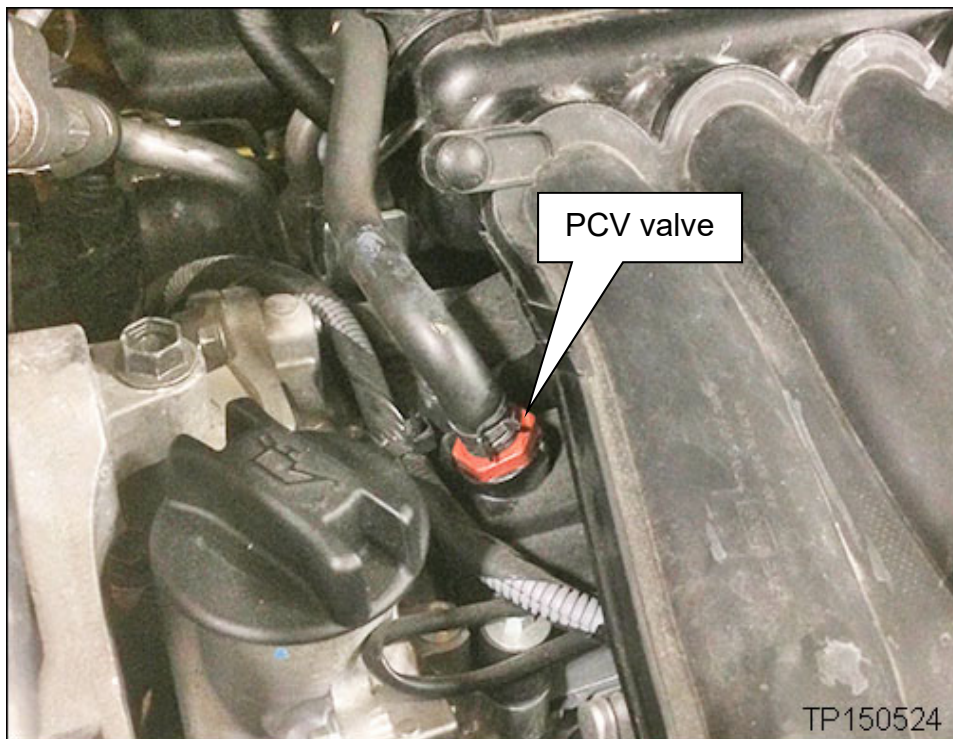


Figure A

2013-2017 Sentra: Reprogram ECM

IMPORTANT: Before starting, make sure:

- ASSIST on the CONSULT PC has been synchronized (updated) to the current date.
- All CONSULT-III plus (C-III plus) software updates (if any) have been installed.
- The CONSULT PC is connected to the Internet (Wi-Fi or cable).

NOTE:

- Most instructions for reprogramming with C-III plus are displayed on the CONSULT PC screen.
- If you are not familiar with the reprogramming procedure, *click here*. This will link you to the "CONSULT- III plus (C-III plus) ECM Reprogramming" general procedure.
- Take the vehicle for a 10 minute drive in order to meet the following Idle Air Volume Learn (IAVL) conditions:
 - Engine coolant temperature: 70 -100°C (158 -212°F)
 - Battery voltage: More than 12.9V (At idle)
 - Transmission: Warmed up



Figure B

- After reprogramming is complete, you will be required to perform Idle Air Volume Learn. The above condition are required for Idle Air Volume Learn to complete.

CAUTION:

- Connect the GR8 to the 12V battery and select ECM Power Supply Mode. If the vehicle battery voltage drops below 12.0V or rises above 15.5V during reprogramming, the ECM may be damaged.
- Be sure to turn OFF all vehicle electrical loads. If a vehicle electrical load remains ON, the ECM may be damaged.
- Be sure to connect the AC Adapter. If the CONSULT PC battery voltage drops during reprogramming, the process will be interrupted and the ECM may be damaged.
- Turn OFF all external Bluetooth® devices (e.g., cell phones, printers, etc.) within range of the CONSULT PC and the plus VI. If Bluetooth® signal waves are within range of the CONSULT PC and plus VI during reprogramming, reprogramming may be interrupted and the ECM may be damaged.

1. Connect the CONSULT PC to the vehicle to begin the reprogramming procedure.
- 2 Start C-III plus.
3. Wait for the plus VI to be recognized/connected.
 - The serial number will display when the plus VI is recognized/connected.
4. Select **Re/programming, Configuration**.

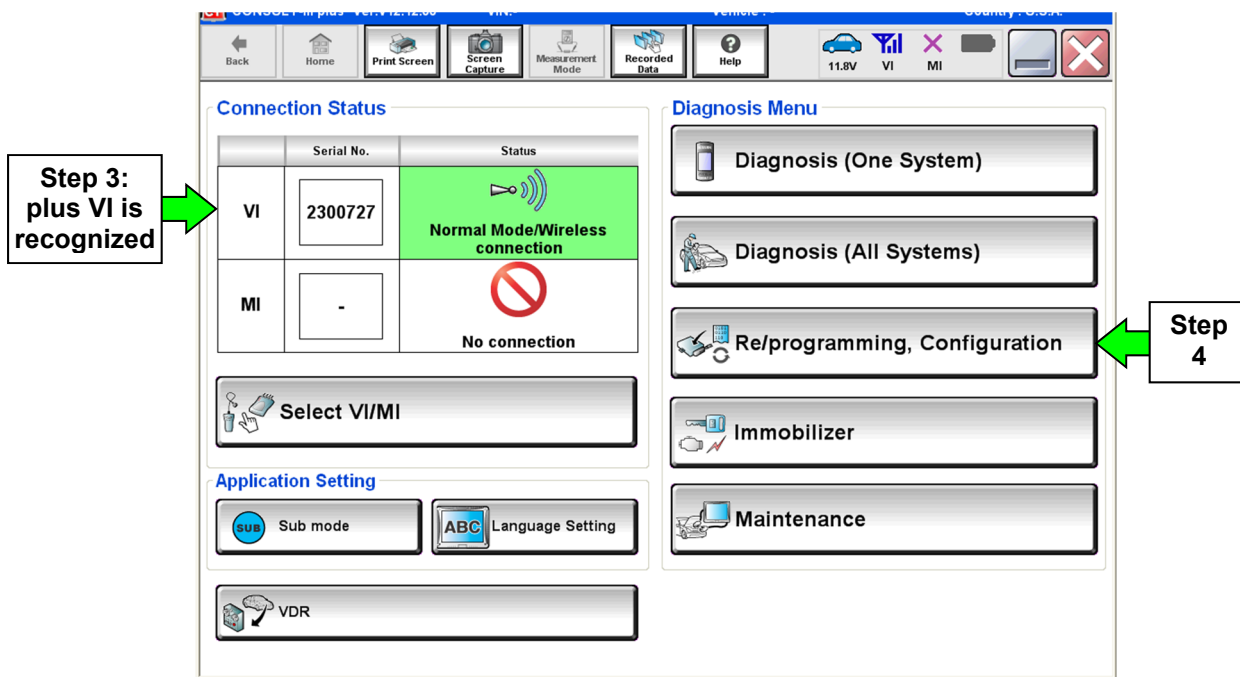


Figure 1

5. Follow the on-screen instructions and navigate the C-III plus to the screen shown in Figure 2 on the next page.

6. When you get to the screen shown in Figure 2, confirm this bulletin applies as follows.
- A. Find the ECM **Part Number** and write it on the repair order.

NOTE: This is the current ECM Part Number (P/N).

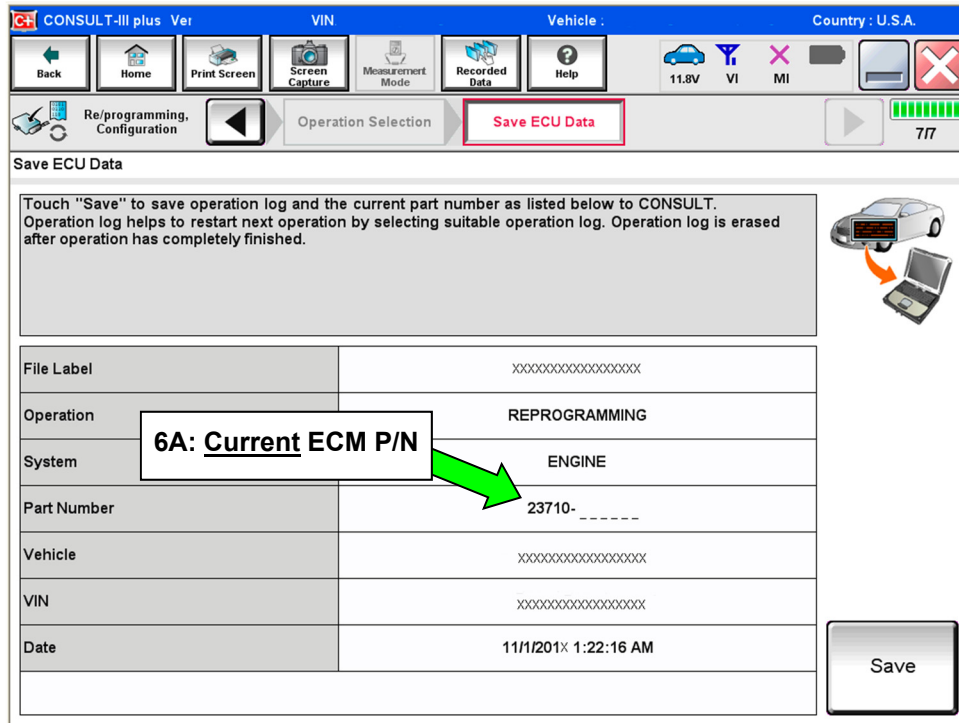


Figure 2

- B. Compare the P/N you wrote down to the numbers in the **Current ECM Part Number** column in **Table A** on the next page.
- If there is a match, continue with the reprogramming procedure.
 - If there is not a match, reprogramming is not needed. Proceed to page 12, **CLAIMS INFORMATION**, "Reprogramming Not Needed".

Table A

MODEL: SENTRA	CURRENT ECM PART NUMBER: 23710-
2013	3RH0A, 3RH0B, 3RH0D 3RH1A, 3RH1B, 3RH1D 3RH2A, 3RH2B, 3RH2D, 3RH2E 3RH3A, 3RH3B, 3RH3D, 3RH3E 3RJ0B, 3RJ1B 3SG8B, 3SG8C, 3SG8E 3SG9B, 3SG9C, 3SG9E 3SZ0D, 3SZ0E 3SZ1D, 3SZ1E
2014	3RT0B, 3RT1B 3RU6B, 3RU6C, 3RU6E 3RU7B, 3RU7C, 3RU7E 3RU8B, 3RU8C, 3RU8E 3RU9B, 3RU9C, 3RU9E 3SR6A, 3SR7A 9AM4D, 9AM4E 9AM5D, 9AM5E
2015	4AT2A, 4AT2B, 4AT2C 4AT4A, 4AT4B, 4AT4C, 4AT4D 4AT6A, 4AT6B, 4AT6C, 4AT6D 4AT8A, 4AT8B, 4AT8C, 4AT8D, 4AT8E
2016	4AF0A, 4AF1A, 4AF2A, 4AF3A, 4AF4A, 4AF5A 4AF0B, 4AF1B, 4AF2B, 4AF3B, 4AF4B, 4AF5B 4AF0D, 4AF1D, 4AF2D, 4AF3D, 4AF4D, 4AF5D
2017	3SH4B, 3SH4C, 3SH4D 3SH5B, 3SH5C, 3SH5D, 3SH5E 3SH6B, 3SH6C, 3SH6D, 3SH6E 3SH7B, 3SH7C, 3SH7D, 3SH7E 3SH8A 3SR8A, 3SR9A

7. Follow the on-screen instructions to navigate C-III plus and reprogram the ECM.

NOTES:

- In some cases, more than one new P/N for reprogramming is available.
 - In this case, the screen in Figure 3 displays.
 - Select and use the reprogramming option that **does not** have the message “Caution! Use ONLY with NTBXX-XXX”.
- If you get this screen and it is blank (no reprogramming listed), it means there is no reprogramming available for this vehicle.

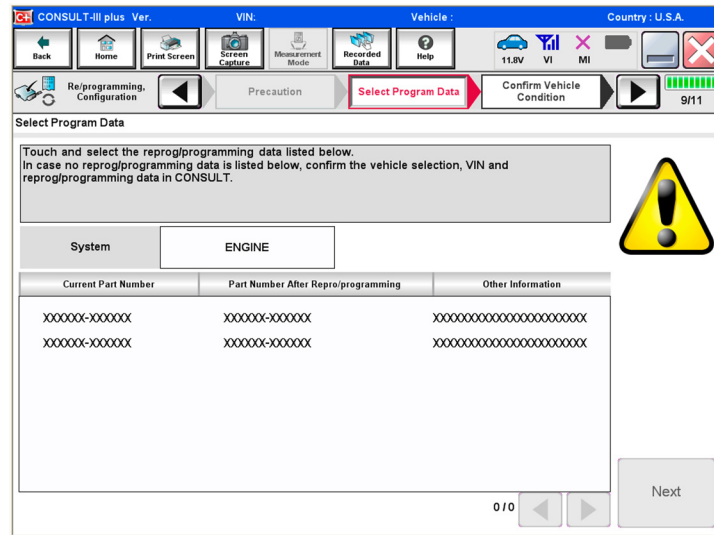


Figure 3

- Before reprogramming will start, you will be required to enter your User Name and Password.
 - The CONSULT PC must be connected to the Internet (Wi-Fi or cable).
 - If you do not know your User Name and Password, contact your Service Manager.

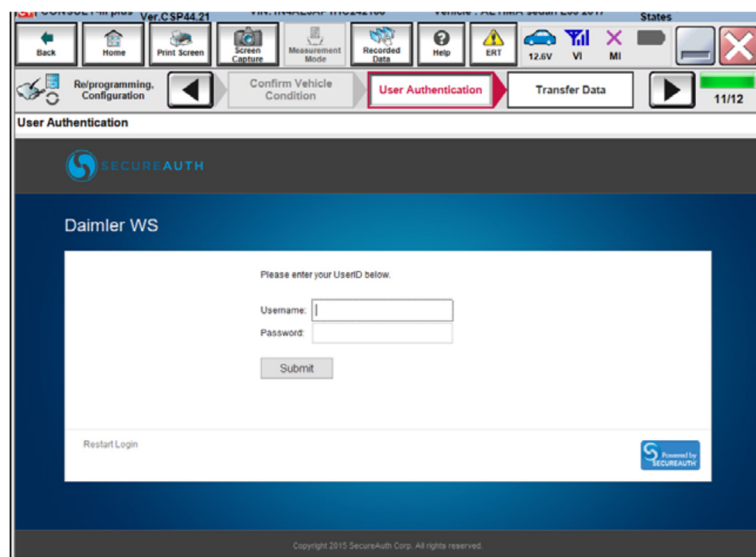


Figure 4

8. When the screen in Figure 5 displays, reprogramming is complete.

NOTE: If the screen in Figure 5 does not display (indicating that reprogramming did not complete), refer to the information on page 9.

9. Disconnect the battery charger from the vehicle.

10. Select **Next**.

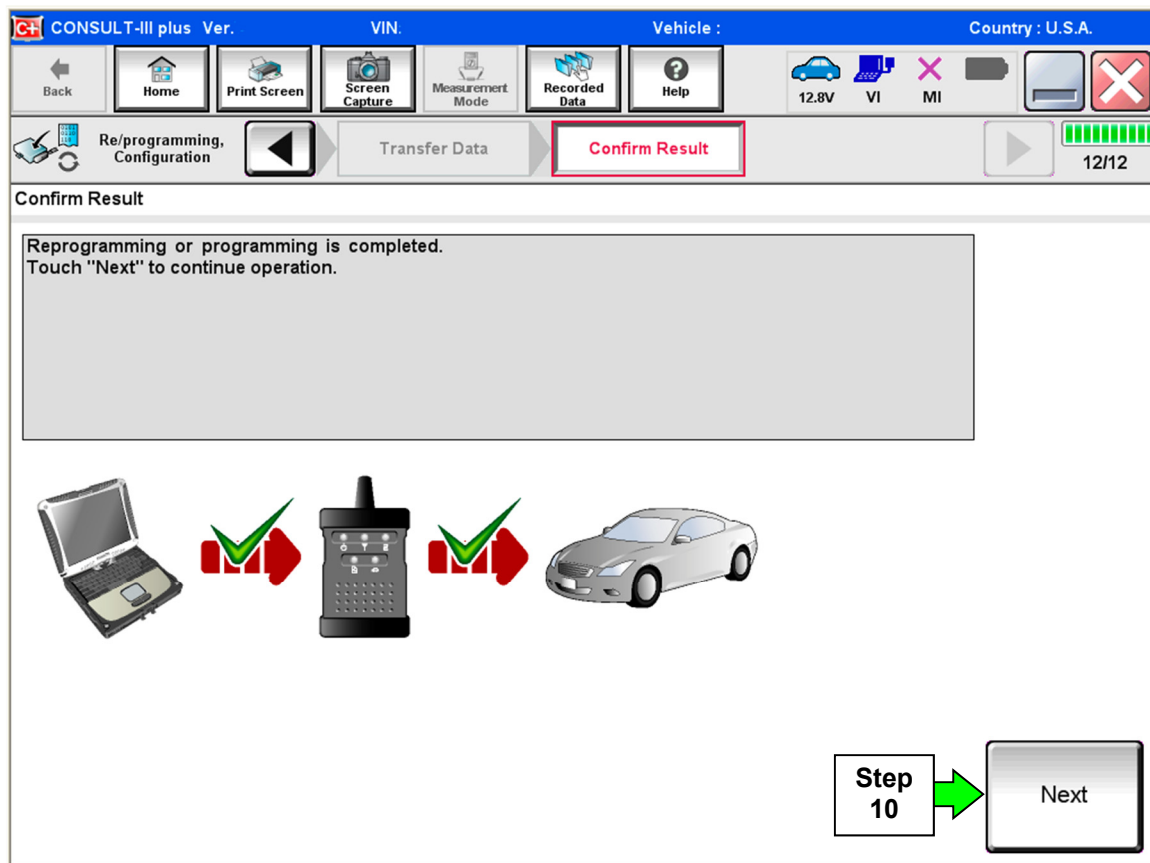


Figure 5

NOTE:

- In the next steps, starting on page 10, you will perform Throttle Valve Closed Position, Idle Air Volume Learn, Accelerator Closed Position, and DTC erase.
- These operations are required before C-III plus will provide the final reprogramming confirmation report.

ECM Recovery

Do not disconnect the plus VI or shut down C-III plus if reprogramming does not complete.

If reprogramming does not complete and the “!” icon displays as shown in Figure 6:

- Check battery voltage (12.0–15.5 V).
- Ignition is ON, engine OFF.
- External Bluetooth® devices are OFF.
- All electrical loads are OFF.
- **Select retry and follow the on screen instructions.**
- “Retry” may not go through on first attempt and can be selected more than once.

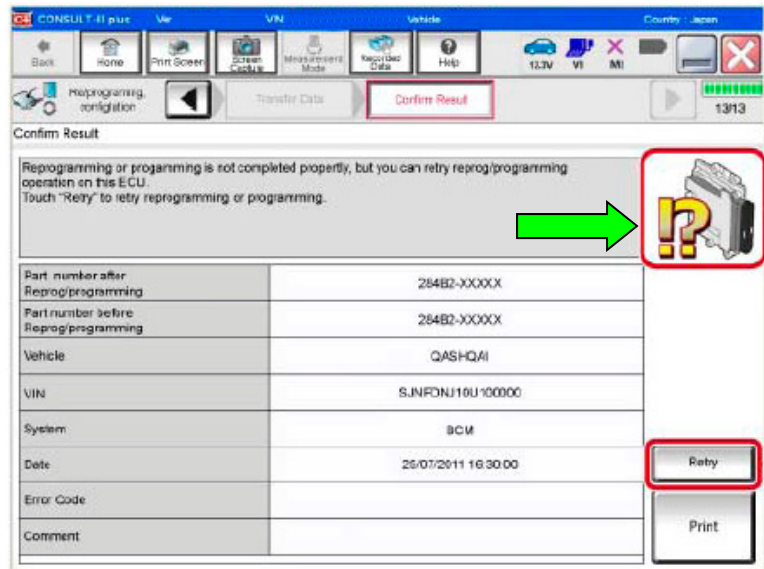


Figure 6

If reprogramming does not complete and the “X” icon displays as shown in Figure 7:

- Check battery voltage (12.0 – 15.5 V).
- CONSULT A/C adapter is plugged in.
- Ignition is ON, engine OFF.
- Transmission is in Park.
- All C-III plus / VI cables are securely connected.
- All C-III plus updates are installed.
- **Select Home, and restart the reprogram procedure from the beginning.**

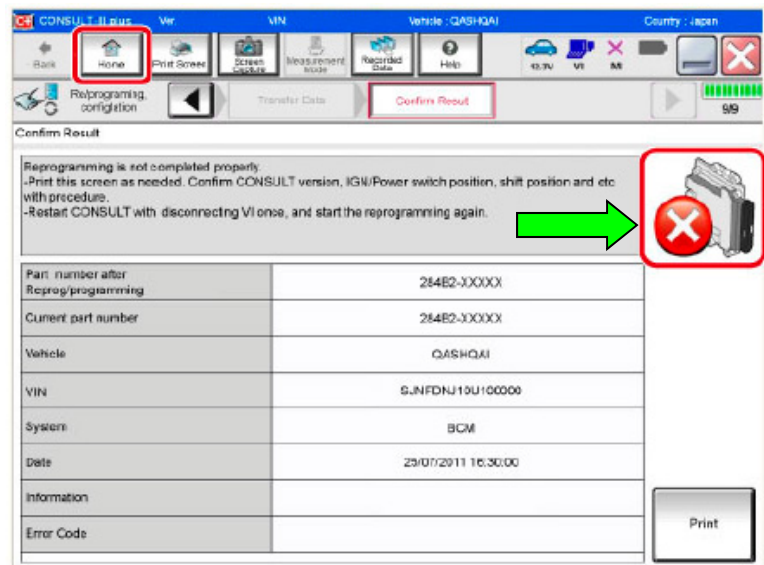


Figure 7

11. Follow the on-screen instructions to perform the following:

- **Throttle Valve Closed Position.**
- **Idle Air Volume Learn (IAVL).**

NOTE:

- **Listed below are common conditions required for IAVL to complete.**
- **If IAVL does not complete within a few minutes, a condition may be out of range.**
- **Refer to the appropriate ESM for specific conditions required for the vehicle you are working on.**
 - Engine coolant temperature: 70-100°C (158-212°F)
 - Battery voltage: More than 12.9V (At idle)
 - Selector lever: P or N
 - Electric load switch: OFF (Air conditioner, headlamp, rear window defogger)
 - Steering wheel: Neutral (Straight-ahead position)
 - Vehicle speed: Stopped
 - Transmission: Warmed up
- **Accelerator Pedal Close Position Learning**
- **Erase DTCs**

Continue to the next page.

- 12. When the entire reprogramming process is complete, the screen in Figure 8 will display.
- 13. Verify the before and after part numbers are different.
- 14. Print a copy of this screen (Figure 8) and attach it to the repair order for warranty documentation.
- 15. Select **Confirm**.

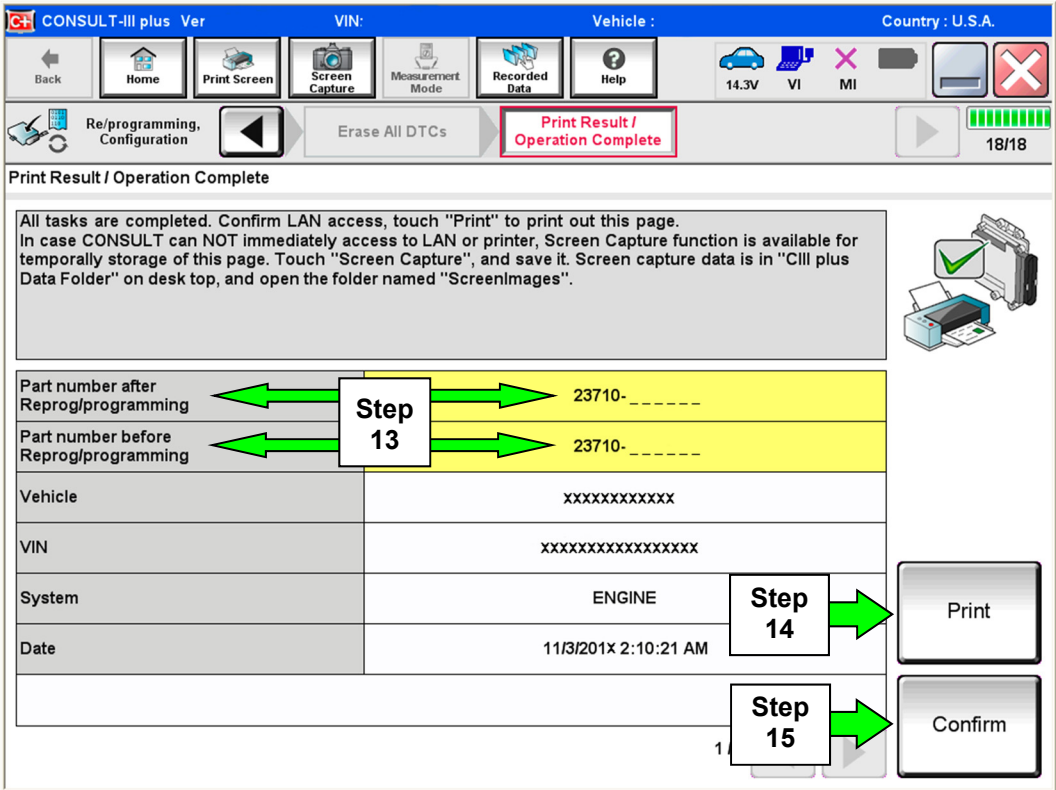


Figure 8

- 16. Close C-III plus.
- 17. Turn the ignition OFF.
- 18. Disconnect the plus VI from the vehicle.

PARTS INFORMATION

DESCRIPTION	PART NUMBER	QUANTITY
PCV Valve (Black Color)	11810-6N202	1 *

* If needing replacement. See page 2.

CLAIMS INFORMATION

Submit a "CM" line claim using the following claims coding:

CAMPAIGN ("CM") ID	DESCRIPTION	OP CODE	FRT
PM827	ECM Reprogramming	PM8270	0.4 hrs
PM827	ECM Reprogramming and PCV Valve Replacement (only Sentra MY13 & MY14) *	PM8271	0.5 hrs
PM827	Reprogramming Not Needed	PM8272	0.3 hrs
PC633	ECM Reprogramming	PC6331	0.4 hrs
PC633	ECM Reprogramming and PCV Valve Replacement (only Sentra MY13 & MY14) *	PC6332	0.5 hrs
PC633	Reprogramming Not Needed	PC6333	0.3 hrs

* If PCV valve replacement is performed. See page 2.