



---

# SERVICE CAMPAIGN BULLETIN

---

Reference:

NTB18-048

Date:

July 19, 2018

---

## VOLUNTARY SERVICE CAMPAIGN 2013-2017 ALTIMA ENGINE CONTROL MODULE REPROGRAM

**CAMPAIGN ID #:** PC633  
**APPLIED VEHICLES:** 2013-2017 Altima (L33)  
**APPLIED ENGINE:** QR25DE (4 cylinder engine)

**Check Service COMM or Dealer Business Systems (DBS)  
National Service History to confirm campaign eligibility.**

### INTRODUCTION

Nissan is conducting this voluntary service campaign on certain specific model year 2013-2017 Altima vehicles that are currently registered in the States of Arizona or Nevada. The Engine Control Module (ECM) software will be reprogrammed. This service will be performed at no charge to the customer for parts or labor.

### IDENTIFICATION NUMBER

Nissan has assigned identification number PC633 to this campaign. This number must appear on all communication and documentation of any nature dealing with this campaign.

### DEALER RESPONSIBILITY

Dealers are to repair vehicles falling within range of this campaign that enter the service department. This includes vehicles purchased from private parties, vehicles presented by transient (tourists) owners, and vehicles in a dealer's inventory.

Nissan Bulletins are intended for use by qualified technicians, not 'do-it-yourselfers'. Qualified technicians are properly trained individuals who have the equipment, tools, safety instruction, and know-how to do a job properly and safely. NOTE: If you believe that a described condition may apply to a particular vehicle, DO NOT assume that it does. See your Nissan dealer to determine if this applies to your vehicle.

## SERVICE PROCEDURE

**IMPORTANT:** Before starting, make sure:

- ASIST on the CONSULT PC has been synchronized (updated) to the current date.
- All CONSULT-III plus (C-III plus) software updates (if any) have been installed.
- The CONSULT PC is connected to the Internet (Wi-Fi or cable).

**NOTE:**

- Most instructions for reprogramming with CONSULT-III plus (C-III plus) are displayed on the CONSULT PC screen.
- If you are not familiar with the reprogramming procedure, click here. This will link you to the "CONSULT- III plus (C-III plus) Reprogramming" general procedure.
- Take the vehicle for a 10 minute drive in order to meet the following Idle Air Volume Learn (IAVL) conditions:

- Engine coolant temperature: 70 - 105°C (158 - 221°F)
- Battery voltage: More than 12.9V (at idle)
- Transmission: Warmed up



Figure B

**NOTE:** After reprogramming is complete, you will be required to perform Throttle Valve Closed Position, Idle Air Volume Learn, Accelerator Closed Position, and DTC erase. The above conditions are required for IAVL to complete.

**CAUTION:**

- Connect the **GR8** to the 12V battery and select ECM Power Supply Mode. If the vehicle battery voltage drops below 12.0V or above 15.5V during reprogramming, the ECM may be damaged.
- Be sure to turn OFF all vehicle electrical loads. If a vehicle electrical load remains ON, the ECM may be damaged.
- Be sure to connect the AC Adapter. If the CONSULT PC battery voltage drops during reprogramming, the process will be interrupted and the ECM may be damaged.
- Turn OFF all external Bluetooth® devices (e.g., cell phones, printers, etc.) within range of the CONSULT PC and the VI. If Bluetooth® signal waves are within range of the CONSULT PC during reprogramming, reprogramming may be interrupted and the ECM may be damaged.

1. Connect the CONSULT PC to the vehicle to begin the reprogramming procedure.
2. Start C-III plus.
3. Wait for the plus VI to be recognized/connected.
  - The serial number will display when the plus VI is recognized/connected.
4. Select **Re/programming, Configuration**.

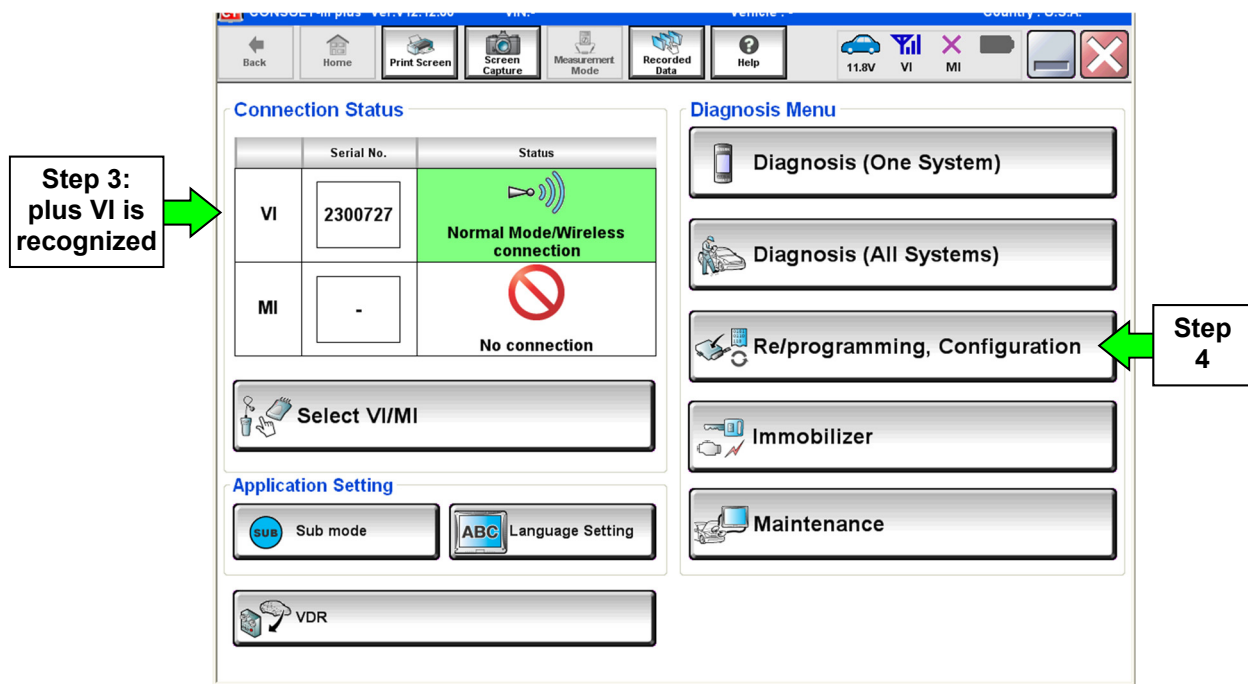


Figure 1

5. Follow the on-screen instructions and navigate C-III plus to the screen shown in Figure 2 on the next page.

6. When you get to the screen shown in Figure 2, confirm this bulletin applies as follows.

A. Find the ECM **Part Number** and write it on the repair order.

**NOTE:** This is the current ECM Part Number (P/N).

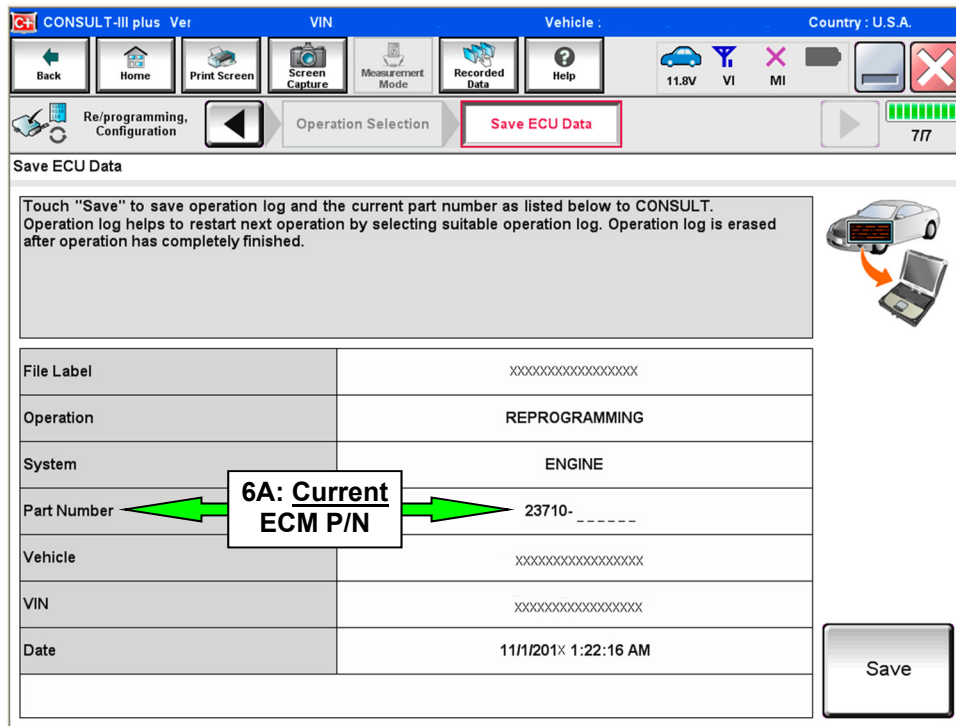


Figure 2

B. Compare the P/N you wrote down to the numbers in the **Current ECM Part Number** column in **Table A** on the next page.

- If there is a match, continue with the reprogramming procedure. Proceed to step 7.
- If there is not a match, reprogramming is not needed. Proceed to **CLAIMS INFORMATION** section for "Does Not Require Reprogram".

**Table A**

<b>MODEL</b>	<b>YEAR</b>	<b>CURRENT ECM PART NUMBER: 23710-</b>
<b>Altima with QR25DE</b>	<b>2013</b>	3TA0A, 3TA0B, 3TA0C 3TA1B, 3TA1C, 3TA1D 3TA6A, 3TA6B, 3TA6C, 3TA6D, 3TA6E 3TA7A, 3TA7B, 3TA7C, 3TA7D, 3TA7E 3TA8A, 3TA8B, 3TA8C, 3TA8D, 3TA8E 3TM3A, 3TM3B, 3TM4A, 3TM4B 3TM5A, 3TM5B, 3TM6A, 3TM6B 3TM7A, 3TM7B, 3TM8A, 3TM8B 3TY0A, 3TY0B, 3TY0C 3TY1A, 3TY1B, 3TY1C 3TY6A, 3TY6B, 3TY6C, 3TY6D, 3TY6E 3TY7A, 3TY7B, 3TY7C, 3TY7D, 3TY7E 3TY8A, 3TY8B, 3TY8C, 3TY8D, 3TY8E
	<b>2014</b>	3TV3A, 3TV4A, 3TV5A, 3TV6A, 3TV7A, 3TV8A 9HM3A, 9HM3B, 9HM3C, 9HM3D, 9HM3E 9HM4A, 9HM4B, 9HM4C, 9HM4D, 9HM4E 9HM5A, 9HM5B, 9HM5C, 9HM5D, 9HM5E 9HM6A, 9HM6B, 9HM6C, 9HM6D, 9HM6E 9HM7A, 9HM7B, 9HM7C, 9HM7D, 9HM7E 9HM8A, 9HM8B, 9HM8C, 9HM8D, 9HM8E
	<b>2015</b>	3GL3A, 3GL3B, 3GL3C 3GL4A, 3GL4B, 3GL4C 3GL5A, 3GL5B, 3GL5C 3GL6A, 3GL6B, 3GL7A, 3GL7B, 3GL8A, 3GL8B 9HP0A, 9HP0B, 9HP0C, 9HP0D, 9HP0E 9HP1A, 9HP1B, 9HP1C, 9HP1D, 9HP1E 9HP2A, 9HP2B, 9HP2C, 9HP2D, 9HP2E 9HP3A, 9HP3B, 9HP3C, 9HP3D, 9HP3E 9HP4A, 9HP4B, 9HP4C, 9HP4D, 9HP4E 9HP5A, 9HP5B, 9HP5C, 9HP5D, 9HP5E
	<b>2016</b>	3TH0A, 3TH1A, 3TH2A, 3TH3A, 3TH4A, 3TH5A 3TH6A, 3TH7A, 3TH8A, 3TH9A 3TY2A, 3TY2B, 3TY2C, 3TY2D, 3TY2E 3TY3A, 3TY3B, 3TY3C, 3TY3D, 3TY3E 3TY4A, 3TY4B, 3TY4C, 3TY4D, 3TY4E 3TY5A, 3TY5B, 3TY5C, 3TY5D, 3TY5E 3TY9A, 3TY9B, 3TY9C, 3TY9D, 3TY9E 9HN4A, 9HN4B, 9HN4C, 9HN4D, 9HN4E 9HN5A, 9HN5B, 9HN5C, 9HN5D, 9HN5E 9HN6A, 9HN6B, 9HN6C, 9HN6D, 9HN6E 9HN7A, 9HN7B, 9HN7C, 9HN7D, 9HN7E 9HN8A, 9HN8B, 9HN8C, 9HN8D, 9HN8E
	<b>2017</b>	3TF7A, 3TF8A, 3TF9A 9HL0A, 9HL0B, 9HL0D 9HL1A, 9HL1B, 9HL1D 9HL2A, 9HL2B, 9HL2D 9HL3A, 9HL3B, 9HL3D 9HL4A, 9HL4B, 9HL4D

7. Follow the on-screen instructions to navigate C-III plus and reprogram the ECM.

**NOTE:**

- In some cases, more than one new P/N for reprogramming is available.
  - If there is more than one new P/N, the screen in Figure 3 displays.
  - Select and use the reprogramming option that **does not** have the message “Caution! Use ONLY with NTBXX-XXX”.
- If you get this screen and it is blank (no reprogramming listed), it means there is no reprogramming available for this vehicle.

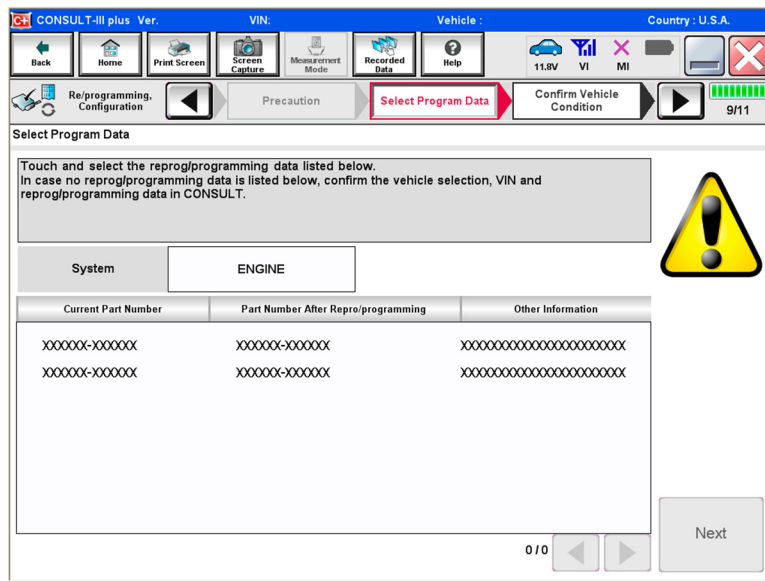


Figure 3

- Before reprogramming will start, you will be required to enter your User Name and Password.
  - The CONSULT PC must be connected to the Internet (Wi-Fi or cable).
  - If you do not know your User Name and Password, contact your Service Manager.

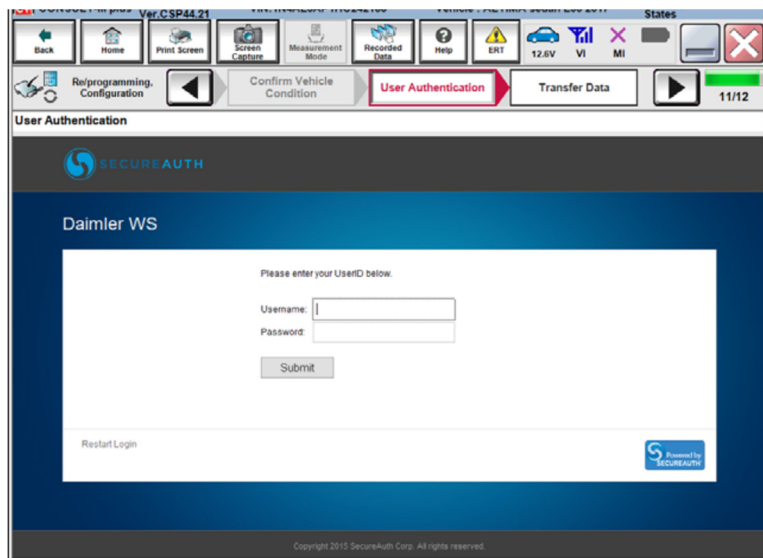


Figure 4

8. When the screen in Figure 5 displays, reprogramming is complete.

**NOTE:** If the screen in Figure 5 does not display (indicating that reprogramming did not complete), refer to the information on the next page.

9. Disconnect the battery charger from the vehicle.

10. Select **Next**.

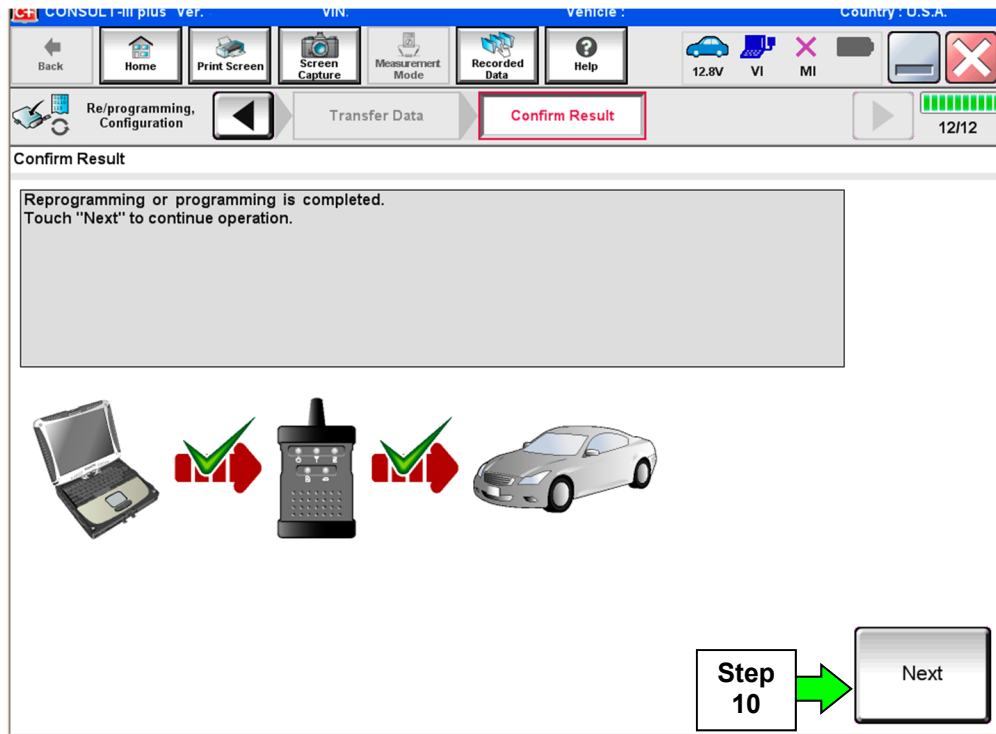


Figure 5

**NOTE:**

- In the next steps, starting on page 9, you will perform Throttle Valve Closed Position, Idle Air Volume Learn, Accelerator Closed Position, and DTC erase.
- These operations are required before C-III plus will provide the final reprogramming confirmation report.

## ECM recovery:

**Do not disconnect plus VI or shut down Consult III plus if reprogramming does not complete.**

If reprogramming does not complete and the “!?” icon displays as shown in Figure 6:

- Check battery voltage (12.0–15.5 V).
- Ignition is ON, engine OFF.
- External Bluetooth® devices are OFF.
- All electrical loads are OFF.
- **Select retry and follow the on screen instructions.**
- “Retry” may not go through on first attempt and can be selected more than once.

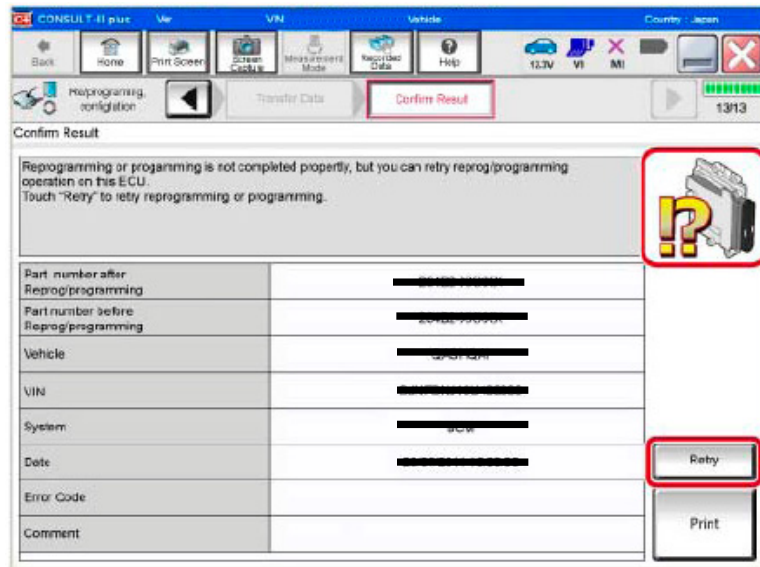


Figure 6

If reprogramming does not complete and the “X” icon displays as shown in Figure 7:

- Check battery voltage (12.0 – 15.5 V).
- CONSULT A/C adapter is plugged in.
- Ignition is ON, engine OFF.
- Transmission is in Park.
- All C-III plus / VI cables are securely connected.
- All C-III plus updates are installed.
- **Select Home, and restart the reprogram procedure from the beginning.**

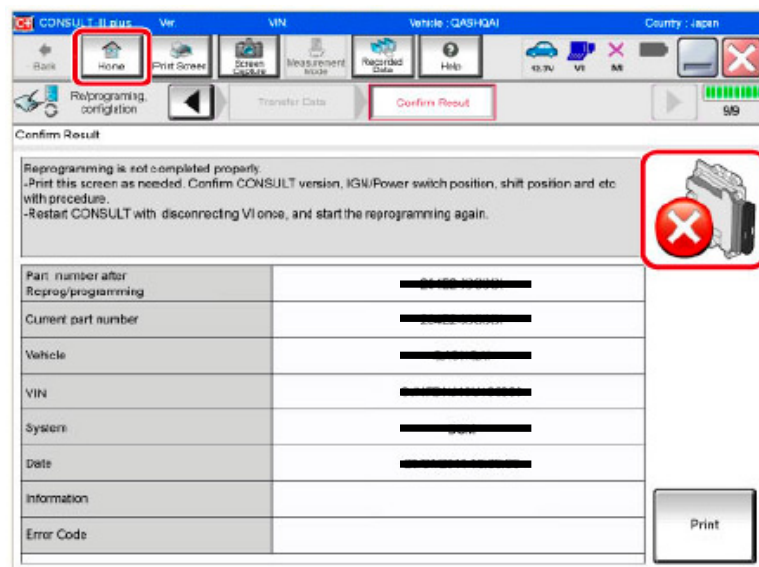


Figure 7



11. Follow the on-screen instructions to perform the following:

- **Throttle Valve Closed Position**
- **Idle Air Volume Learn (IAVL)**

**NOTE:**

- Listed below are common conditions required for IAVL to complete.
  - If IAVL does not complete within a few minutes, a condition may be out of range.
  - Refer to the appropriate Electronic Service Manual (ESM) for specific conditions required for the vehicle you are working on.
    - Engine coolant temperature: 70 -105°C (158 -221°F)
    - Battery voltage: More than 12.9V (At idle)
    - Selector lever: P or N
    - Electric load switch: OFF (Air conditioner, headlamp, rear window defogger)
    - Steering wheel: Neutral (Straight-ahead position)
    - Vehicle speed: Stopped
    - Transmission: Warmed up
- 
- **Accelerator Pedal Close Position Learning**
- 
- **Erase DTCs**

Continue to the next page.

12. When the entire reprogramming process is complete, the screen in Figure 8 will display.
13. Verify the before and after part numbers are different.
14. Print a copy of this screen (Figure 8) and attach it to the repair order for warranty documentation.
15. Select **Confirm**.

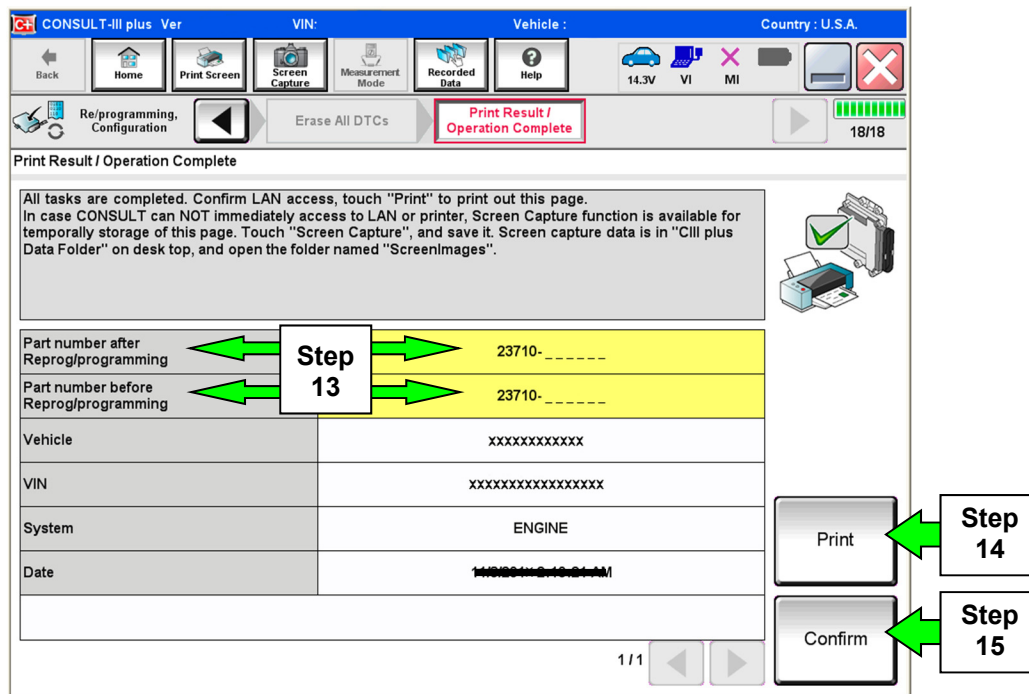


Figure 8

16. Close C-III plus.
17. Turn the ignition OFF.
18. Disconnect the plus VI from the vehicle.

## CLAIMS INFORMATION

Submit a Campaign (CM) line claim using the following claims coding:

CAMPAIGN ("CM") ID	DESCRIPTION	OP CODE	FRT
PC633	Reprogram ECM	PC6330	0.5 hrs.
	Does Not Require Reprogram	PC6333	0.3 hrs.

