



# Preliminary Information

## PIC6095C Diagnostic Aid: Part Identification For Next Generation Infotainment Components And Correct Labor Codes

### Models

Brand:	Model:	Model Years:	VIN:		Engine:	Transmissions:
			from	to		
All	All	2013 - 2019	All	All	All	All

### Supersession Statement

This PI was superseded to update Model Years. Please discard PIC6095B.

### Condition / Concern

The following information will aid dealer personnel in identifying infotainment components on the vehicles listed above to ensure that the correct component is ordered/replaced and the correct labor code is used for warranty submission when replacing or reprogramming the component.

**Note: If performing a Bulletin/PI/Field Action, please use any special Labor codes listed in the document.**

### Recommendations / Instructions

## ICS (Integrated Center Stack) -Display/Radio Control Assembly

ICS examples (See figure 1-6)

Replacement Labor Code: 3420700 - Use Published Labor Operation Time

Reprogram Labor Code: 2810325 - Use Published Labor Operation Time

**Note: Some technicians have replaced the ICS thinking they were replacing the radio. See figure 11 for radio example**





5



6



**OnStar (Telematics Control Module/VCIM)**

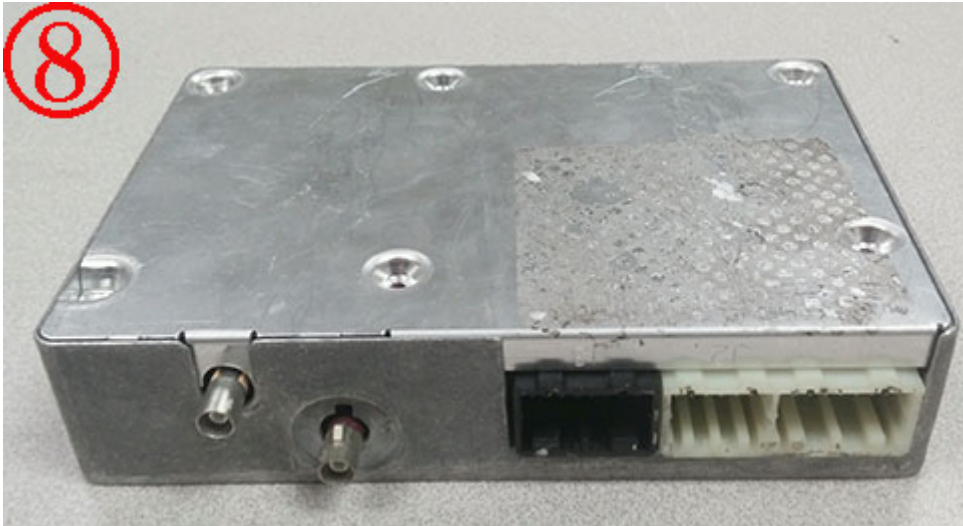
**Replacement Labor Code: 3422790 - Use published Labor Operation time**

**Reprogram Labor Code: 2810145 - Use published Labor Operation time**

**Examples (See figures 7- 8)**

**Note: Technicians have replaced VCIM's thinking they were replacing the HMI. Please see figures 9-10 for HMI examples**





### HMI (Human Machine Interface)

Replacement Labor Code: 3421060 - Use published Labor Operation time

Reprogram Labor Code: 2810345 - Use published Labor Operation time

Examples (See figures 9- Non Navigation HMI, 10- Navigation HMI)

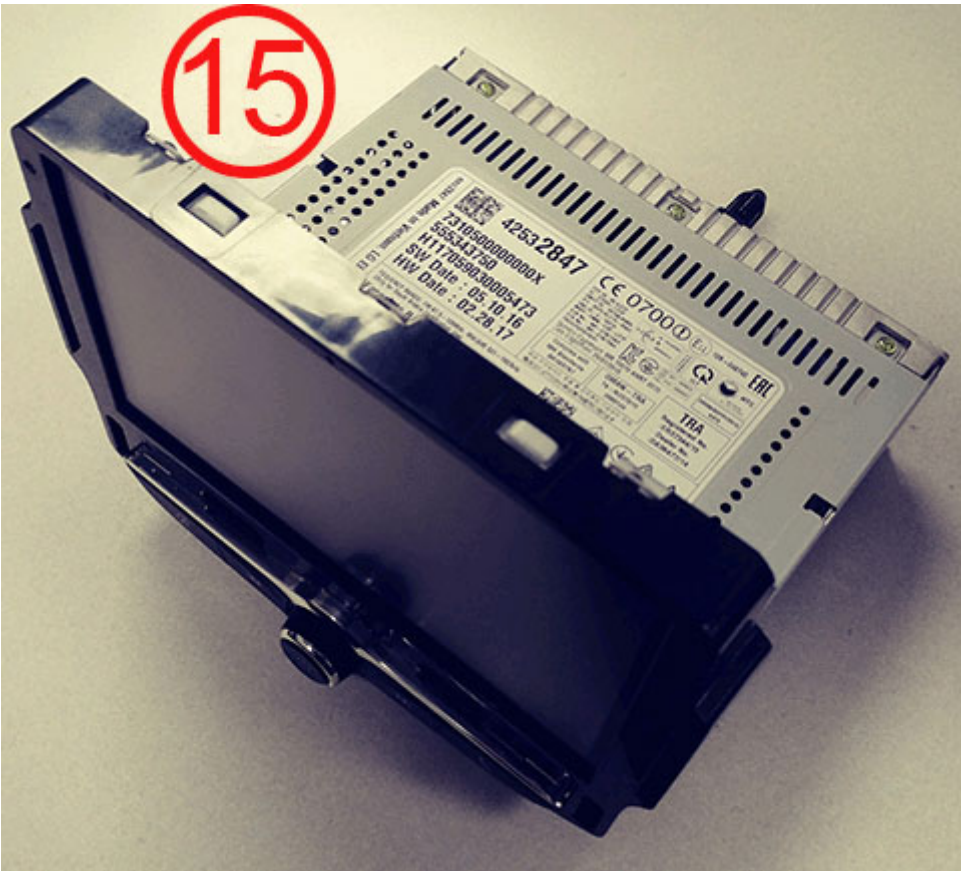


**Radio/Tuner**

**Replacement Labor Code: 3420840 - Use published Labor Operation time**

**Reprogram Labor Code: 2810335 - Use published Labor Operation time**

**Example (See figure 11, 14 and 15)**



**Radio Control Assembly (Corvette only)**



**Replacement Labor Code: 3420700 - Use published Labor Operation time**

**Reprogram Labor Code: 2810325 - Use published Labor Operation time**

**Example (See figure 12)**

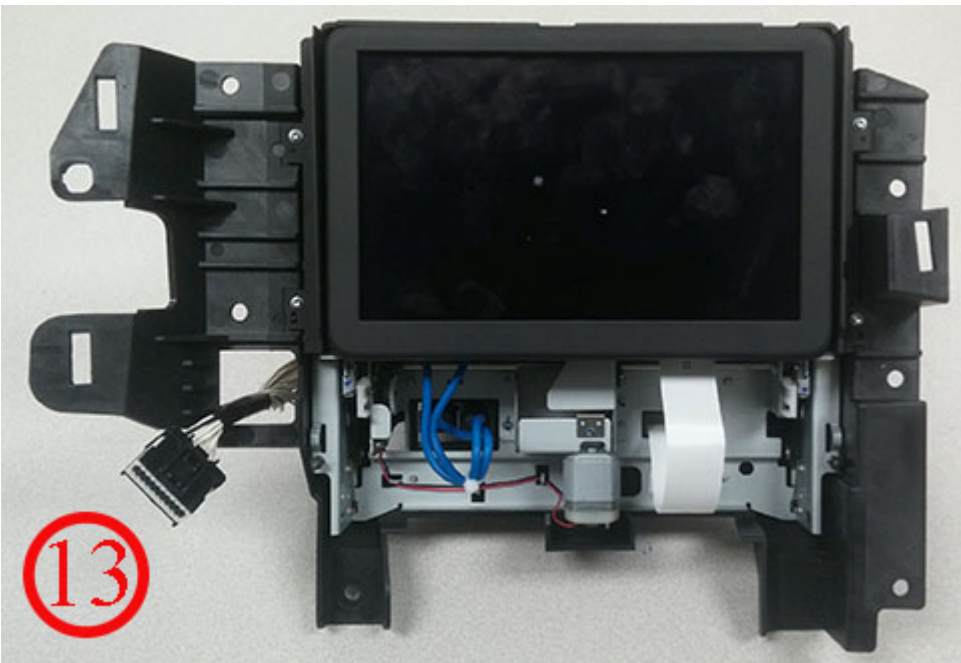


**Driver Information Display (Corvette only)**

**Replacement Labor Code: 3430990 - Use published Labor Operation time**

**No Programming Required**

**Example (See figure 13)**



Additional SI Keywords

CUE install installation intellilink mylink NGI replace replacement

