



---

# SERVICE BULLETIN

---

Classification:

BT18-008

Reference:

NTB18-042

Date:

June 15, 2018

---

## 2018 LEAF; FRONT DOOR WILL NOT OPEN

**APPLIED VEHICLES:** 2018 LEAF (ZE1)

### IF YOU CONFIRM

Either front door of an affected vehicle will not open with either the inside or outside door handle

and

The door handles, cables, and latch are in good working order

and

There is no damage to the door.

### ACTION

Inspect, and adjust as necessary, the gap between the lever on the latch and the tab of the stiffener.

- Go to this bulletin's Service Procedure for Inspection.

**CAUTION:** Do not bend the stiffener tab up or down only to adjust the gap. See this bulletin's Service Procedure for proper adjustment.

**IMPORTANT:** The purpose of ACTION (above) is to give you a quick idea of the work you will be performing. You **MUST** closely follow the entire SERVICE PROCEDURE as it contains information that is essential to successfully completing this repair.

Nissan Bulletins are intended for use by qualified technicians, not 'do-it-yourselfers'. Qualified technicians are properly trained individuals who have the equipment, tools, safety instruction, and know-how to do a job properly and safely. **NOTE:** If you believe that a described condition may apply to a particular vehicle, **DO NOT** assume that it does. See your Nissan dealer to determine if this applies to your vehicle.

## SERVICE PROCEDURE

### Inspection/Adjustment: Latch Lever-to-Stiffener Tab Gap

1. Remove the front door finisher of the affected door.
    - Refer to the Electronic Service Manual (ESM), section BODY INTERIOR-INTERIOR-INTERIOR-REMOVAL AND INSTALLATION-FRONT DOOR FINISHER for front door finisher removal.
- NOTE:** It may be intermittent that the door will not open. Attempt to open the door multiple times with both handles. If the door does not open normally, follow normal repair procedures for consequential damage during front door finisher removal (see Claims Information).
2. Connect the power window switch, and then close (roll up) the door glass.
  3. Access the tab stiffener and door latch lever.
    - Refer to Figure 1 below, and Figure 2 on the next page.

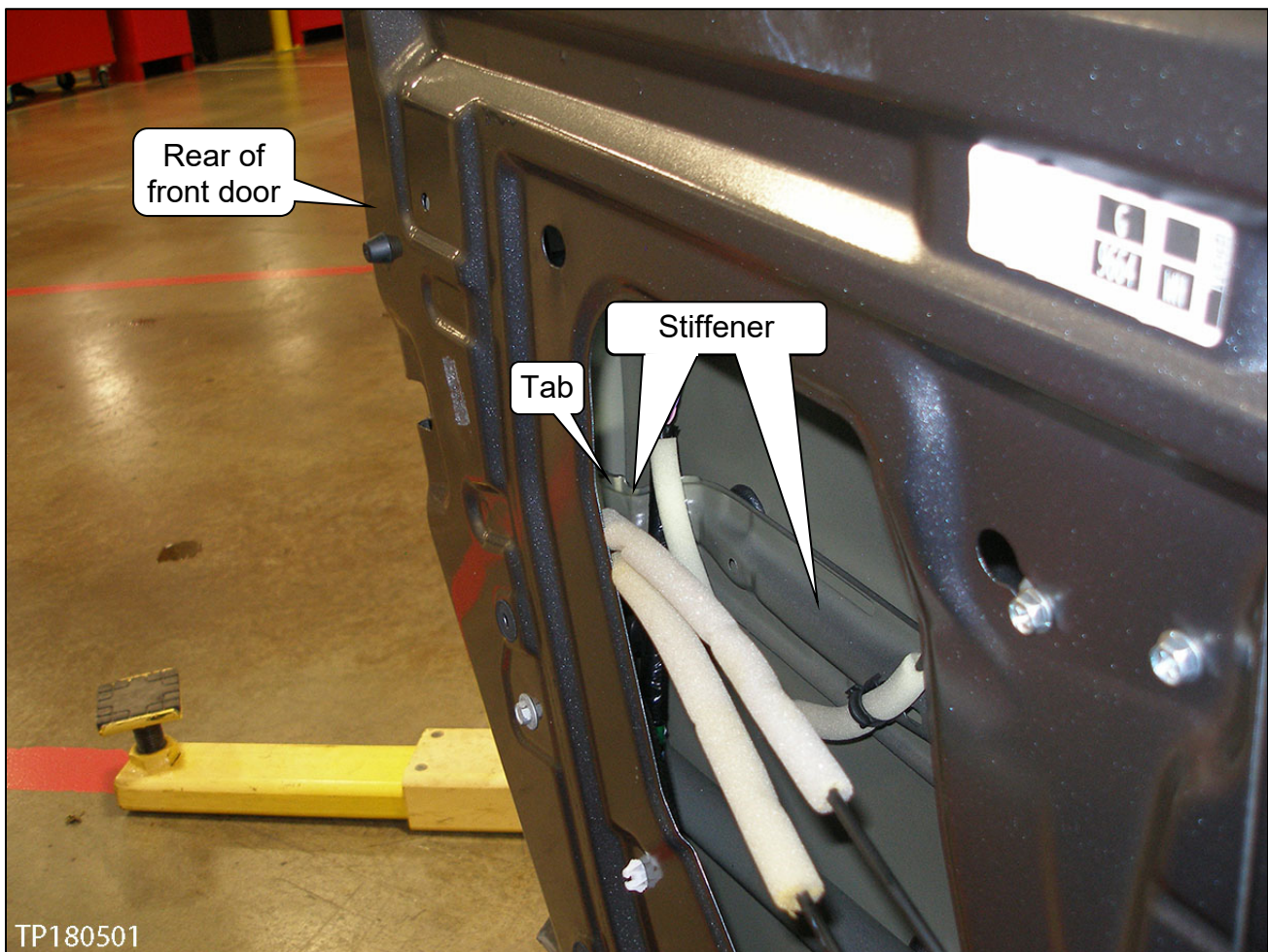


Figure 1

4. Move the lever on the door latch until it is level with the stiffener tab.

- Move the lever by raising the outside door handle.

**NOTE:** The door latch is hidden behind the door glass rubber run.

5. With the lever and stiffener tab still level with each other, inspect the gap between the latch lever and stiffener tab.

- Lever-to-door stiffener gap:

Minimum 3 mm (0.118 inch), maximum 5 mm (0.197 inch)

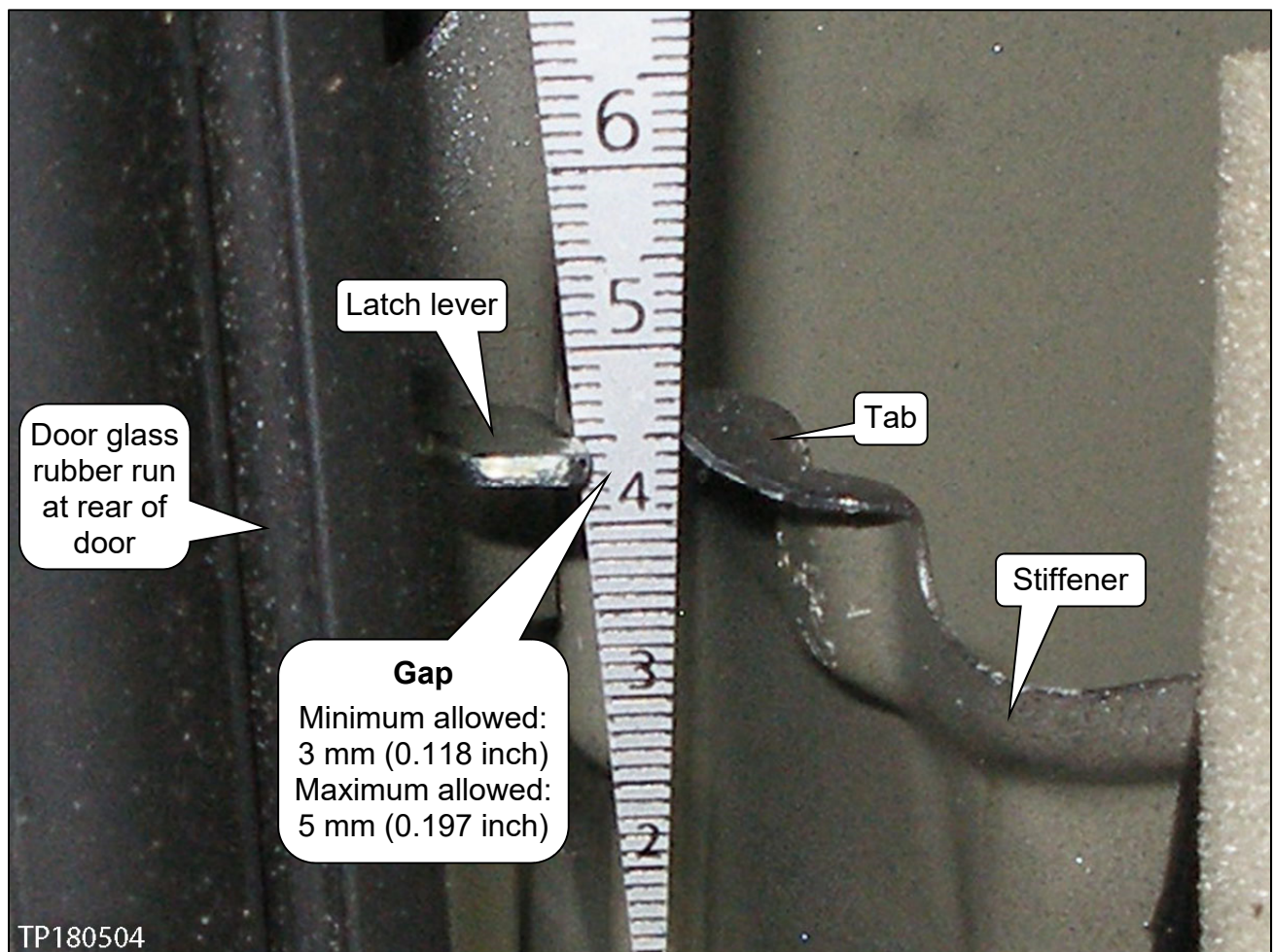


Figure 3

6. If the gap is not within specifications, adjust the stiffener tab to widen the gap.
- Using a suitable pair of pliers, adjust the gap by bending the stiffener tab horizontally along the dashed line (see Figure 4).
  - After adjusting the gap, adjust the tab as necessary to a level position (see Figure 4).
- CAUTION:** Do not adjust the gap by bending the stiffener tab up or down only.

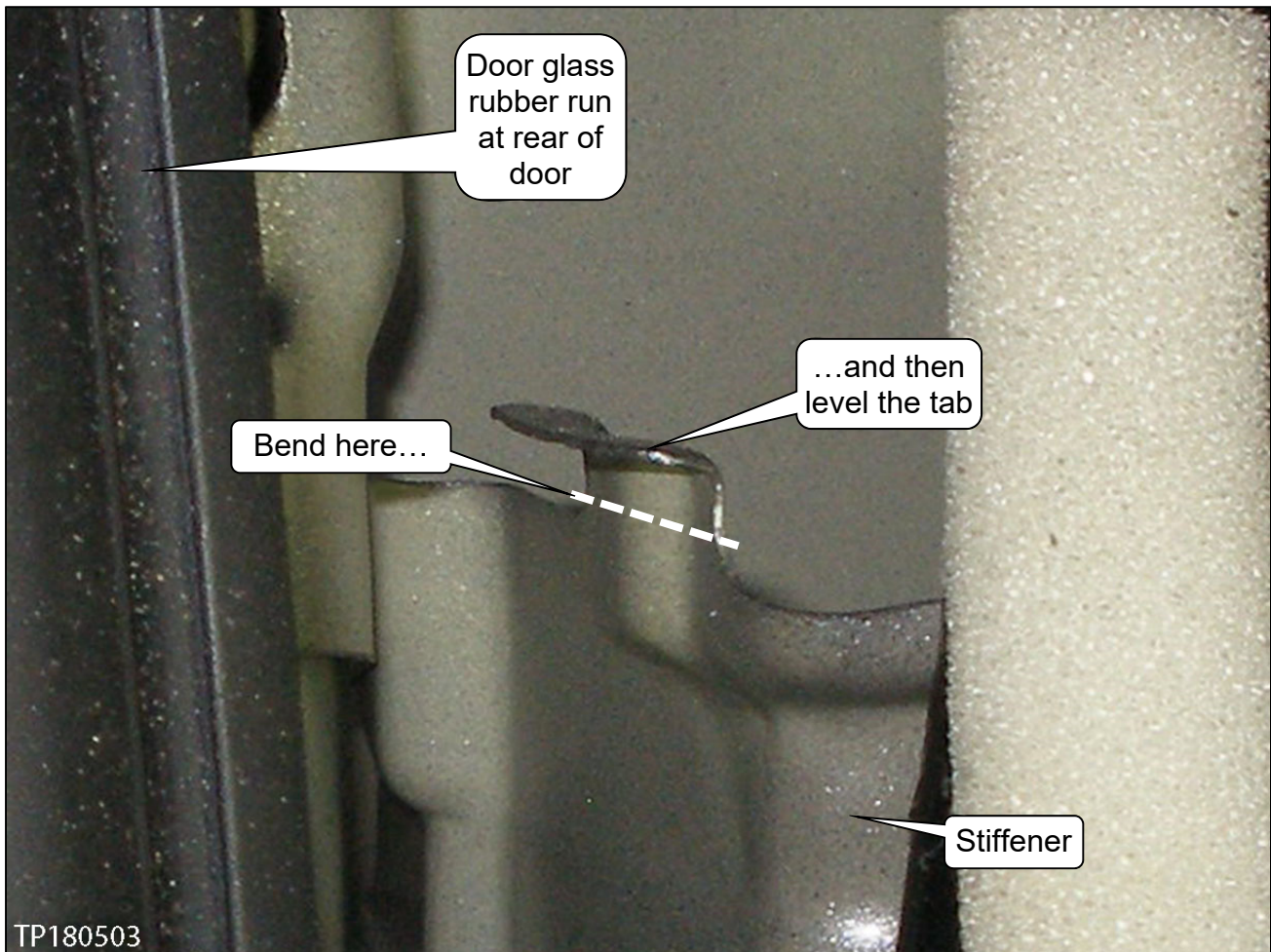


Figure 4

7. Install the front door finisher.
- Refer to the Electronic Service Manual (ESM), section BODY INTERIOR-INTERIOR-INTERIOR-REMOVAL AND INSTALLATION-FRONT DOOR FINISHER for front door finisher installation.

### CLAIMS INFORMATION

Submit a Primary Operation (PO) type line claim using the following claims coding:

DESCRIPTION	OP CODE	SYM	DIA	FRT
Adjust Latch Lever	(1)	ZE	32	0.3

(1) Refer to the electronic parts catalog and use the Front Door Lock Assy (80501-\*\*\*\*\*) as the Primary Failed Part.

(\*) Follow normal repair procedures for consequential damage if applicable.