



**Rick March, General Manager  
Customer Relations Group**

Greetings! Well as I write this article in late June Summer has just arrived. The weather has been terrific here in Ohio and hope you have all had a wonderful start to the season

This month I am going to discuss the steps you need to take to replace the fresh water tank drain valve. We get this question quite often as the connections for this valve are hidden under the chassis frame rail between the tires on most models.

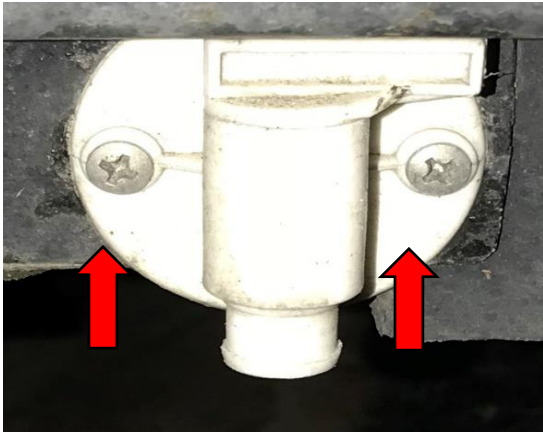
I appreciate all the feedback I have received. Keep it coming for future articles!!

## **Fresh Water Tank Drain Valve Replacement**

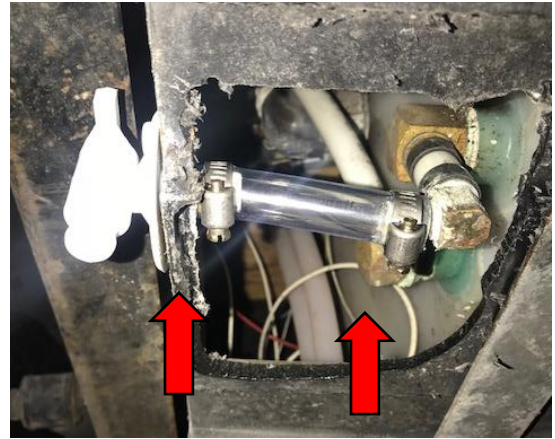


The tank drain valve is located between the two roadside tires on all dual axle models. Single axle models which house the fresh water tank on the interior will have not have this type of drain valve.

We have two different types of tank pans that house the fresh water tanks under the trailer. One is a plastic and the other is a galvanized pan. The repair procedure is the same regardless of which type of pan you have. Remove the two screws holding the plastic drain valve in place. In order to access the hose clamps which hold the tank drain and hose in place you will need to cut a 6 inch by 6 inch access hole in the bottom of the tank pan directly underneath the area where the plastic turn valve is located. Measure the area to cut and then use a larger drill bit to drill each corner for a pattern. Then use tin snips to cut the rest of your square area. Remember you have a ½ inch gap between the tank pan and the actual tank so if you are drilling starter holes to cut the access area use a drill stop on your drill bit so you cannot penetrate far enough to damage the tank itself. I have attached a picture here for demonstration.



Part Number 601243



You will have to loosen both hose clamps to pull the valve and hose through the side to replace as the hose clamps are too large to pull through the hole. Then as you reinstall the new valve you will have to slide the hose clamps back on the hose as you feed it back through the hole. Once you have access and the new valve installed test it to make sure you do not have any leak issues.

The next step will be to make a patch out of aluminum to cover the access area. I recommend you make this 1 inch bigger than the access hole you cut to ensure it covers all sides. This can be installed with ½ inch screws to hold it in place. You can also add sealer around the exterior of the patch to keep road debris and water from seeping in to the pan. I have a picture below of the patch after it is installed.



I would love to hear from you and if you have a suggestion or topic you would like to see covered in a future article, or have a question just drop me a line at [rmarch@airstream.com](mailto:rmarch@airstream.com) .

Have a great month!

Rick March