



---

# SERVICE CAMPAIGN BULLETIN

---

Reference:

NTB18-044

Date:

June 19, 2018

---

## VOLUNTARY EMISSIONS SERVICE CAMPAIGN 2018 SENTRA SR AND NISMO; ECM REPROGRAMMING

**CAMPAIGN ID #:** R1805  
**APPLIED VEHICLES:** 2018 Sentra SR (B17)  
2018 Sentra Nismo (B17)

**Check Service COMM or Dealer Business Systems (DBS)  
National Service History to confirm campaign eligibility.**

### INTRODUCTION

Nissan is conducting this voluntary emissions service campaign on certain specific model year 2018 Sentra Turbo SR and Sentra NISMO vehicles. The Engine Control Module (ECM) will be reprogrammed so that in the event of an engine coolant bypass (Multiway coolant flow Control Valve or MCV) diagnostic issue that properly illuminates a Malfunction Indicator Light (MIL), the software can also accurately determine when the issue has been corrected. This service will be performed at no charge to the customer for parts or labor.

### IDENTIFICATION NUMBER

Nissan has assigned identification number R1805 to this campaign. This number must appear on all communication and documentation of any nature dealing with this campaign.

### DEALER RESPONSIBILITY

Dealers are to repair vehicles falling within range of this campaign that enter the service department. This includes vehicles purchased from private parties, vehicles presented by transient (tourists) owners, and vehicles in a dealer's inventory.

Nissan Bulletins are intended for use by qualified technicians, not 'do-it-yourselfers'. Qualified technicians are properly trained individuals who have the equipment, tools, safety instruction, and know-how to do a job properly and safely. NOTE: If you believe that a described condition may apply to a particular vehicle, DO NOT assume that it does. See your Nissan dealer to determine if this applies to your vehicle.

## SERVICE PROCEDURE

### REPROGRAM THE ECM

#### IMPORTANT: Before starting, make sure:

- ASIST on the CONSULT PC has been synchronized (updated) to the current date.
- All CONSULT-III plus (C-III plus) software updates (if any) have been installed.
- The CONSULT PC is connected to the Internet (Wi-Fi or cable).

#### NOTE:

- Most instructions for reprogramming with CONSULT-III plus (C-III plus) are displayed on the CONSULT PC screen.
- If you are not familiar with the reprogramming procedure, [click here](#). This will link you to the "CONSULT- III plus (C-III plus) ECM Reprogramming" general procedure.
- Take the vehicle for a 10 minute drive in order to meet the following Idle Air Volume Learn (IAVL) conditions:
  - Engine coolant temperature: 70 -100°C (158 -212°F)
  - Battery voltage: More than 12.9V (At idle)
  - Transmission: Warmed up
- After reprogramming is complete, you will be required to perform Throttle Valve Closed Position, Idle Air Volume Learn, Accelerator Closed Position, and DTC erase.



Figure A

#### CAUTION:

- Connect the GR8 to the 12V battery and select **ECM Power Supply Mode**. If the vehicle battery voltage goes below 12.0V or above 15.5V during reprogramming, the ECM may be damaged.
- Be sure to turn OFF all vehicle electrical loads. If a vehicle electrical load remains ON, the ECM may be damaged.
- Be sure to connect the AC Adapter. If the CONSULT PC battery voltage drops during reprogramming, the process will be interrupted and the ECM may be damaged.
- Turn OFF all external Bluetooth® devices (e.g., cell phones, printers, etc.) within range of the CONSULT PC and the VI. If Bluetooth® signal waves are within range of the CONSULT PC during reprogramming, reprogramming may be interrupted and the ECM may be damaged.

1. For unsold vehicles, make sure storage switch is pushed IN.

- a. Turn the ignition OFF.
- b. Open the driver door and leave it open.
- c. Locate the interior fuse panel and remove the cover.
- d. Push the extended storage switch IN.

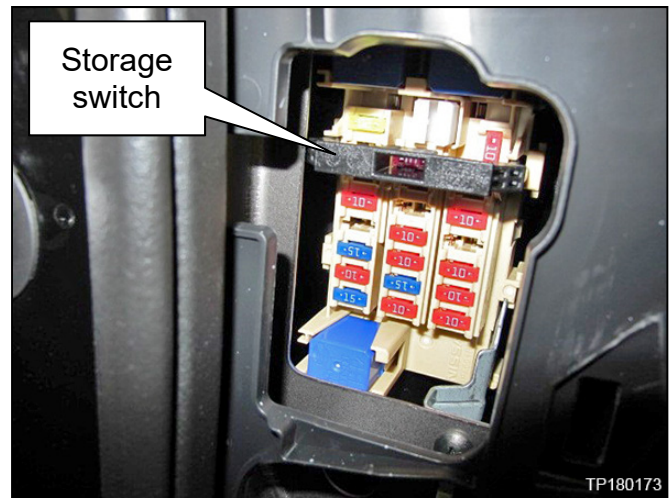


Figure B

- e. Wait at least 2 seconds and then turn the ignition ON.
- f. Make sure the extended storage warning message is not displayed in the combination meter/display.

2. Connect the GR8 to the 12V battery and select **ECM Power Supply Mode**.

**NOTE:** The engine cooling fans may turn ON during the reprogramming process.

3. Connect the CONSULT PC to the vehicle to begin the reprogramming procedure.

4. Start C-III plus.
5. Wait for the plus VI to be recognized / connected.
  - The serial number will display when the plus VI is recognized / connected.
6. Select **Re/programming, Configuration**.

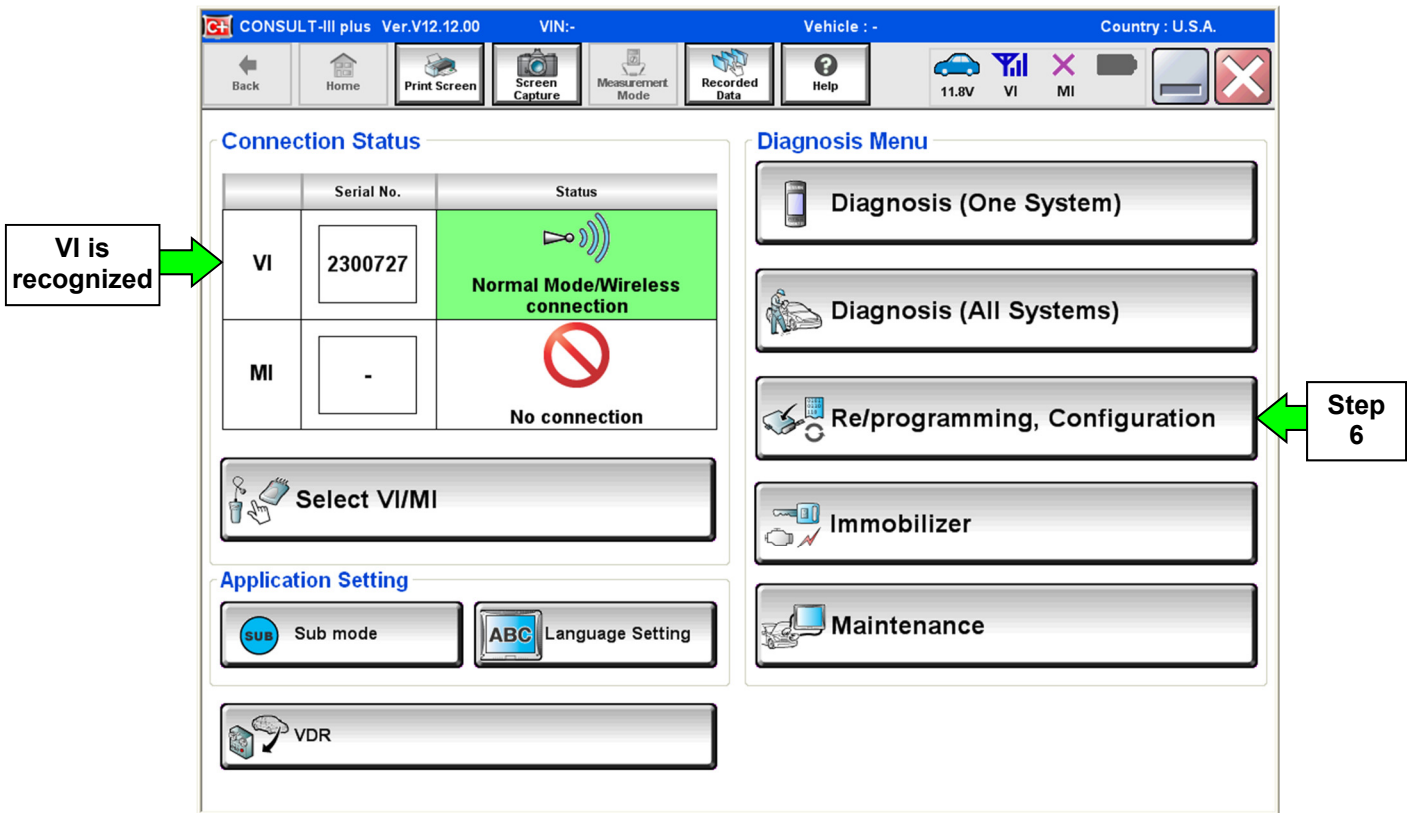


Figure 1

7. Follow the on-screen instructions and navigate the C-III plus to the screen shown in Figure 2 on the next page.

8. When you get to the screen shown in Figure 2, confirm this bulletin applies as follows.

A. Find the ECM **Part Number** and write it on the repair order.

**NOTE:** This is the current ECM Part Number (P/N).

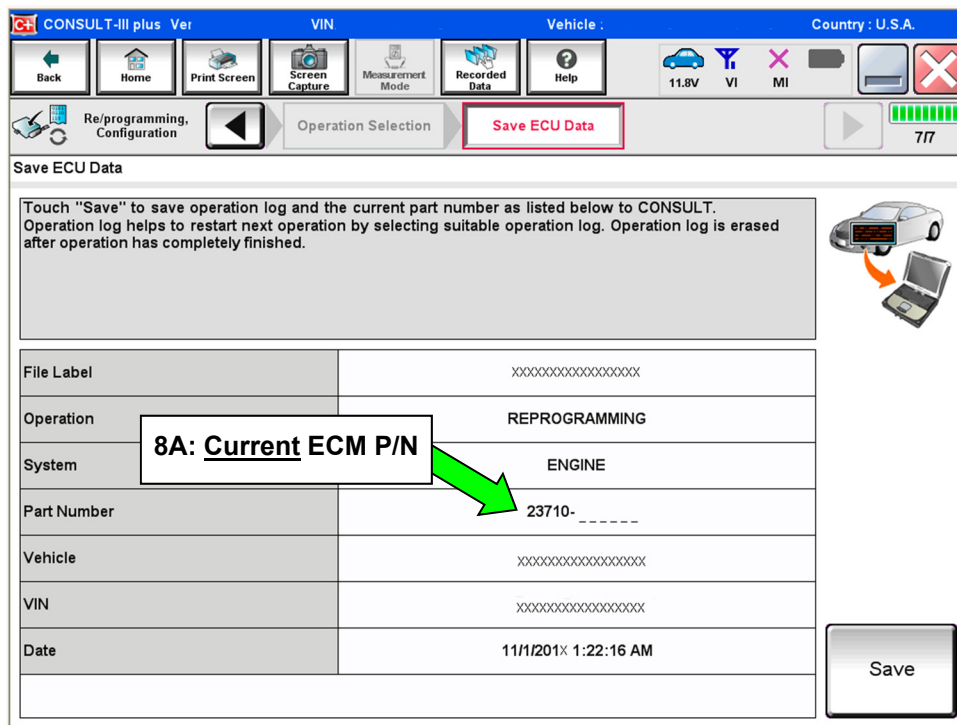


Figure 2

B. Compare the P/N you wrote down to the numbers in the **Current ECM Part Number** column in **Table A**, below.

- If there is a match, this bulletin applies. Continue with the reprogramming procedure.
- If there is not a match, reprogramming is not needed or it has already been done. Refer to Service COMM to confirm this campaign applies to the vehicle you are working on.

**Table A**

MODEL	CURRENT ECM PART NUMBER: 23710-
2018 Sentra SR or Nismo	3RP0A, 3RP1A, 3RP2A, 3RP3A

9. Follow the on-screen instructions to navigate C-III plus and reprogram the ECM.

**NOTE:**

- In some cases, more than one new P/N for reprogramming is available.
  - In this case, the screen in Figure 3 displays.
  - Select and use the reprogramming option that **does not** have the message “Caution! Use ONLY with NTBXX-XXX”.
- If you get this screen and it is blank (no reprogramming listed), it means there is no reprogramming available for this vehicle. Close C-III plus and refer back to ASIST for further diagnosis.

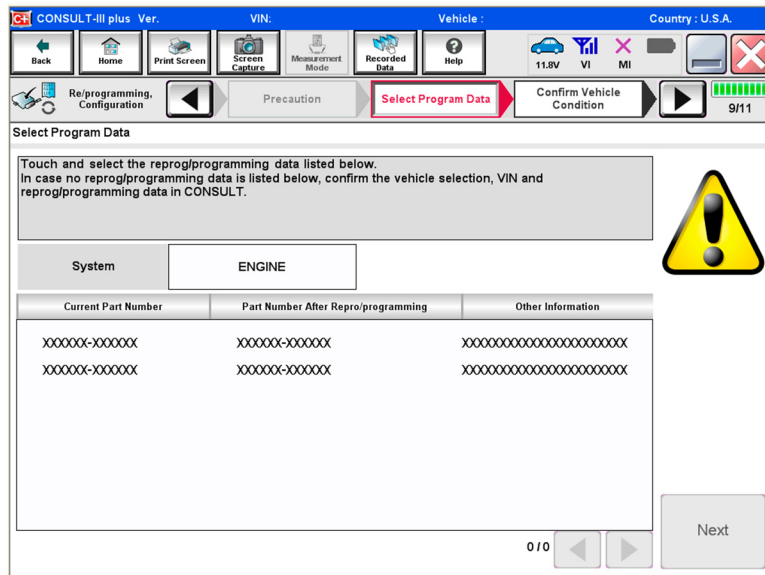


Figure 3

- Before reprogramming will start, you will be required to enter your User Name and Password.
  - The CONSULT PC must be connected to the Internet (Wi-Fi or cable).
  - If you do not know your User Name and Password, contact your Service Manager.

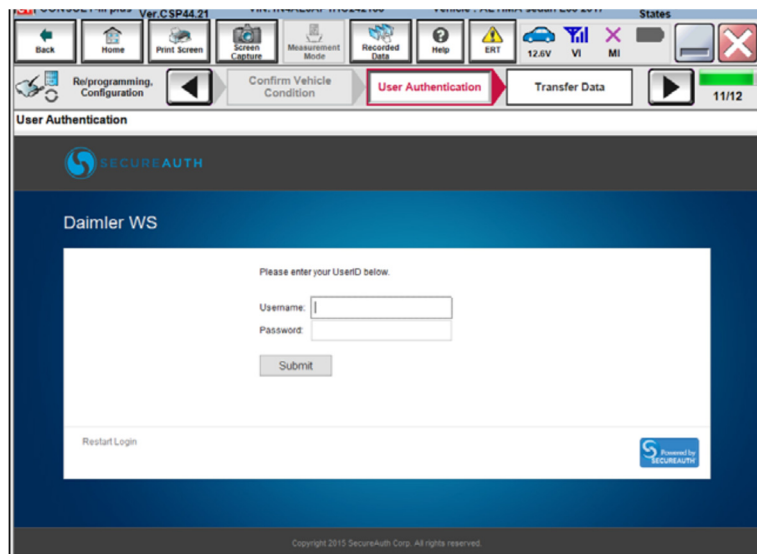


Figure 4

10. When the screen in Figure 5 displays, reprogramming is complete.

**NOTE:** If the screen in Figure 5 does not display (reprogramming does not complete), refer to the information on page 8.

11. Disconnect the battery charger from the vehicle.

12. Select **Next**.

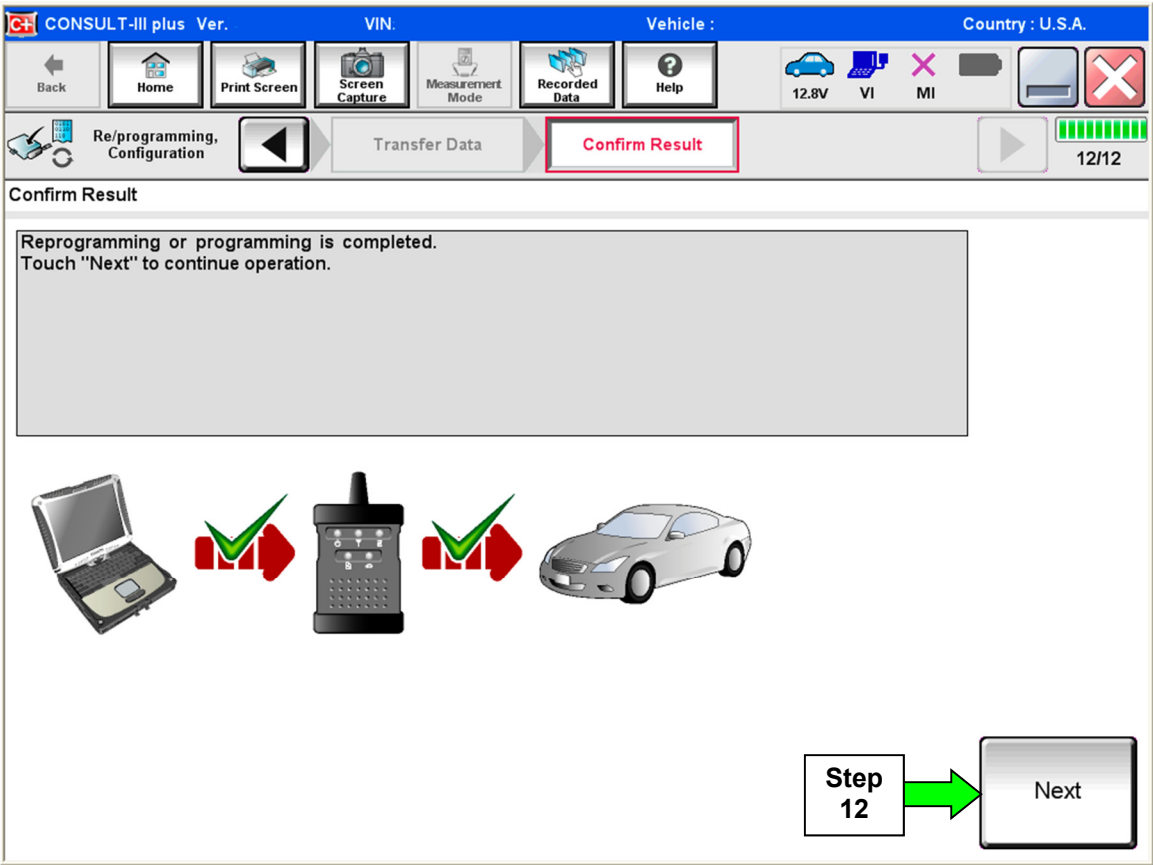


Figure 5

**NOTE:**

- In the next steps, starting on page 9, you will perform Throttle Valve Closed Position, Idle Air Volume Learn, Accelerator Closed Position, and DTC erase.
- These operations are required before C-III plus will provide the final reprogramming confirmation report.

## ECM recovery:

**Do not disconnect plus VI or shut down Consult III plus if reprogramming does not complete.**

If reprogramming does not complete and the “!?” icon displays as shown in Figure 6:

- Check battery voltage (12.0–15.5 V).
- Ignition is ON, engine OFF.
- External Bluetooth® devices are OFF.
- All electrical loads are OFF.
- **Select retry and follow the on screen instructions.**
- “Retry” may not go through on first attempt and can be selected more than once.

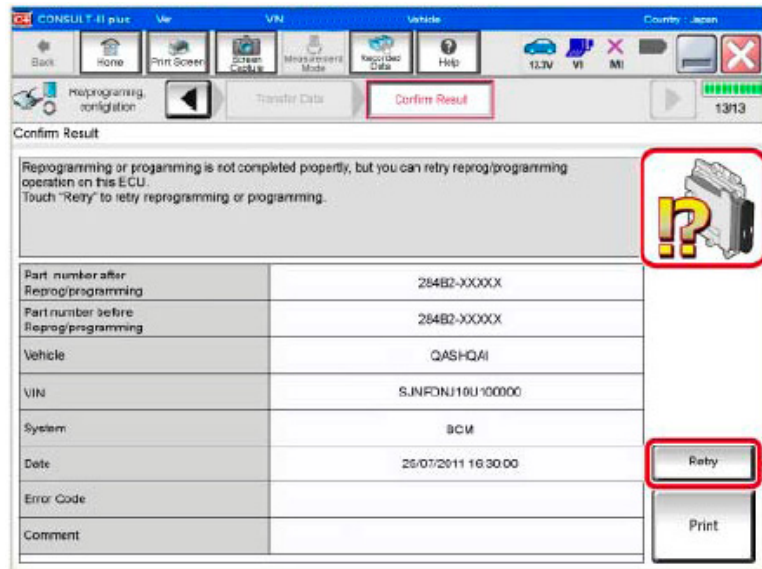


Figure 6

If reprogramming does not complete and the “X” icon displays as shown in Figure 7:

- Check battery voltage (12.0 – 15.5 V).
- CONSULT A/C adapter is plugged in.
- Ignition is ON, engine OFF.
- Transmission is in Park.
- All C-III plus / VI cables are securely connected.
- All C-III plus updates are installed.
- **Select Home, and restart the reprogram procedure from the beginning.**

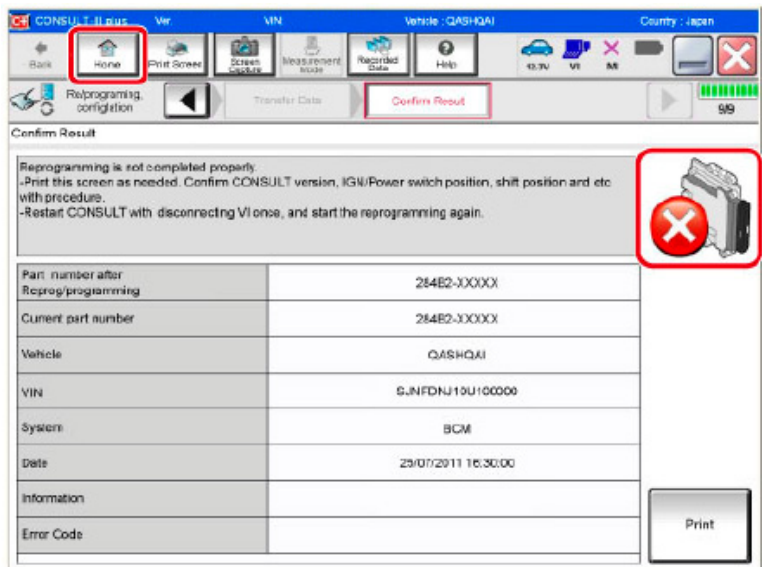


Figure 7



13. Follow the on-screen instructions to perform the following:

- **Throttle Valve Closed Position**
- **Idle Air Volume Learn (IAVL)**

**NOTE:**

- **Listed below are common conditions required for IAVL to complete.**
  - **If IAVL does not complete within a few minutes, a condition may be out of range.**
  - **Refer to the appropriate ESM for specific conditions required for the vehicle you are working on.**
    - Engine coolant temperature: 70 -100° C (158 -212°F)
    - Battery voltage: More than 12.9V (At idle)
    - Selector lever: P or N
    - Electric load switch: OFF (Air conditioner, headlamp, rear window defogger)
    - Steering wheel: Neutral (Straight-ahead position)
    - Vehicle speed: Stopped
    - Transmission: Warmed up
- 
- **Accelerator Pedal Close Position Learning**
  - **Erase DTCs**

Continue to the next page.

14. When the entire reprogramming process is complete, the screen in Figure 8 will display.

15. Verify the before and after part numbers are different.

16. Print a copy of this screen (Figure 8) and attach it to the repair order for warranty documentation.

17. Select **Confirm**.

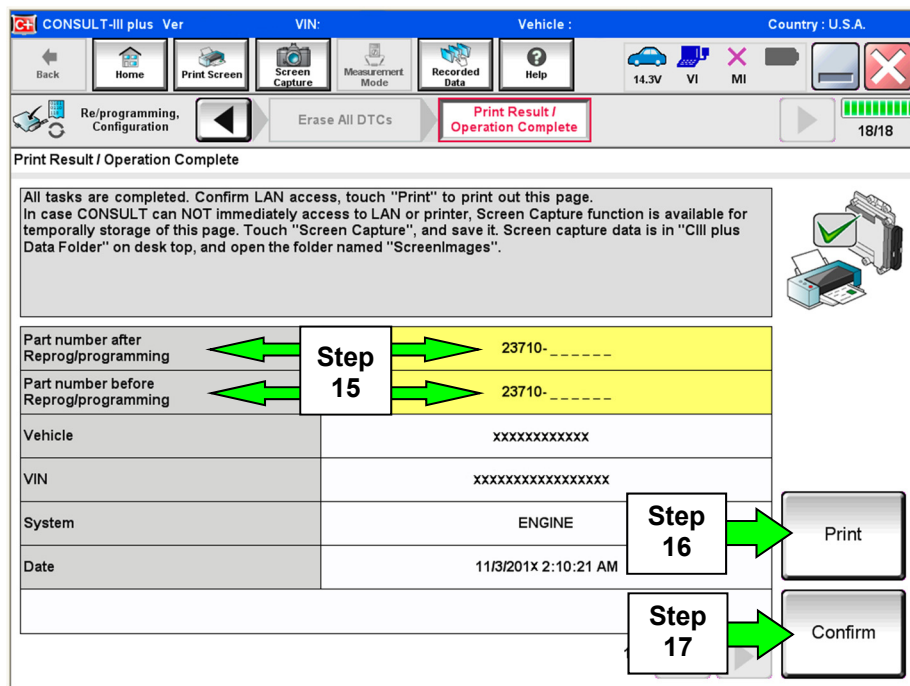


Figure 8

18. Close C-III plus.

19. Turn the ignition OFF.

20. Disconnect the plus VI from the vehicle.

21. If vehicle is unsold, pull OUT the storage switch to place vehicle back into storage mode.

22. Reinstall the interior fuse panel cover if previously removed.

## CLAIMS INFORMATION

Submit a campaign (CM) line claim using the following claims coding:

CAMPAIGN ("CM") ID	DESCRIPTION	OP CODE	FRT
R1805	Reprogram ECM	R18050	0.4 hrs.
	Does Not Require Reprogram	R18051	0.3 hrs.

