

Fresh/Recirculation Servo Actuator Separation

Service Category Vehicle Interior

Section Heating/Air Conditioning

Market USA

Lexus Supports
ASE Certification 

Applicability

YEAR(S)	MODEL(S)	ADDITIONAL INFORMATION
2016 - 2018	RX350, RX450H	

Introduction

Some 2016 – 2018 model year RX 350 and RX 450h vehicles may exhibit decreased front windshield defroster performance at extremely low ambient temperatures. This condition may be the result of the fresh/recirculation servo actuator separating from the servo, causing the HVAC system to become stuck in recirculation. This condition does not affect the airflow of the defroster. Follow the Repair Procedure in this bulletin to address this condition.

Production Change Information

This bulletin applies to vehicles produced **BEFORE** the Production Change Effective VINs shown below.

MODEL	PLANT	DRIVETRAIN	PRODUCTION CHANGE EFFECTIVE VIN
RX350	TMMC	2WD	2T2ZZMCA#JC102669
		AWD	2T2BZMCA#JC149817
RX450h			

Fresh/Recirculation Servo Actuator Separation

Warranty Information

OP CODE	DESCRIPTION	MODEL	TIME	OFF	T1	T2
AC1802	Inspect and Reinstall Fresh/Recirculation Servo Motor Actuator	RX 350, RX 450h	0.6	87106-0E130	62	57
870551	Inspect and Replace Damper Servo Sub-Assembly	RX 350	6.0			
		RX 450h	6.2			

APPLICABLE WARRANTY

- This repair is covered under the Lexus Basic Warranty. This warranty is in effect for 48 months or 50,000 miles, whichever occurs first, from the vehicle's in-service date.
- Warranty application is limited to occurrence of the specified condition described in this bulletin.

Parts Information

PART NUMBER		PART NAME	QTY
PREVIOUS	NEW		
	87106-0E130	Servo Sub-assy, Damper	1

Required Tools & Equipment

REQUIRED EQUIPMENT	SUPPLIER	PART NUMBER	QTY
Techstream 2.0*	ADE	TS2UNIT	1
Techstream Lite		TSLITEPDLR01	
Techstream Lite (Green Cable)		TSLP2DLR01	

* Essential SST.

NOTE

- Only ONE of the Techstream units listed above is required.
- Software version 13.10.019 or later is required.
- Additional Techstream units may be ordered by calling Approved Dealer Equipment (ADE) at 1-800-368-6787.

SPECIAL SERVICE TOOLS (SST)	PART NUMBER	QTY
Plastic Pry Tool Kit*	00002-06020-02	1

NOTE

Additional SSTs may be ordered by calling 1-800-933-8335.

Fresh/Recirculation Servo Actuator Separation

Repair Procedure

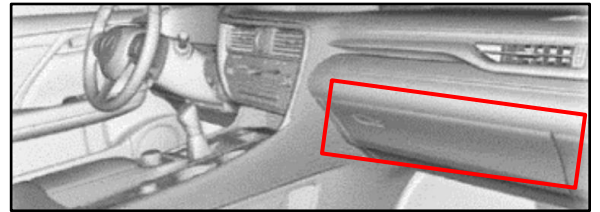
1. Confirm the condition exists.
 - A. Does the vehicle exhibit decreased front windshield defroster performance at extremely low ambient temperatures?
 - **YES** — Continue to substep B.
 - **NO** — This bulletin does NOT apply. Continue diagnosis using the applicable Repair Manual.

- B. Remove the glove compartment door assembly.

Refer to TIS, applicable model and model year Repair Manual:

- [2016](#) / [2017](#) / [2018](#) RX 350:
Vehicle Interior – Interior Panels/Trim – “Interior Panels / Trim: Instrument Panel Safety Pad: Removal”
- [2016](#) / [2017](#) / 2018 ([12/2017 – 03/2018](#)) / ([03/2018 –](#)) RX 450h:
Vehicle Interior – Interior Panels/Trim – “Interior Panels / Trim: Instrument Panel Safety Pad: Removal”

Figure 1.



- C. Check the fresh/recirculation servo motor actuator.

Is the actuator separated from the blower assembly?

- **YES** — Continue to step 2.
- **NO** — This bulletin does NOT apply. Continue diagnosis using the applicable Repair Manual.

Figure 2. Actuator Installed



Fresh/Recirculation Servo Actuator Separation

Repair Procedure (continued)

2. Check for the servo motor actuator on the passenger kick plate or in the passenger side foot well.

Is the servo motor actuator present?

- **YES** — Continue to step 3.
- **NO** — Go to step 4.

Figure 3.

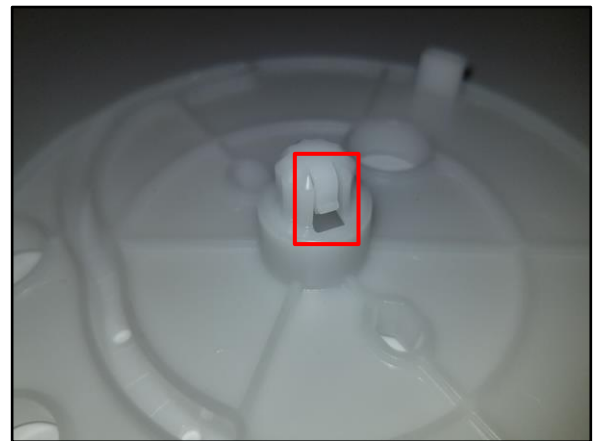


3. Inspect the servo motor actuator for ANY damage, specifically the locking tab.

Is ANY damage present?

- **YES** — Continue to step 4.
- **NO** — Go to step 5.

Figure 4.



Fresh/Recirculation Servo Actuator Separation

Repair Procedure (continued)

4. Install a NEW damper servo sub-assy.

NOTE

Installation of a NEW damper servo sub-assy is ONLY required if the servo motor actuator is missing or damaged

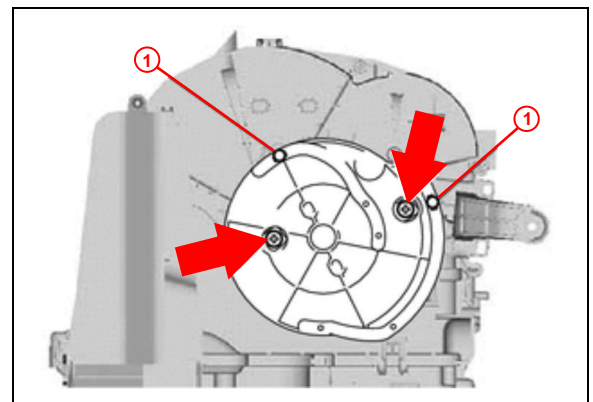
Refer to TIS, applicable model and model year Repair Manual:

- [2016](#) / [2017](#) / [2018](#) RX 350:
Vehicle Interior – Heating/Air Conditioning – “Heating / Air Conditioning: Blower Unit: Reassembly”
- [2016](#) / [2017](#) / [2018](#) RX 450h:
Vehicle Interior – Heating/Air Conditioning – “Heating / Air Conditioning: Blower Unit: Reassembly”

5. Reinstall the servo motor actuator.

With two links of the blower assembly in the appropriate channels (as shown), install the servo motor actuator to the servo motor until a click is heard.

Figure 5.



1	Link
----------	-------------

6. Confirm operation of the fresh/recirculation servo motor actuator.

Cycle through fresh and recirculation modes with the glove compartment removed to observe the actuator cycling.

7. Reinstall the glove compartment door assembly.

Refer to TIS, applicable model and model year Repair Manual:

- [2016](#) / [2017](#) / [2018](#) RX 350:
Vehicle Interior – Interior Panels/Trim – “Interior Panels / Trim: Instrument Panel Safety Pad: Installation”
- [2016](#) / [2017](#) / [2018 \(12/2017 – 03/2018\)](#) / [\(03/2018 – \)](#) RX 450h:
Vehicle Interior – Interior Panels/Trim – “Interior Panels / Trim: Instrument Panel Safety Pad: Installation”