

Water Entry on RH Front Floor Area

Service Category Vehicle Exterior

Section Body Structure

Market USA

Toyota Supports
 ASE Certification 

Applicability

YEAR(S)	MODEL(S)	ADDITIONAL INFORMATION
2018	Camry, Camry HV	

Introduction

Some 2018 model year Camry and Camry plug-in hybrid vehicles may exhibit a condition where there is a musty odor or wetness in the RH front floor area of the cabin. This condition may be caused by water entry on the RH front side of the vehicle. Follow the procedure in this bulletin to address this condition.

Production Change Information

This bulletin applies to vehicles produced **BEFORE** the Production Change Effective VINs shown below.

MODEL	PLANT	ENGINE	PRODUCTION CHANGE EFFECTIVE VIN
Camry	TMMK Line 2	4 Cylinder	4T1B11HK#JU569350
		6 Cylinder	4T1BZ1HK#JU505030
Camry HV		4 Cylinder	4T1B21HK#JU504293

Warranty Information

OP CODE	DESCRIPTION	TIME	OPF	T1	T2
BD1806	Cowl Seal Repair (Repair A)	0.6	55701-06350	66	38
BD1807	Apron Seal Repair (Repair B)	1.0	53701-06260		
BD1808	Cowl and Apron Seal Repair (Repair A and B)	1.6	55701-06350 53701-06260		

APPLICABLE WARRANTY

- This repair is covered under the Toyota Basic Warranty. This warranty is in effect for 36 months or 36,000 miles, whichever occurs first, from the vehicle's in-service date.
- Warranty application is limited to occurrence of the specified condition described in this bulletin.

Water Entry on RH Front Floor Area

Required Tools & Equipment

REQUIRED EQUIPMENT	SUPPLIER	PART NUMBER	QTY
Techstream 2.0*	ADE	TS2UNIT	1
Techstream Lite		TSLITEPDLR01	
Techstream Lite (Green Cable)		TSLP2DLR01	

*Essential SST.

NOTE

- Only ONE of the Techstream units listed above is required.
- Software version 13.10.019 or later is required.
- Additional Techstream units may be ordered by calling Approved Dealer Equipment (ADE) at 1-800-368-6787.

REQUIRED TOOLS & MATERIAL	QUANTITY
Caulk Gun	1*
Weld Rod (Attachment for Flexible Hose)	1*
3M™ Flexiclear™ Body Seam Sealer 08405	1*
Nylon Pry Bar	1**
Borescope	1***
Flexible Hose	1***
Paint Brush (Acid Brush)	1***
Flat Head Screwdriver	1***

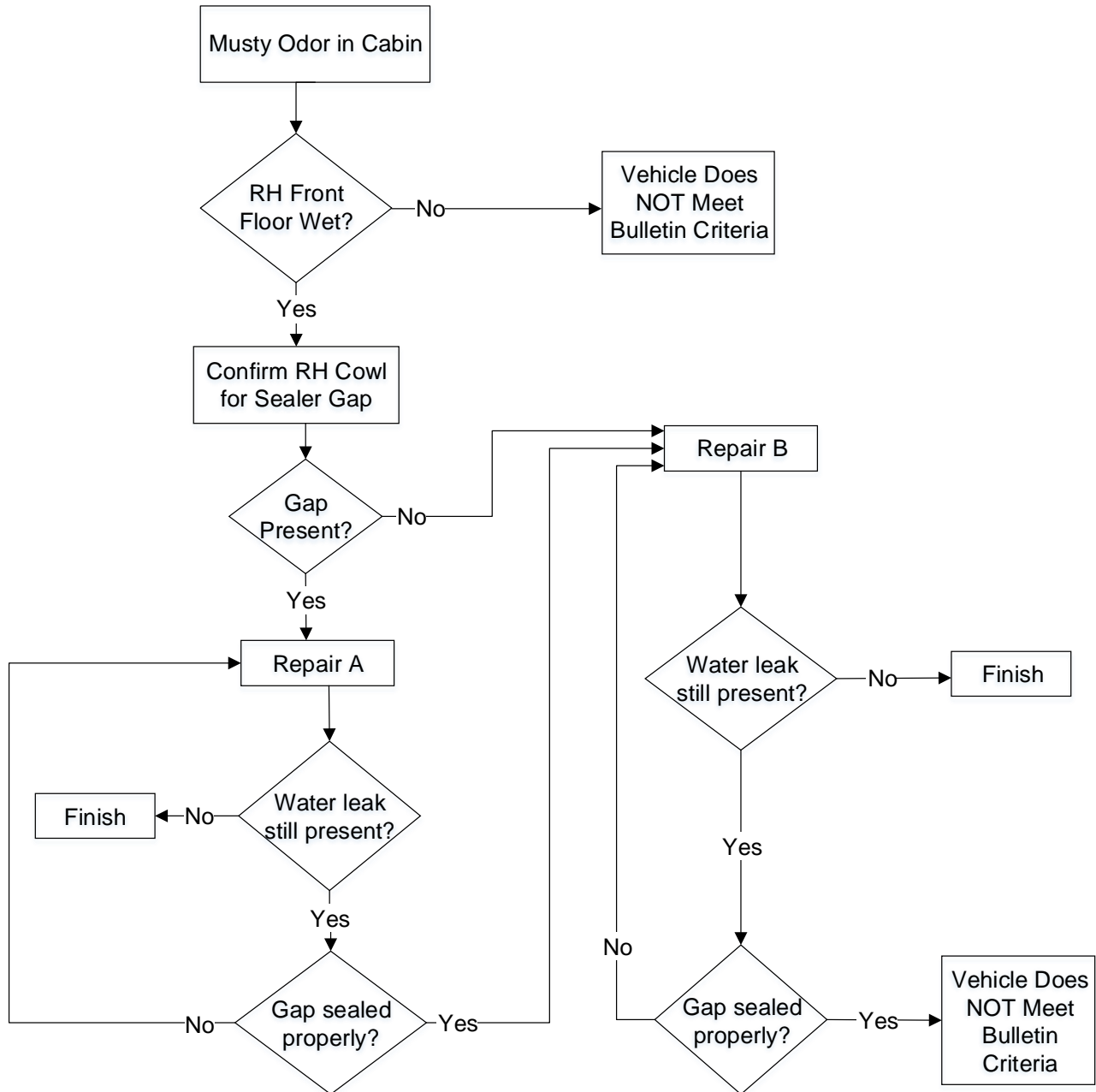
*Required for Repair A and B.

**Required for Repair A.

***Required for Repair B.

Water Entry on RH Front Floor Area

Repair Procedure Overview



Water Entry on RH Front Floor Area

Sealer Verification Procedure

Cowl Sealer

Confirm missing or misapplied body sealer on the RH side of the engine compartment near the hood hinge (cowl side to member overlap/seam).

Figure 1.

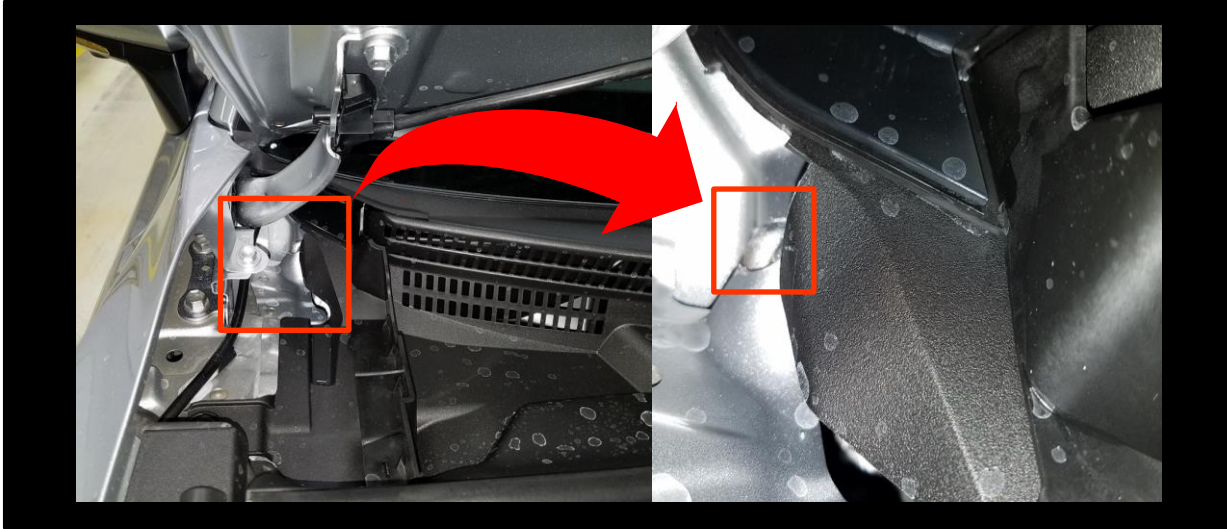
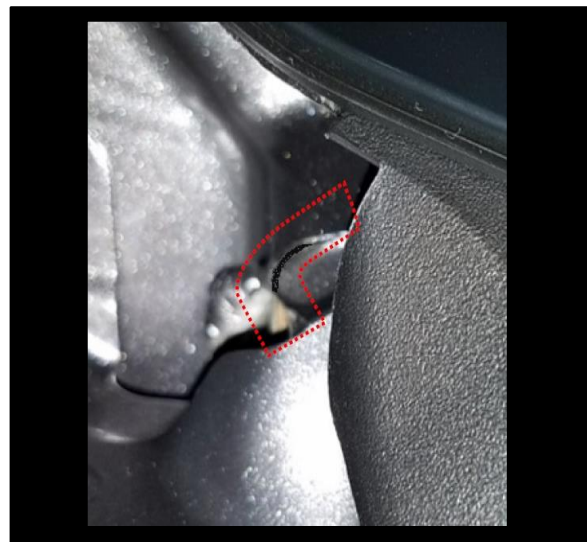


Figure 2. Body Sealer Applied Correctly on the Seam (Sealer Present Past Radius/No Gaps)



Figure 3. Body Sealer Does Not Cover the Seam



Water Entry on RH Front Floor Area

Repair Procedure

1. Confirm the condition exists.
Is there musty odor or wetness in the RH front floor area of the cabin?
 - **YES** — Continue to step 2.
 - **NO** — This bulletin does NOT apply. Continue diagnosis using the applicable Repair Manual.

2. Inspect the RH cowl sealer for a gap.
Is a gap present?
 - **YES** — Proceed to Repair A.
 - **NO** — Continue to step 3.

3. Complete Repair B.
Is the water leak no longer present?
 - **YES** — The repair is complete.
 - **NO** — This bulletin does NOT apply. Continue diagnosis using the applicable Repair Manual.

Repair A – Cowl Sealer

1. Prepare the area for repair with a clean, white cloth.
Wipe dirt, oil, and debris from the area.

2. Place a bead of Flexiclear™ sealer on the nylon pry bar.

Figure 4.



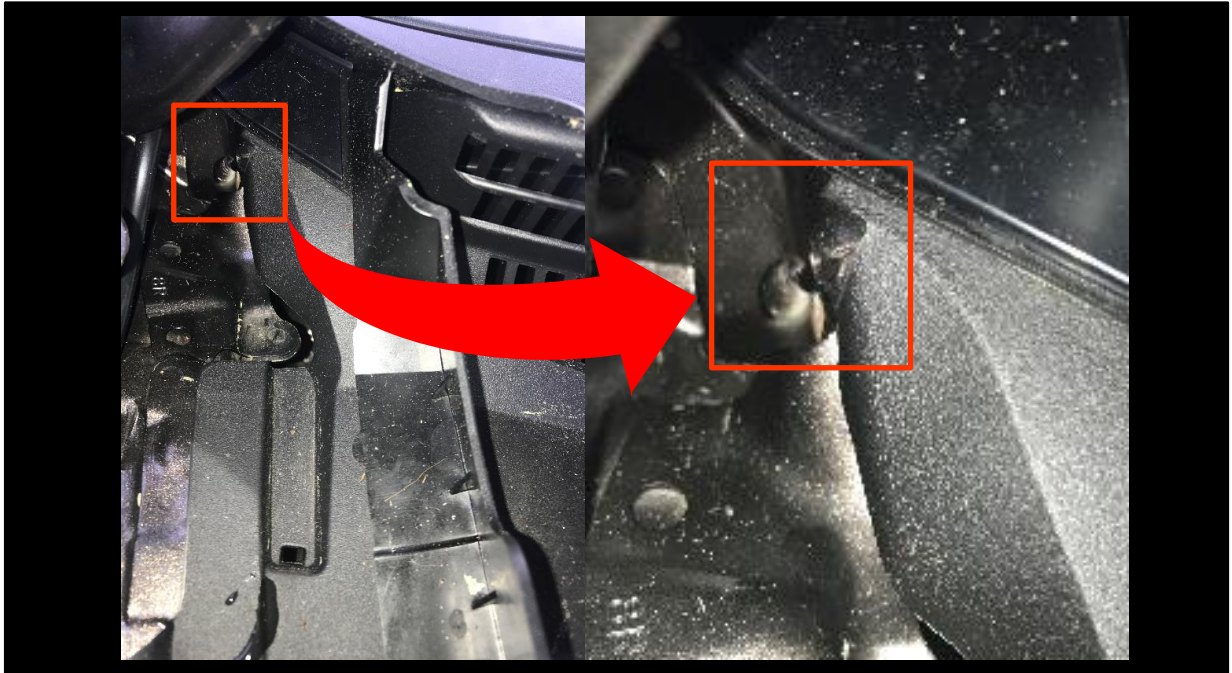
Water Entry on RH Front Floor Area

Repair Procedure (continued)

Repair A – Cowl Sealer (continued)

3. Fill the seam between the cowl and side member with sealer, wiping from the bottom panel to the top panel of the seam.
Ensure the sealer fills gap between panels and covers the area past the radius.

Figure 5.



4. Finish the sealer for appearance by lightly wiping the bead with a spatula to remove ANY excess sealer.
 - A. Make sure the sealer is inserted into the gap and NOT just brushed over seam.
 - B. Make sure coverage for the entire gap is past the radius of the side member.
 - C. Inspect the repaired sealer bead for appearance concerns (strings, ridges, gaps).
 - D. Confirm the leak no longer exists. If ANY concerns are found with the sealer, repeat the repair.

NOTE

Allow the sealer to cure based on the manufacturer's recommendation.

5. At ALL potential touch points, inspect the vehicle for mutilation or surface damage.

Water Entry on RH Front Floor Area

Repair Procedure (continued)

Repair A – Cowl Sealer (continued)

6. Is a water leak still present?
 - **YES** — Continue to step 7.
 - **NO** — The repair is complete.

7. Is the gap sealed properly?
 - **YES** — Continue to Repair B.
 - **NO** — Repeat Repair A.

Repair B – Apron Sealer

1. Completely pry open the bottom of the Flexiclear™ sealer.

Figure 6.



2. Insert the tube of Flexiclear™ sealer into the caulk gun.
3. Attach the flexible hose as shown.

Figure 7.



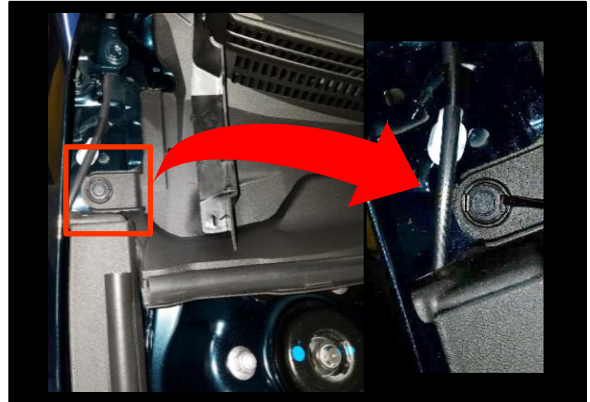
Water Entry on RH Front Floor Area

Repair Procedure (continued)

Repair B – Apron Sealer (continued)

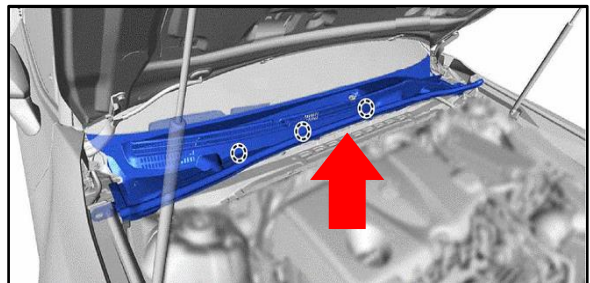
4. Locate the RH clip for the cowl ventilator louver sub-assembly.
5. Using a flathead screwdriver, pop the clip as shown.

Figure 8.



6. Using a flathead screwdriver, pop the three clips and lift the cowl ventilator louver sub-assembly.

Figure 9.



7. Prop up the cowl ventilator louver sub-assembly with an object such as masking tape.

NOTE

The cowl louver **MUST** be raised
AT LEAST 100 mm.

Figure 10.



Water Entry on RH Front Floor Area

Repair Procedure (continued)

Repair B – Apron Sealer (continued)

8. Insert the borescope into the hole shown.

Figure 11.



9. Insert the sealer applicator into the location shown.

Figure 12.



Figure 13.



Water Entry on RH Front Floor Area

Repair Procedure (continued)

Repair B – Apron Sealer (continued)

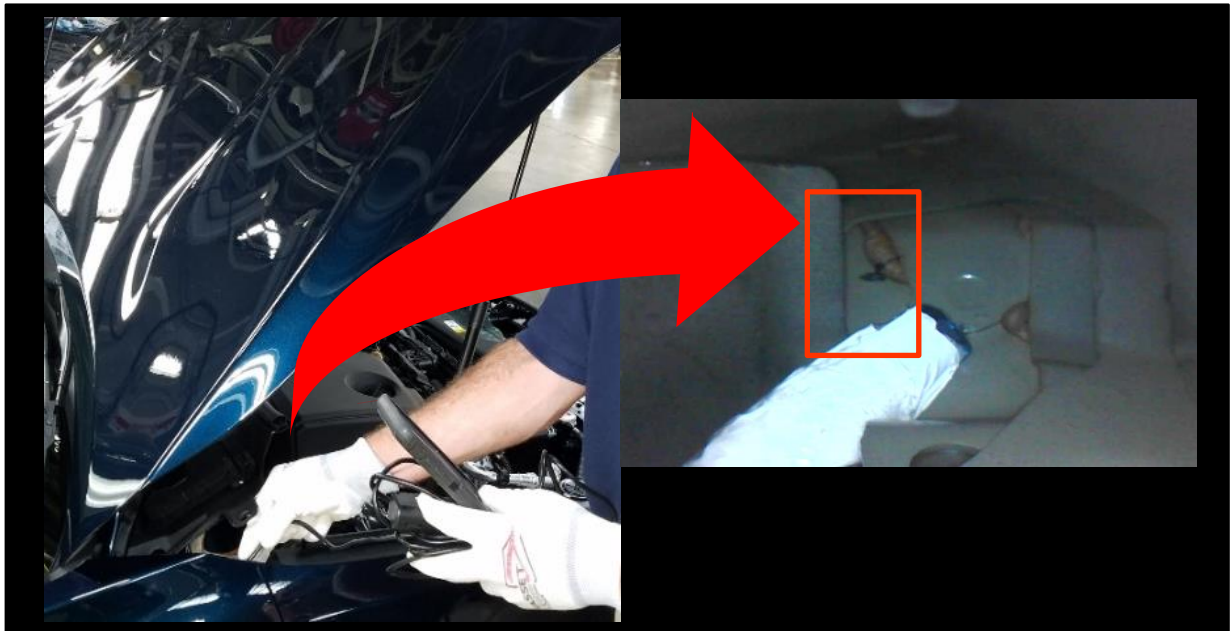
NOTE

Refer to the video link below for steps 10 – 13.

[Steps 10 – 13](#)

10. Set the borescope to show the area shown in Figure 14.
11. Adjust the sealer applicator using the borescope.
12. Apply the sealer by squeezing the gun until the sealer covers the seams shown in Figure 14.

Figure 14.



13. Using the brush, spread the sealer to completely cover the seam.

Figure 15.



Figure 16.



Water Entry on RH Front Floor Area

Repair Procedure (continued)

Repair B – Apron Sealer (continued)

14. Inspect the vehicle for mutilation or surface damage.

15. Is a water leak still present?
 - **YES** — Continue to step 16.
 - **NO** — Reassemble the cowl ventilator louver sub-assembly to complete the repair.

16. Is the gap sealed properly?
 - **YES** — This bulletin does NOT apply. Continue diagnosis using the applicable Repair Manual.
 - **NO** — Repeat Repair B in this bulletin.