

- ATTENTION:**
- GENERAL MANAGER
 - PARTS MANAGER
 - CLAIMS PERSONNEL
 - SERVICE MANAGER

IMPORTANT - All Service Personnel Should Read and Initial in the boxes provided, right.

© 2018 Subaru of America, Inc. All rights reserved.



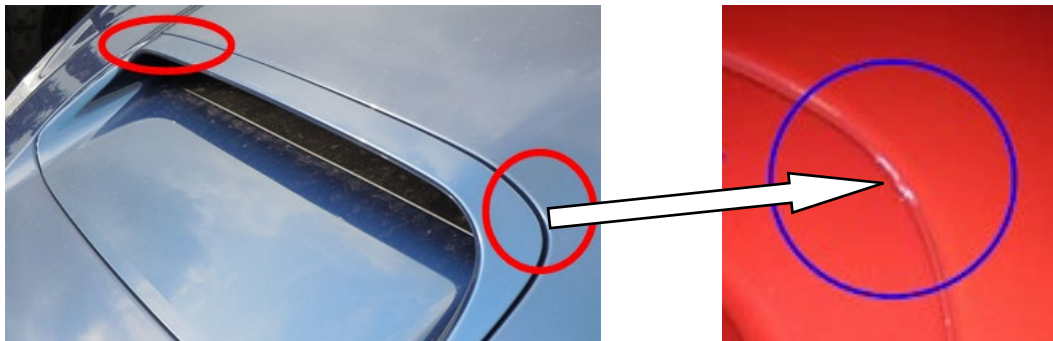
QUALITY DRIVEN® SERVICE

SERVICE BULLETIN

APPLICABILITY: 2015-2018MY WRX and WRX STI Models **NUMBER:** 12-243-18
SUBJECT: Paint Chipping between Hood Grille (Scoop) and Hood **DATE:** 06/06/18

INTRODUCTION:

This bulletin replaces TSB **12-201-16R** and provides a new repair procedure to address customer concerns of the hood scoop scrubbing the finish of the hood panel in the areas shown in the photo below. Due to different expansion rates between the metal hood panel and the resin material used for the hood scoop, the edges of the scoop's rear corners may come in contact with the hood panel and abrade the finish.



The procedure involves installation of a new hood scoop assembly which includes re-designed Sealer Tapes to eliminate contact between the scoop and hood panel.

PRODUCTION CHANGE INFORMATION:

The new Hood Grille (scoop) p.n. 90829VA010NN (which **includes** the new Sealer Tapes) was incorporated into production starting with **VIN: J*817519**.

PART INFORMATION:

Description	Part Number
GRILLE HOOD F ASSEMBLY	90829VA010NN

Continued...

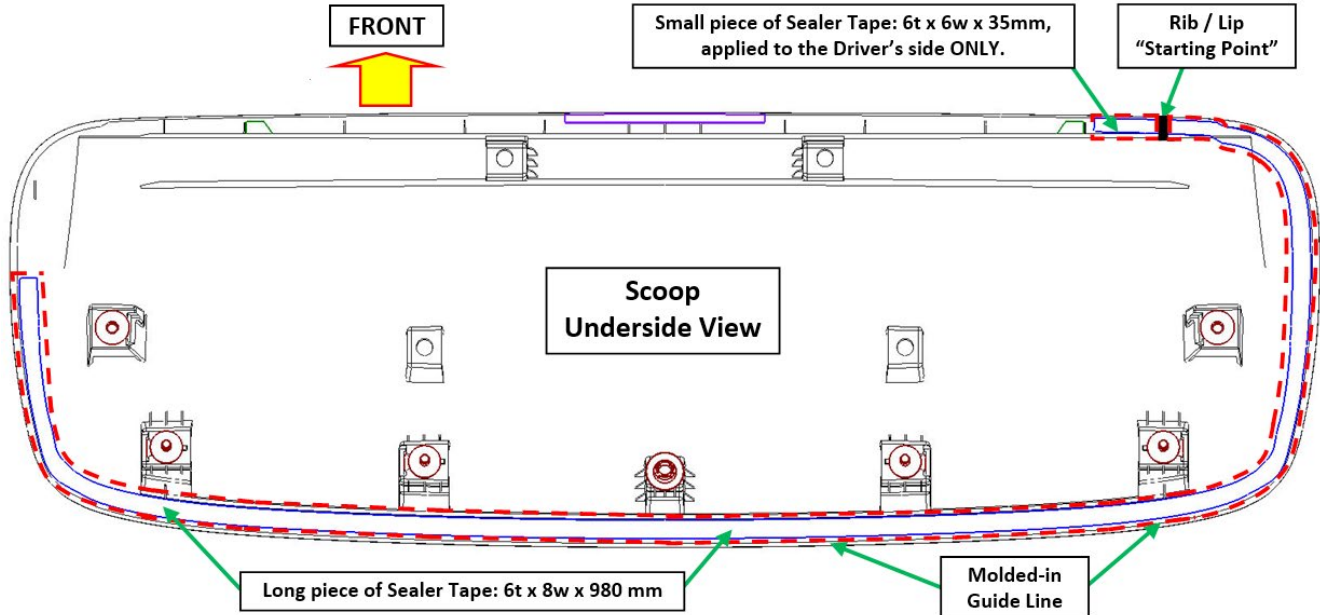
<p>CAUTION: VEHICLE SERVICING PERFORMED BY UNTRAINED PERSONS COULD RESULT IN SERIOUS INJURY TO THOSE PERSONS OR TO OTHERS.</p> <p>Subaru Service Bulletins are intended for use by professional technicians ONLY. They are written to inform those technicians of conditions that may occur in some vehicles, or to provide information that could assist in the proper servicing of the vehicle. Properly trained technicians have the equipment, tools, safety instructions, and know-how to do the job correctly and safely. If a condition is described, DO NOT assume that this Service Bulletin applies to your vehicle, or that your vehicle will have that condition.</p>	<p style="text-align: center;">Subaru of America, Inc. is ISO 14001 Compliant</p> <p>ISO 14001 is the international standard for excellence in Environmental Management Systems. Please recycle or dispose of automotive products in a manner that is friendly to our environment and in accordance with all local, state and federal laws and regulations.</p>
--	--

NOTES:

- The new hood grille is shipped unpainted therefore finishing to match the vehicle's body color will be required.
- In the event replacement Sealer Tapes are needed, they are available separately from the scoop assembly by ordering p.n. **90875VA030**.

SERVICE PROCEDURE / INFORMATION:

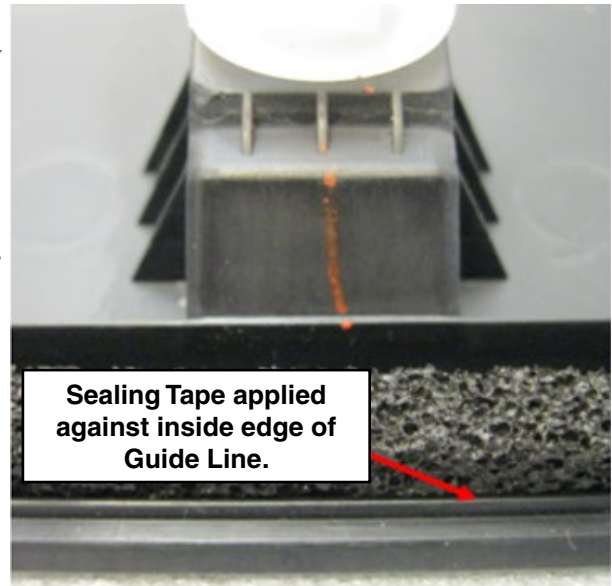
1. **CAREFULLY** remove the inner hood duct and scoop following the procedure in the applicable Service Manual.
2. Repair any abraded paint on the hood using touch-up paint. If the damage is too severe for the use of touch-up paint, a body shop spot repair may be necessary. If it is believed any more involved repairs are required, consult your DPSM **before** proceeding.
3. Identify the molded-in part number of the scoop currently installed:
 - If the part number is 90821VA000 or 90821VA002NN (the part number may or may not be molded into the part), replace it with the new part number 90829VA010NN.
 - If the VIN is after the production change or the scoop has already been replaced with the new part described in the image below, further inspection will be required for the cause of the paint damage outlined above in the Introduction section.
4. Paint the new scoop using normal refinishing procedures.
5. Using the illustration below as a guide, clean the areas of the new scoop where the Sealer Tapes will be applied with a mild solvent on a clean shop cloth and dry completely.



Continued...

6. A close inspection of the underside perimeter will reveal a molded-in Guide Line to identify where the Sealing Tapes are to be positioned when applied. Use this photo as a reference to show how the completed tape installation should appear. **CAREFULLY** peel the backing and beginning at the “Starting Point”, apply the Sealing Tape **INSIDE** the Guide Line. Be careful not to stretch the tape while applying it.

TIP: To make the Sealing Tape more manageable, peel the backing as the tape is applied.



7. Reinstall the scoop and related components in reverse order of removal. Torque the four 8mm retaining nuts and two hex bolts to 39 inch-pounds.

WARRANTY / CLAIM INFORMATION:

For vehicles within the Basic New Car Limited Warranty period, this repair may be claimed using the following information:

Labor Description	Labor Operation #	Failure Code	Labor Time
HOOD GRILLE (SCOOP) R&R, INSPECT & REPLACE	B915-195	XIW-48	0.4
INSTALL HOOD GRILLE (SCOOP) REPAIR KIT	C915-193		0.2
HOOD GRILLE(SCOOP) REPLACE W/ REFINISH	C915-194		0.9
HOOD PAINT TOUCH-UP	C915-191		0.2
HOOD COLOR COAT	C915-192		2.0
SUBLET REPAIR, ADMINISTRATION EXPENSES	C101-108		0.3

NOTE: Up to \$12.00 can be claimed in Sublet to cover the cost for touch-up paint.

IMPORTANT REMINDERS:

- SOA strongly discourages the printing and/or local storage of service information as previously released information and electronic publications may be updated at any time.
- Always check for any open recalls or campaigns anytime a vehicle is in for servicing.
- Always refer to STIS for the latest service information before performing any repairs.