



# Technical Service Bulletin

SUBJECT:		No: <b>TSB-18-54-003</b>	
<b>DOME LIGHT FLICKERS DUE TO IMPROPER CONTROL BY ETACS</b>		DATE: <b>June 2018</b>	
		MODEL: <b>See below</b>	
CIRCULATE TO:	<input type="checkbox"/> GENERAL MANAGER	<input checked="" type="checkbox"/> PARTS MANAGER	<input checked="" type="checkbox"/> TECHNICIAN
<input checked="" type="checkbox"/> SERVICE ADVISOR	<input checked="" type="checkbox"/> SERVICE MANAGER	<input checked="" type="checkbox"/> WARRANTY PROCESSOR	<input type="checkbox"/> SALES MANAGER

## PURPOSE

Due to utilization of a new generation of ETACS, a revision of the control specification has resulted in the dome light flickering when the vehicle's doors are opened or the dome light switch is turned to "ON". This TSB instructs dealers to reprogram the ETACS ECU with updated software on affected vehicles exhibiting this condition.

## AFFECTED VEHICLES

2008–2017 Lancer  
 2008–2015 Lancer Evolution  
 2009–2017 Lancer Sportback  
 2007–2013 Outlander  
 2011–2017 Outlander Sport/RVR

**NOTE: Not every vehicle is affected by this condition. Please refer to the "ETACS ECU Reprogramming Chart" for the ETACS part number. If the customer is experiencing this issue with a different ETACS part number than those listed in the table, please contact Techline to open a Techline Case, then only proceed as directed by Techline.**

## REQUIRED OPERATIONS

Reprogram the ETACS software with the countermeasure on a customer complaint basis only.

1. Confirm if the reprogramming is applicable by checking the ETACS and its software number in the provided "ETACS ECU Reprogramming Chart."
2. Conduct "Copy coding" including customized data with MUT.
3. Reprogram the ETACS to countermeasure software shown in the "ETACS ECU Reprogramming Chart."
4. Rewrite the coding data and the customization data to ETACS.

## EQUIPMENT

**The following equipment is needed to reprogram the ETACS ECU.**

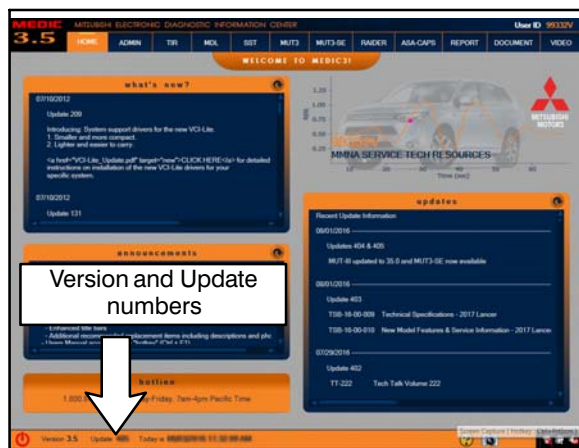
- VCI (Vehicle Communication Interface) or VCI Lite – MB991824 or MB992744V.
- MEDIC Laptop/Tablet with A/C power adapter – 520924, or FZG1MK2.
- MUT–III main harness 'A' (blue connector at the DLC end) – MB991910 or MB992745V
- USB 2.0 cable – MB991827 or RRAR1MBR–108GL
- MEDIC 3.5/4 update at 532 or higher.
- For Standalone MUT–III units, MUT3–SE Reprogramming Database **N180601** or higher

## ETACS ECU REPROGRAMMING CHART

Destination	MY	Model Code	ETACS ECU Part No.	Data No.	Software Part Number	
					Current	New
ALL	ALL	CY0A CX0A CZ4A CW0W GA0W	8637B540 8637B560 8637B590	8637C196	8637B540-A (07.03.00)	8637B542-A (02.00.02)
			8637B550 8637B551		8637C198	8637B550-A (01.01.00)

## REPAIR PROCEDURE

### SOFTWARE/MEDIC VERSION VERIFICATION



**For MEDIC 3.5/4 users only: (MUT-III STV users go to step 5)**

1. Verify the MEDIC 3.5/4 is at version 3.5 and at update 532 or higher.

If your **MEDIC 3.5/4 update is at least 532**, continue with the Reprogramming Procedure on page 4.

If your **MEDIC 3.5/4 update is below 532**, update your MEDIC as follows.



2. Select the MEDIC 3.5/4 Admin tab and click on "MEDIC UPDATES."

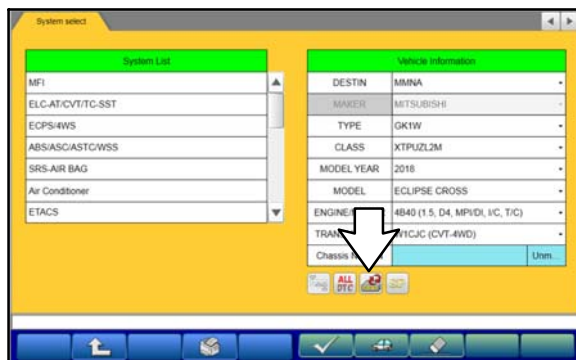


3. If the MEDIC update screen advises updates are available, click the “Begin” button. After all updates are complete, **GO TO THE REPROGRAMMING PROCEDURE.**

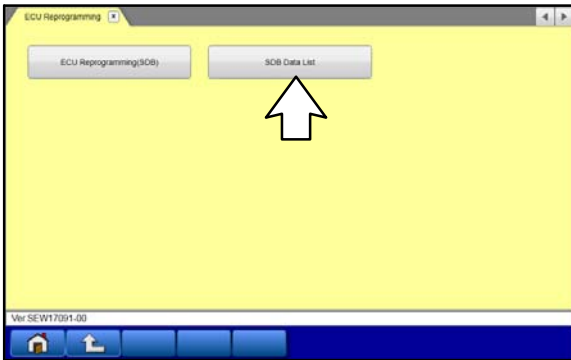


4. **STANDALONE MUT-III SCAN TOOL VIEWER (STV) ONLY: (MEDIC 3.5 USERS – GO TO THE REPROGRAMMING PROCEDURE.)** Verify that your MUT3-SE has the most current version of the reprogramming database:  
From the MUT3-SE Main Page:

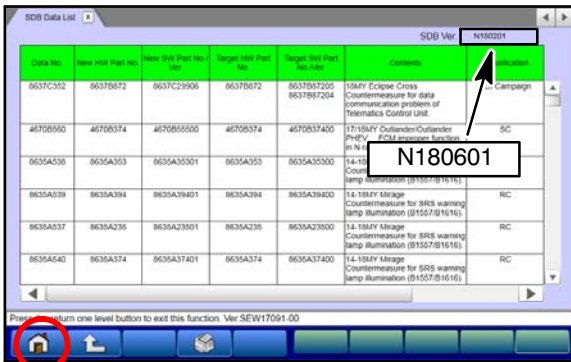
a. Click “STV.”



b. Click the “ECU Reprogramming” button.



c. Click “SDB Data List.”



d. Confirm that the database number displayed in the upper right above the chart is **N180601** or higher

- If the database number displayed on your MUT3-SE is N180601 or greater, continue to the next section.
- If the reprogramming database number displayed on your MUT3-SE is **lower** than **N180601**, then the MUT3-SE database needs to be updated.

e. Once database number is confirmed, hit the Home button to go back to the System Select screen.

**NOTE:** Reprogramming the ETACS ECU with the latest database (e.g., **N180601**) includes all past and current software updates. It is not necessary to reprogram the ETACS ECU for each previous TSB.

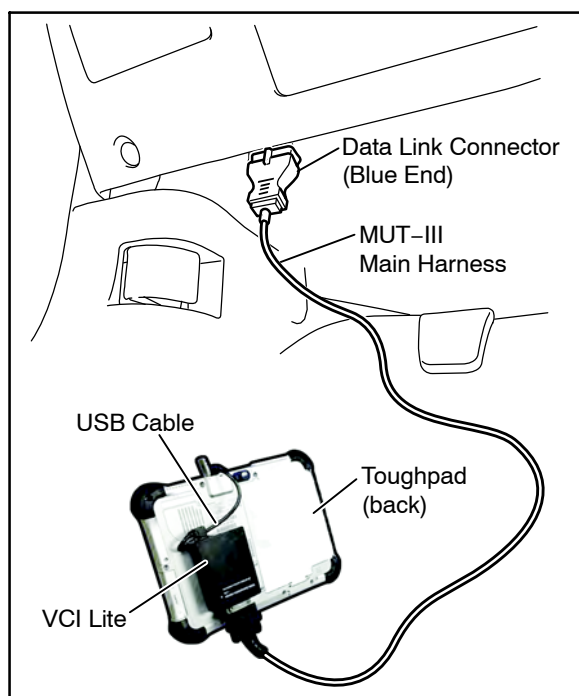
## REPROGRAMMING PROCEDURE

**NOTE:** VCI Stand-alone reprogramming is not available for this procedure.  
The laptop/tablet and the VCI must remain connected for the entire procedure.

**CAUTION** To ensure that the vehicle battery maintains 12V during the procedure, hook-up a battery charger to the vehicle during the procedure.

1. Connect the equipment as follows:

**NOTE:** VCI Lite and MEDIC 4.0 Toughpad shown for illustration purposes only.



- Turn the MEDIC PC/tablet on. If the battery indicator in the lower right hand corner of the screen does not show a full charge, it is recommended that either the battery be charged prior to beginning, or be used with the A/C power adaptor connected.
- Connect the USB cable to the VCI/VCI Lite.
- When the laptop/tablet displays the MEDIC main screen, connect the USB cable to the device.
- Connect the MUT-III main harness with the blue DLC connection to the VCI/VCI Lite.
- Connect the blue connection of the MUT-III main harness to the vehicle's data link connector.
- Turn the VCI power switch ON. Verify that the indicator lamp in the upper right corner of the screen is green.

**CAUTION**

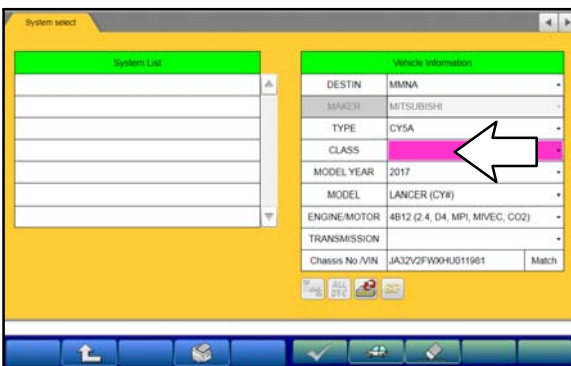
**DO NOT DISTURB THE HARNESS CABLES OR CONNECTIONS DURING THE CODING/REPROGRAMMING PROCESS AS IT COULD CAUSE THE CONTROL UNIT TO LOSE DATA. IF THE USB CABLE IS DISCONNECTED DURING THIS PROCEDURE, A WARNING MESSAGE WILL DISPLAY.**

2. Turn the ignition switch to the "ON" position.



- Using MEDIC, from the main page, click the "MUT3-SE" icon at the top center of the screen to open MUT-III SE.

Click the "STV" button.

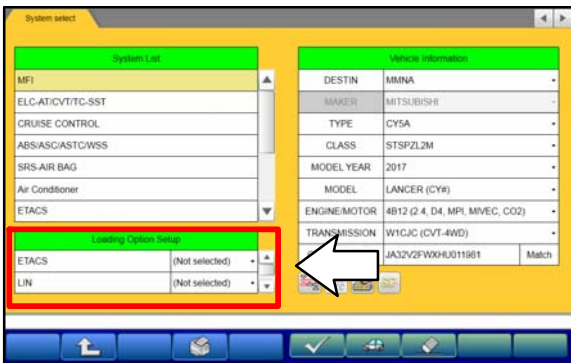


- The System Select screen opens and populates with some basic information from the vehicle.

Look at the label on the passenger side B pillar to identify the appropriate class.

If necessary, select the correct class from the drop-down list.

Verify if the correct class is selected before moving forward.

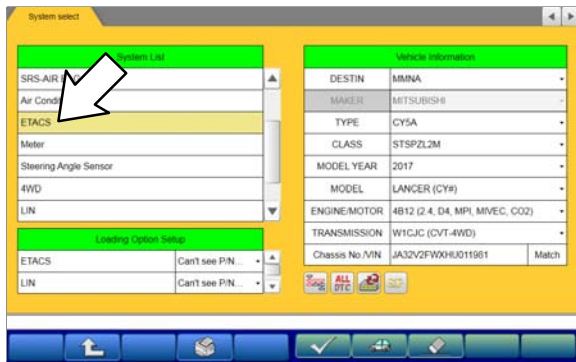


- The System List should now populate with vehicle information.

If required, select the correct Loading Option Setup from the drop-down lists.

- ETACS: (e.g., Can't see P/N / Can see P/N)
- LIN: (e.g., Can't see P/N / Can see P/N)
- FAST/IMMO/Keyless/TPMS: (e.g., IMMO & Keyless / IMMO & FAST & TPMS)

6. Verify that the ETACS has not already been updated to the latest S/W number shown in the “**ETACS ECU Reprogramming Chart**” in this TSB. If the ETACS is at the latest level, reprogramming is not necessary.



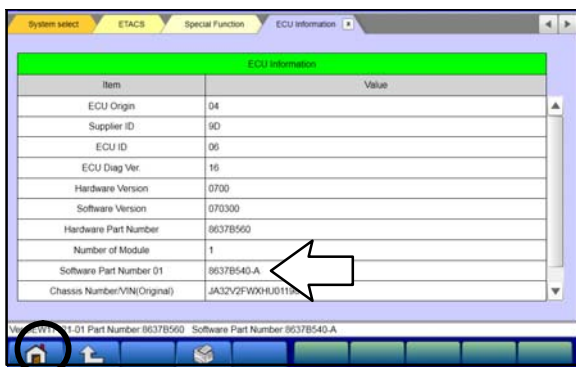
- a. Select (double-click) “ETACS” in the System List.



- b. Select “Special Function.”



- c. Select “ECU Information.”

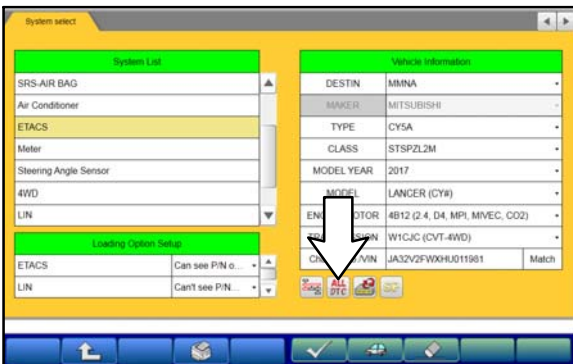


- d. If “Software Part No.” is “8637B542–A” or “8637B550–B”: the ETACS has already been reprogrammed. Perform diagnosis per the applicable service manual.

If software Part No. is 8637B540–A or 8637B550–A, then the ETACS needs to be reprogrammed to the latest version.

- e. Hit the Home button to go back to the System Select screen.

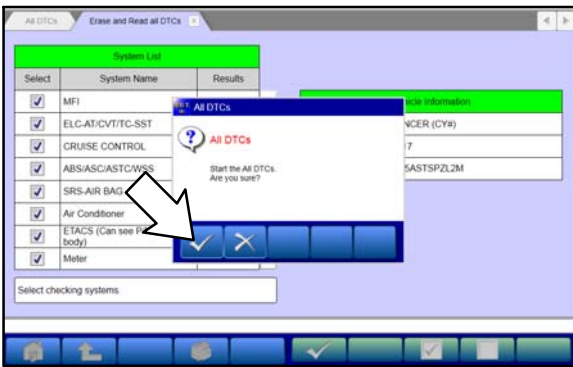
7. Before reprogramming, perform an “Erase and Read All DTCs” to clear any DTCs that may have set.



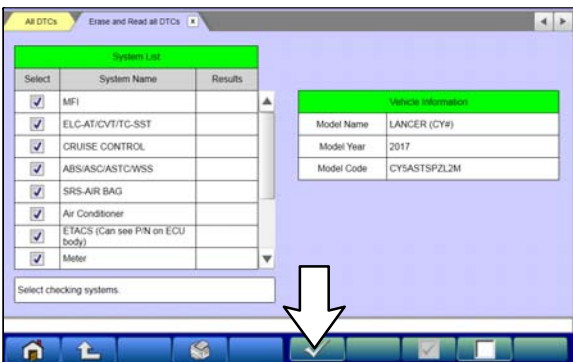
a. Click the “ALL DTC” button.



b. Select “Erase and Read All DTCs.”



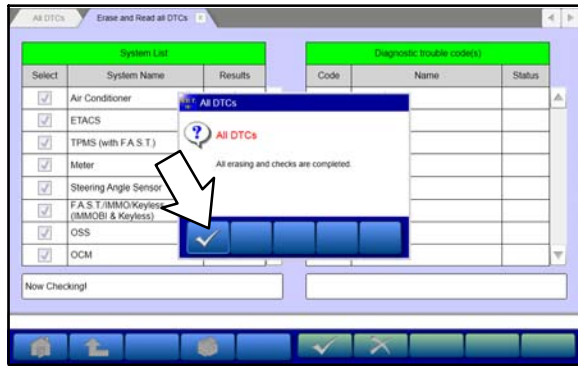
c. A window will pop up asking you to confirm DTC erasing. Click the check mark in the dialog box for DTC erasing and reading to begin.



d. The “System List” on the left side of the screen will have all selections checked. Do not change these selections.

e. Click the check mark to continue.

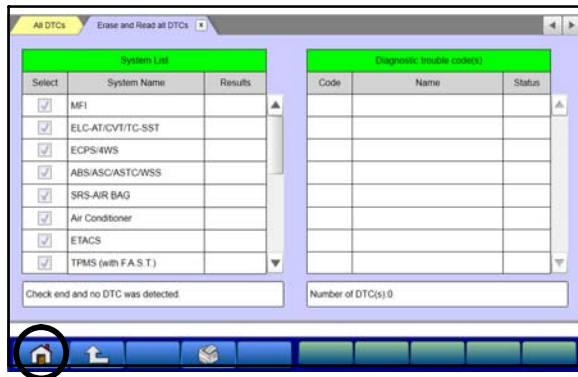




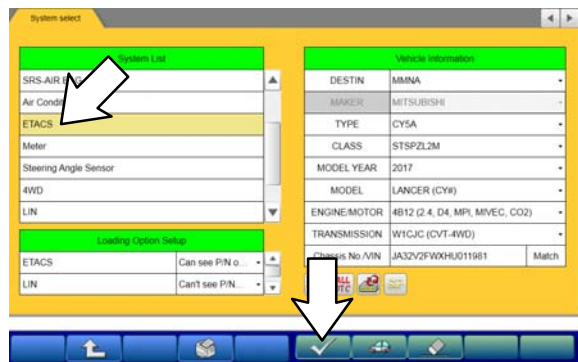
8. When DTC erasing is completed, click the check mark in the pop-up message that reads “All erasing and checks are completed.”

a. If any DTCs return after erasing is completed, click the check mark to clear the window. Diagnose and repair per the Service Manual.

b. If DTCs do not return, click the check mark to clear the window, then click the Home icon in the lower left to return to the System Select menu.



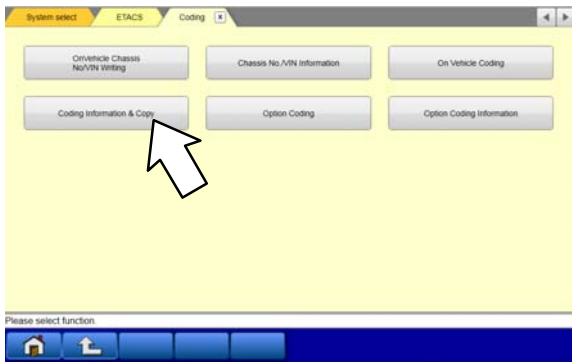
**9. Conduct “Copy Coding” including customization data with MUT.**



a. Click on “ETACS” from System Select menu.



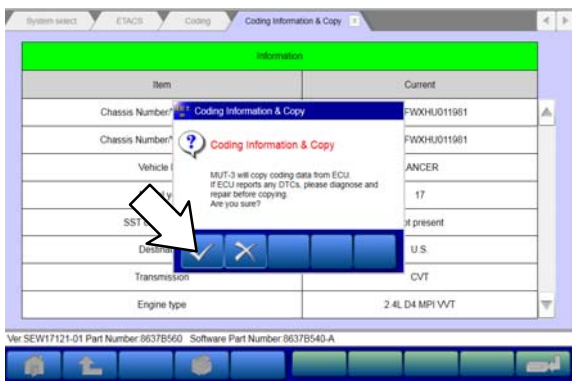
b. Select “Coding.”



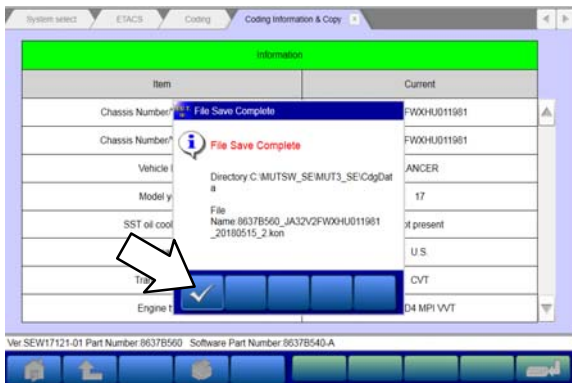
c. Select "Coding Information & Copy."



d. Click icon on the bottom right side of the page, to copy coding information.



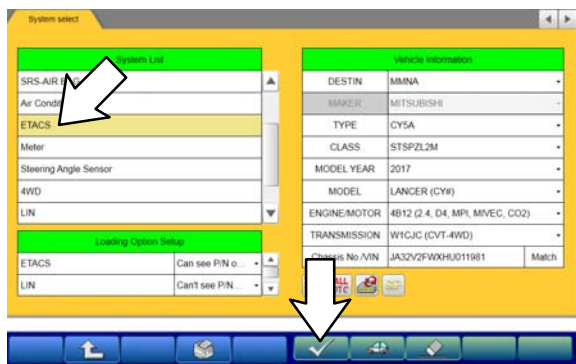
e. Click the check mark to copy the coding information.



f. Click the check mark.



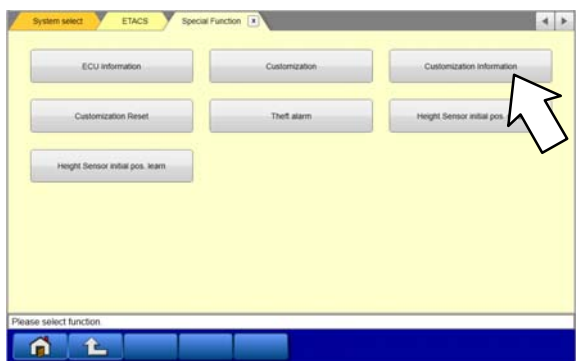
g. Click the home icon on the bottom of the page.



h. Click on "ETACS" from System Select menu.



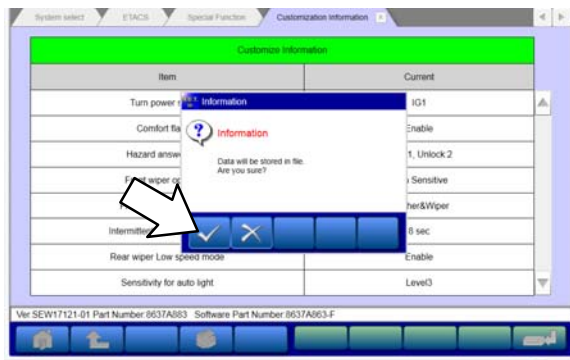
i. Select "Special Function."



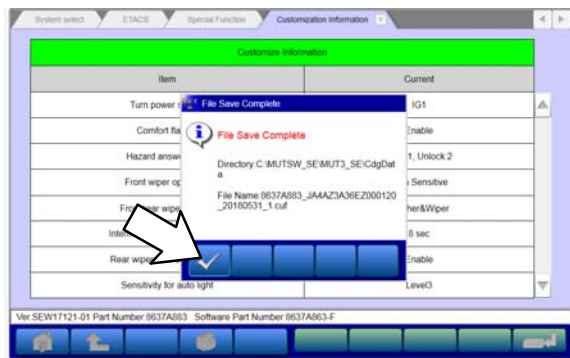
j. Select "Customization Information."



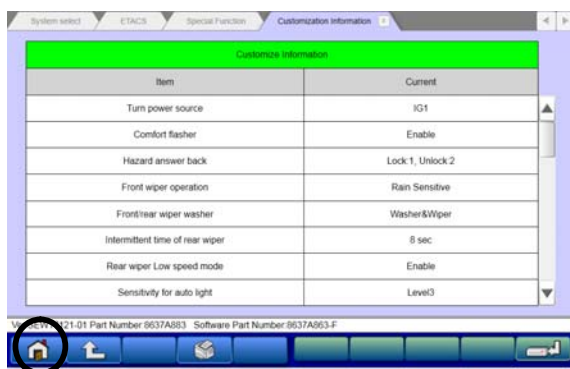
k. Click the save the hard disk icon at the bottom right side of the screen.



l. Click the check mark to store the data.

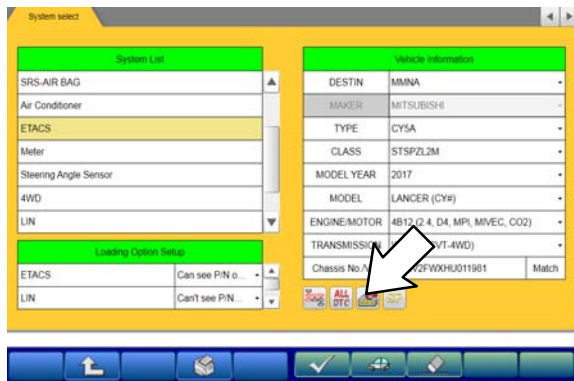


m. Click the check mark once save is complete.

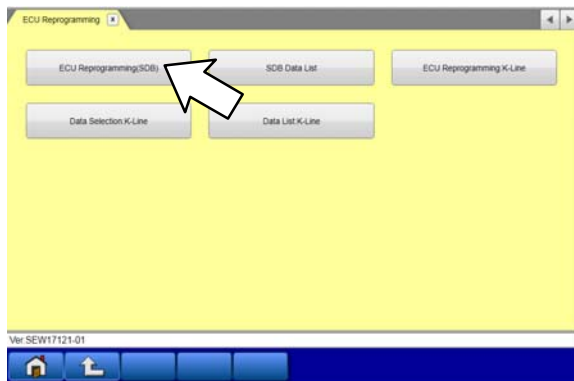


n. Click the home icon on the bottom of the page.

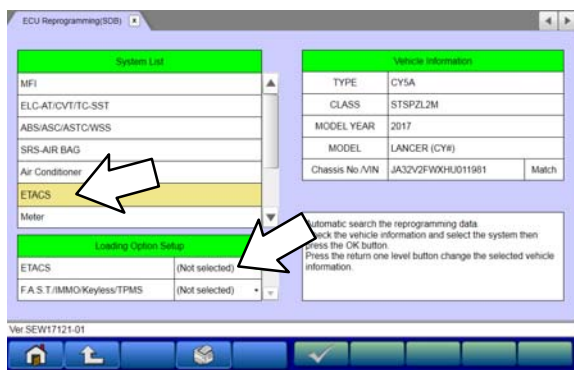
## 10. Reprogram ETACS.



a. On the System Select page, click on the Reprogram button.



b. Select “ECU Reprogramming(SDB).”

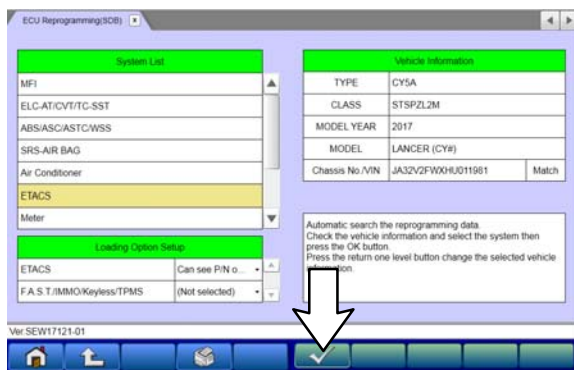


c. Select “ETACS” in the System List.

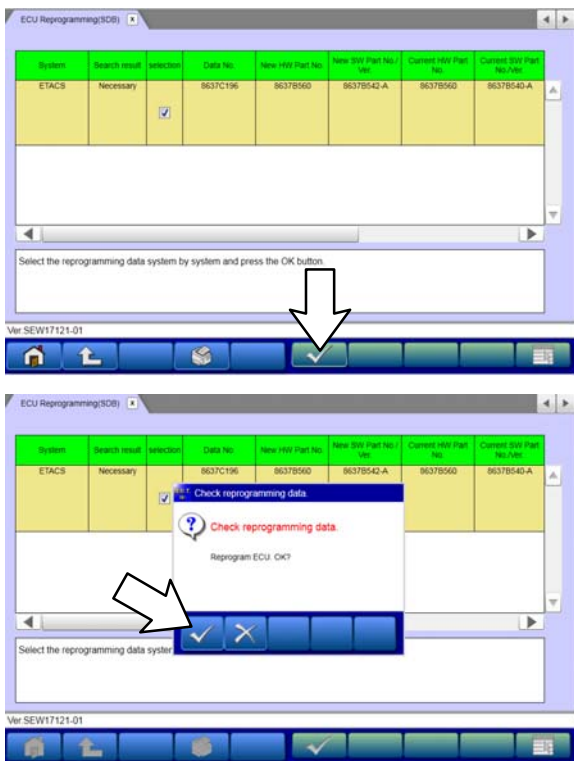
If required, select the correct Loading Option Setup from the drop-down lists.

ETACS: (can see P/N or can't see P/N)

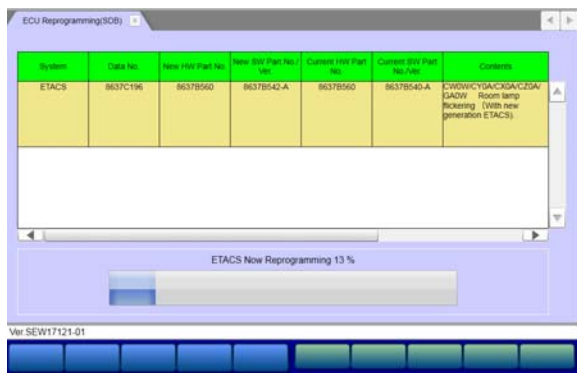
FAST/IMMO/Keyless/TPMS: (select correct system)



d. Click the check mark icon at the bottom of the page.

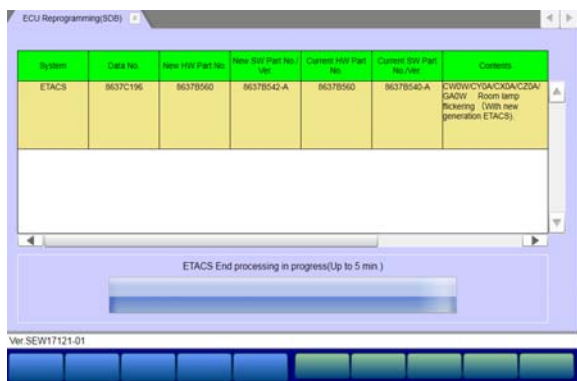


- e. Verify the ETACS ECU Part No., Data No., Current S/W Part No., and the New S/W Part No. in the table matches the **“ETACS ECU Reprogramming Chart”** on Page 2.
- f. Click the check mark at the bottom of the page to initiate reprogramming.
- g. Click the check mark in the “Check reprogramming data” dialog box.

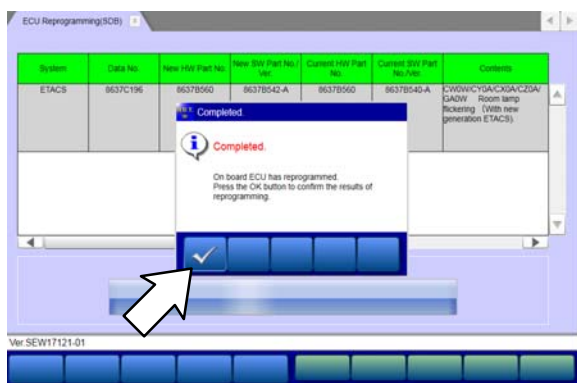


- h. Once the reprogramming is initiated, the screen shown will indicate the reprogramming progress.

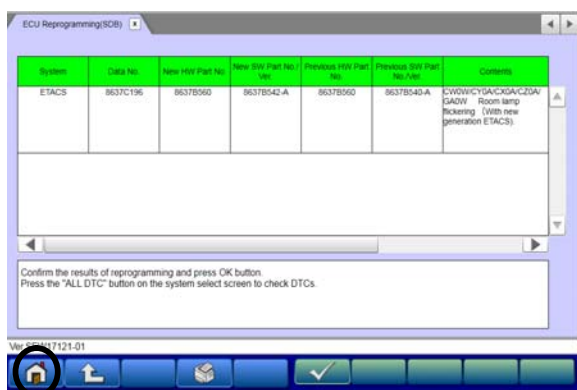
**NOTE:** It may take 30–60 seconds for the progress bar to start moving.  
 Do NOT disturb the cables or turn off the ignition during reprogramming.



- i. When reprogramming is completed, click the check mark in the “Completed” dialog box.

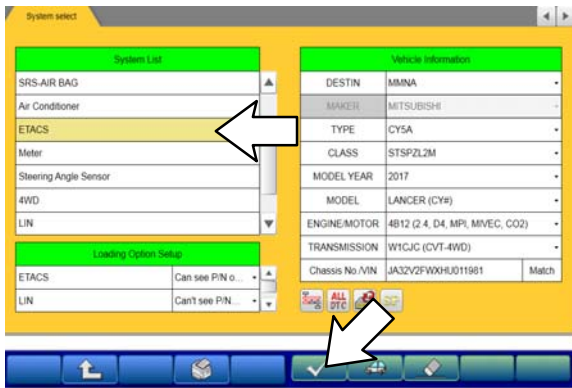


- j. Verify the correct information is listed in the table. Click the Home button to return to the System Select screen.



11. Rewrite the coding data and customized data to ETACS.

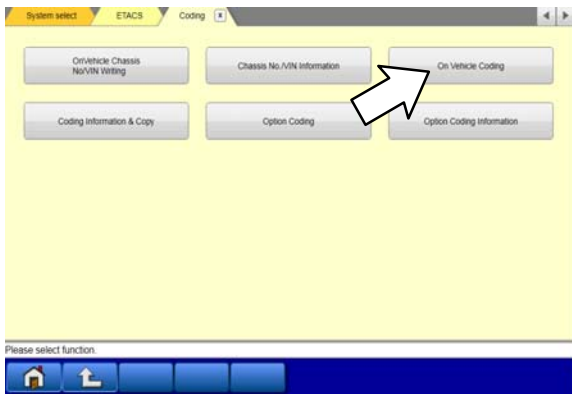
a. Select "ETACS" from the system Select menu.



b. Select "Coding."



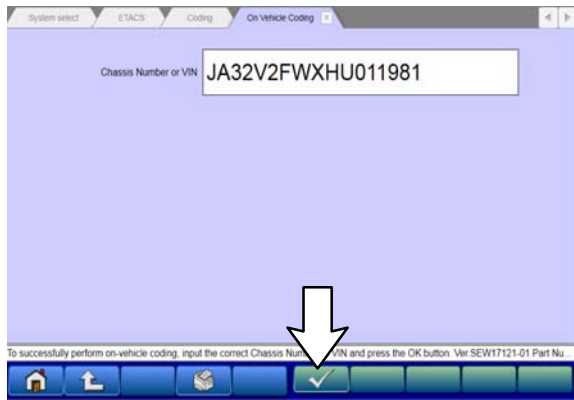
c. Select "On Vehicle Coding."



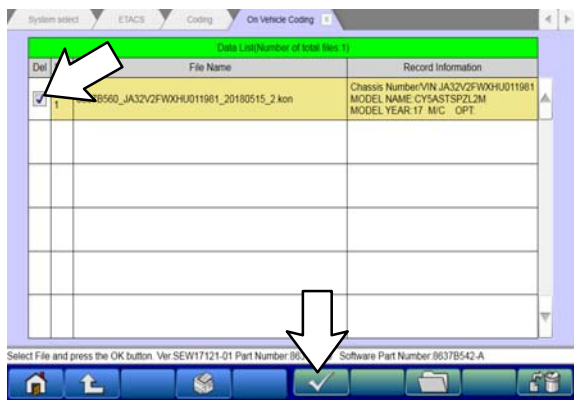
d. Enter the vehicle's Chassis Number or VIN.



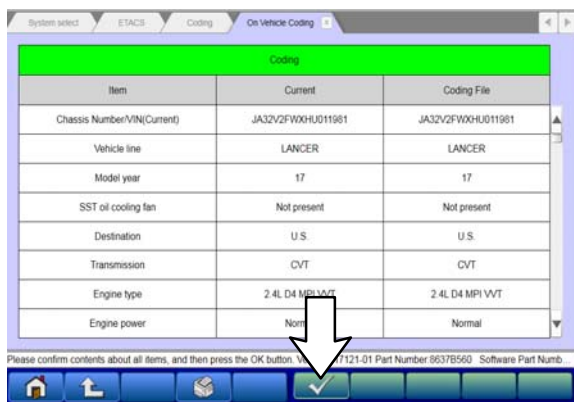




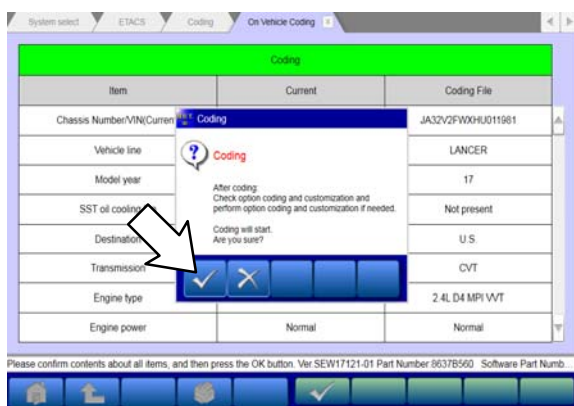
e. Once the Chassis Number or the VIN is entered, click the check mark at the bottom of the page.



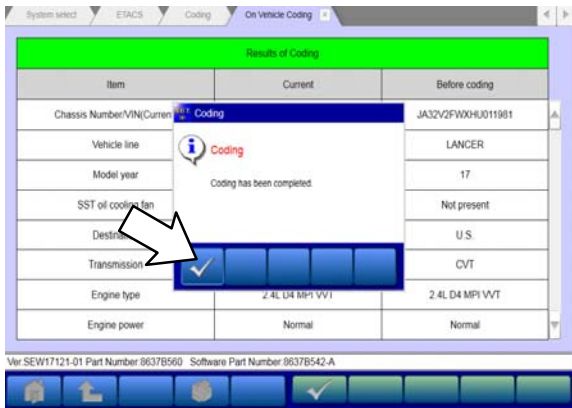
f. Click on the box to select the file on the Data List, then click the check mark at the bottom of the page.



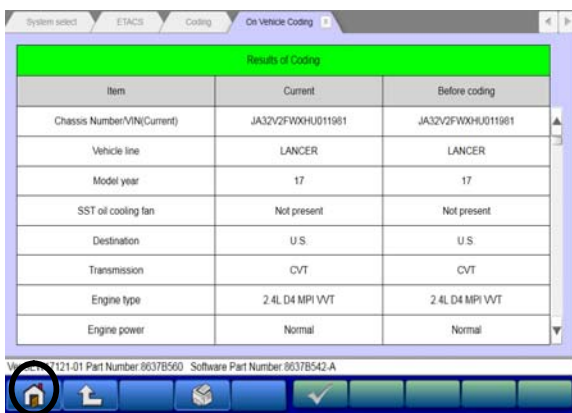
g. Click the check mark at the bottom of the page.



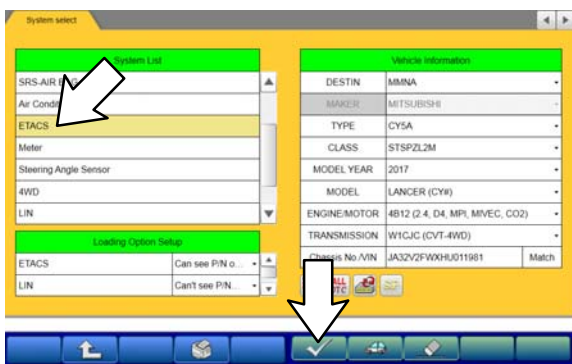
h. Click the check mark in the dialog box to begin the coding process.



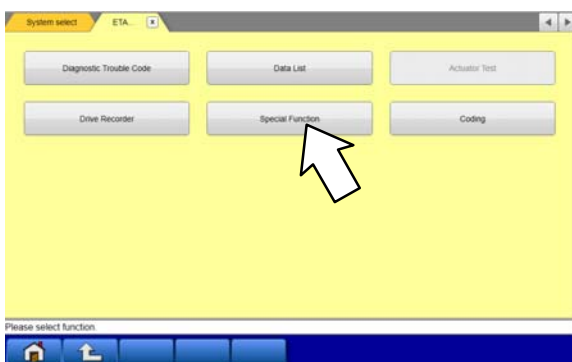
i. Click the check mark in the “Completed” dialog box.



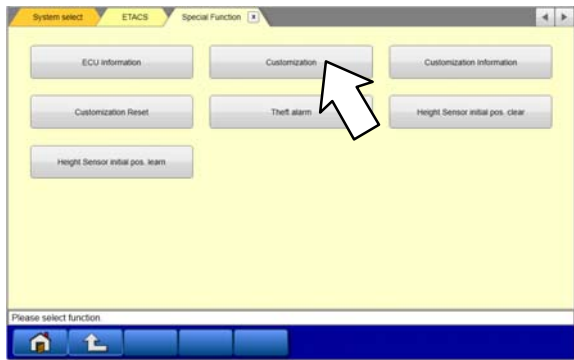
j. Click the Home button at the bottom of the screen.



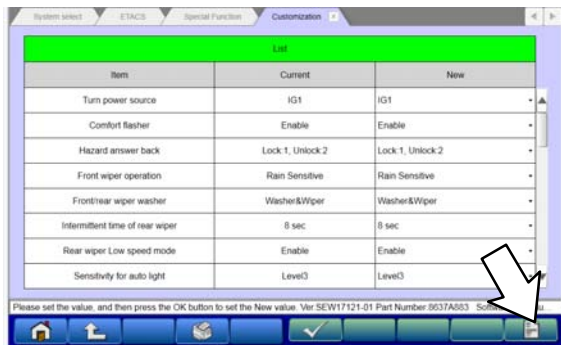
k. Click on “ETACS” from System Select menu.



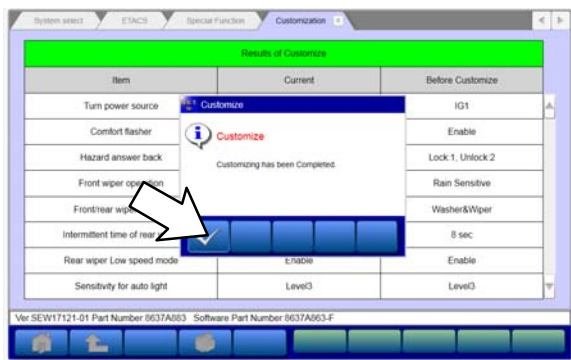
l. Select “Special Function.”



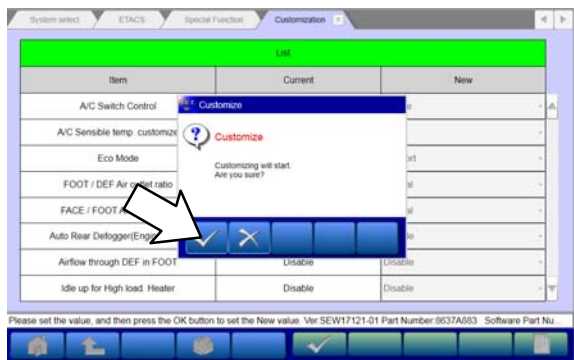
m. Select "Customization Information."



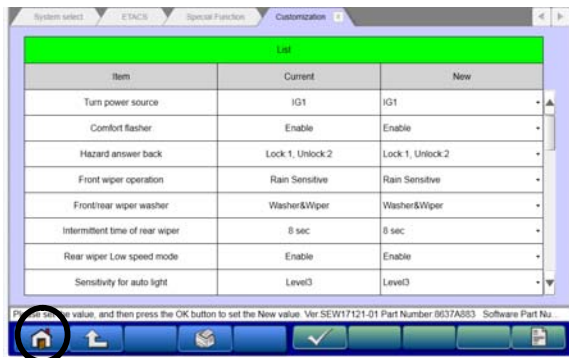
n. Click the select file icon at the bottom right side of the screen.



o. Click the check mark once customization is complete.

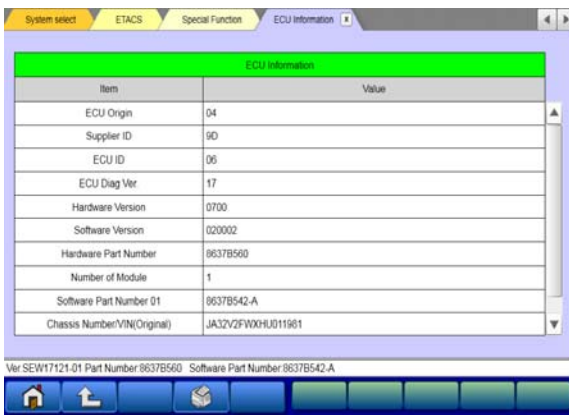


p. Click the check mark to customize data.



q. Click the home icon on the bottom of the page.

12. Perform an “Erase and Read All DTCs” again to clear any DTCs that may have set. **For instructions, refer to steps 7 and 8 in this TSB.**



13. Verify that the software Part No. is now at the latest number listed in the “**ETACS ECU Reprogramming Chart**” in this TSB. **For instructions, refer to step 6 in this TSB.**

14. Turn off the ignition switch and disconnect the MUT—III. Turn off and disconnect the battery charger.

15. Confirm operation by opening the vehicle’s doors or turning the dome light to “ON.”

16. Test drive the vehicle to confirm proper operation.

## WARRANTY INFORMATION

This bulletin is supplied as technical information only and is not an authorization to repair. If an affected vehicle is reported with the described condition, diagnose the condition, repair as described in this bulletin and submit a normal warranty claim using the following information.

Operation	Labor Operation Code	Nature Code	Cause Code	Time Allowance
Reprogram ETACS ECU	548501TH	610	5D0	0.4 hrs.

Warranty Coverage: 8 years / 80,000 miles; (Canada: 8 years / 130,000 kms)