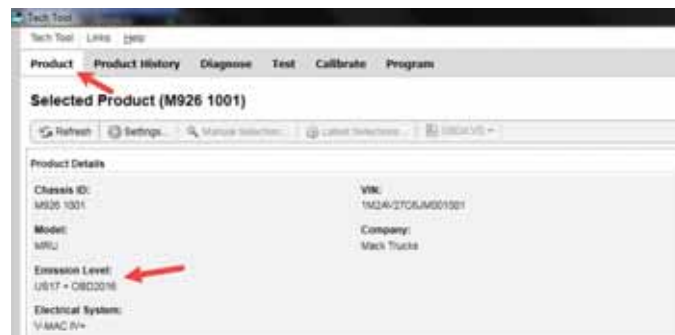




## Mack Models

<b>Mack Model</b>	LR , MRU , CHU , CXU , GU , TD
<b>Engine family</b>	
Engine family	MP7 , MP8 , MP10
<b>Emission Standard</b>	
Emission Standard	US15
<b>** SOLUTION **</b>	
Title	Mack Chassis - Diagnostic Trouble Code ( DTC ) P20CF, Diagnosis And Repair - <b>US14 +OBD15 Emissions, Common Model Year 2016</b>
Cause	P20CF may log in US14+OBD15 chassis; Guided Diagnostics (GD) may result in No Fault Found (NFF).
Solution	<b>Verify the chassis emissions level</b>

- Details can be found in the Product Details box on the Product tab in PTT as seen below:



Software improvements have been released to address this DTC. A Field Service Bulletin with information and instructions has been published and can be found under the Service tab in [Impact](#), [Function Group 284](#). The article can also be searched for by Title. Refer to the chart below for the correct bulletin information:

Emissions Level (Model Year)	Field Service Bulletin
US14+OBD15 (2016)	FSB 284-064 Engine Control Module (ECM) and Aftertreatment Control Module (ACM), Reprogramming

If the Bulletin does not appear when searched with either VIN or Chassis information entered, search by model:

1. Clear any chassis information from the Search box.
2. Select or enter the applicable model.

3. Make sure Title is selected in the Search By field. Enter the correct Bulletin title in the text entry field.

4. Press the Search button. The operation will appear in the results window.

Fgrp	Title	Info type	ID/Operation
284	FSB 284-064 Engine Control Module (ECM) and Aftertreatment Control Module (ACM) Reprogramming	Repair	2841-22-0A-16

5. Select the correct vehicle configuration from the list that appears as shown below:

FSB 284-064 Engine Control Module (ECM) and Aftertreatment Control Module (ACM), Reprogramming

Description	ID	Date
<input type="checkbox"/> CXU, ENG-VE11, Assembly Date 2015-01-01 - 2015-12-31		06/08/2018
<input type="checkbox"/> CXU, ENG-VE13, Assembly Date 2015-01-01 - 2015-12-31		
<input type="checkbox"/> CXU, ENG-VE16, Assembly Date 2015-01-01 - 2015-12-31		

**If software is current and the code is present**, the code confirmed status should be verified to be True as shown above before continuing diagnosis. If the status is False and there are no related codes or symptoms, clear the code and release the vehicle.

NA\_Sister solutions

[K31539545](#)

Campaign code

FSB284-064

Solution visibility

[Dealer distribution](#)

### Function(s)/component(s) affected

Function affected

FSB , fuel supply , Fuel Dosing , 1 1 0 EMS , Diagnostic tool

### Function Group

Function Group 254 catalytic converter; exhaust emission control equipment , 258 emissions after-treatment , 284 control system, fuel supply

---

### Customer effect

---

Main customer effect regeneration , calibration/programming/pairing/missing operation , diagnostics /methodology , efficiency/abnormal behavior , fault code/display

---

Fluid implicated fuel

---

Lights/Messages on information display  Driver's information warning pictogram

---

### Fault code(s)

---

OBD 2013 Diagnostic Trouble Codes P20CF

---

### Conditions

---

Vehicle operating mode when driving , when stationary

---

Frequency of occurrence of problem random

---

### Administration

---

Author RU4469V

---

Dealer ID RU4469V

---

Last modified by RU4469V

---

Creation date 20-04-2018 16:04

---

Date of last update 19-06-2018 21:06

---

Status Published

---