



**Countries:** CANADA, UNITED STATES **Document ID:** IK1600243  
**Availability:** ISIS, FleetSIS, NotSIR **Revision:** 0  
**Major System:** CAB / SLEEPER / HOOD **Created:** 2/22/2018  
**Current Language:** English **Last Modified:** 5/15/2018  
**Other Languages:** NONE **Author:** Jeff Novak  
**Viewed:** 66

[Less Info](#)

Hide Details

Coding Information

<b>Copy Link</b> 	<b>Copy Relative Link</b> 	<b>Bookmark</b>  <a href="#">View My Bookmarks</a>	<b>Add to Favorites</b> 	<b>Print</b> 	<b>Provide Feedback</b> 	<b>Helpful</b>  4	<b>Not Helpful</b>  0
----------------------	-------------------------------	--	-----------------------------	------------------	-----------------------------	-------------------------	-----------------------------

**Title:** ProStar Battery Access Door Magnetic Latch Update

**Applies To:** ProStar

## **CHANGE LOG**

Please refer to the change log text box below for recent changes to this article:

05/15/2018 - Initial Article Release

## **DESCRIPTION**

This document will guide you through the process of updating the ProStar battery access door latch. Prostar vehicles are equipped with two 1/4 turn latches which hold the battery access door shut. There is now the option to retrofit the battery access doors to a magnetic style latch. Follow the instructions below to complete the retrofit.

## **SYMPTOM(s)**

**Customer Observations or Concerns:**

- Failed 1/4 turn latch

## **SPECIAL TOOL(s) / SOFTWARE**

Not applicable

## **SERVICE PARTS INFORMATION**

The parts listed in the table below are required to update the battery access door latch.

Kit Description	Part Number	Quantity Required	Notes
KIT, BATTERY DOOR ACCESS	2517032C91	1	

---

## **DIAGNOSTIC STEP(s)**

Not Applicable

---

## **REPAIR STEP(s)**

### **INSTALLATION PROCEDURE:**

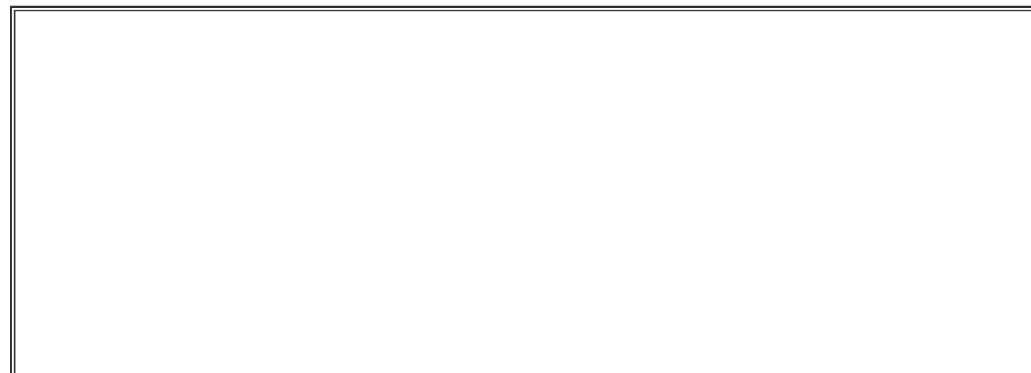
Step #1: Remove both 1/4 turn assemblies from the battery access door cover (Figure #1)

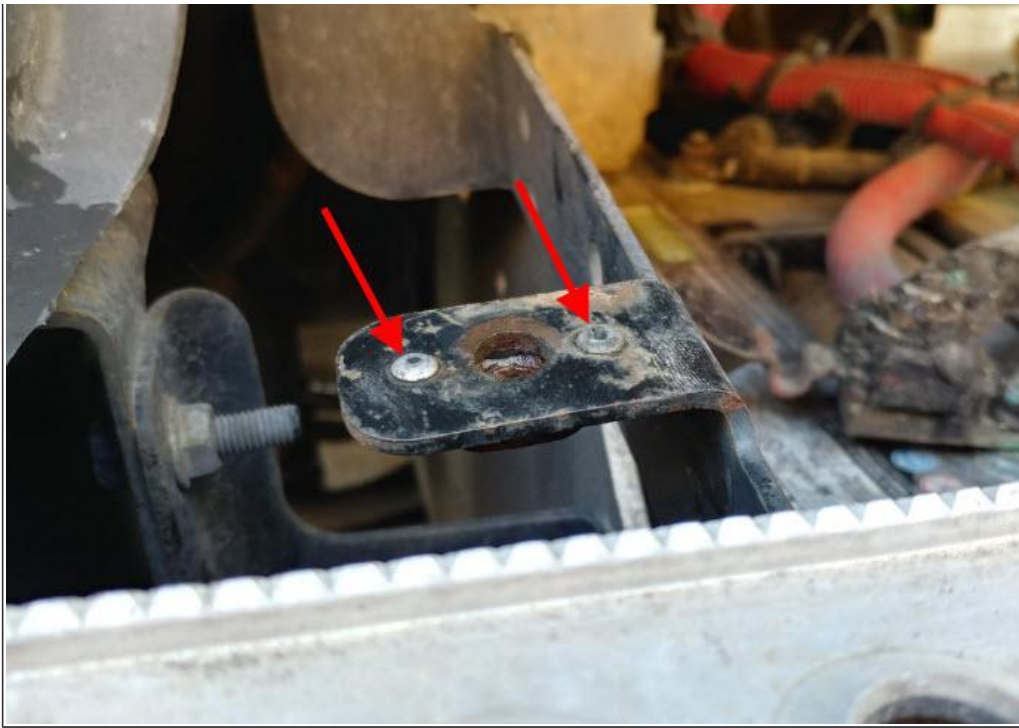


**Figure # 1**

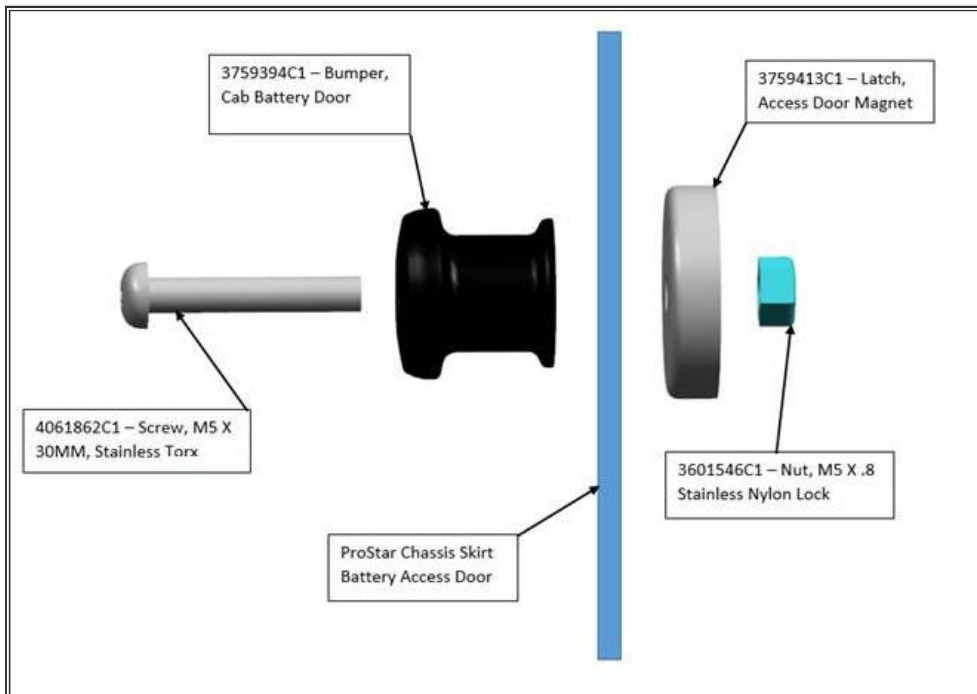
Step #2: Drill out the two rivets holding the lower 1/4 turn assembly to the battery box bracket (Figure #2). Do this for the forward and rearward 1/4 turn latch assemblies.

**NOTE:** For corrosion protection, apply some black chassis paint to each of the battery tray tabs



**Figure #2**

Step #3: Following figure #3 assemble the bolt, bumper, magnet and nut on the battery access door cover. Torque the bolt to **1.4-1.7 N-M** so the rubber bumper is not over compressed.

**Figure #3 - Kit 2517032C91 contains the parts above**

Step #4: Verify the battery access door closes and magnetic latches engage the tabs on the battery tray.



Figure #4

---

## **WARRANTY INFORMATION**

### **Warranty Claim Coding:**

Refer to the [Warranty Coding Manual](#) for Group and Noun Codes.

### **Standard Repair Time(s):**

Refer to the [SRT Manual](#) for Repair Times

---

## **OTHER RESOURCES**

[Master Service Information Site](#)

 Hide Details

#### Feedback Information

Viewed: 65

Helpful: 4

Not Helpful: 0

No Feedback Found