



<b>Countries:</b>	CANADA, UNITED STATES, MEXICO	<b>Document ID:</b>	IK0800550
<b>Availability:</b>	ISIS, FleetISIS, IsSIR	<b>Revision:</b>	4
<b>Major System:</b>	ELECTRICAL SYSTEM	<b>Created:</b>	9/6/2017
<b>Current Language:</b>	English	<b>Last Modified:</b>	5/3/2018
<b>Other Languages:</b>	NONE	<b>Author:</b>	Charles Schroeder
<b>Viewed:</b>	1508		

[Less Info](#)

Hide Details

Coding Information

<b>Copy Link</b> 	<b>Copy Relative Link</b> 	<b>Bookmark</b>  <a href="#">View My Bookmarks</a>	<b>Add to Favorites</b> 	<b>Print</b> 	<b>Provide Feedback</b> 	<b>Helpful</b>  2	<b>Not Helpful</b>  0
----------------------	-------------------------------	--	-----------------------------	------------------	-----------------------------	-------------------------	-----------------------------

**Title: Multi Module Programming Information for In-Cab Modules**

**Applies To: LT, RH, HV, MV**

## Change Log

Please refer to the change log text box below for recent changes to this article:

05/03/2018 - Title updated. Applies to updated to reflect current models that utilize multiple programmable modules.	
01/04/2018 - Revised Content. Added information to ensure DLB is up to date. Steps to program multiple modules.	
Steps to program a single module. Added Table of Contents for Repair Steps.	
09/20/2017 - Title changed for searching purposes	
09/08/2017 - Initial Article Release	

## Description

This document will guide the user through Module Kernel Updating using International Diamond Logic® Builder Software (DLB).

This applies to all vehicles equipped with feature code 0508097 - ELEC SYS MUX COMMON ARCHITECTURE for Electrical Common Architecture System

Models that utilize multi module programming:	Modules that can be updated with DLB using 'Update All':	Modules that can be updated with DLB individually:
<ul style="list-style-type: none"> <li>LT</li> <li>RH</li> <li>HV</li> <li>MV</li> </ul>	<ul style="list-style-type: none"> <li>Body Control Module (BCM)</li> <li>Instrument Cluster</li> <li>Lighting Control Module</li> <li>Six Position Switch-Packs</li> <li>Stalk Shifter</li> <li>Front HVAC Control Module</li> </ul>	<ul style="list-style-type: none"> <li>Body Control Module (BCM)</li> <li>Instrument Cluster</li> <li>Lighting Control Module</li> <li>Six Position Switch-Packs</li> <li>Stalk Shifter</li> <li>Front HVAC Control Module</li> </ul>

### NOTE:

#### Important Software Versions for the Instrument Cluster:

<b>4.02.01 (Premium)</b>	Software 4.02.01 (Premium), 4.01.03 (Base) <u>or above</u> will resolve complaint of <b>Trailer ABS</b> light performing bulb check at key on, when an ABS equipped trailer is connected.
<b>4.01.03 (Base)</b>	

## Symptoms

### Diagnostic Trouble Codes & Dashboard Indicator Lights:

DTC/Light	Description
No Faults or Warning Lights	

### Customer Observations or Concerns:

- Not Applicable

## Special Tools / Software

Tool Description	Tool Number	Comments	Instructions
International® Diamond Logic® Builder (DLB)		EZ-Tech® Software	

## Diagnostic Steps

Not Applicable

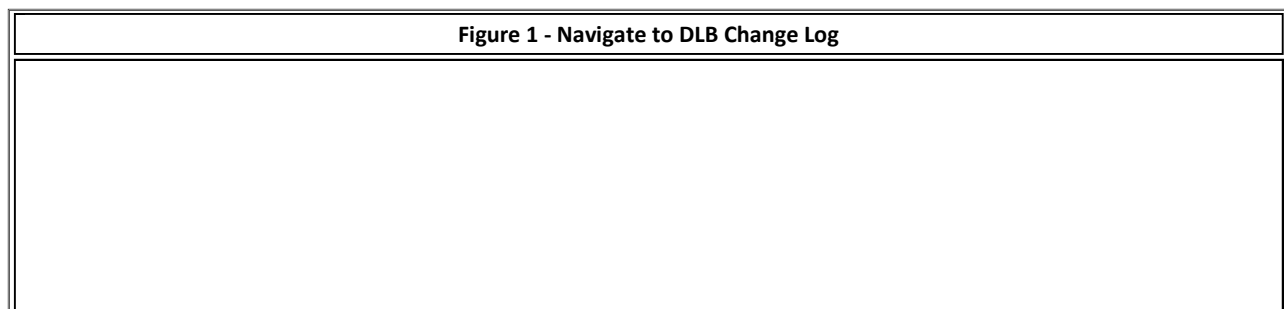
## Repair Steps

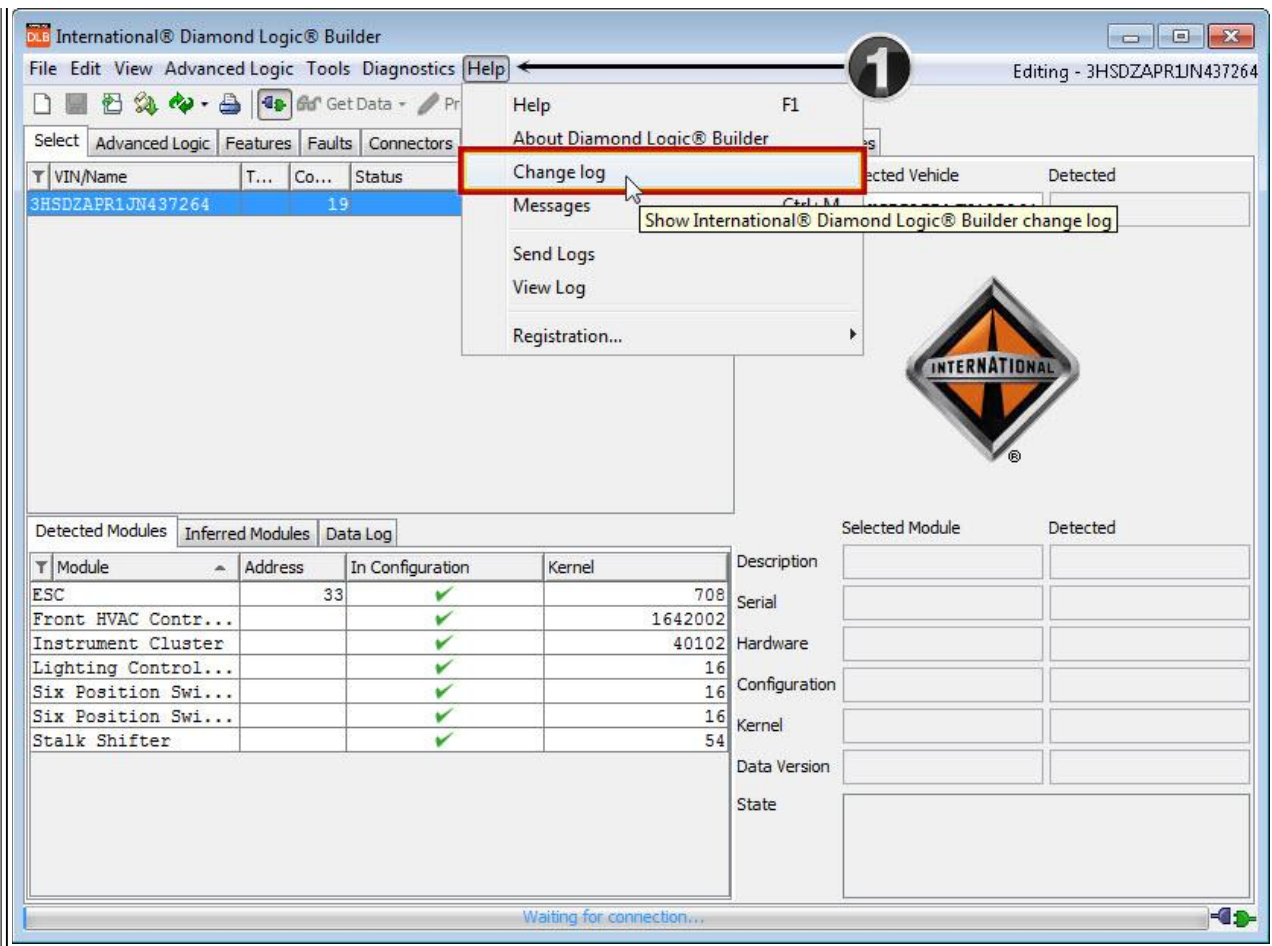
The information below will guide you through updating multiple modules using DLB software. You will need to ensure the DLB Version you are using is updated and current. You can perform a multi-module update, or program modules individually as needed.

Repair Steps Table of Contents
<ul style="list-style-type: none"> <li>• <a href="#">Verify DLB Version</a></li> <li>• <a href="#">Update Multiple Modules</a></li> <li>• <a href="#">Update Single Module</a></li> </ul>

### Checking to ensure Diamond Logic® Builder has updated to the most current version

1. DLB should automatically update when it is opened, and the EZ-Tech® is connected to the internet
  - It is possible your companies' internet may prevent DLB from updating
  - Open the DLB Change Log and verify your DLB version





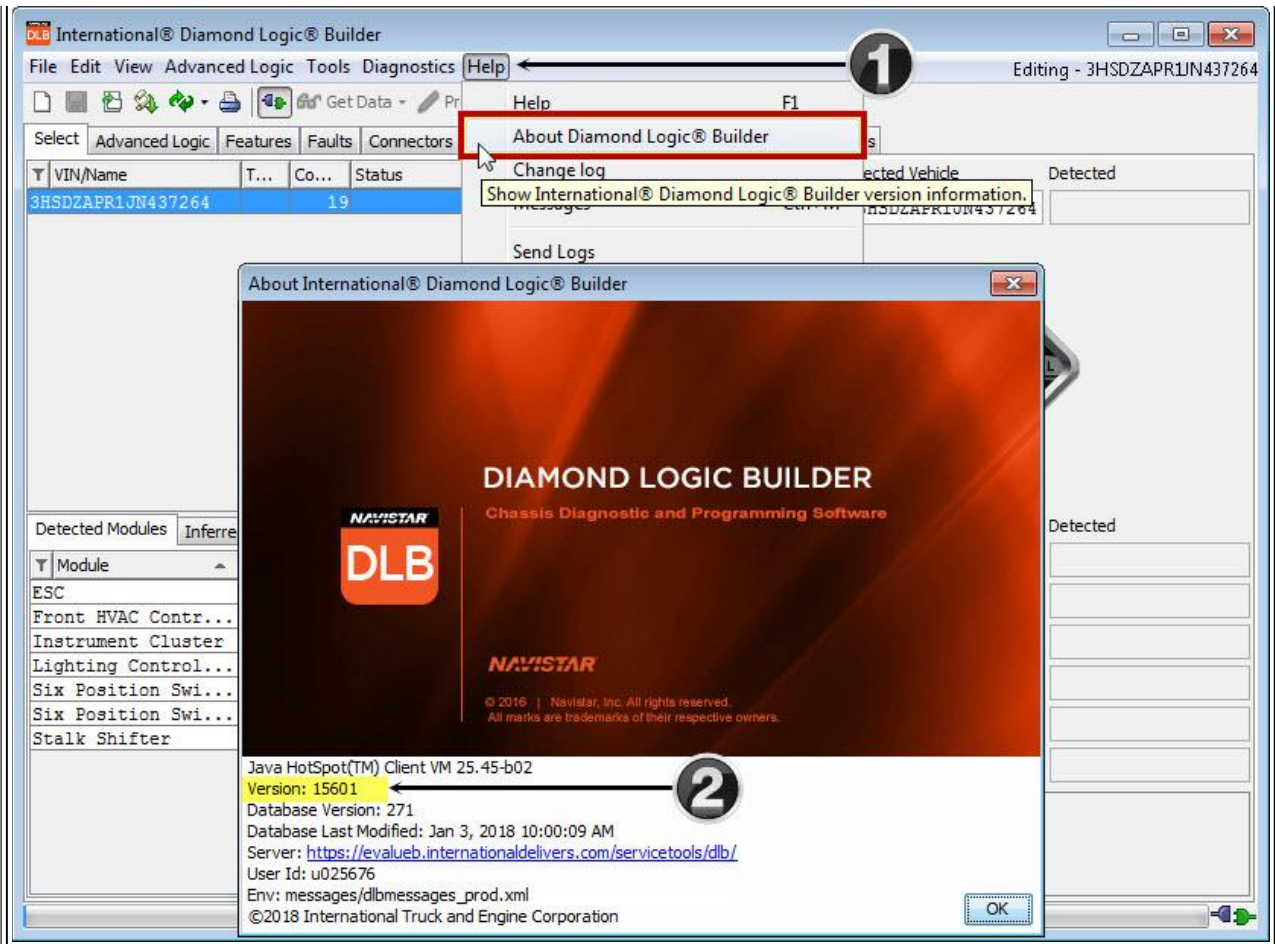
Help Menu - Click on Change Log

**NOTE:**

You can also access the DLB Change Log by [Clicking Here](#)

2. Access the Help Menu - Click on About Diamond Logic® Builder
3. A pop-up box will appear and display the DLB information
  - Reference the Version information that is displayed

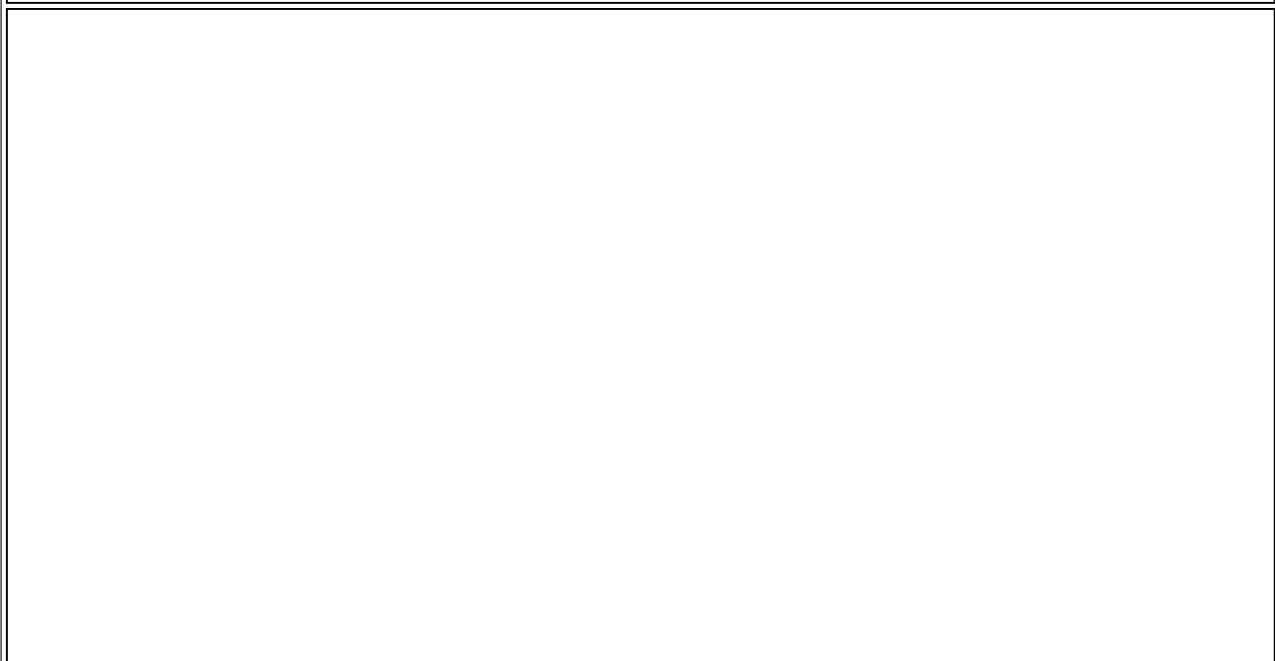
**Figure 2 - About Diamond Logic Builder - Check Version**



1. Help Menu - Click on About Diamond Logic® Builder
2. Version Information

4. Your Version of DLB should match the most recent Version displayed on the DLB Change Log

**Figure 3 - DLB Change Log Example**



The screenshot shows a web browser window with the URL <https://www.navistarservicesoftware.com/index.php/dlb-change-log/>. The page title is "DLB Change Log | Navistar...". The navigation menu includes "Chassis", "Engine", "Support", and "How to Buy". The main content area is titled "DLB Change Log" and lists several updates:

- Database Version 271 (Release Date: 12/30/2017)**
- Diamond Logic Builder 15601 (Release Date: 12/14/2017)** (highlighted in yellow)
  - Resolve issue with the cruise indicator and battery warning lights
- Diamond Logic Builder 15596 (Release Date: 12/14/2017)**
  - Force a reattach sequence after flashing Horn
- Diamond Logic Builder 15595 (Release Date: 12/14/2017)**
  - Support programming of #
  - Support DTC clearing
  - Improve prog
  - Improv
- Diamond Logic Builder 15594 (Release Date: 08/25/2017)**
  - Reduce
  - Additional graphics added for LT trucks

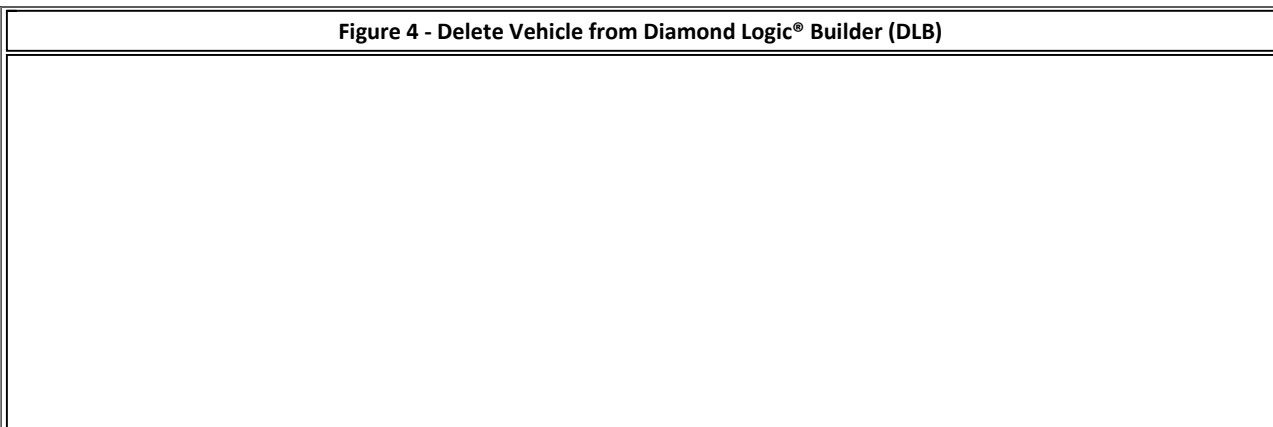
A diagonal callout box with a white background and black border contains the text: "Example of DLB Change Log. You must access the website to verify the most current version." Below the screenshot, there is a bullet point: "◦ Example of DLB Change Log Website - [Click Here](#) to access website".

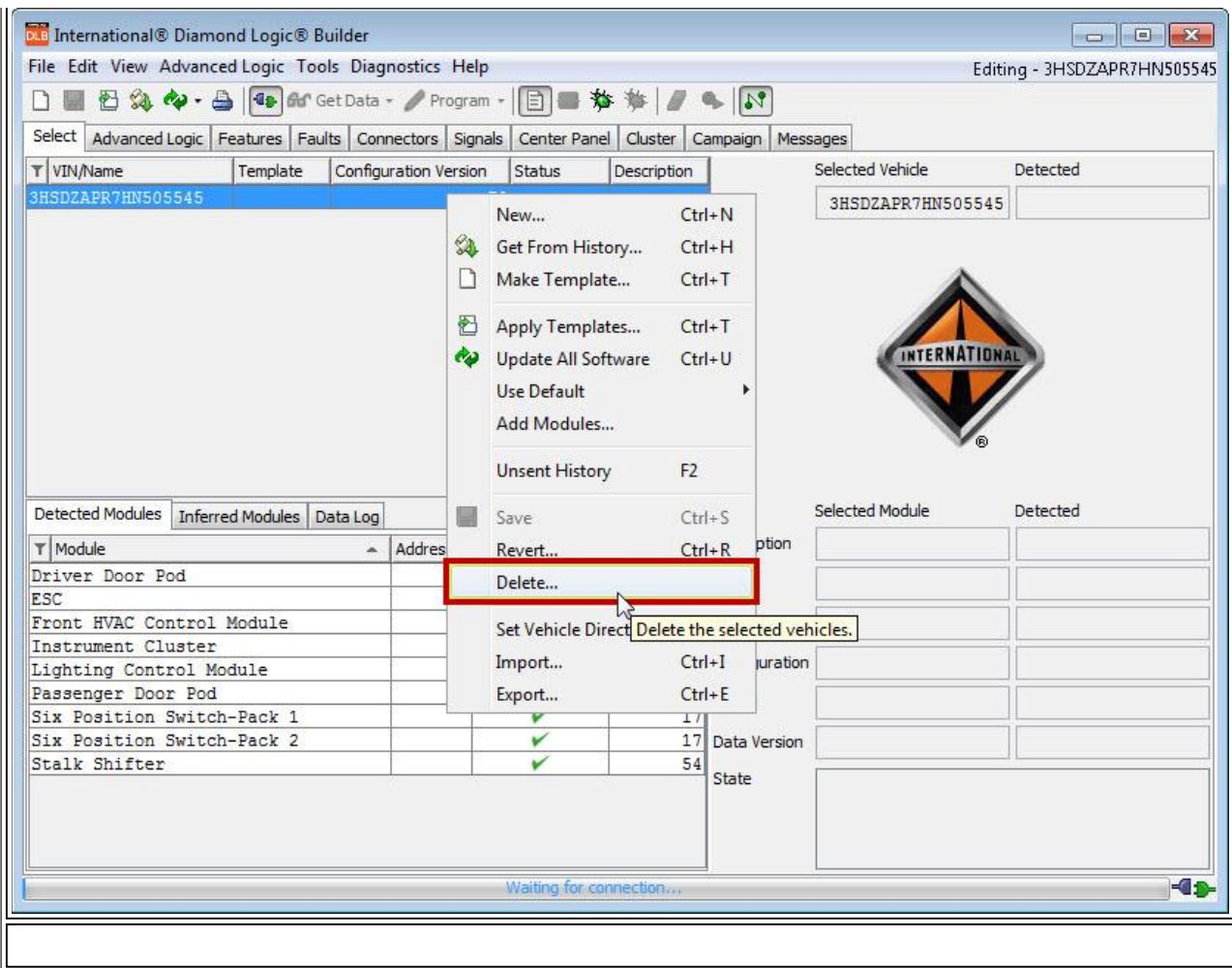
5. Connect to the Body Control Module (BCM) using DLB with the Key OFF
  - You may need to select the com link you are using from the Tools menu

( [Return to Repair Steps Table of Contents](#) )

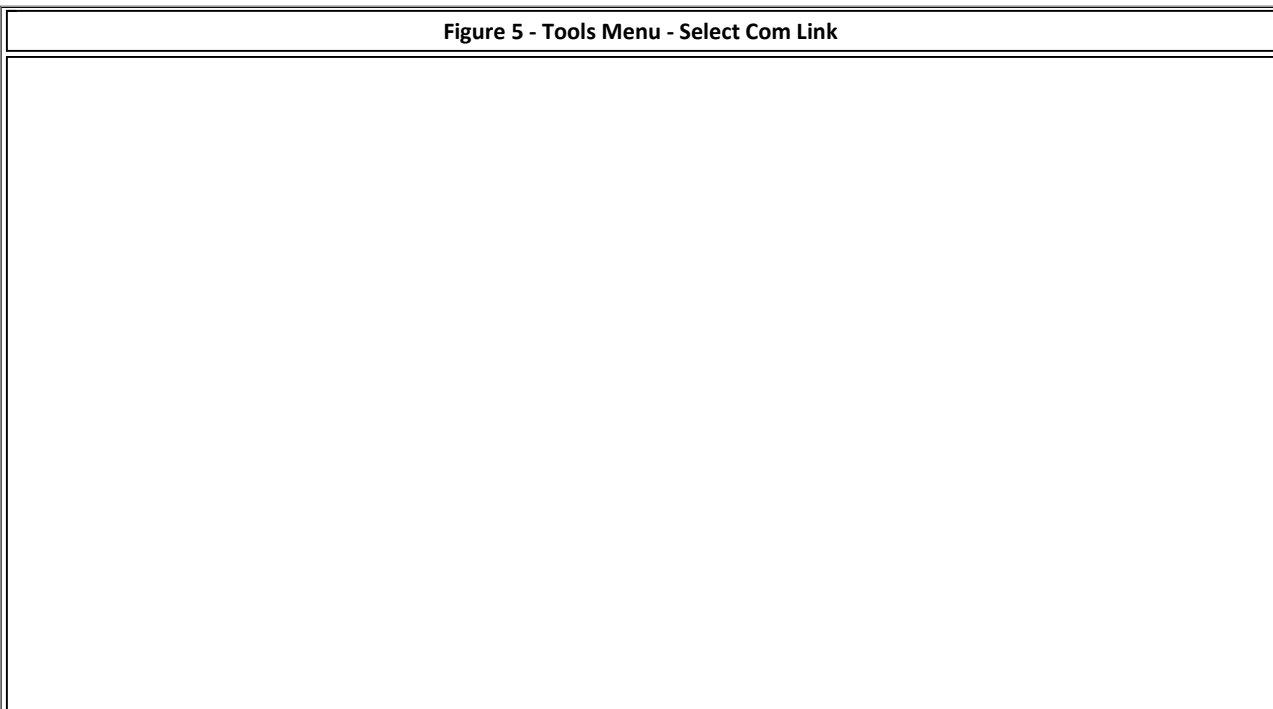
**Program multiple modules using the 'Program All' option**

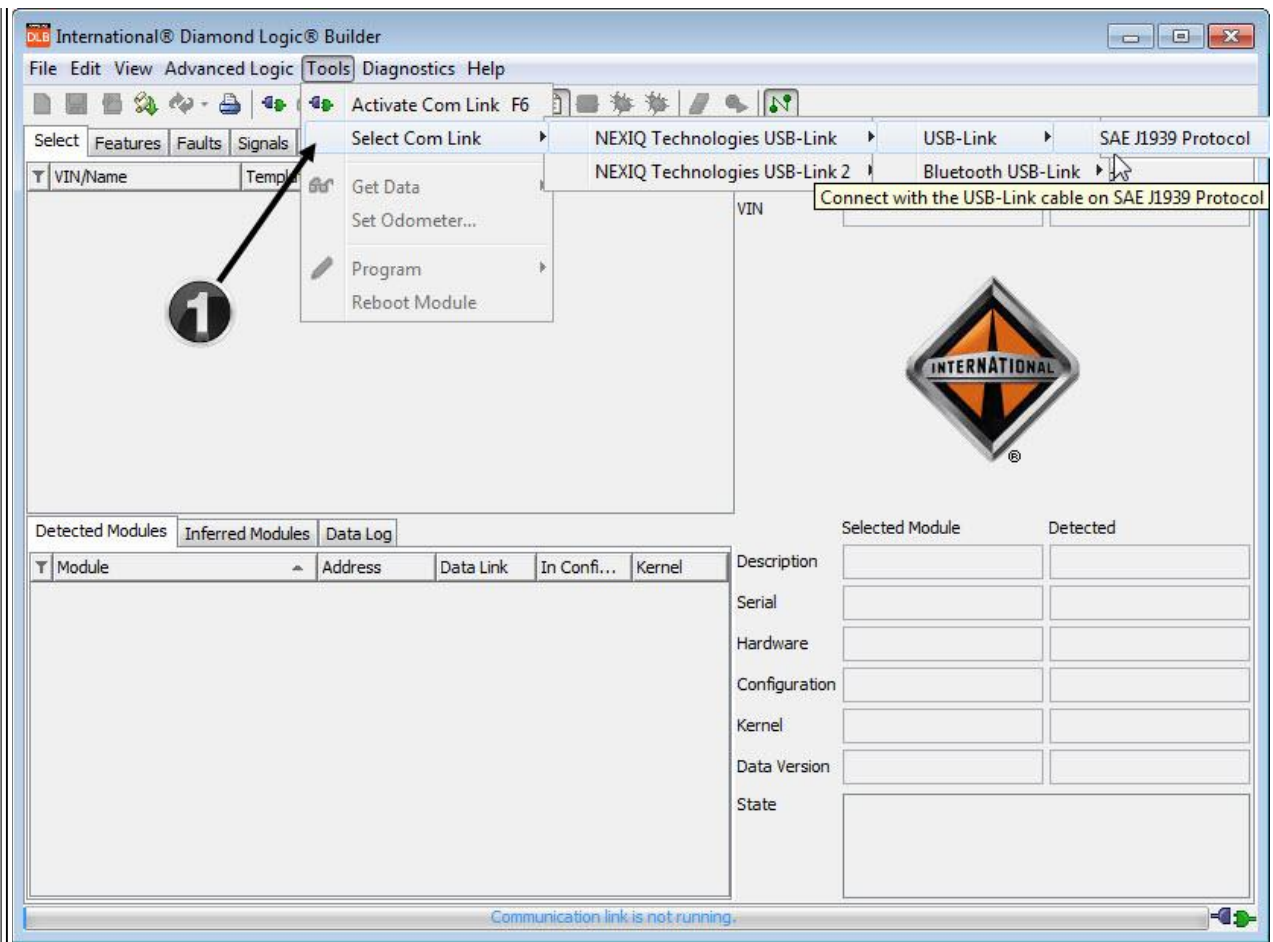
1. Prior to connecting to the vehicle, DELETE the VIN from DLB if you've ever been connected to the vehicle you're preparing to program
  - This step needs to be performed PRIOR to connecting to the vehicle





2. Connect to the Body Control Module (BCM) using DLB with the Key OFF
  - You may need to select the com link you are using from the Tools menu





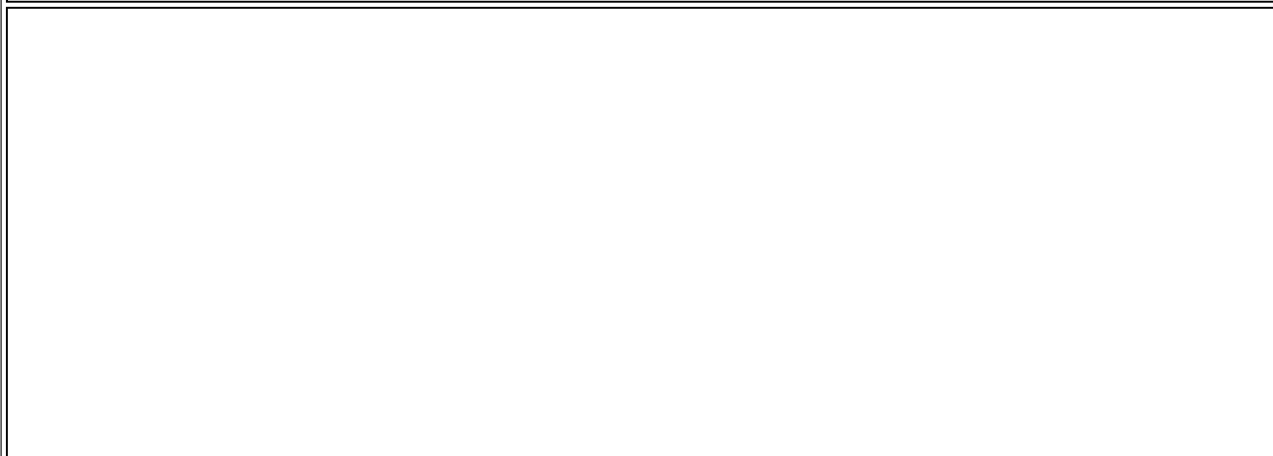
1. Select the appropriate Com Link

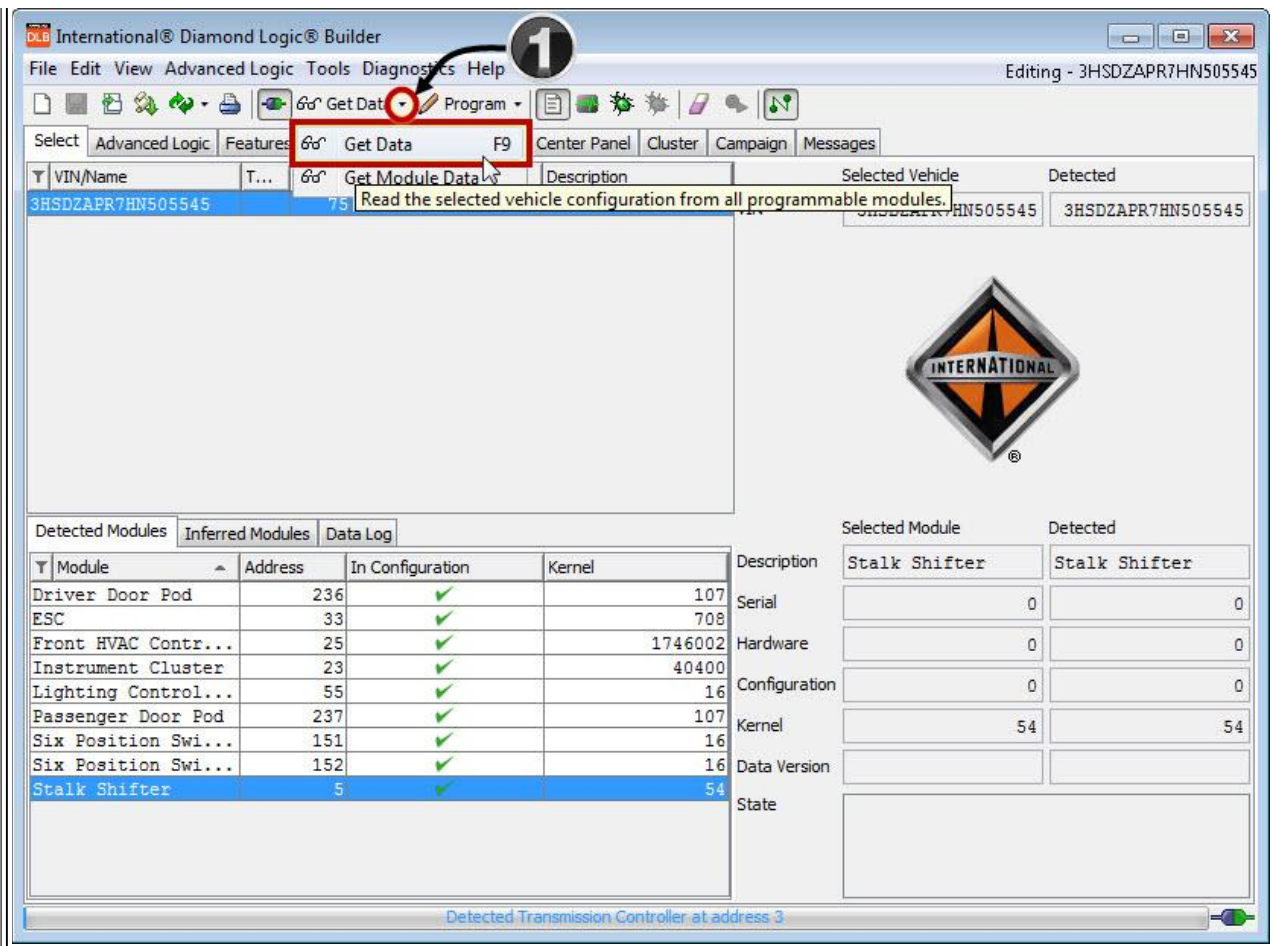
**NOTE:**

Notice no VIN is displayed. The VIN for the vehicle you are preparing to program should have been deleted prior to connecting

3. Turn the Key ON
4. Get Data from the Programmable Modules
  - This will ensure the information displayed in DLB is accurate

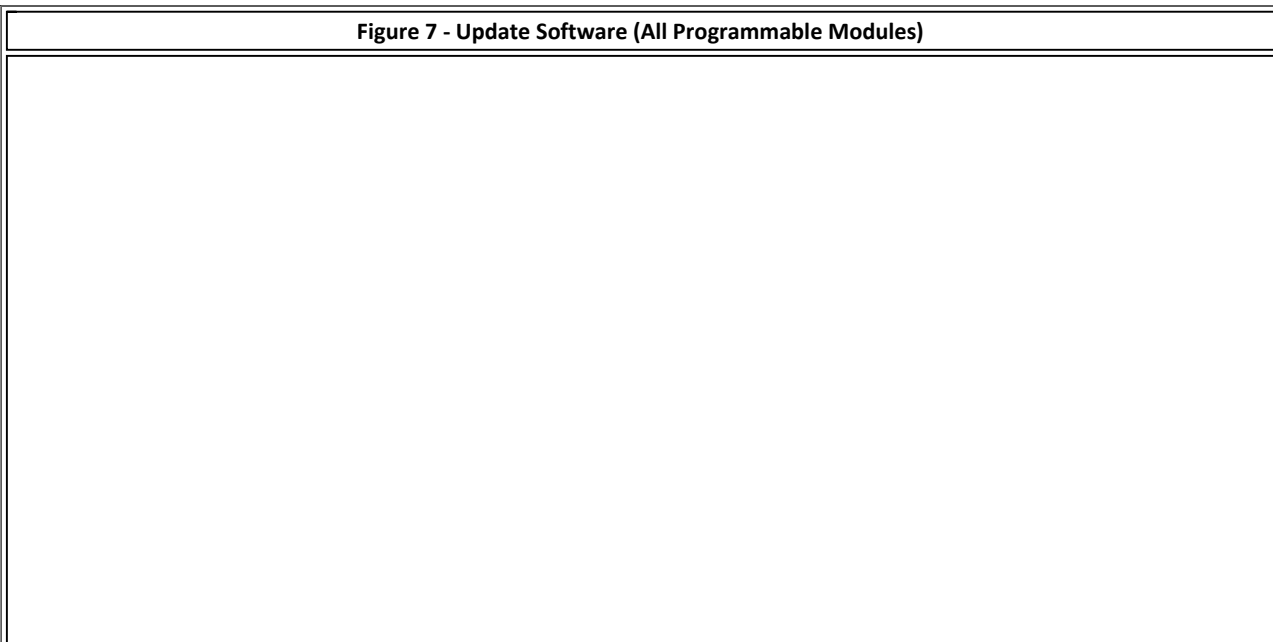
**Figure 6 - Get Module Data (All Programmable Modules)**

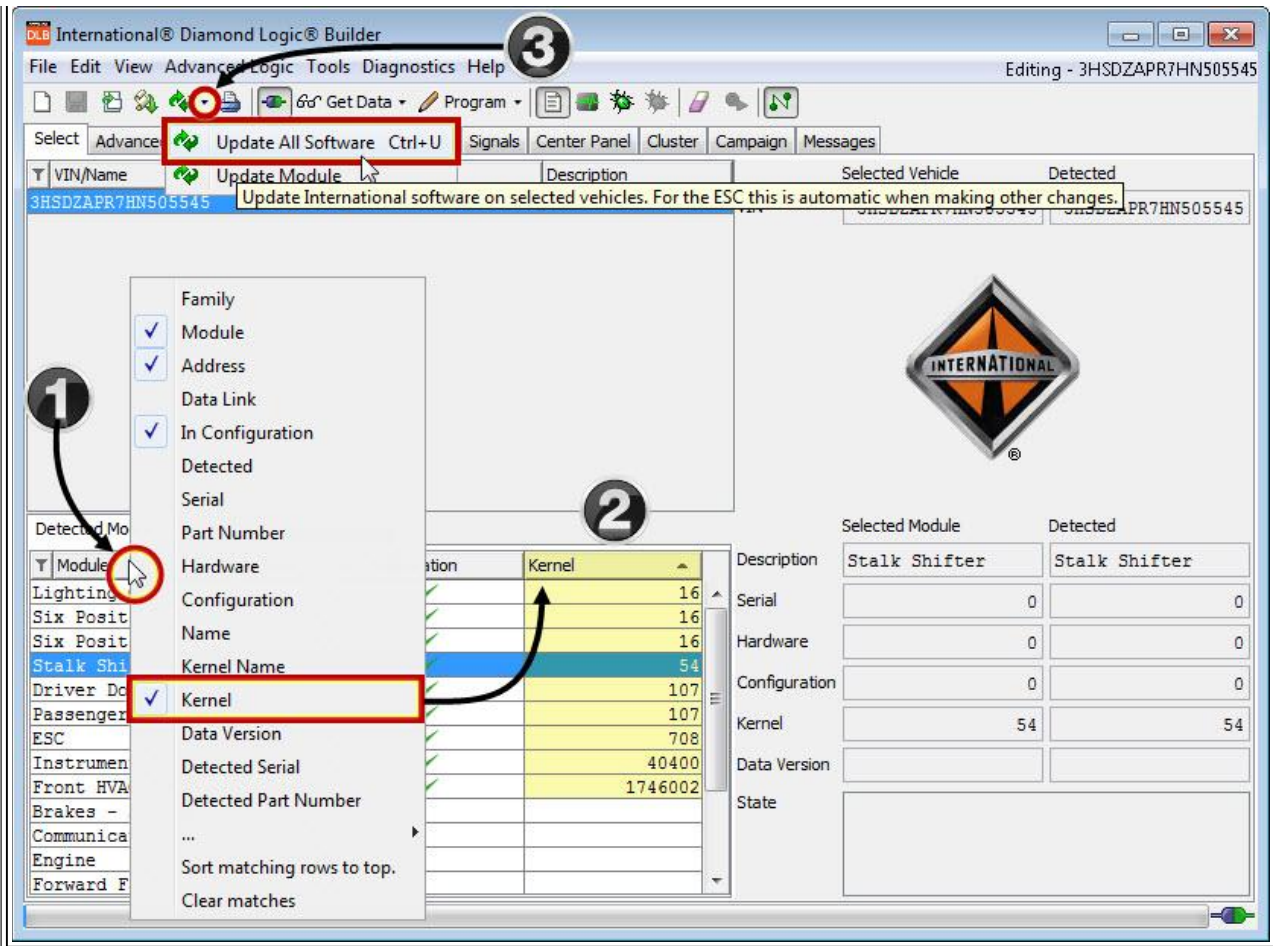




1. Get Data drop down Icon
  - Click on 'Get Data'
  - This will read the current data from all modules that can be programmed using DLB

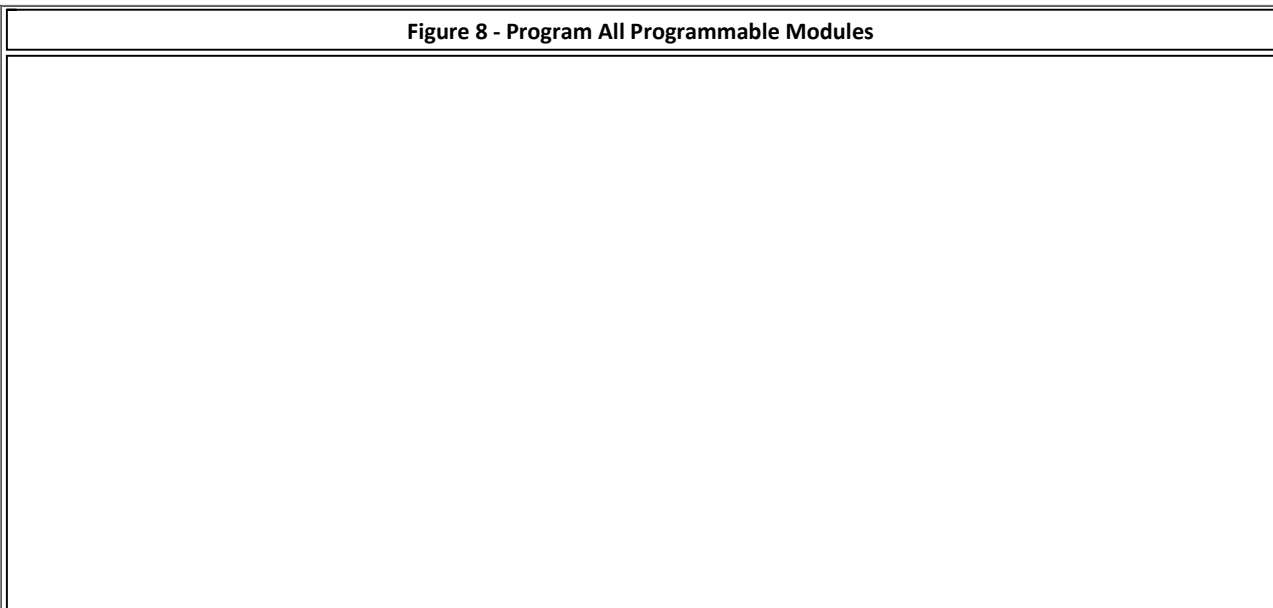
5. Update All Software
  - Any available software will be applied to the programmable modules

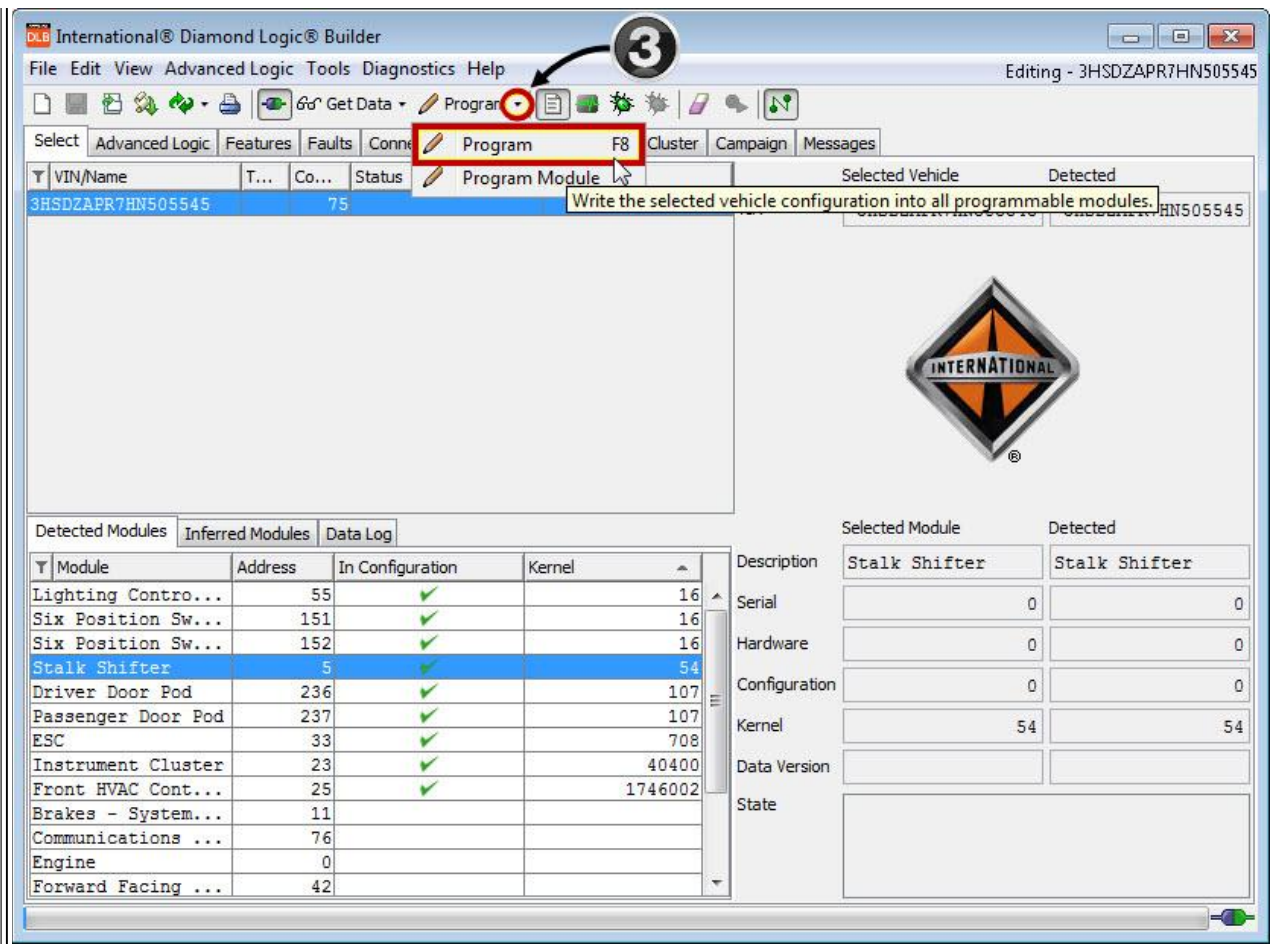




1. Right Click on the Title Row and select Kernel if it is not already selected
2. This will show the Kernel version for the programmable modules
3. Update Software drop down Icon
  - Select Update All Software
  - This will update the Kernel version for DLB Programmable Modules if available

6. Program - This will program all modules that were updated in the previous step





#### 1. Program drop down Icon

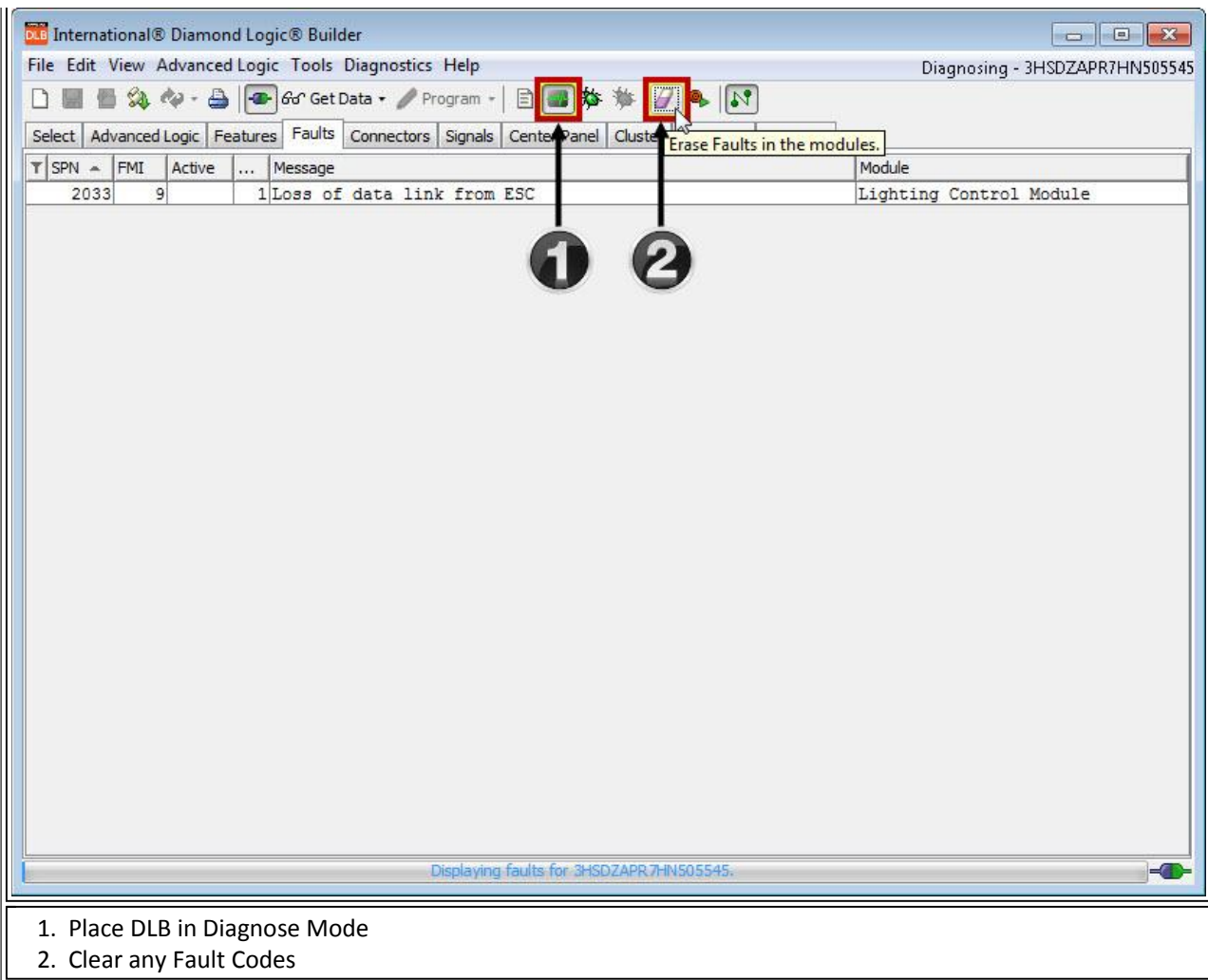
- This will program all modules that have newer software available and could include:
  - Body Control Module
  - Instrument Cluster
  - Lighting Control Module
  - Six Position Switch-Packs
  - Stalk Shifter
  - Front HVAC Control Module
- Programming could take up to 45 minutes depending on how many modules are being programmed

#### NOTE:

**Ensure the laptop is plugged in and the vehicle is connected to a smart charger during programming to maintain proper voltage**

- After all programming is complete, place DLB in Diagnose Mode
- Navigate to the Fault Tab
- Clear any faults that may have occurred during the programming process

**Figure 9 - Clear Fault Codes**

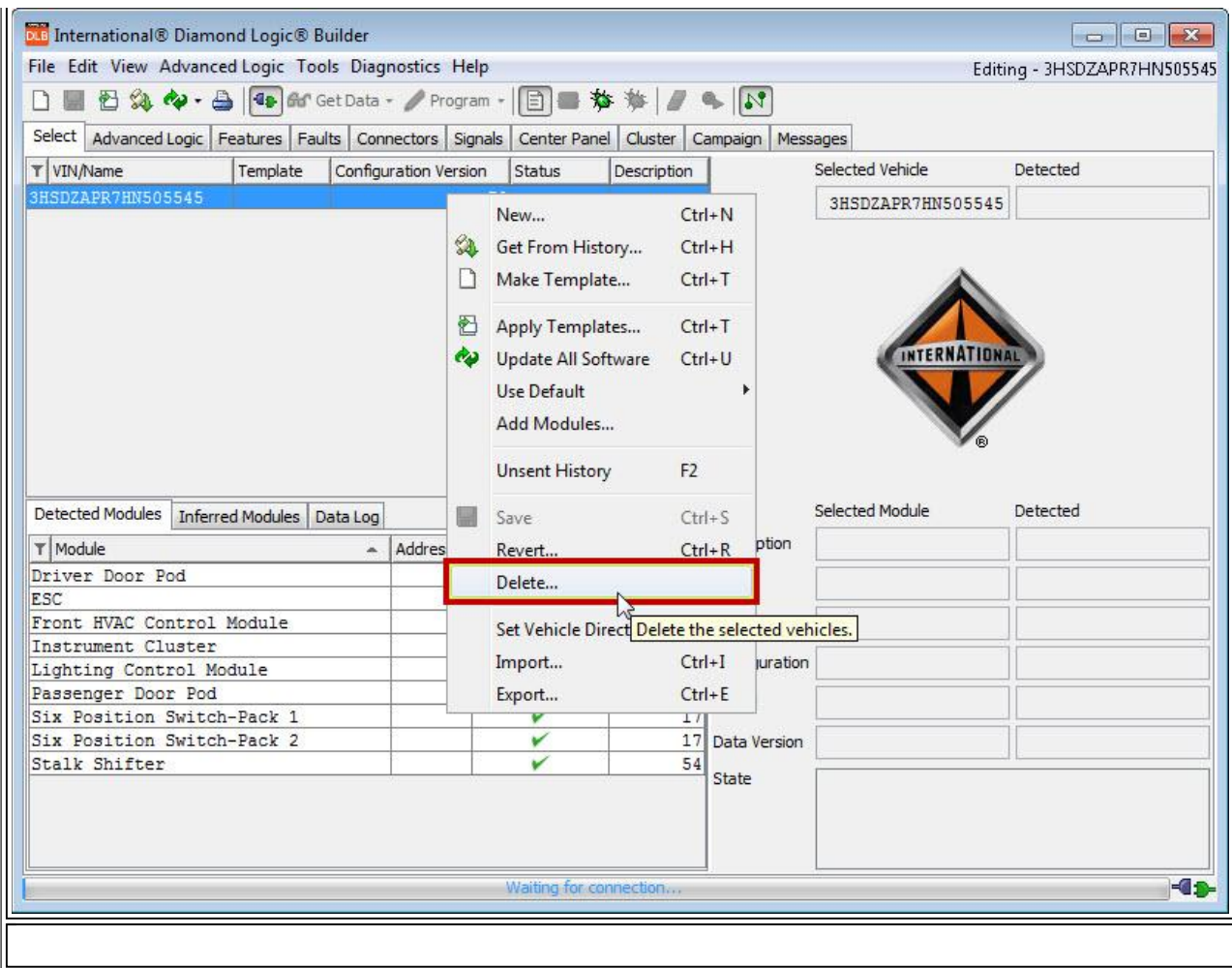


( [Return to Repair Steps Table of Contents](#) )

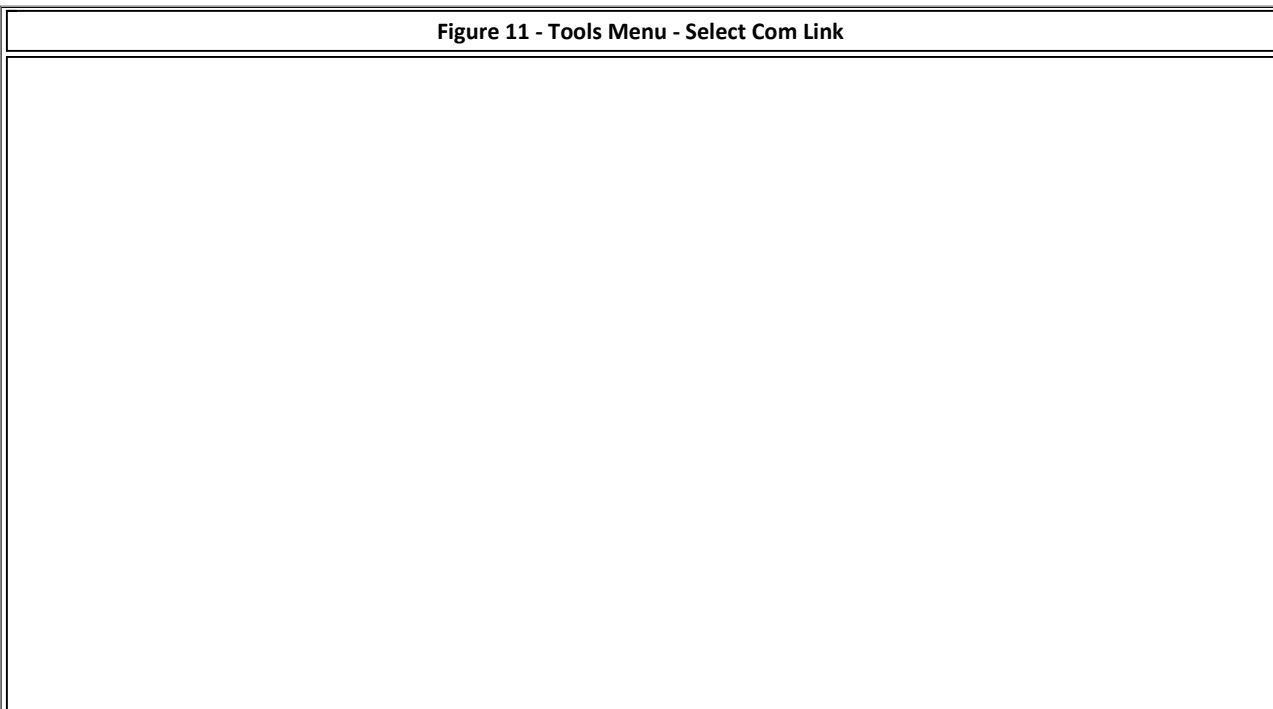
### Program a Single Module Individually

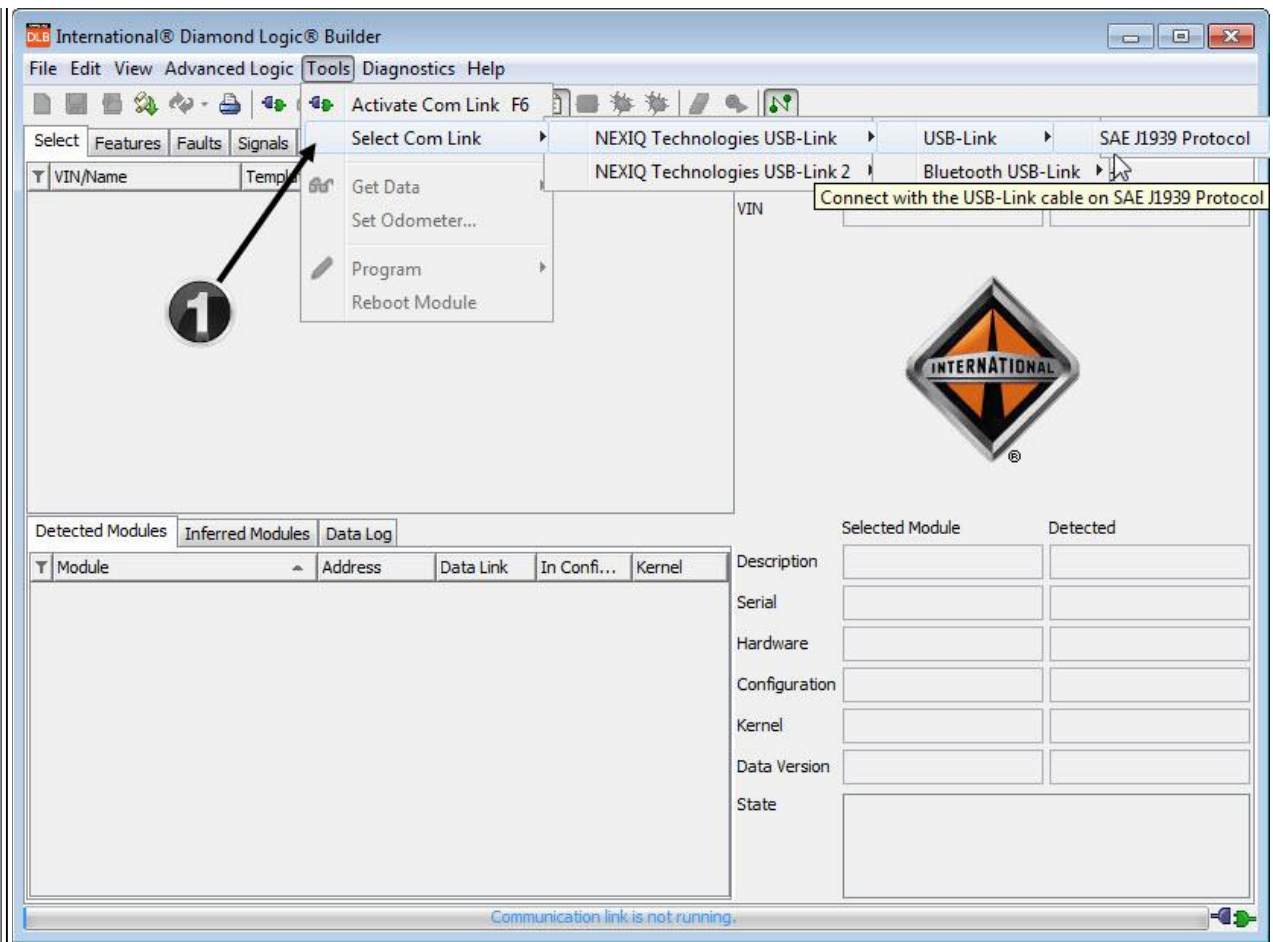
1. Prior to connecting to the vehicle, DELETE the VIN from DLB if you've ever been connected to the vehicle you're preparing to program
  - This step needs to be performed PRIOR to connecting to the vehicle

**Figure 10 - Delete Vehicle from Diamond Logic® Builder (DLB)**



2. Connect to the Body Control Module (BCM) using DLB with the Key OFF
  - You may need to select the com link you are using from the Tools menu





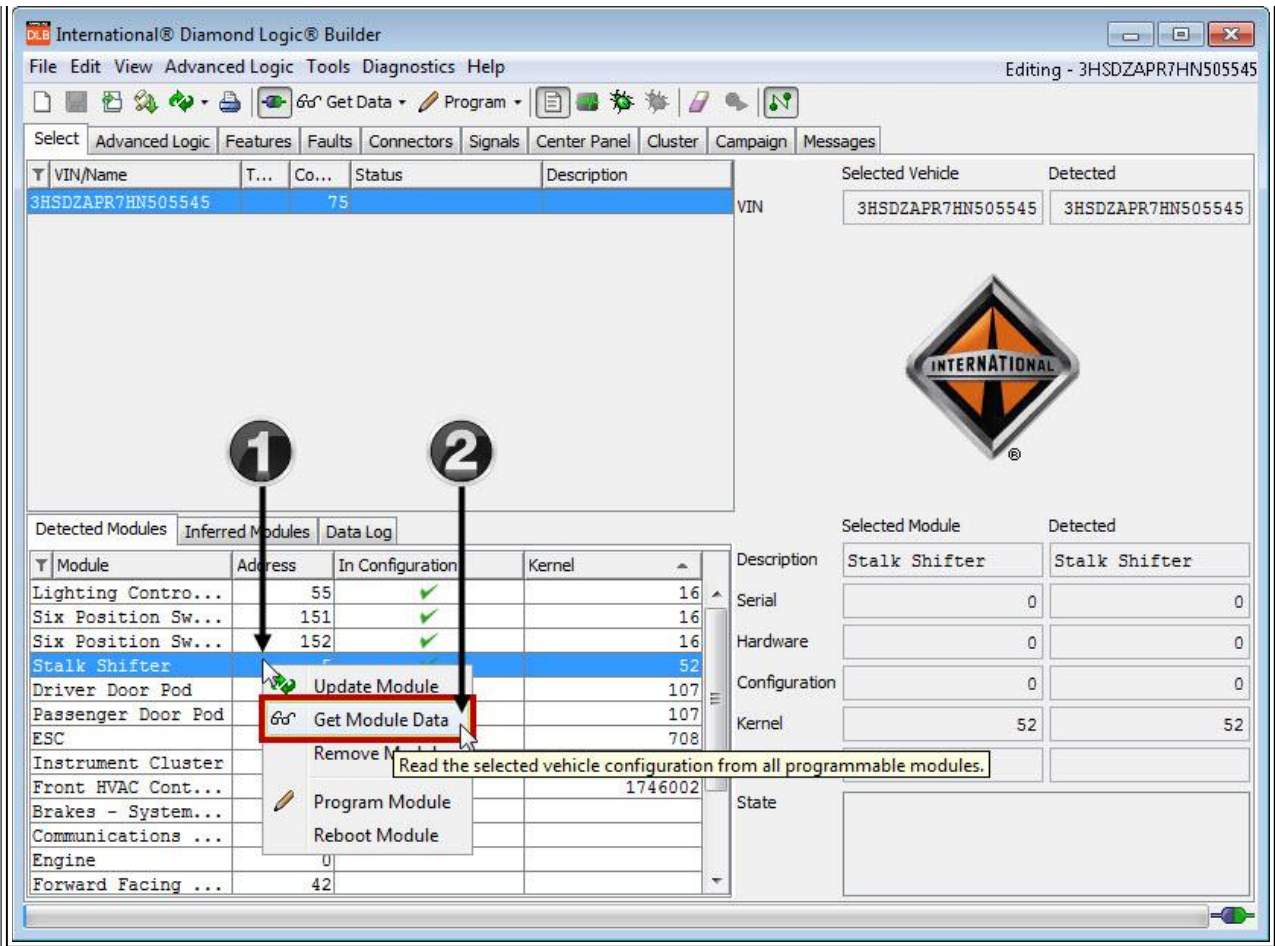
1. Select the appropriate Com Link

**NOTE:**

Notice no VIN is displayed. The VIN for the vehicle you are preparing to program should have been deleted prior to connecting

3. Turn the Key ON
4. Get Data from the module you want to update
  - This will ensure the information displayed in DLB is accurate

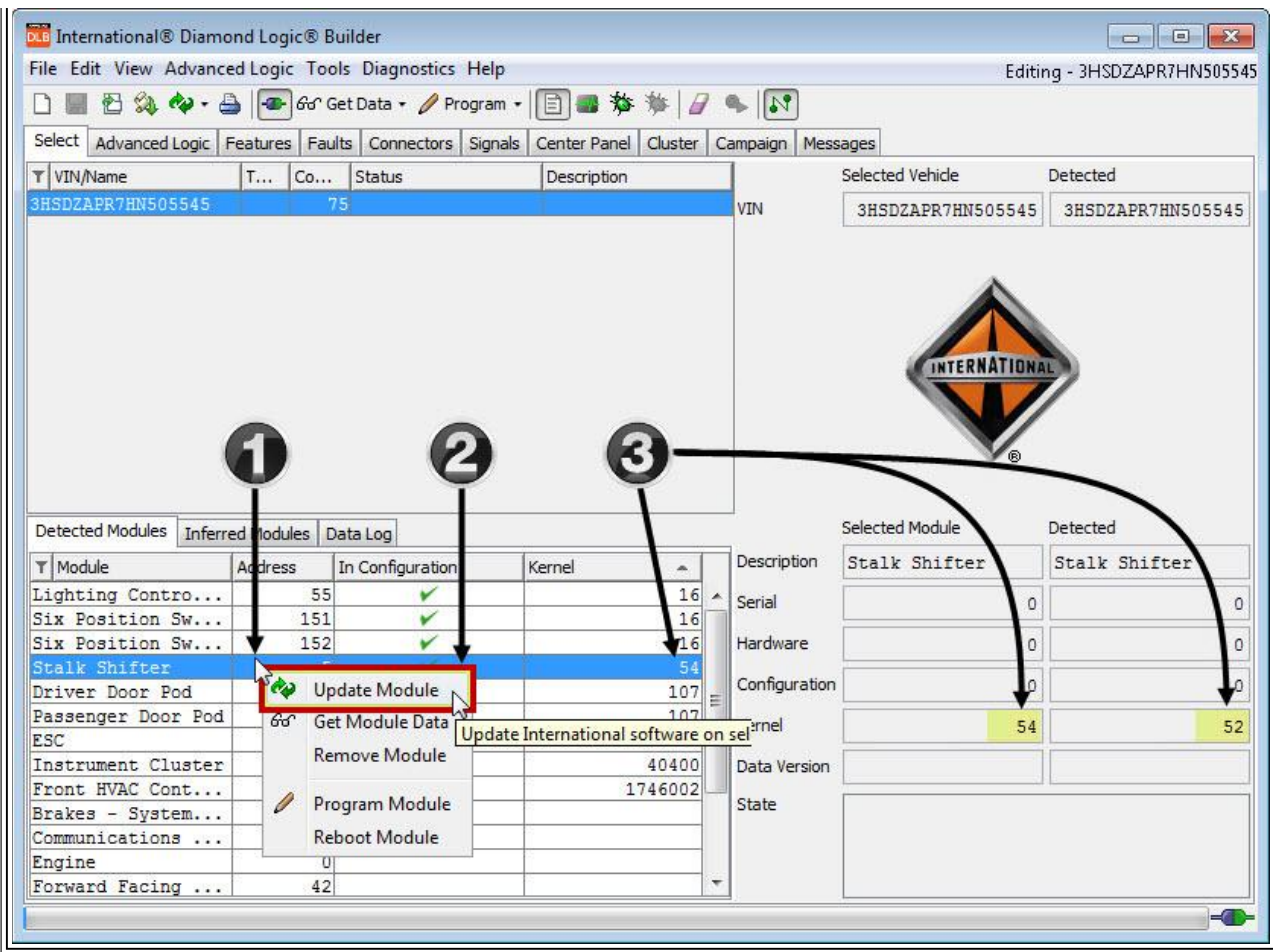
**Figure 12 - Get Module Data for a Single Module**



1. Right Click on the Module you are going to Program
2. Click on Get Module Data

5. Update Software for the Module you are programming

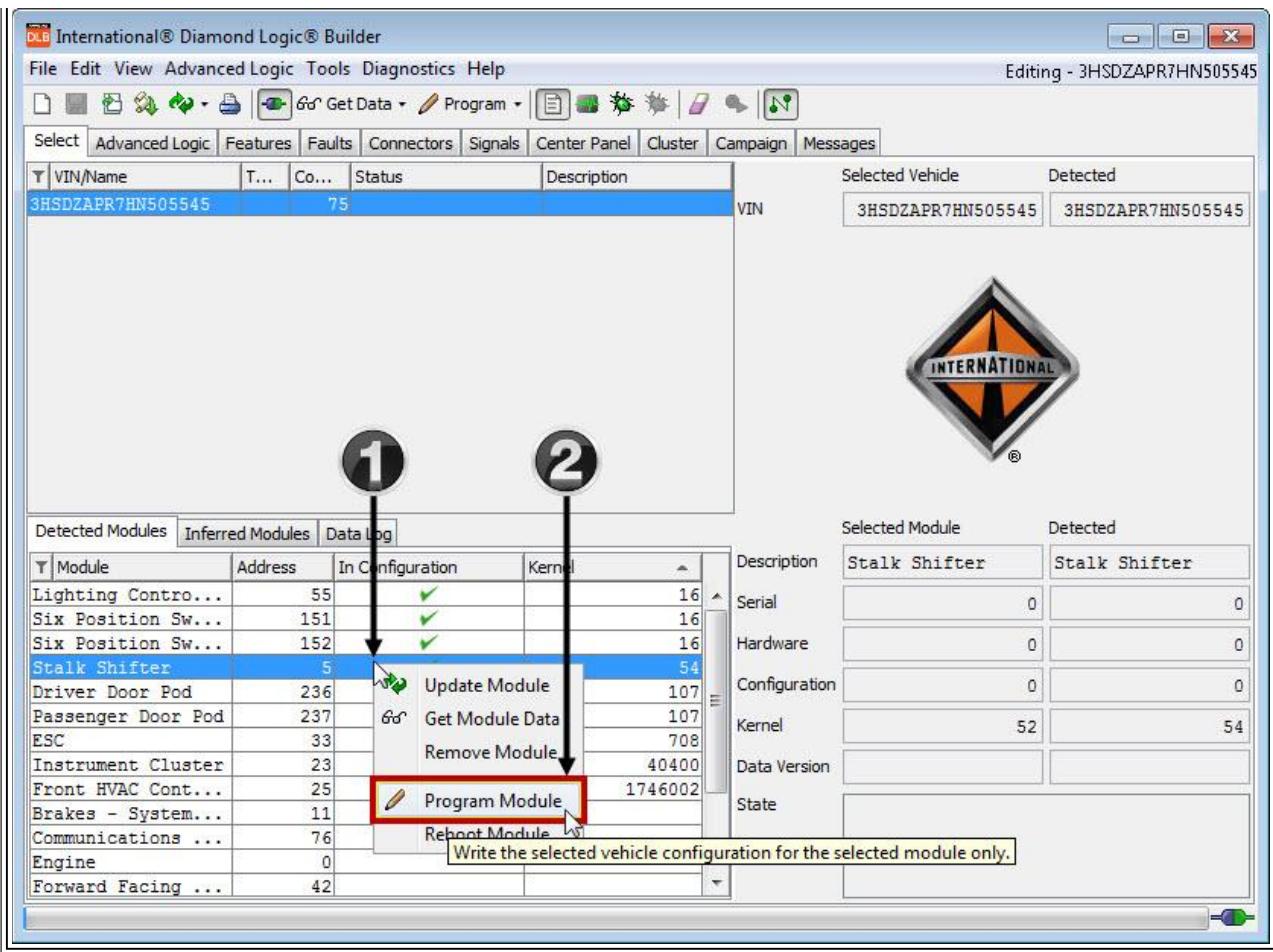
Figure 13 - Update Module for a Single Module



1. Right Click on the Module you are updating
2. Click on Update Module
3. The Kernel version will update if newer software is available

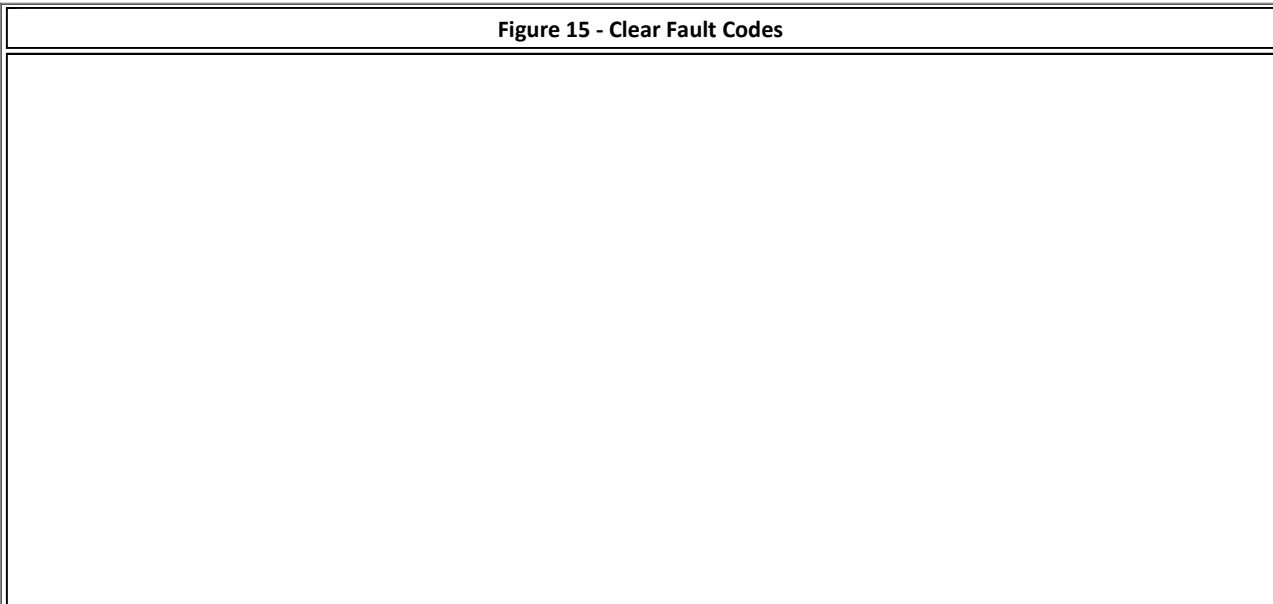
6. Program the Single Module you have updated
  - Only the single module will program

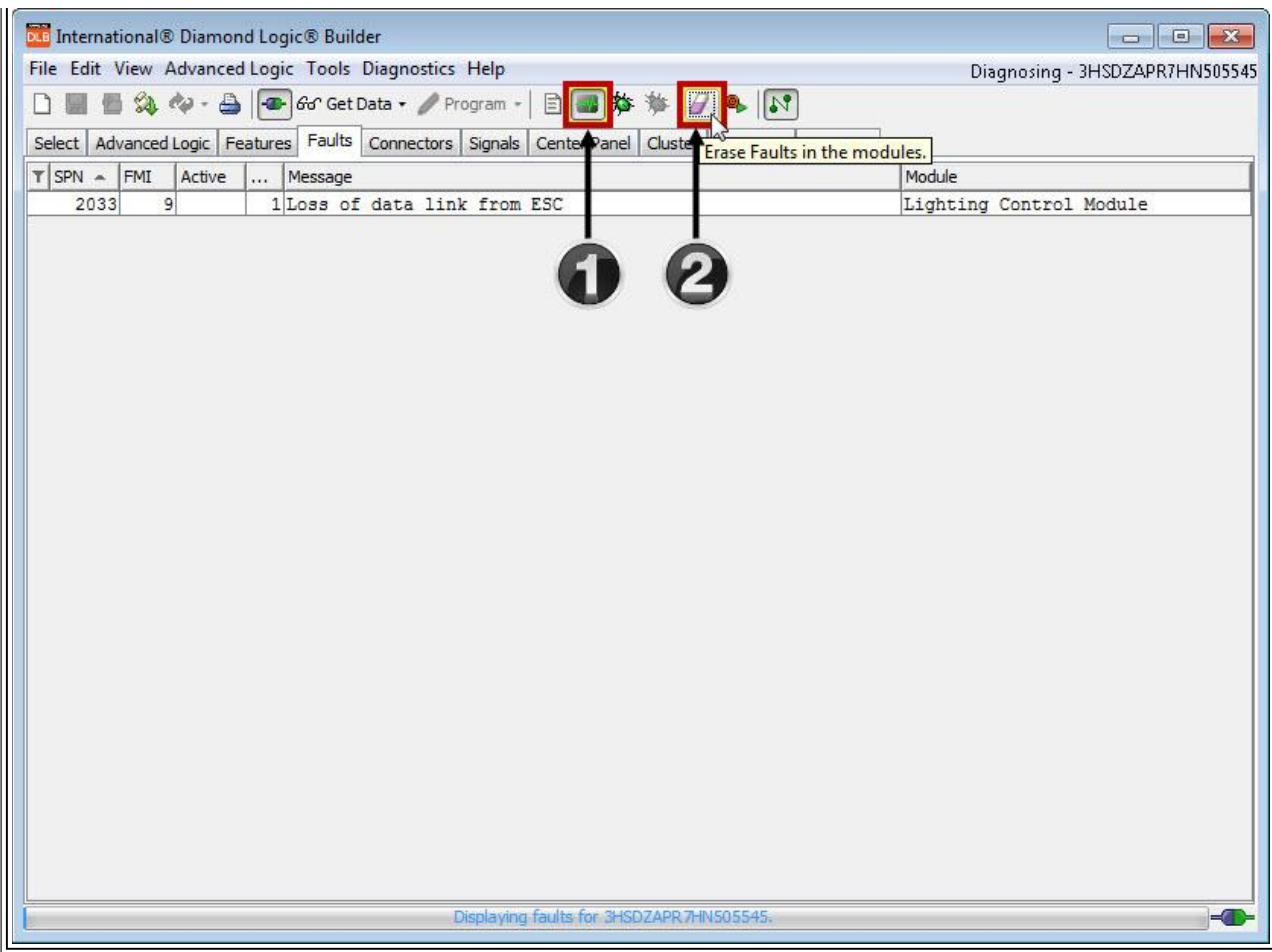
Figure 14 - Program Single Module



1. Right Click on the Module you are updating
2. Click on Program Module
  - Only the selected Module will be programmed

7. After the Module has programmed, place DLB in Diagnose Mode
8. Navigate to the Fault Tab
9. Clear any faults that may have occurred during the programming process





The screenshot shows the International Diamond Logic Builder (DLB) interface. The title bar reads 'International® Diamond Logic® Builder' and 'Diagnosing - 3HSDZAPR7HN505545'. The menu bar includes 'File', 'Edit', 'View', 'Advanced Logic', 'Tools', 'Diagnostics', and 'Help'. Below the menu bar is a toolbar with icons for 'Get Data', 'Program', and 'Erase Faults in the modules'. The main window displays a table of faults:

SPN	FMI	Active	...	Message	Module
2033	9			1 Loss of data link from ESC	Lighting Control Module

Two callouts, labeled '1' and '2', point to the 'Center Panel' and 'Cluster' buttons in the menu bar, respectively. A status bar at the bottom of the window reads 'Displaying faults for 3HSDZAPR7HN505545.'

1. Place DLB in Diagnose Mode
2. Clear any Fault Codes

( [Return to Repair Steps Table of Contents](#) )

## Warranty Information

### Warranty Claim Coding:

Refer to the [Warranty Coding Manual](#) for Group and Noun Codes.

### Standard Repair Time(s):

Refer to the [SRT Manual](#) for Repair Times

## Other Resources

[Master Service Information Site](#)

 Hide Details

#### Feedback Information

Viewed: 1507  
 Helpful: 2  
 Not Helpful: 0

No Feedback Found



Copyright © 2018 Navistar, Inc.