

**MODEL:** Karma Revero**DATE:** May 2018**TITLE:** Exhaust Adjustment**First Release****PRIORITY:** On Complaint**APPLICABILITY:** MY17 and MY18 Revero**MARKET REGION:** North America**PURPOSE:** On complaint of a rattle or noise coming from the dash area.

When presented with a left side dash rattle noise, inspection of the exhaust hanger and the EBCM bracket should be performed. The two parts should be installed with a visible gap measuring 2-5mm (fig.1). If these parts are contacting one another, a vibration may be felt and heard in the passenger compartment.

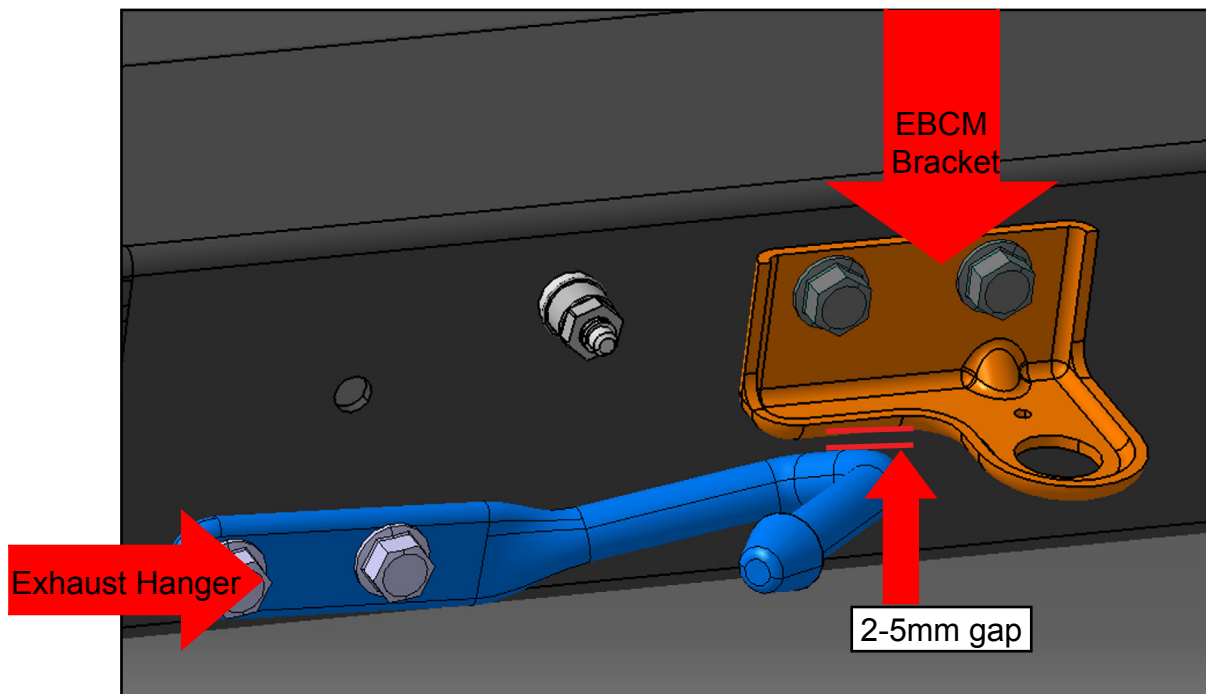


fig.1

Karma Automotive Bulletins and service documents are intended for use by experienced and trained Technicians. If you lack the skills, tools, equipment and a suitable workshop for any procedure described in this document, we suggest you leave such repairs to a Karma retailer and service provider. See your service provider for advice on whether your vehicle may benefit from the information contained within this document. The information contained in the Karma Bulletin is accurate at the date of publication. However, Karma Automotive regularly updates technical information. Please check with your Karma Automotive Retailer and Karma Automotive service provider that the bulletin you intend to use contains the latest available information.

**MODEL:** Karma Revero

**DATE:** May 2018

**TITLE:** Exhaust Adjustment

**First Release**

Out of specification or insufficient clearance and contact, of the two components is shown in (fig.2a, 2b). This may contribute to a passenger compartment “dash rattle”.



fig 2a

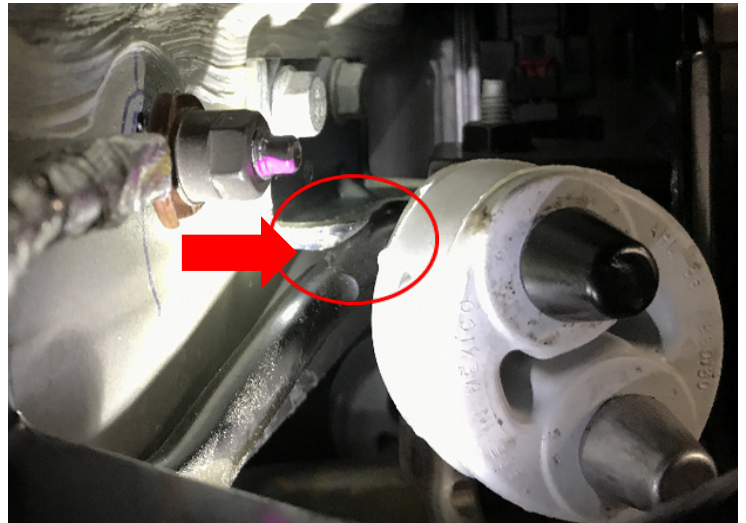


fig. 2b

Proper clearance between the two parts, the exhaust hanger and EBCM bracket is shown (fig.2c).



fig. 2c

Karma Automotive Bulletins and service documents are intended for use by experienced and trained Technicians. If you lack the skills, tools, equipment and a suitable workshop for any procedure described in this document, we suggest you leave such repairs to a Karma retailer and service provider. See your service provider for advice on whether your vehicle may benefit from the information contained within this document. The information contained in the Karma Bulletin is accurate at the date of publication. However, Karma Automotive regularly updates technical information. Please check with your Karma Automotive Retailer and Karma Automotive service provider that the bulletin you intend to use contains the latest available information.

MODEL: Karma Revero

DATE: May 2018

TITLE: Exhaust Adjustment

First Release

To correct the clash condition, removal of the exhaust muffler to expose the bracket is best practice. When exposed, loosen the bracket and place a large hex wrench or similar tool as a spacer to the EBCM bracket to maintain a clearance as specified above (fig. 3a) when reassembling.

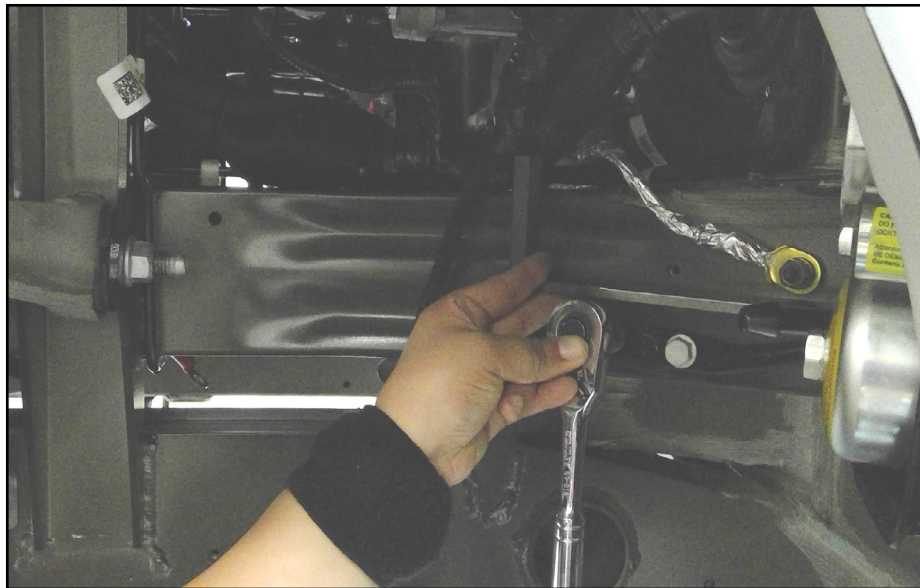


fig. 3a

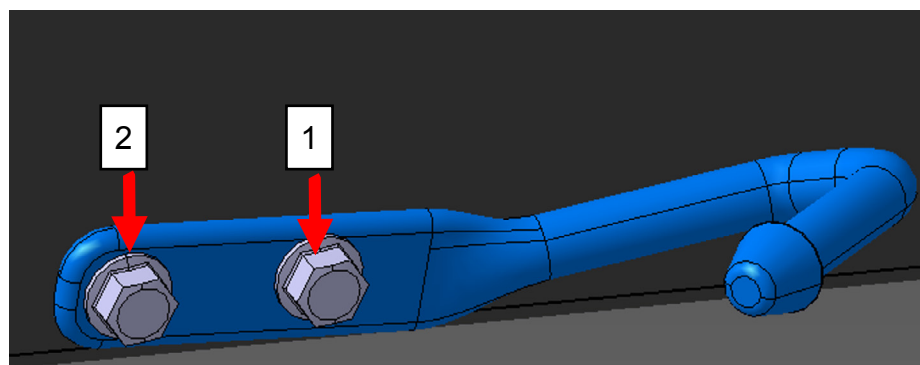


fig. 3b

Torque the fasteners in sequence as shown, torque to  $20 \pm 3.0$  Nm.

Karma Automotive Bulletins and service documents are intended for use by experienced and trained Technicians. If you lack the skills, tools, equipment and a suitable workshop for any procedure described in this document, we suggest you leave such repairs to a Karma retailer and service provider. See your service provider for advice on whether your vehicle may benefit from the information contained within this document. The information contained in the Karma Bulletin is accurate at the date of publication. However, Karma Automotive regularly updates technical information. Please check with your Karma Automotive Retailer and Karma Automotive service provider that the bulletin you intend to use contains the latest available information.

**MODEL:** Karma Revero

**DATE:** May 2018

**TITLE:** Exhaust Adjustment

**First Release**

Should this concern present it self on the passenger side as a dash rattle, address the concern in a similar fashion. The exhaust hanger may be in contact with the vehicle frame (fig 4a and 4b). The remedy is to create a 2-5mm gap from the exhaust and the rail to relieve any interference.



fig. 4a



fig. 4b

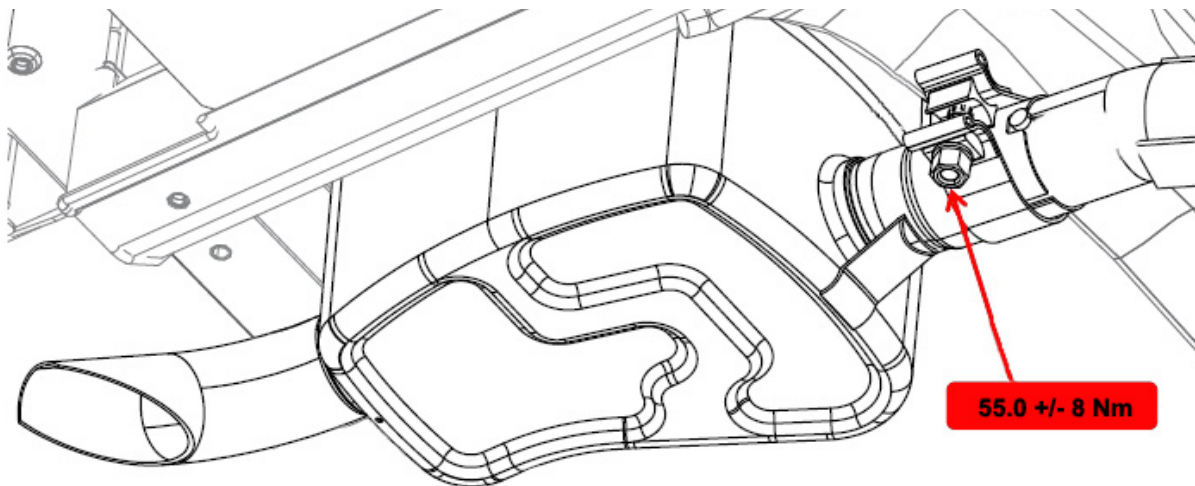


fig. 4c

There should be 9 mm clearance between the frame and the muffler. To aid in realigning this and ensure proper clearance, loosen the connection of the two side mufflers from the center attachments at the same time and realign them to the center muffler. The muffler should hang in the correct position. If the position is found to be correct, tighten the bracket as in (fig 3b.) and tight the driver side as directed above. The center muffer clamp torque is 55.0 +/- 8 Nm (fig. 4c)

Karma Automotive Bulletins and service documents are intended for use by experienced and trained Technicians. If you lack the skills, tools, equipment and a suitable workshop for any procedure described in this document, we suggest you leave such repairs to a Karma retailer and service provider. See your service provider for advice on whether your vehicle may benefit from the information contained within this document. The information contained in the Karma Bulletin is accurate at the date of publication. However, Karma Automotive regularly updates technical information. Please check with your Karma Automotive Retailer and Karma Automotive service provider that the bulletin you intend to use contains the latest available information.



# Technical Service Bulletin

**TB-18-12-02**

**MODEL:** Karma Revero

**DATE:** May 2018

**TITLE:** Exhaust Adjustment

**First Release**

**PARTS REQUIRED:**

PART NUMBER	DESCRIPTION	QUANTITY
N/A		

**SPECIAL TOOLS:**

DESCRIPTION
N/A

**CAUSAL PART:**

PART NUMBER	DESCRIPTION
C131115800102	LF exhaust hanger

**LABOR CODES:**

CODE	DESCRIPTION	TIME	DEFECT CODE
12-80-01-05	LH - Bracket Adjustment	1.6	12-80-01-13

**SUBLET:**

CODE	DESCRIPTION	AMOUNT
N/A		

**WARRANTY DISPOSITION:** This repair is covered under the New Vehicle Limited Warranty, in effect for five (5) years from the in-service date with no mileage limitation.

Karma Automotive Bulletins and service documents are intended for use by experienced and trained Technicians. If you lack the skills, tools, equipment and a suitable workshop for any procedure described in this document, we suggest you leave such repairs to a Karma retailer and service provider. See your service provider for advice on whether your vehicle may benefit from the information contained within this document. The information contained in the Karma Bulletin is accurate at the date of publication. However, Karma Automotive regularly updates technical information. Please check with your Karma Automotive Retailer and Karma Automotive service provider that the bulletin you intend to use contains the latest available information.