

Pre-Delivery Service

Service Category General

Section Pre-Delivery Service

Market USA



Applicability

YEAR(S)	MODEL(S)	ADDITIONAL INFORMATION
2019	NX300, NX300H	

Introduction

This bulletin contains the vehicle specific pre-delivery services for 2019 model year NX 300 and NX 300h vehicles. Additionally, refer to the all applicable Lexus model pre-delivery services for general pre-delivery services to be performed.

Warranty Information

OP CODE	DESCRIPTION	TIME	OFF	T1	T2
N/A	Not Applicable to Warranty	-	-	-	-

Procedures

- Front License Plate and Mounting Bracket Installation 2
- D/C Cut Fuse Installation 6

Pre-Delivery Service

Front License Plate and Mounting Bracket Installation

The front license plate mounting bracket and two self-tapping screws for the 2019 model year NX 300 and NX 300h are stored in the rear cargo area of the vehicle. Install the license plate and mounting bracket during Pre-Delivery Service (PDS).

Installation Procedure

1. Install the mounting bracket.
 - A. Align holes "A" of the mounting bracket with the dimples on the radiator lower grille.

NOTE

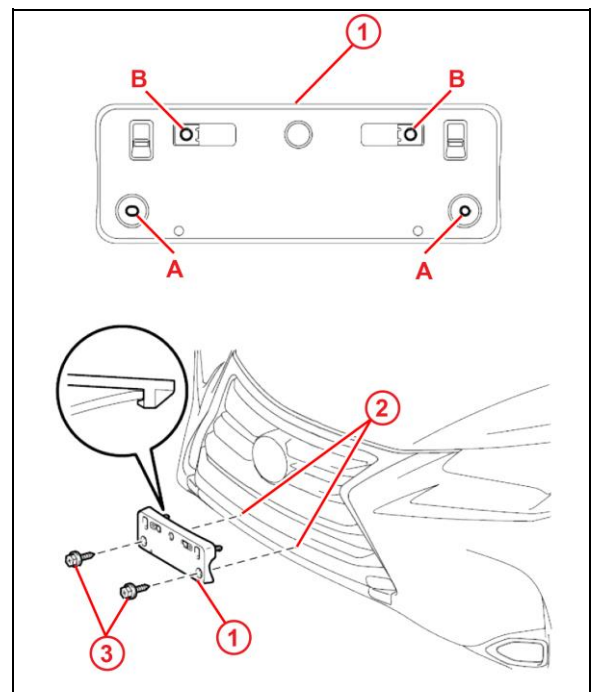
- Holes "A" are used to install the mounting bracket onto the bumper cover.
- Holes "B" are used to install the license plate onto the mounting bracket.

- B. Engage the two clips and screw the two supplied self-tapping screws directly into the dimples to install the front license plate mounting bracket.

NOTICE

- Do NOT pre-drill holes into the dimples on the front bumper cover.
- Do NOT over-tighten the self-tapping screws.

Figure 1.



1	Mounting Bracket
2	Dimple
3	Self-tapping Screw

Pre-Delivery Service

Front License Plate and Mounting Bracket Installation (continued)

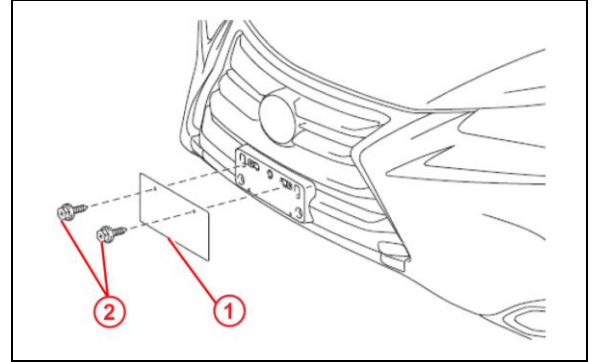
Installation Procedure

2. Install the front license plate onto the mounting bracket using two non-corroding bolts with the following dimensions.

Nominal Length: 15.0 mm (0.59 in.)

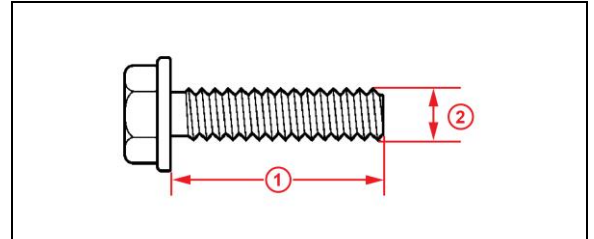
Diameter: 6.0 mm (0.24 in.)

Figure 3.



1	Front License Plate
2	Bolt

Figure 4.



1	Nominal Length
2	Diameter

Pre-Delivery Service

D/C Cut Fuse Installation

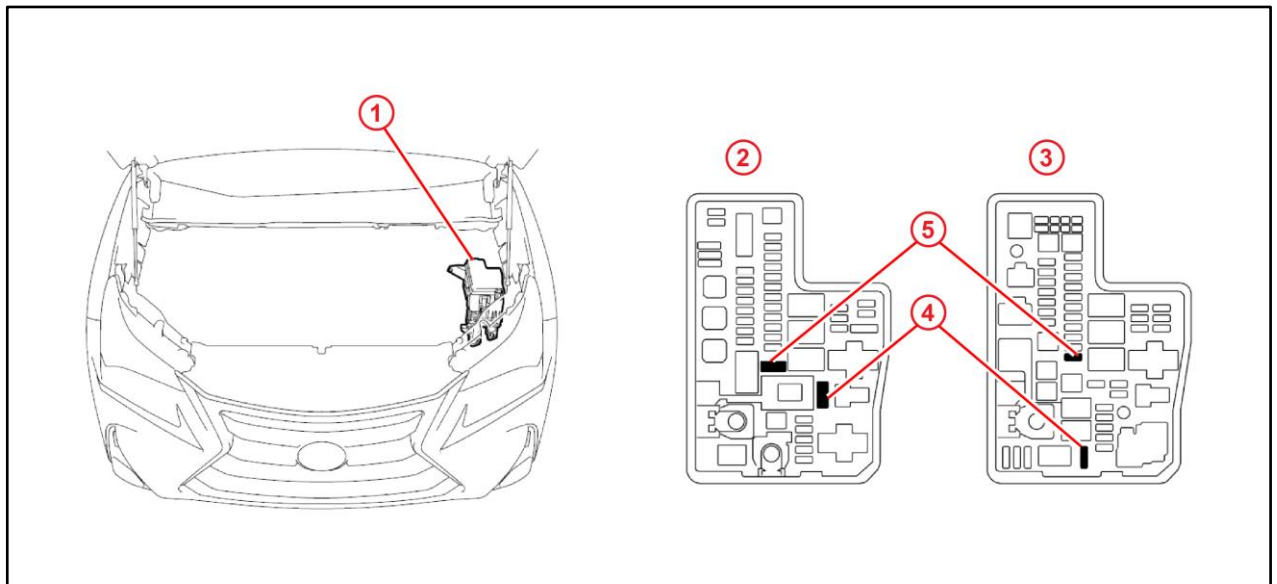
To minimize battery discharge during transportation and storage, the D/C cut fuse (20A) has been removed at the assembly plant and temporarily stored in the blank space of the Relay Block in the engine compartment.

During PDS, reinstall the D/C cut fuse (20A) into its original location and clear all related Diagnostic Trouble Codes (DTCs)

Installation Procedure

During PDS, remove the D/C cut fuse (20A) from the blank space of the Relay Block in the engine compartment and install it in the location shown.

Figure 5.



1	Relay Block
2	For Hybrid Vehicles
3	For Gasoline Vehicles

4	Remove This D/C Cut Fuse (20A)
5	Install D/C Cut Fuse (20A) Here (Original Location)

NOTE

While the vehicle is stored at the dealership, disconnect the negative (-) battery terminal to prevent battery discharge. Refer to Service Bulletin No. [L-SB-0108-17](#), "Battery Maintenance During PDS," for battery maintenance information.