

Pre-Delivery Service

Service Category General

Section Pre-Delivery Service

Market USA



Applicability

YEAR(S)	MODEL(S)	ADDITIONAL INFORMATION
2019	RC F, RC300, RC350	

Introduction

This bulletin contains the vehicle specific pre-delivery services for 2019 model year RC F, RC 300, and RC 350 vehicles. Additionally, refer to the all applicable Lexus model pre-delivery services for general pre-delivery services to be performed.

Warranty Information

OP CODE	DESCRIPTION	TIME	OFFP	T1	T2
N/A	Not Applicable to Warranty	-	-	-	-

Procedures

- Front License Plate and Mounting Bracket Installation 2
- Front Wheel Opening Extension Pad Installation 5
- D/C Cut Fuse Installation 6

Pre-Delivery Service

Front License Plate and Mounting Bracket Installation

The front license plate mounting bracket and two self-tapping screws for the 2019 model year RC F, RC 300, and RC 350 are stored in the luggage compartment of the vehicle at the assembly plant. For states that require a front license plate, install the bracket and bolts onto the bumper cover during PDS according to the following procedure.

The RC 300 and RC 350 (non-F Sport) models share the same installation procedure. The F Sport and F models require a different procedure (see page 4).

Installation Procedure for RC 300 and RC 350 (Non-F Sport)

1. Align holes "A" of the mounting bracket with the dimples on the front bumper cover.

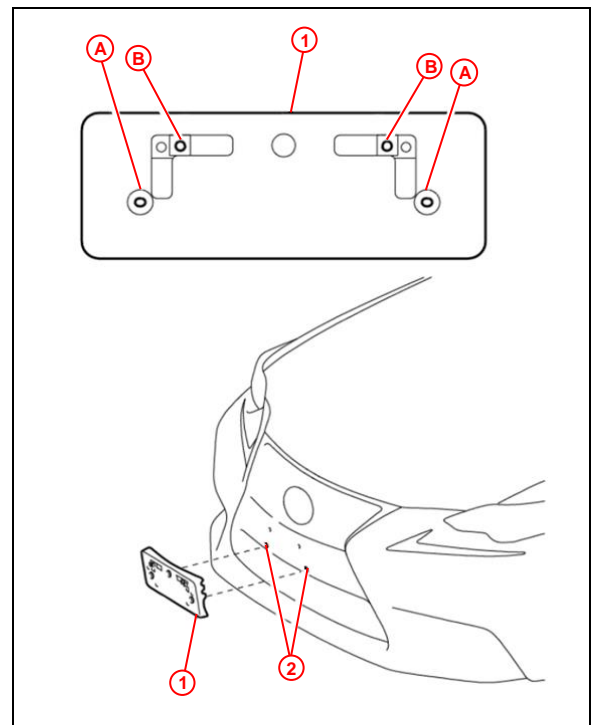
NOTICE

Do NOT drill into the dimples on the radiator grille.

NOTE

- Holes "A" are used to install the front mounting bracket onto the bumper cover.
- Holes "B" are used to install the front license plate onto the mounting bracket.

Figure 1.



1	Mounting Bracket
2	Dimple

Pre-Delivery Service

Front License Plate and Mounting Bracket Installation (continued)

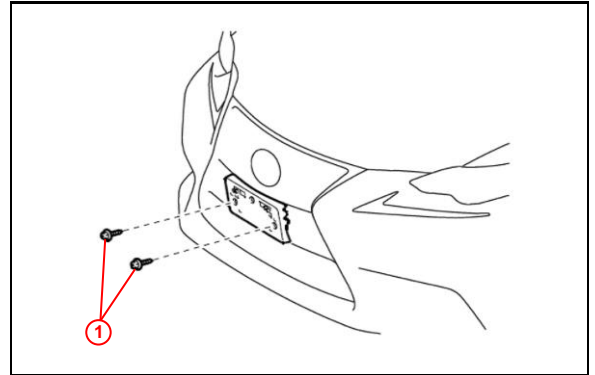
Installation Procedure for RC 300 and RC 350 (Non-F Sport) (continued)

2. Install the mounting bracket onto the front bumper cover at holes "A" using the two supplied self-tapping screws.

NOTICE

Do NOT over-tighten the self-tapping screws.

Figure 2.



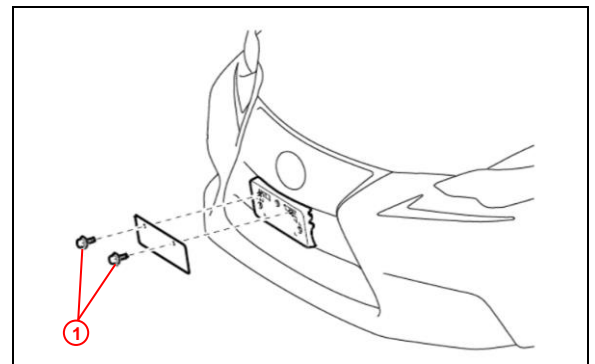
1	Self-tapping Screw
----------	---------------------------

3. Install the front license plate to the mounting bracket at holes "B" using two non-corroding bolts with the following dimensions:

Nominal Length: 10.0 mm (0.39 in.)

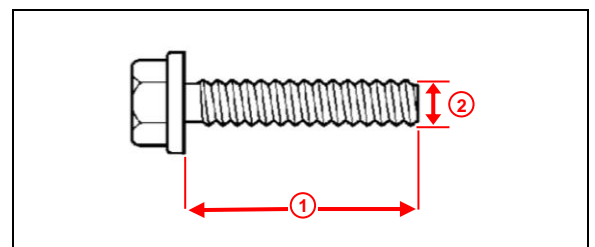
Diameter: 6.0 mm (0.24 in.)

Figure 3.



1	Bolt
----------	-------------

Figure 4.



1	Nominal Length
----------	-----------------------

2	Diameter
----------	-----------------

Pre-Delivery Service

Front License Plate and Mounting Bracket Installation (continued)

Installation Procedure for F Sport and RC F

1. Align holes "A" of the mounting bracket with the dimples (F Sport) or clips (RC F) on the radiator grille.

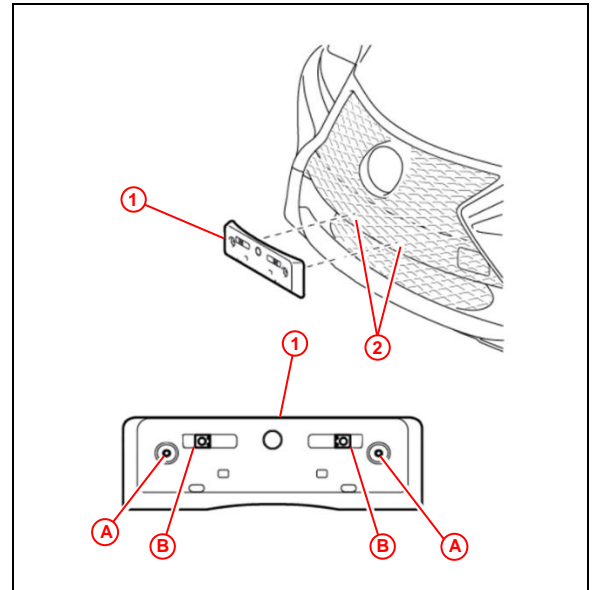
NOTICE

Do NOT drill into the dimples/clips on the radiator grille.

NOTE

- Holes "A" are used to install the mounting bracket to the radiator grille.
- Holes "B" are used to install the front license plate to the mounting bracket.

Figure 5.



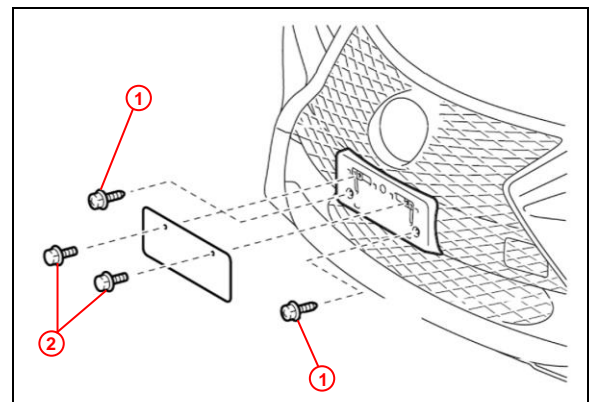
1	Mounting Bracket
2	Dimple (F Sport), Clip (RC F)

2. Install the mounting bracket onto the radiator grille using two self-tapping screws.

NOTICE

Do NOT over-tighten the self-tapping screws.

Figure 6.



1	Self-tapping Screw
2	Bolt

Pre-Delivery Service

Front License Plate and Mounting Bracket Installation (continued)

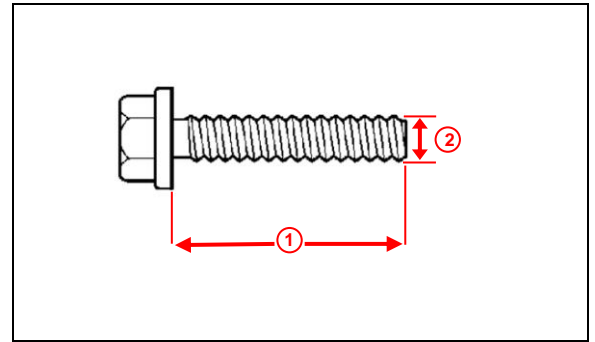
Installation Procedure for F Sport and RC F (continued)

3. Install the front license plate onto the mounting bracket using two bolts of non-corroding type with the following dimensions.

Nominal Length: 10.0 mm (0.39 in.)

Diameter: 6.0 mm (0.24 in.)

Figure 7.



1	Nominal Length
2	Diameter

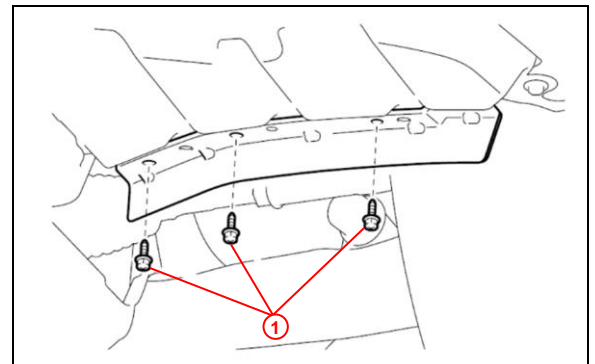
Front Wheel Opening Extension Pad Installation

The front wheel opening extension pad set (right and left front wheel opening extension pads and six self-tapping screws) is placed in the luggage compartment at the assembly plant to avoid damage in transit.

During PDS, install the front wheel opening extension pads onto the vehicle.

Install the right and left front wheel opening extension pads with the six self-tapping screws.

Figure 8.



1	Self-tapping Screw
----------	---------------------------

Pre-Delivery Service

D/C Cut Fuse Installation

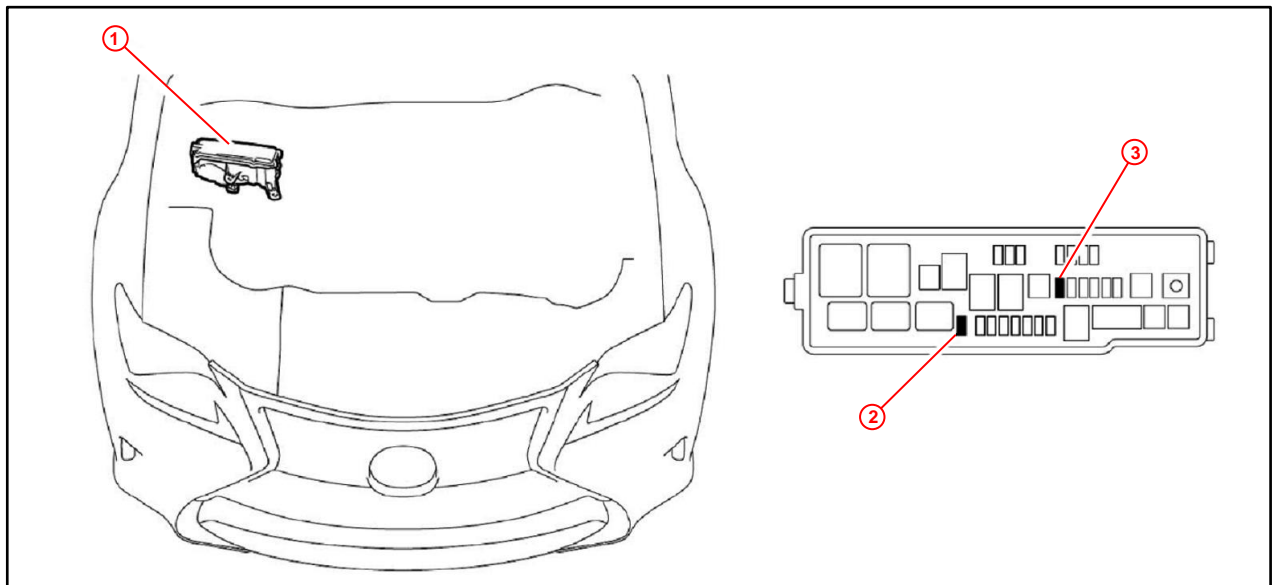
To minimize battery discharge during transportation and storage, the D/C cut fuse (RC F: 20A, RC 300 and RC 350: 30A) has been removed at the assembly plant and temporarily stored in the blank space of the Relay Block in the engine compartment.

During PDS, reinstall the D/C cut fuse into its original location.

Installation Procedure

During PDS, remove the D/C cut fuse (RC F: 20A, RC 300/350: 30A) from the blank space of the engine compartment and install it in the location shown.

Figure 9.



1	Relay Block
2	Remove This D/C Cut Fuse (RC F: 20A, RC 300/350: 30A)

3	Install D/C Cut Fuse (30A) Here (RC F: 20A, RC 300/350: 30A) Here (Original Location)
----------	---

NOTE

- Removing the D/C cut fuse cuts off power sources relating to the DOME and MPX-B.
- While the vehicle is stored at the dealership, disconnect the negative (-) battery terminal to prevent battery discharge. Refer to Service Bulletin No. [L-SB-0108-17](#), "Battery Maintenance During PDS," for battery maintenance information.