



SERVICE BULLETIN

Classification: EC13-007c	Reference: NTB13-054c	Date: May 11, 2018
------------------------------	--------------------------	-----------------------

ALTIMA AND ROGUE; ENGINE TURNS OFF OR HESITATES WHEN ACCELERATING FROM A STOP DURING HOT AMBIENT TEMPERATURES (+100° F)

This bulletin has been amended. Table A on page 6 has been revised. No other changes have been made. Please discard previous versions of this bulletin.

APPLIED VEHICLES: 2013-2017 Altima Sedan (L33)
2014-2017 Rogue (T32)

APPLIED ENGINE: QR25DE

IF YOU CONFIRM

The engine turns OFF or hesitates when accelerating from a stop during hot ambient temperatures (+100° F),

AND

The engine is able to be restarted.

ACTION

1. Refer to step 6 in the **SERVICE PROCEDURE** to see if this bulletin applies to the vehicle you are working on.
2. If this bulletin applies, reprogram the ECM.

IMPORTANT: The purpose of **ACTION** (above) is to give you a quick idea of the work you will be performing. You **MUST** closely follow the entire **SERVICE PROCEDURE** as it contains information that is essential to successfully completing this repair.

Nissan Bulletins are intended for use by qualified technicians, not 'do-it-yourselfers'. Qualified technicians are properly trained individuals who have the equipment, tools, safety instruction, and know-how to do a job properly and safely. NOTE: If you believe that a described condition may apply to a particular vehicle, DO NOT assume that it does. See your Nissan dealer to determine if this applies to your vehicle.

SERVICE PROCEDURE

IMPORTANT: Before starting, make sure:

- ASIST on the CONSULT PC has been synchronized (updated) to the current date.
- All CONSULT-III plus (C-III plus) software updates (if any) have been installed.

NOTE:

- Most instructions for reprogramming with C-III plus are displayed on the CONSULT PC screen.
- If you are not familiar with the reprogramming procedure, [click here](#). This will link you to the "CONSULT- III plus (C-III plus) Reprogramming" general procedure.

Preparation for Reprogramming

- Take the vehicle for a 10 minute drive in order to meet the following Idle Air Volume Learn (IAVL) conditions:
 - Engine coolant temperature: 70 -100°C (158 -212°F)
 - Battery voltage: More than 12.9V (At idle)
 - Transmission: Warmed up



Figure A

NOTE:

- After ECM reprogramming is complete, you will be required to perform Throttle Valve Closed Position, Idle Air Volume Learn (IAVL), and Accelerator Closed Position.
- The above conditions are required for the IAVL to complete.

CAUTION:

- Connect a battery charger to the vehicle battery. The vehicle battery voltage must stay between 12.0V and 15.5V during reprogramming, or the ECM may be damaged.
- Be sure to turn OFF all vehicle electrical loads. If a vehicle electrical load remains ON, the ECM may be damaged.
- Be sure to connect the AC Adapter. If the CONSULT PC battery voltage drops during reprogramming, the process will be interrupted and the ECM may be damaged.
- Turn OFF all external Bluetooth® devices (e.g., cell phones, printers, etc.) within range of the CONSULT PC and the VI. If Bluetooth® signal waves are within range of the CONSULT PC during reprogramming, reprogramming may be interrupted and the ECM may be damaged.

1. Connect the CONSULT PC to the vehicle to begin the reprogramming procedure.
2. Start C-III plus.
3. Wait for the plus VI to be recognized.
 - The **Serial No.** will display when the plus VI is recognized.
4. Select **Re/programming, Configuration**.

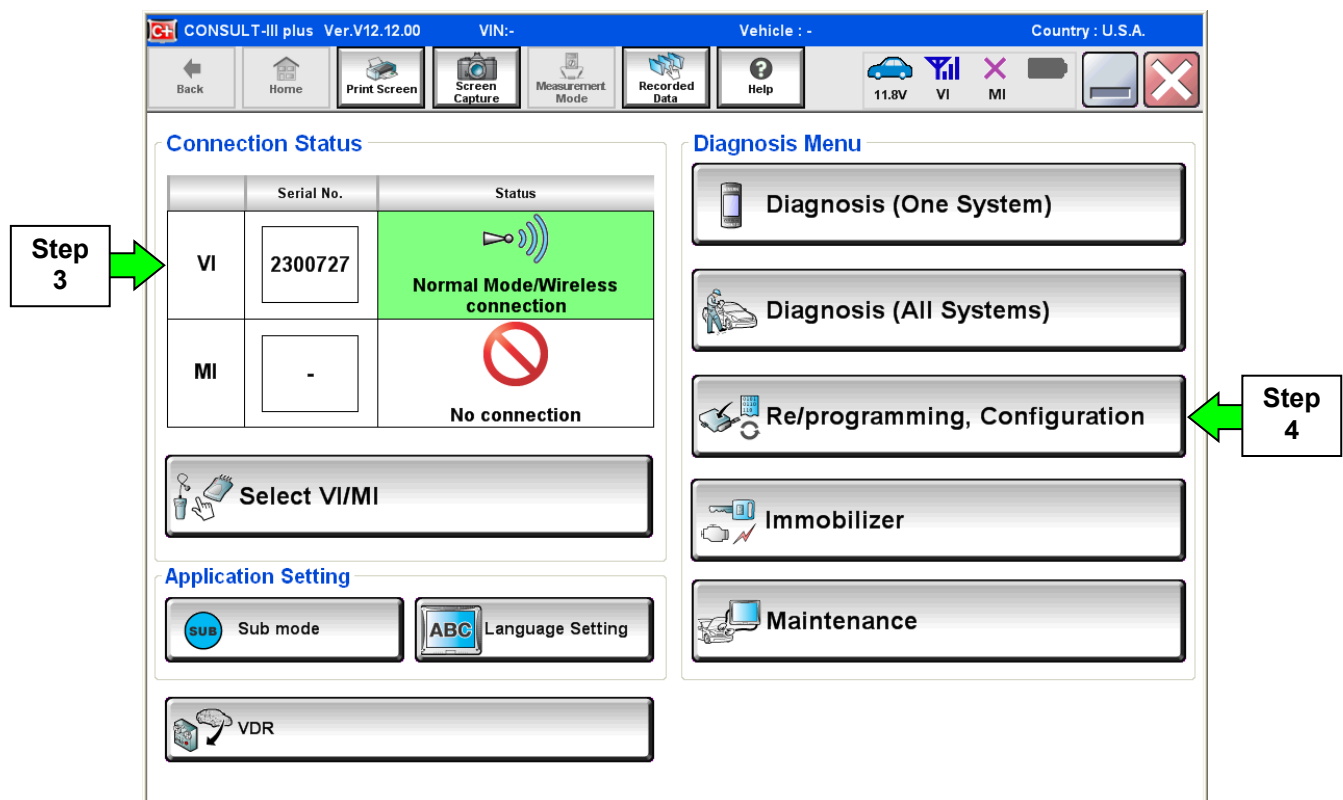


Figure 1

5. Follow the C-III plus on-screen instructions and navigate to the screen shown in Figure 2 on the **next page**.

6. When you get to the screen shown in Figure 2, confirm this bulletin applies as follows:

A. Find the ECM **Part Number** and write it on the repair order.

NOTE: This is the current ECM Part Number (P/N).

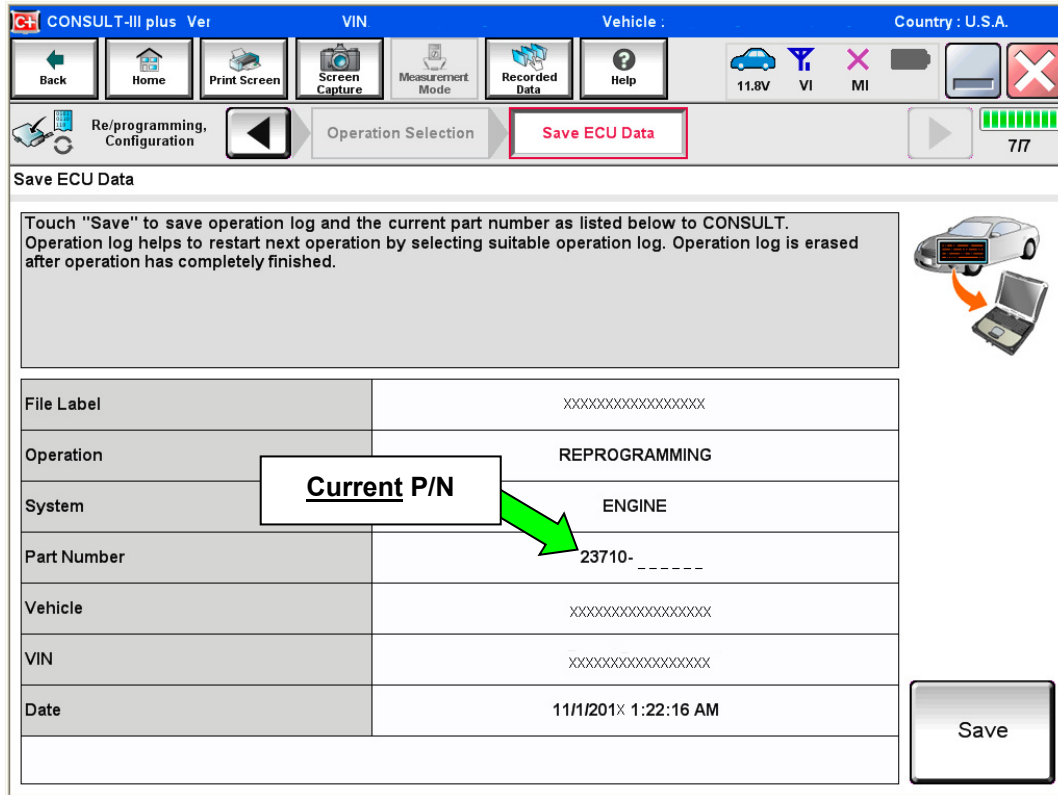


Figure 2

B. Compare the P/N you wrote down to the numbers in the **Current ECM Part Number** column in **Table A** on pages 5 and 6.

- If there is a match, this bulletin applies. Continue with the reprogramming procedure.
- If there is not a match, this bulletin does not apply. Return to ASIST for further diagnostic and repair information.

Table A - Altima

See next page for Rogue vehicles.

Model	Year	Current ECM Part Number: 23710 -
<p>Altima Sedan with QR25DE Engine</p>	2013	<p>3TA0A, 3TA0B, 3TA0C 3TA1B, 3TA1C, 3TA1D 3TA6A, 3TA6B, 3TA6C 3TA7A, 3TA7B, 3TA7C 3TA8A, 3TA8B, 3TA8C 3TY0A, 3TY0B, 3TY0C 3TY1A, 3TY1B, 3TY1C 3TY6A, 3TY6B, 3TY6C 3TY7A, 3TY7B, 3TY7C 3TY8A, 3TY8B, 3TY8C</p>
	2014	<p>9HM3A, 9HM3B, 9HM4A, 9HM4B 9HM5A, 9HM5B, 9HM6A, 9HM6B 9HM7A, 9HM7B, 9HM8A, 9HM8B</p>
	2015	<p>9HP0A, 9HP0B, 9HP0C, 9HP0D 9HP1A, 9HP1B, 9HP1C, 9HP1D 9HP2A, 9HP2B, 9HP2C, 9HP2D 9HP3A, 9HP3B, 9HP3C, 9HP3D, 9HP3E 9HP4A, 9HP4B, 9HP4C, 9HP4D, 9HP4E 9HP5A, 9HP5B, 9HP5C, 9HP5D, 9HP5E</p>
	2016	<p>9HN4A, 9HN4B, 9HN4C, 9HN4D, 9HN4E 9HN5A, 9HN5B, 9HN5C, 9HN5D, 9HN5E 9HN6A, 9HN6B, 9HN6C, 9HN6D, 9HN6E 9HN7A, 9HN7B, 9HN7C, 9HN7D, 9HN7E 9HN8A, 9HN8B, 9HN8C, 9HN8D, 9HN8E 3TY2A, 3TY2B, 3TY2C, 3TY2D, 3TY2E 3TY3A, 3TY3B, 3TY3C, 3TY3D, 3TY3E 3TY4A, 3TY4B, 3TY4C, 3TY4D, 3TY4E 3TY5A, 3TY5B, 3TY5C, 3TY5D, 3TY5E 3TY9A, 3TY9B, 3TY9C, 3TY9D, 3TY9E 3TH0A, 3TH1A, 3TH2A, 3TH3A, 3TH4A, 3TH5A 3TH6A, 3TH7A, 3TH8A, 3TH9A</p>
	2017	<p>9HL0A, 9HL0B, 9HL0D 9HL1A, 9HL1B, 9HL1D 9HL2A, 9HL2B, 9HL2D 9HL3A, 9HL3B, 9HL3D 9HL4A, 9HL4B, 9HL4D 3TF7A, 3TF8A, 3TF9A</p>

Table A - Rogue

Model	Year	Current ECM Part Number: 23710 -
Rogue with QR25DE Engine	2014	4BA1A, 4BA1B, 4BA1C, 4BA1D 4BA2A, 4BA2B, 4BA2C, 4BA2D
	2015	5HA1A, 5HA1B, 5HA1C, 5HA1D 5HA2A, 5HA2B, 5HA2C, 5HA2D 5HA3A, 5HA3B, 5HA3C, 5HA3D 5HA4A, 5HA4B, 5HA4C, 5HA4D
	2016	5HB0A, 5HB1A, 5HB2A, 5HB3A 5HJ0A, 5HJ0B, 5HJ0C, 5HJ0D, 5HJ0E 5HJ1A, 5HJ1B, 5HJ1C, 5HJ1D, 5HJ1E 5HJ2A, 5HJ2B, 5HJ2C, 5HJ2D, 5HJ2E 5HJ3A, 5HJ3B, 5HJ3C, 5HJ3D, 5HJ3E 5HJ4A, 5HJ4B, 5HJ5A, 5HJ5B 5HJ6A, 5HJ6B, 5HJ7A, 5HJ7B 4BU0A, 4BU1A, 4BU2A, 4BU3A 4BU4A, 4BU5A, 4BU6A, 4BU7A 4BT0A, 4BT0B, 4BT1A, 4BT1B 4BT2A, 4BT2B, 4BT3A, 4BT3B 4BT4A, 4BT4B, 4BT5A, 4BT5B 4BT6A, 4BT6B, 4BT7A, 4BT7B 6FJ0A, 6FJ0B, 6FJ0C, 6FJ0D, 6FJ0E 6FJ1A, 6FJ1B, 6FJ1C, 6FJ1D, 6FJ1E 6FJ2A, 6FJ2B, 6FJ2C, 6FJ2D, 6FJ2E 6FJ3A, 6FJ3B, 6FJ3C, 6FJ3D, 6FJ3E 6FJ4A, 6FJ4B, 6FJ4C, 6FJ4D, 6FJ4E 6FJ5A, 6FJ5B, 6FJ5C, 6FJ5D, 6FJ5E 6FJ6A, 6FJ6B, 6FJ6C, 6FJ6D, 6FJ6E 6FJ7A, 6FJ7B, 6FJ7C, 6FJ7D, 6FJ7E 6FK0A, 6FK0B, 6FK0C, 6FK0D 6FK1A, 6FK1B, 6FK1C, 6FK1D 6FK2A, 6FK2B, 6FK2C, 6FK2D, 6FK3C, 6FK3D
	2017	6FL0A, 6FL0B, 6FL0C, 6FL0D 6FL1A, 6FL1B, 6FL1C, 6FL1D 6FL2A, 6FL2B, 6FL2C, 6FL2D 6FL3A, 6FL3B, 6FL3C, 6FL3D, 6FL4C, 6FL4D 6FL5C, 6FL5D, 6FL6C, 6FL6D 7FF0A, 7FF1A, 7FF2A, 7FF3A 7FF4A, 7FF5A, 7FF6A, 7FF7A, 7FF8A 5HK0A, 5HK0B, 5HK0C, 5HK0D 5HK1A, 5HK1B, 5HK1C, 5HK1D 5HK2C, 5HK2D 7FP0A, 7FP0B, 7FP0C, 7FP0D 7FP1A, 7FP1B, 7FP1C, 7FP1D 7FP2A, 7FP2B, 7FP2C, 7FP2D 7FP3A, 7FP3B, 7FP3C, 7FP3D 7FP4C, 7FP4D, 7FP5C, 7FP5D 7FP6C, 7FP6D 7FR3A, 7FR4A, 7FR5A, 7FR6A

7. Follow the on-screen instructions to navigate C-III plus and reprogram the ECM.

NOTES:

- In some cases, more than one new P/N for reprogramming is available.
 - In this case, the screen in Figure 3 displays.
 - Select and use the reprogramming option that **does not** have the message “Caution! Use ONLY with NTBXX-XXX”.
- If you get this screen and it is blank (no reprogramming listed), it means there is no reprogramming available for this vehicle.

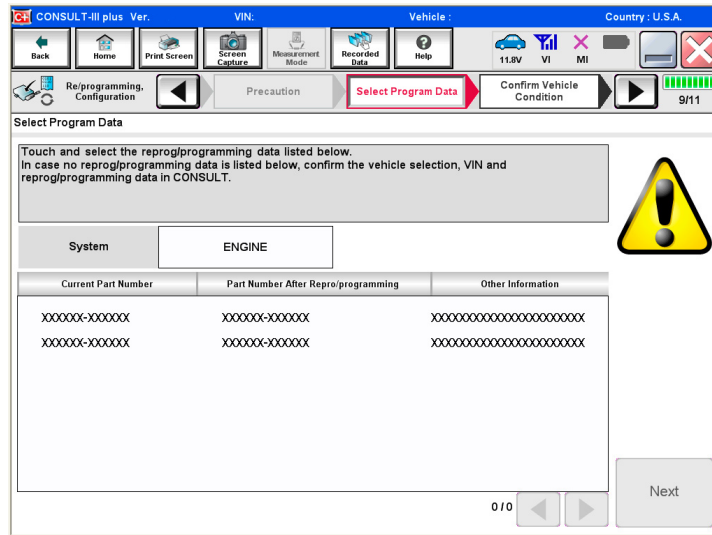


Figure 3

- Before reprogramming will start, you will be required to enter your User Name and Password.
 - The CONSULT PC must be connected to the Internet (Wi-Fi or cable).
 - If you do not know your User Name and Password, contact your Service Manager.

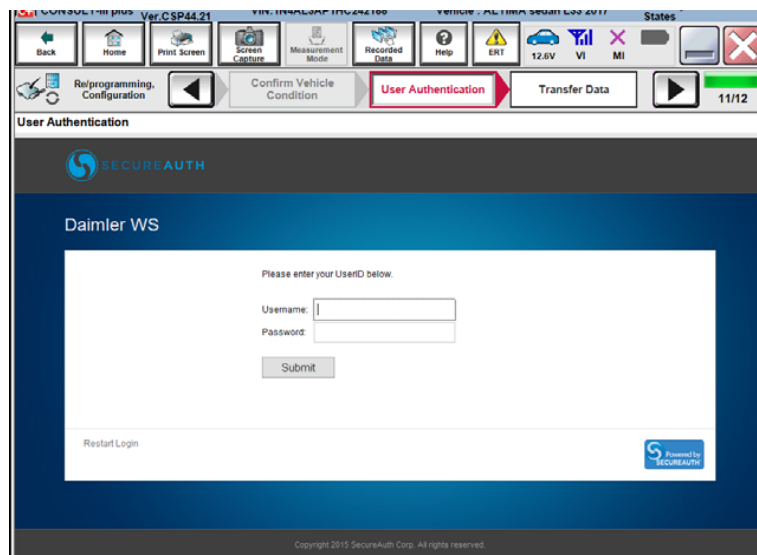


Figure 4

8. When the screen in Figure 5 displays, reprogramming is complete.

NOTE: If the screen in Figure 5 does not display (which indicates reprogramming did not complete), refer to the information on the next page.

9. Disconnect the battery charger from the vehicle.

10. Select **Next**.

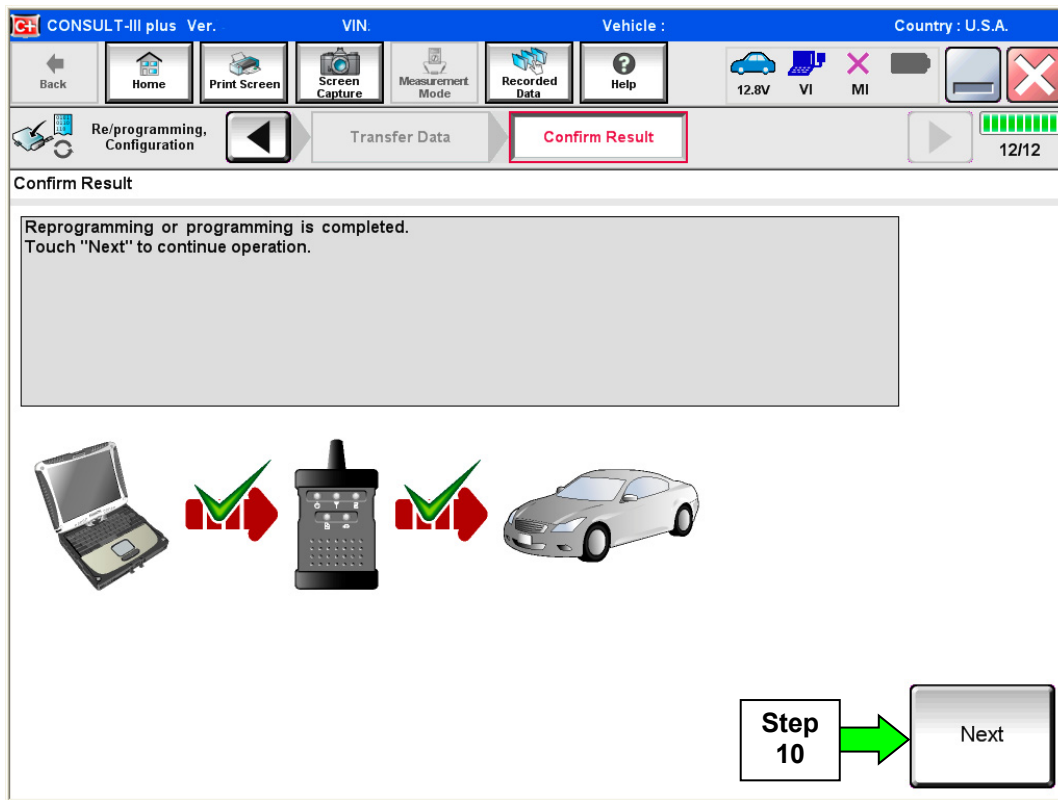


Figure 5

NOTES:

- In the next steps (page 10), you will perform Throttle Valve Closed Position, Idle Air Volume Learn, Accelerator Closed Position, and DTC erase.
- These operations are required before C-III plus will provide the final reprogramming confirmation report.

ECM recovery:

Do not disconnect plus VI or shut down C-III plus if reprogramming does not complete.

If reprogramming does not complete and the “!” icon displays as shown in Figure 6:

- Check battery voltage (12.0 - 15.5 V).
- Ignition is ON, engine OFF.
- External Bluetooth® devices are OFF.
- All electrical loads are OFF.
- **Select retry and follow the on screen instructions.**
- “Retry” may not go through on first attempt and can be selected more than once.

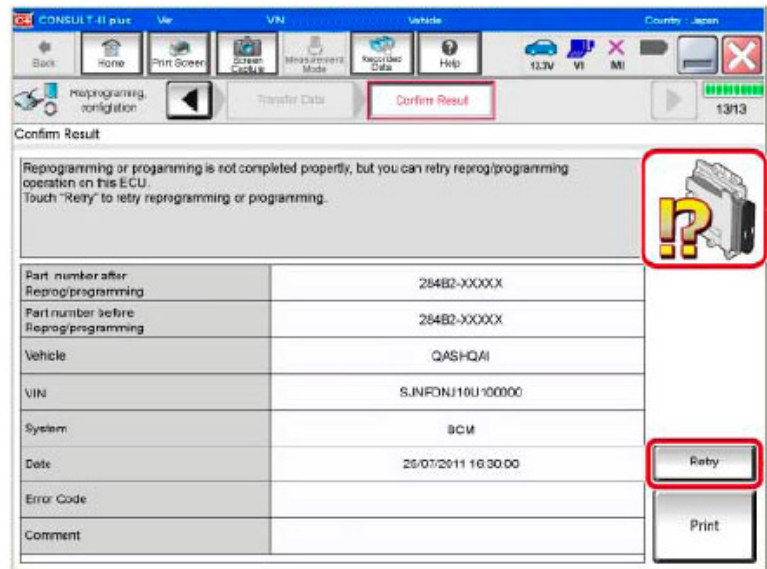


Figure 6

If reprogramming does not complete and the “X” icon displays as shown in Figure 7:

- Check battery voltage (12.0 - 15.5 V).
- CONSULT A/C adapter is plugged in.
- Ignition is ON, engine OFF.
- Transmission is in Park.
- All C-III plus / VI cables are securely connected.
- All C-III plus updates are installed.
- **Select Home, and restart the reprogram procedure from the beginning.**

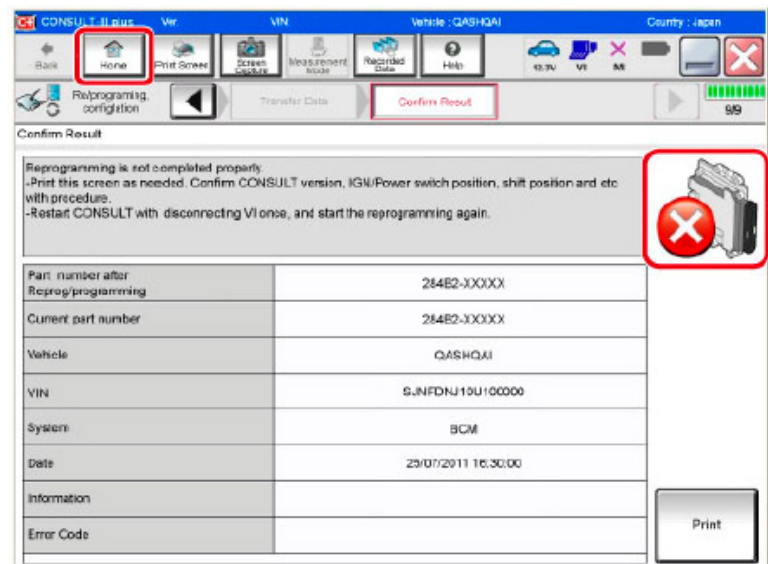


Figure 7

11. Follow the on-screen instructions to perform the following:

- **Throttle Valve Closed Position**
- **Idle Air Volume Learn (IAVL)**

NOTE:

- **Listed below are common required conditions for IAVL to complete.**
- **If IAVL does not complete within a few minutes, a condition may be out of range. Refer to the appropriate Electronic Service Manual (ESM) for specific conditions required for the vehicle you are working on.**
 - Engine coolant temperature: 70 -100° C (158 -212°F)
 - Battery voltage: More than 12.9V (At idle)
 - Selector lever: P or N
 - Electric load switch: OFF (Air conditioner, headlamp, rear window defogger)
 - Steering wheel: Neutral (Straight-ahead position)
 - Vehicle speed: Stopped
 - Transmission: Warmed up (ATF TEMP SE less than 0.9V)

- **Accelerator Pedal Close Position Learning**
- **Erase DTCs**

Continue to the next page.

- 12. When the entire reprogramming process is complete, the screen in Figure 8 will display.
- 13. Verify the before and after part numbers are different.
- 14. Print a copy of this screen (Figure 8) and attach it to the repair order for warranty documentation.
- 15. Select **Confirm**.

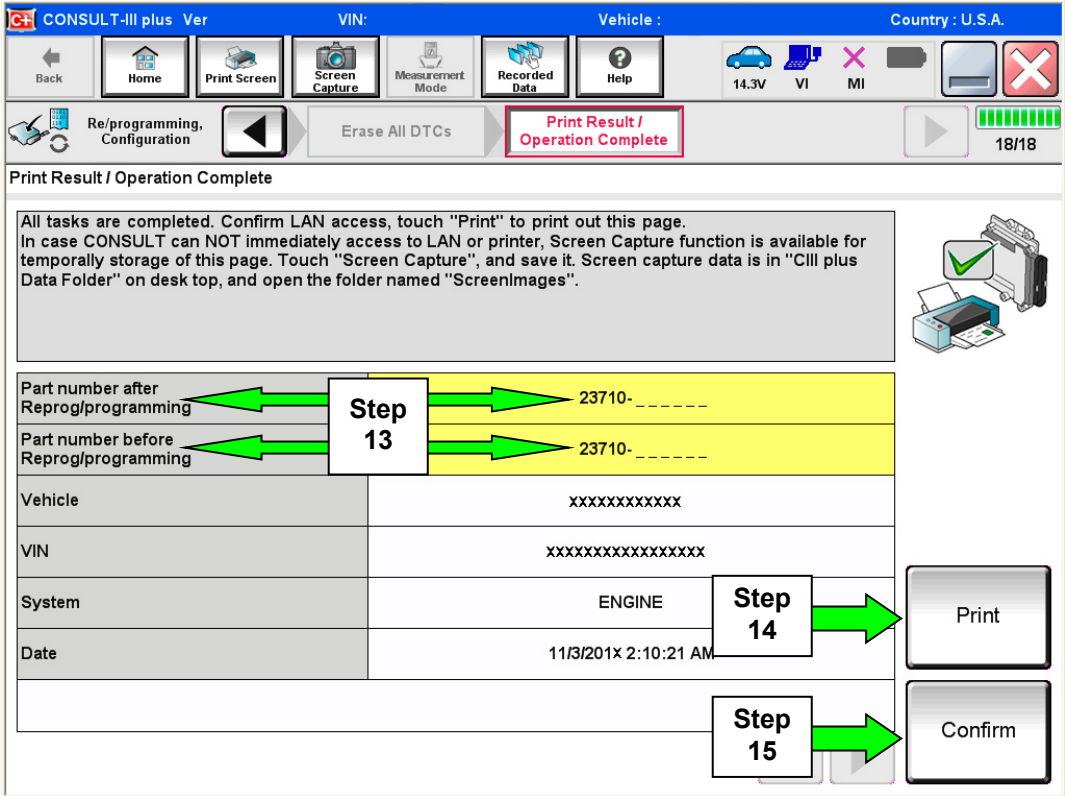


Figure 8

- 16. Close C-III plus.
- 17. Turn the ignition OFF.
- 18. Disconnect the plus VI from the vehicle.

CLAIMS INFORMATION

Submit a Primary Part (PP) type line claim using the following claims coding:

DESCRIPTION	PFP	OP CODE	SYM	DIA	FRT
Reprogram Engine Control Module	(1)	DE97AA	ZE	32	(2)

(1) Refer to the electronic parts catalog (FAST or equivalent) and use the ECM part number as the Primary Failed Part (PFP).

(2) Reference the current Nissan Warranty Flat Rate Manual and use the indicated FRT.

