	GROUP Electrical	MODEL 2018MY~ Stinger (CK) with Navigation (AVN 5.0)
	NUMBER PS557 (Rev 1, 05/07/2018)	DATE April 2018

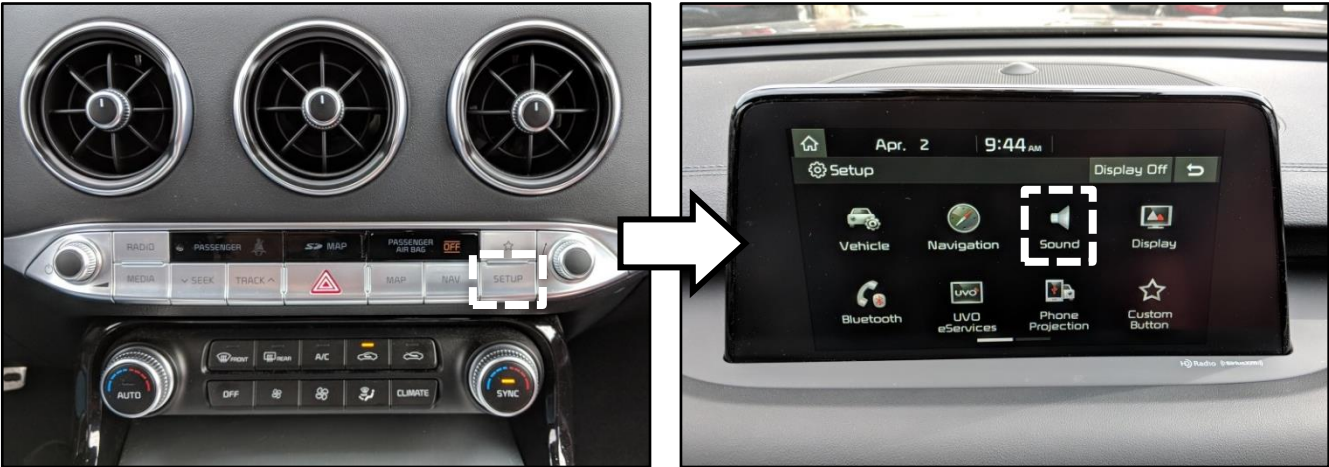


TECHNICAL OPERATIONS

SUBJECT: STINGER SOUND SYSTEM SETTINGS

This Pitstop provides information about some of the sound system settings available in the 2018MY~ Stinger (CK) vehicles with Premium Navigation (**720-watt Harmon/Kardon Quantum Logic Surround Sound System with 15 speakers**). Specific settings covered in this Pitstop are Quantum Logic Surround, Clari-fi, and the Priority Sound Settings.

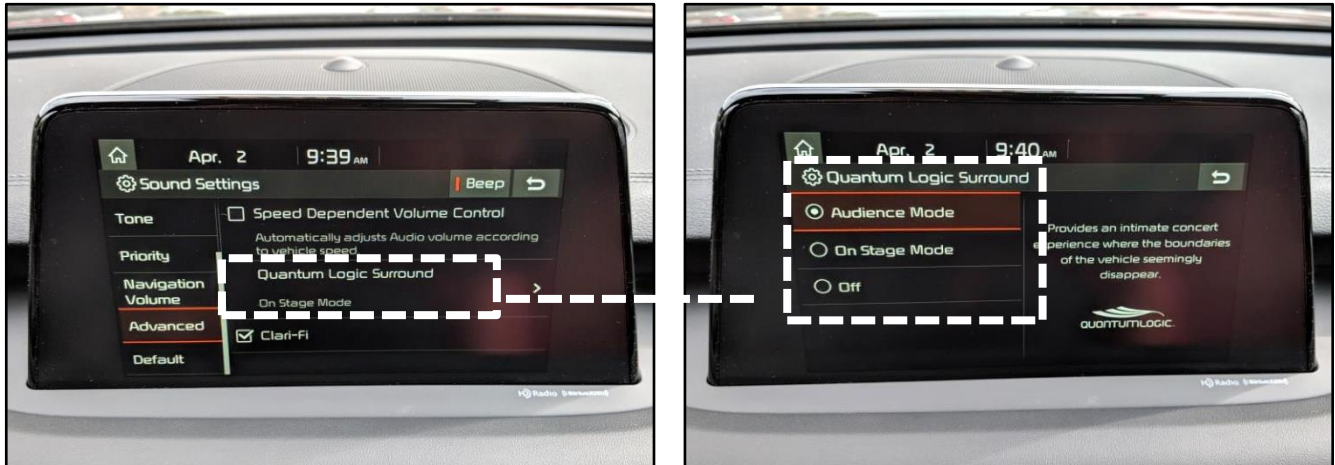
To access the sound settings, press the **SETUP** hardkey and select the **Sound** icon.



The sound settings consist of the following categories shown below, on the left menu screen: Position, Volume Levels, Tone, Priority, and Navigation Volume; **NOTE:** Advanced and Default settings shown on next screen (scroll down to view).



Quantum Logic Surround and **Clari-fi** are found in the **Advanced** settings along with **Speed Dependent Volume Control**.



Quantum Logic Surround

Within the Quantum Logic Surround, there are three (3) available settings: Audience Mode, On Stage Mode, and Off.

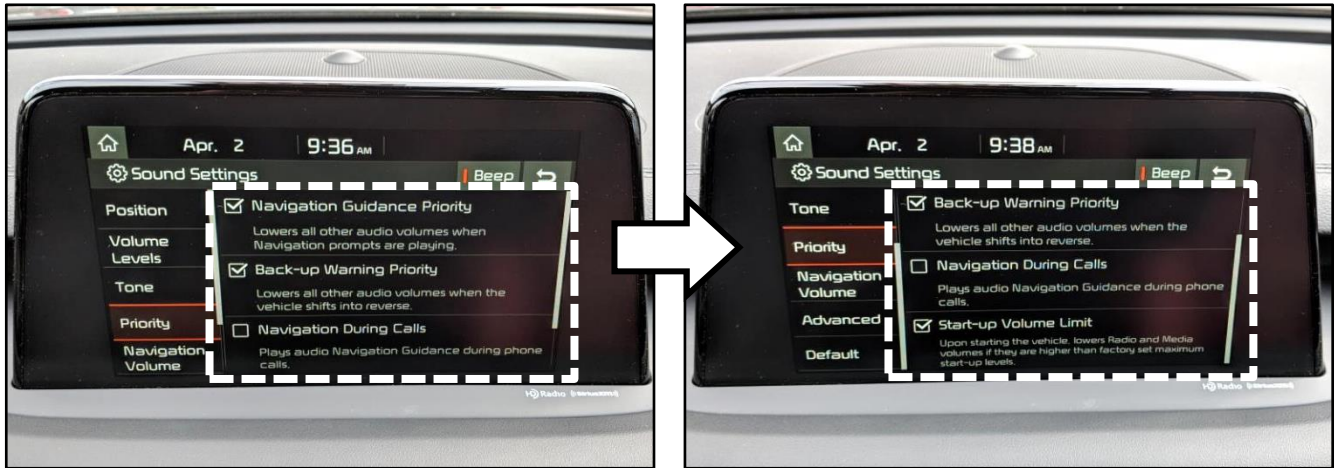
- **Audience Mode** provides an intimate concert experience where the boundaries of the vehicle seemingly disappear (sound comes from a stage in front of the driver)
- **On Stage Mode** is a surround sound experience that puts listeners on stage with their favorite artists placing individual instruments and musical elements throughout the cabin (sound surrounds the driver as if the driver is on stage with the instruments/singers)
- **Off** – Quantum Surround Logic is disabled (off)

Clari-fi (Harman Music Restoration Technology)

- Some music sources are digitally compressed (such as files sourced from satellite radio or some streaming music sources)
- Clari-fi scans compressed music files and rebuilds details lost during compression resulting in clearer and more dynamic sound performance
- Reference the link to the Harman Clari-fi website below for more information:

<http://www.clarifisound.com>

It is important to be aware of the options in **Priority** as some customers may not realize that they can choose to enable or disable these settings. Not being aware of these options, may result in customer complaints regarding the volume lowering during engine start up or when shifting transmission into reverse.



The **Priority** setting includes the following menu options (touch check box to turn on or off) on the right side of the screen:

- **Navigation Guidance Priority**
Priority is given to the navigation guidance and other audio volumes are lowered.
- **Back Up Warning Priority**
The audio volume is lowered when the transmission is shifted into reverse.
- **Navigation during Call**
Navigation guidance will play during active phone calls.
- **Start Up Volume** (scroll down to view)
Radio and media volumes are lowered upon vehicle start up if the volume is above a set maximum level during start-up.