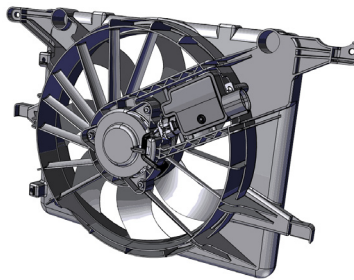


SC-17-20-08**MODEL:** Karma Revero**DATE:** June 2017**TITLE:** Radiator Fan Inspection**Revised April 2018**

PRIORITY: On Complaint**APPLICABILITY:** MY17 and MY18 Revero**MARKET REGION:** North America**PURPOSE:** Inspection of Radiator and Fan Assembly

Vehicles exhibiting a vibration in several areas:

- Very slight vibration felt in steering wheel or instrument panel while vehicle is stationary and in stealth mode
- Vibration felt in front fascia and front fenders when A/C compressor is active
 1. Verify the fan operation through Karma Sync- by operating “Fan 3” on high
 2. Inspect the vehicle to verify fan installation is correct
 3. Verify fan is not binding and it spins freely



Karma Automotive Bulletins and service documents are intended for use by experienced and trained Technicians. If you lack the skills, tools, equipment and a suitable workshop for any procedure described in this document, we suggest you leave such repairs to a Karma retailer and service provider. See your service provider for advice on whether your vehicle may benefit from the information contained within this document. The information contained in the Karma Bulletin is accurate at the date of publication. However, Karma Automotive regularly updates technical information. Please check with your Karma Automotive Retailer and Karma Automotive service provider that the bulletin you intend to use contains the latest available information.

SC-17-20-08**MODEL: Karma Revero****DATE: June 2017****TITLE: Radiator Fan Inspection****Revised April 2018**

The CRFM assembly (fan and shroud with radiator) must be installed flush with the skid plate surface on the bottom, and centered on the top bracket.

Raise the vehicle to inspect underneath.

1. Inspect lower radiator mounting grommet

- Verify there is no gap between grommet flange and skid plate surface (fig 1a)
- Verify the A/C lines, intercooler pipe or other components are not contacting the assembly

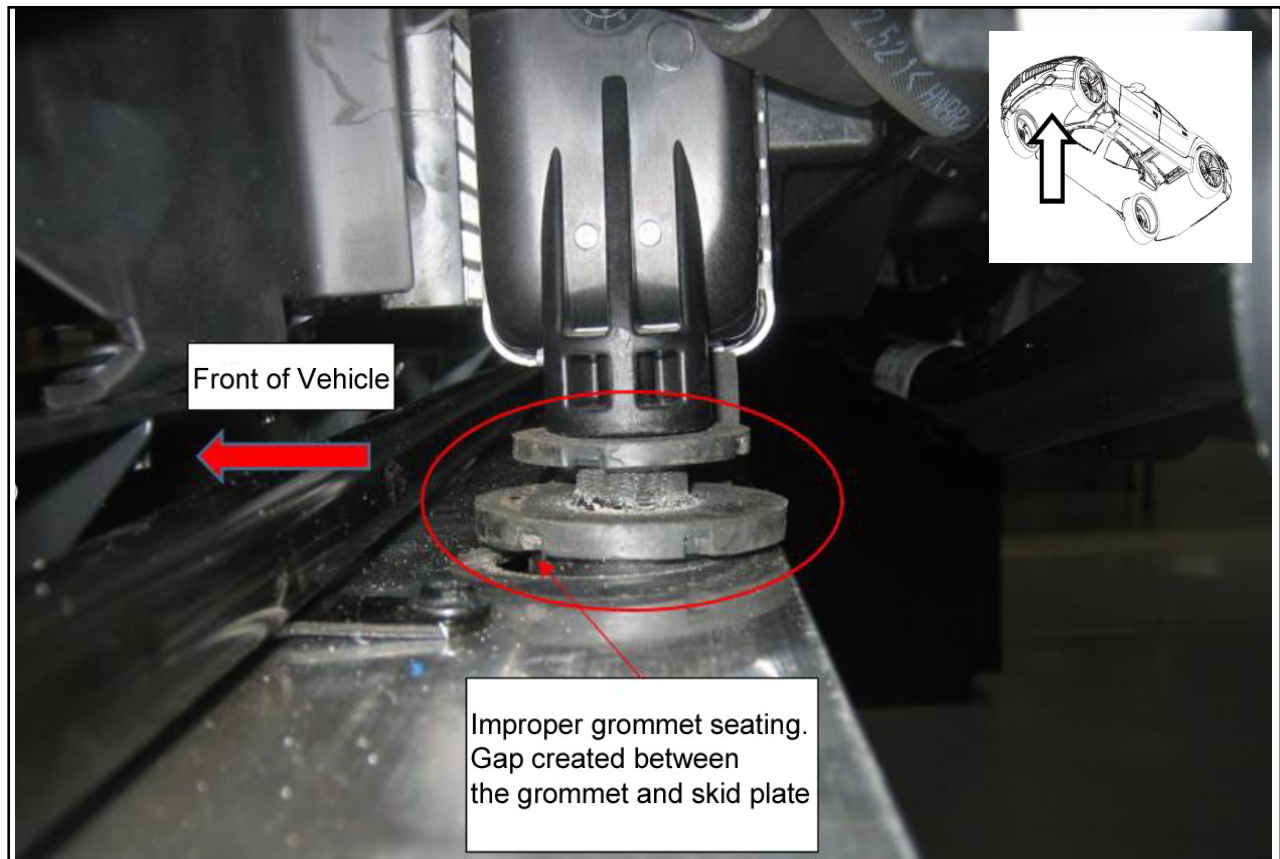


fig.1a

Karma Automotive Bulletins and service documents are intended for use by experienced and trained Technicians. If you lack the skills, tools, equipment and a suitable workshop for any procedure described in this document, we suggest you leave such repairs to a Karma retailer and service provider. See your service provider for advice on whether your vehicle may benefit from the information contained within this document. The information contained in the Karma Bulletin is accurate at the date of publication. However, Karma Automotive regularly updates technical information. Please check with your Karma Automotive Retailer and Karma Automotive service provider that the bulletin you intend to use contains the latest available information.

MODEL: Karma Revero

DATE: June 2017

Revised April 2018

TITLE: Radiator Fan Inspection

2. Open hood

- Inspect upper CRFM mounting grommets
- Confirm upper CRFM grommets are installed and in position (fig.2a and fig.2b)
- Again verify there is no interference with other components and the CRFM assembly

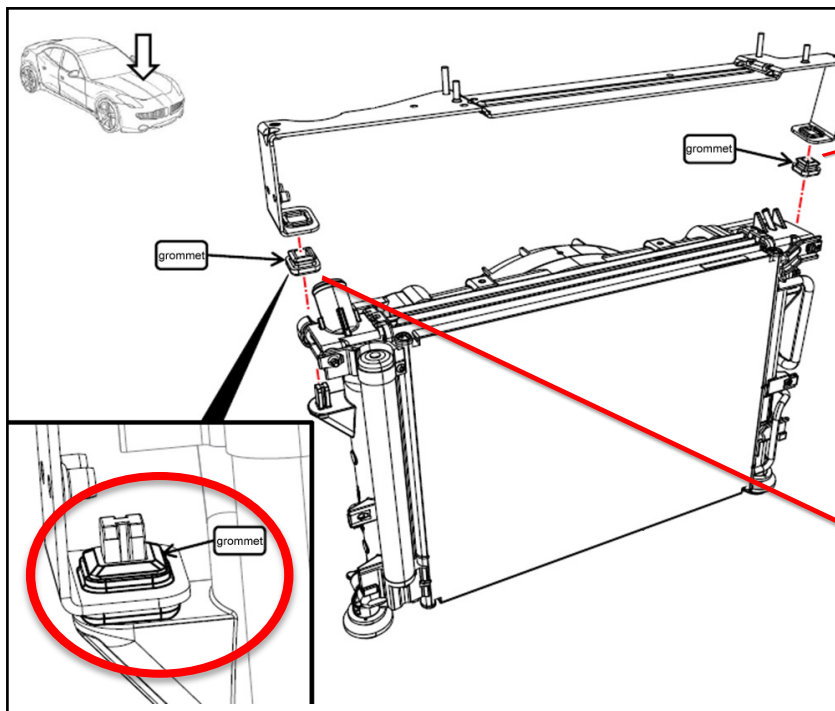


fig.2a



fig.2b

If the installation is not in alignment loosen the fittings and align the CRFM assembly properly to fit as described.

Activate fan again using Karma sync - "Fan 3" on high - to verify vibration is no longer present.

Karma Automotive Bulletins and service documents are intended for use by experienced and trained Technicians. If you lack the skills, tools, equipment and a suitable workshop for any procedure described in this document, we suggest you leave such repairs to a Karma retailer and service provider. See your service provider for advice on whether your vehicle may benefit from the information contained within this document. The information contained in the Karma Bulletin is accurate at the date of publication. However, Karma Automotive regularly updates technical information. Please check with your Karma Automotive Retailer and Karma Automotive service provider that the bulletin you intend to use contains the latest available information.

MODEL: Karma Revero

DATE: June 2017

Revised April 2018

TITLE: Radiator Fan Inspection

If the fan continues displaying vibration, loosen bolts #3 as indicated. Turn the vehicle on and set the AC to low, then force the engine ON for 2-5 minutes and then turn off. Tighten the bolts. Re-torque to 8 ± 1.5 Nm (fig.3a 3b) and seen in fig.3c and 3d.

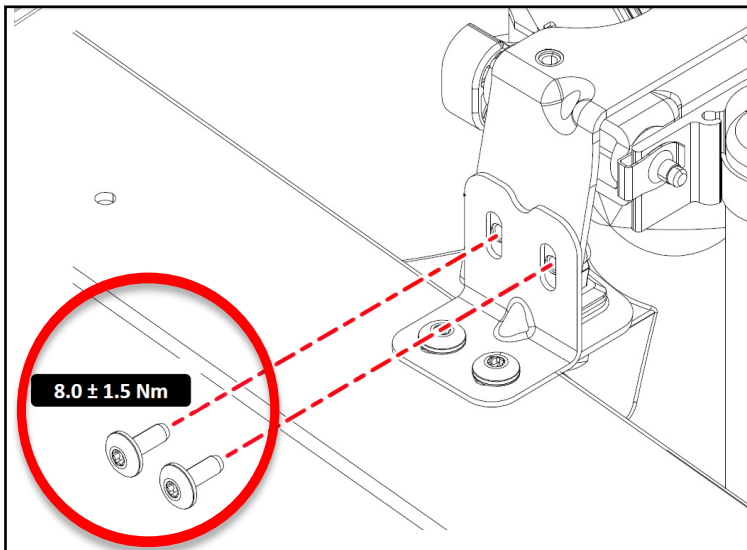


fig.3a

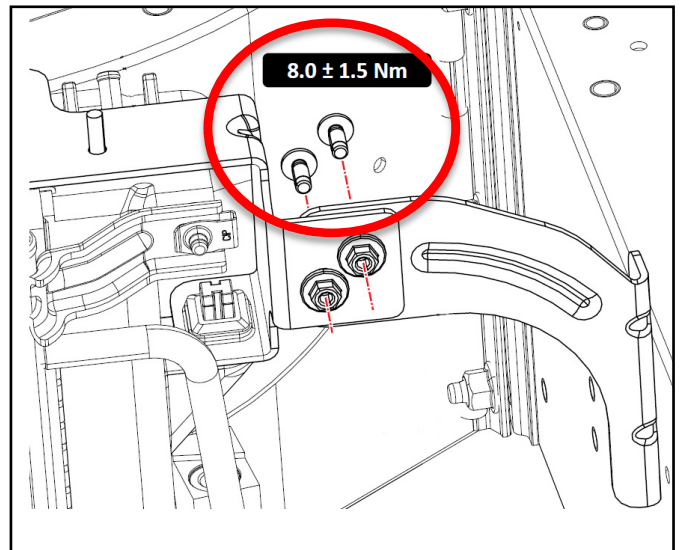


fig.3b



fig.3c



fig.3d

Activate fan again using Karma sync - "Fan 3" on high - verify vibration is no longer present.

If the fan continues to display the concern, remove the bottom seal, loosen the radiator to allow for some manipulation in order to remove the old seal. Clean off any adhesive residue.

Karma Automotive Bulletins and service documents are intended for use by experienced and trained Technicians. If you lack the skills, tools, equipment and a suitable workshop for any procedure described in this document, we suggest you leave such repairs to a Karma retailer and service provider. See your service provider for advice on whether your vehicle may benefit from the information contained within this document. The information contained in the Karma Bulletin is accurate at the date of publication. However, Karma Automotive regularly updates technical information. Please check with your Karma Automotive Retailer and Karma Automotive service provider that the bulletin you intend to use contains the latest available information.

MODEL: Karma Revero

DATE: June 2017

Revised April 2018

TITLE: Radiator Fan Inspection

Install the new Bottom Seal [1] **C131132000901** as shown (fig 3a) under the radiator onto [2] skid frame support. The images are shown with parts out of the vehicle for clarity.

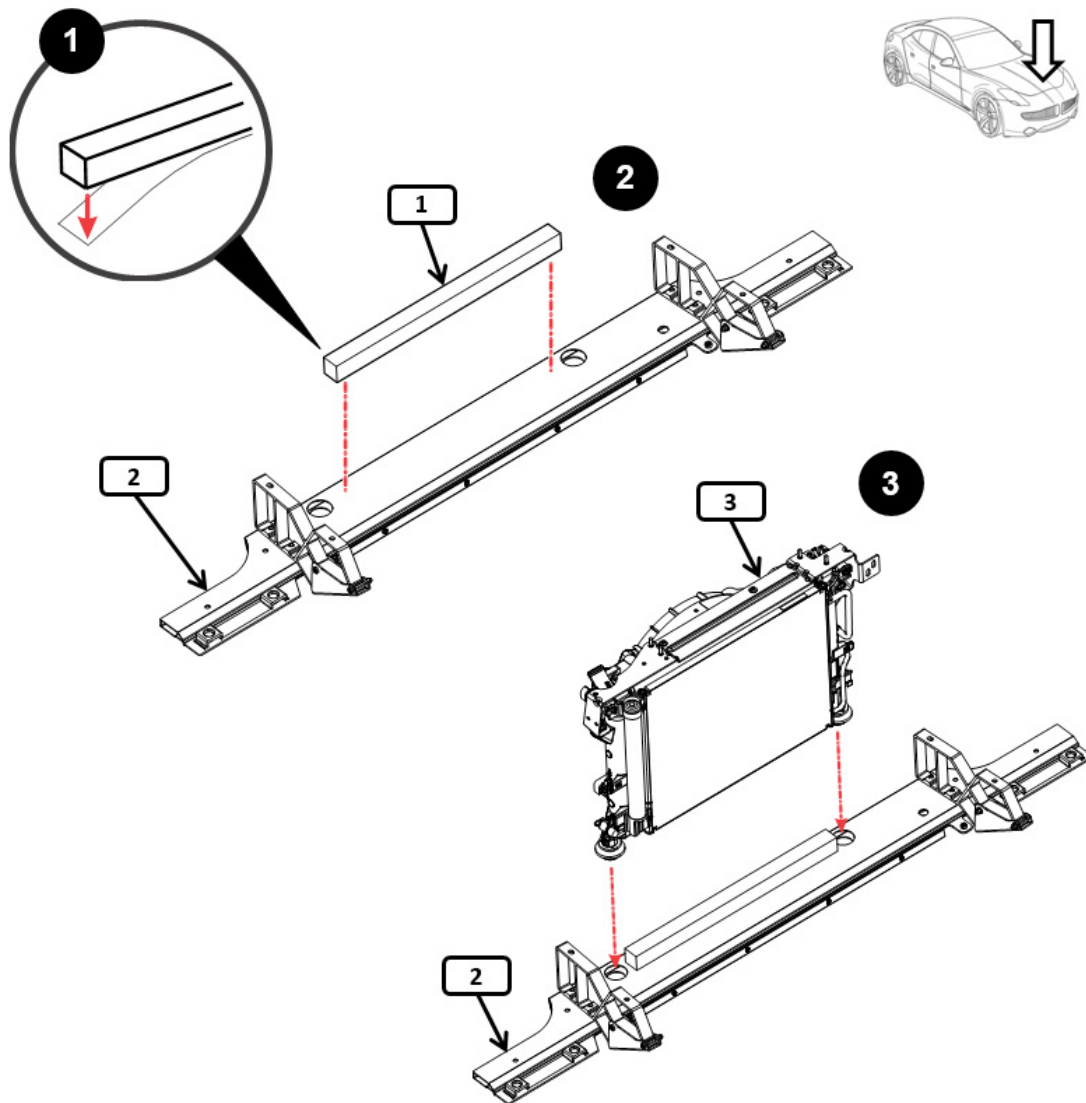


Fig 3a

Karma Automotive Bulletins and service documents are intended for use by experienced and trained Technicians. If you lack the skills, tools, equipment and a suitable workshop for any procedure described in this document, we suggest you leave such repairs to a Karma retailer and service provider. See your service provider for advice on whether your vehicle may benefit from the information contained within this document. The information contained in the Karma Bulletin is accurate at the date of publication. However, Karma Automotive regularly updates technical information. Please check with your Karma Automotive Retailer and Karma Automotive service provider that the bulletin you intend to use contains the latest available information.

SC-17-20-08**MODEL: Karma Revero****DATE: June 2017****TITLE: Radiator Fan Inspection****Revised April 2018**

Activate fan again using Karma sync - "Fan 3" on high - verify vibration is no longer present

If the fan continues to display the concern create a TSS case and replace the fan and shroud assembly, using part number C131111106001.

Record the check label (fig.4) for both the new (this must be after February 2016 for replacement fans) and problem fans and provide the numbers and image in the TSS Case.

Replacement of the fan is claimed as normal warranty if required.



fig.4

Karma Automotive Bulletins and service documents are intended for use by experienced and trained Technicians. If you lack the skills, tools, equipment and a suitable workshop for any procedure described in this document, we suggest you leave such repairs to a Karma retailer and service provider. See your service provider for advice on whether your vehicle may benefit from the information contained within this document. The information contained in the Karma Bulletin is accurate at the date of publication. However, Karma Automotive regularly updates technical information. Please check with your Karma Automotive Retailer and Karma Automotive service provider that the bulletin you intend to use contains the latest available information.



Service Communication

SC-17-20-08

MODEL: Karma Revero

DATE: June 2017

TITLE: Radiator Fan Inspection

Revised April 2018

PARTS REQUIRED:

PART NUMBER	DESCRIPTION
N/A	N/A

SHOP SUPPLIES:

DESCRIPTION
N/A

SPECIAL TOOLS:

DESCRIPTION
N/A

CAUSAL PART:

PART NUMBER	DESCRIPTION
C131111106001	Fan and Shroud Assembly

LABOR CODES:

CODE	DESCRIPTION	TIME	DEFECT CODE
20-20-02-10	Fan and Shroud Inspection SC-17-20-08	0.8	20-20-02-14

SUBLET:

CODE	DESCRIPTION	AMOUNT
N/A		

WARRANTY DISPOSITION: This repair is covered under the New Vehicle Limited Warranty, in effect for five (5) years from the in-service date with no mileage limitation.

Karma Automotive Bulletins and service documents are intended for use by experienced and trained Technicians. If you lack the skills, tools, equipment and a suitable workshop for any procedure described in this document, we suggest you leave such repairs to a Karma retailer and service provider. See your service provider for advice on whether your vehicle may benefit from the information contained within this document. The information contained in the Karma Bulletin is accurate at the date of publication. However, Karma Automotive regularly updates technical information. Please check with your Karma Automotive Retailer and Karma Automotive service provider that the bulletin you intend to use contains the latest available information.