

1 03 12-18



Service Information Bulletin

SUBJECT	DATE
Output Shaft Seal	March 2018

Additions, Revisions, or Updates

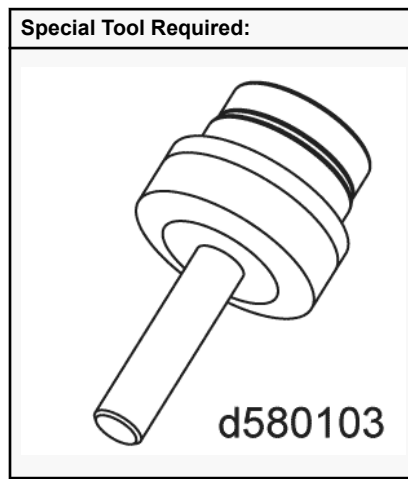
Publication Number / Title	Platform	Section Title	Change
DDC-SVC-MAN-0140	DT12	Installation of the Output Shaft Seal	New graphics.



13400 Outer Drive, West, Detroit, Michigan 48239-4001
 Telephone: 313-592-5000
www.demanddetroit.com

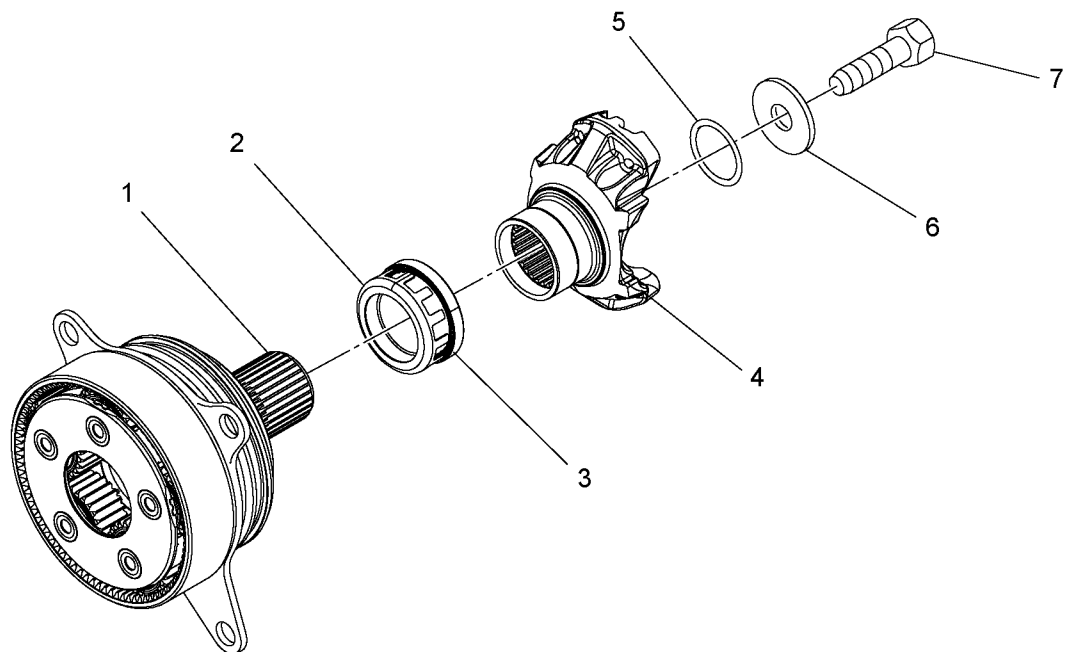
2 Installation of the Output Shaft Seal

Table 1.



Install as follows:

1. Using the A-box seal driver (special tool DDE W 715 589 08 15 00) with the adapter ring, or B-box seal driver (special tool DDE W 715 589 07 15 00), install a new output shaft seal (3) in the housing.

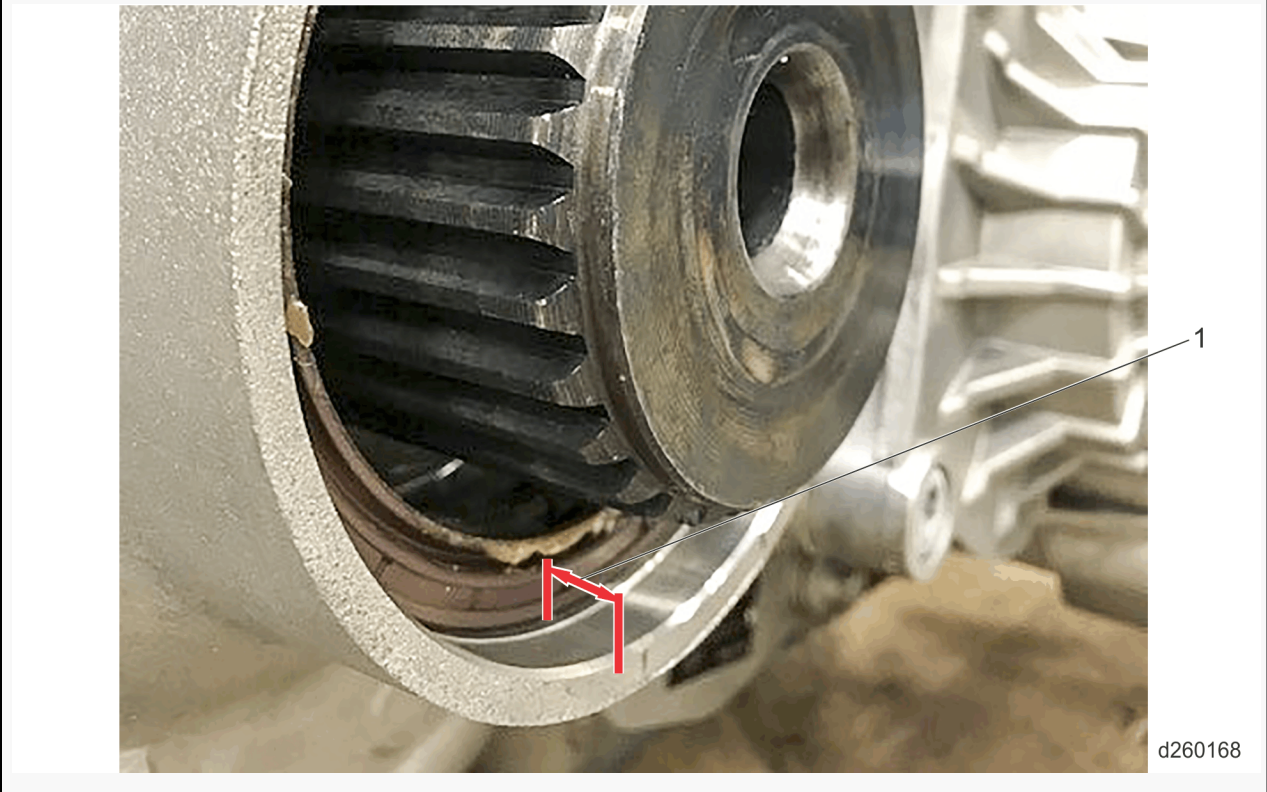


d260011

Table 2.

NOTE: Confirm the seal is installed all the way by inspecting the depth (1). The seal face should be installed beyond flush, from the rear face of the transmission case.

- For A-box transmissions, depth (1) should be approximately 12 mm (.47 in).
- For B-box transmissions, depth (1) should be approximately 15 mm (.59 in).



2. Install the yoke (4). See figure above. Refer to section "Installation of the Yoke or Flange".
3. Connect the driveline to the yoke. For instructions, see the Vehicle Workshop Manual.