

PREVOST

Instruction Sheet

IS-16103B

563261 & 563430 Generation 2 and 3 Slide-Out Module Replacement

H3-45 VIP: from 3-4417 up to 7-0771

XLII MTH: from 2-7781 up to 6-8805

REVISION : B THIS INSTRUCTION SHEET SUPERSEDES PREVIOUS VERSION.
05-01-2018 Added parts and instructions for generation 2 (GEN2) modules. Effective range was: H3-45 VIP from 4-4908 and XLII MTH from 5-8385

MATERIAL

Select one of three kits according to VIN and module *generation*: GEN3; GEN2 FRONT or GEN2 REAR.

| Kit #060481. GEN3 Front or Rear module replacement Applies to <i>H3-45 VIP from 4-4908 and XLII MTH from 5-8385</i> | | |
|---|-----------------------------------|-------|
| Part No. | Description | Qty |
| 060575 | BASE | 1 |
| 060579 | KEYPAD SUPPORT | 2 |
| 500539 | NUT HEX NYRT NX500 M4-0.7 | 8 |
| 502556 | WSH FL SS 4.3X9X.8 | 20 |
| 502841 | NUT HEX NYRT NX500 M5-0.8 | 4 |
| 560348 | KEYPAD FOR PRAN MODULE | 1 |
| 560349 | PRAN MODULE GEN3 | 1 |
| 560351 | WIRING FOR PRAN SLIDE OUT MODULE | 1 |
| 5000355 | SCR MA PAN PH SS 6-32X3/16 | 4 |
| 5001137 | WSH FL SS .203X.438X.06 | 4 |
| 5001996 | SCR MA PAN PH N500 M4-0.7X12 | 8 |
| 5060120 | GROMMET EDGING ADHESIVE .036-.062 | 12 in |
| IS-16103 | Instruction Sheet | 1 |
| FI-16103 | Feuille d'instructions | 1 |

| Kit #062328. GEN2 FRONT module replacement. <i>Applies to H3-45 VIP from 3-4417 up to 4-4907 and XLII MTH from 2-7781 up to 5-8384</i> | | |
|--|-----------------------------------|------|
| Part No. | Description | Qty |
| 060575 | BASE | 1 |
| 060579 | KEYBOARD SUPPORT | 2 |
| 500539 | NUT HEX NYRT NX500 M4-0.7 | 8 |
| 502556 | WSH FL SS 4.3X9X.8 (M4,#8) | 20 |
| 502841 | NUT HEX NYRT NX500 M5-0.8 | 4 |
| 560555 | WIRING FOR PRAN S/OUT MODUL GEN 2 | 1 |
| 560556 | KEYPAD FOR PRAN FRONT S/OUT GEN 2 | 1 |
| 560557 | PRAN MODULE GEN 2 | 1 |
| 560558 | PRAN J1939 INTERFACE CABLE | 1 |
| 5000355 | SCR MA PAN PH SS 6-32X3/16 | 4 |
| 5001137 | WSH FL SS .203X.438X.06 (M5,#10) | 4 |
| 5001996 | SCR MA PAN PH N500 M4-0.7X12 | 8 |
| 5060120 | GROMMET EDGING ADHESIVE .036-.062 | 12in |
| IS-16103 | Instruction Sheet | 1 |
| FI-16103 | Feuille d'instructions | 1 |

| Kit #062381 GEN2 REAR module replacement. <i>Applies to H3-45 VIP from 3-4417 up to 4-4907 and XLII MTH from 2-7781 up to 5-8384</i> | | |
|--|-----------------------------------|------|
| Part No. | Description | Qty |
| 060575 | BASE | 1 |
| 060579 | KEYBOARD SUPPORT | 2 |
| 500539 | NUT HEX NYRT NX500 M4-0.7 | 8 |
| 502556 | WSH FL SS 4.3X9X.8 (M4,#8) | 20 |
| 502841 | NUT HEX NYRT NX500 M5-0.8 | 4 |
| 560555 | WIRING FOR PRAN S/OUT MODUL GEN 2 | 1 |
| 560557 | PRAN MODULE GEN 2 | 1 |
| 560558 | PRAN J1939 INTERFACE CABLE | 1 |
| 560559 | KEYPAD FOR PRAN REAR S/OUT GEN 2 | 1 |
| 5000355 | SCR MA PAN PH SS 6-32X3/16 | 4 |
| 5001137 | WSH FL SS .203X.438X.06 (M5,#10) | 4 |
| 5001996 | SCR MA PAN PH N500 M4-0.7X12 | 8 |
| 5060120 | GROMMET EDGING ADHESIVE .036-.062 | 12in |
| IS-16103 | Instruction Sheet | 1 |
| FI-16103 | Feuille d'instructions | 1 |

NOTE

Material can be obtained through regular channels.

PROCEDURE



DANGER

Park vehicle safely, apply parking brake, stop engine. Prior to working on the vehicle, set the ignition switch to the OFF position and trip the main circuit breakers equipped with a trip button. On Commuter type vehicles, set the battery master switch (master cut-out) to the OFF position.

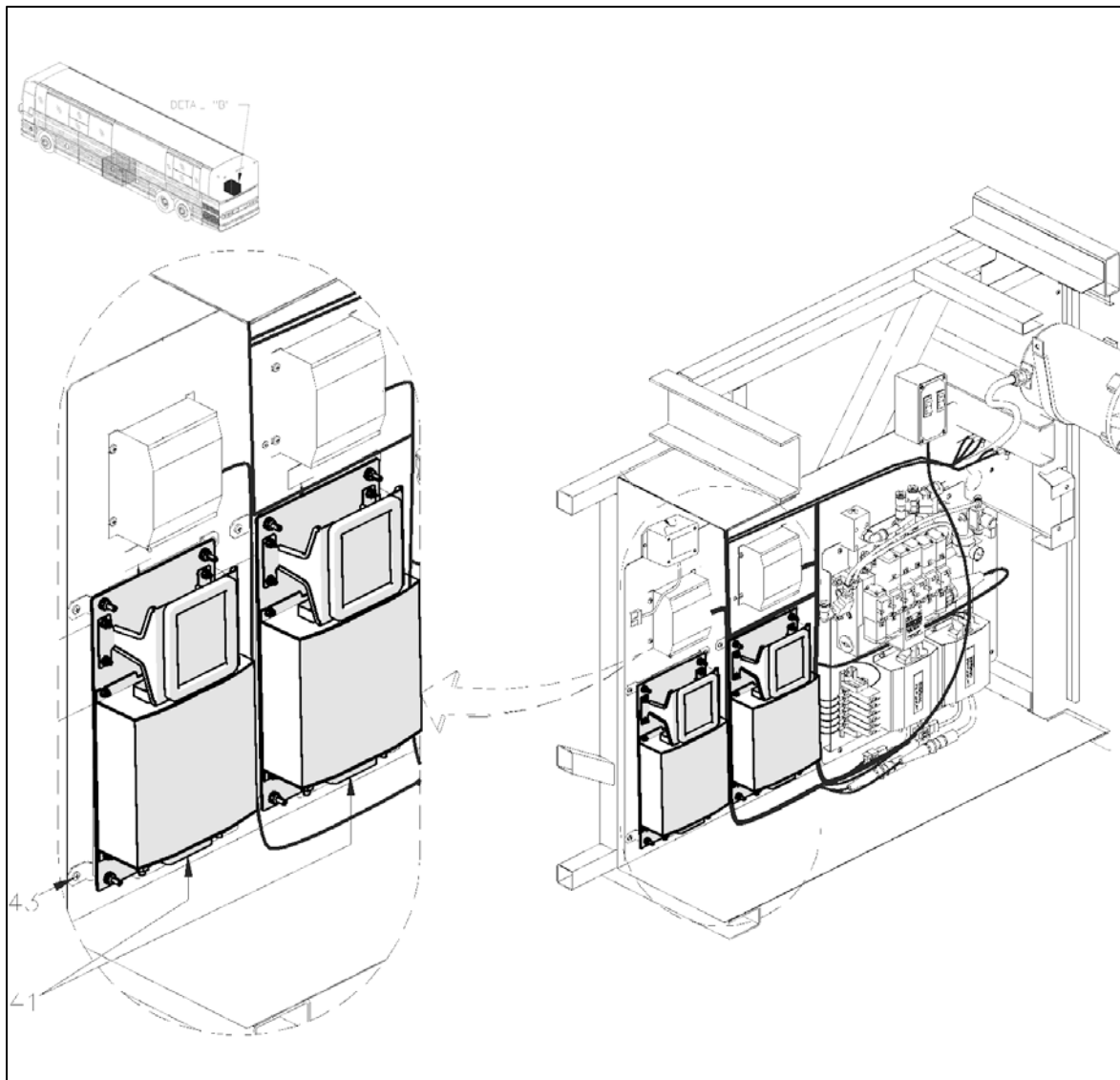


FIGURE 1: FINAL RESULT OVERVIEW (XLII MTH SHOWN)

Follow these steps to replace one existing slide-out module on your vehicle.



CAUTION

Before proceeding, make sure the slide-outs are retracted in and safety pins are applied.

Pre-Assembly:

1. On a table or bench, first install module GEN2 560557 or GEN3 560349 on base 060575 with following hardware:
 - 4X 5001996 M4 x 12 screw
 - 8X 502556 4mm Washer
 - 4X 500539 M4 nut

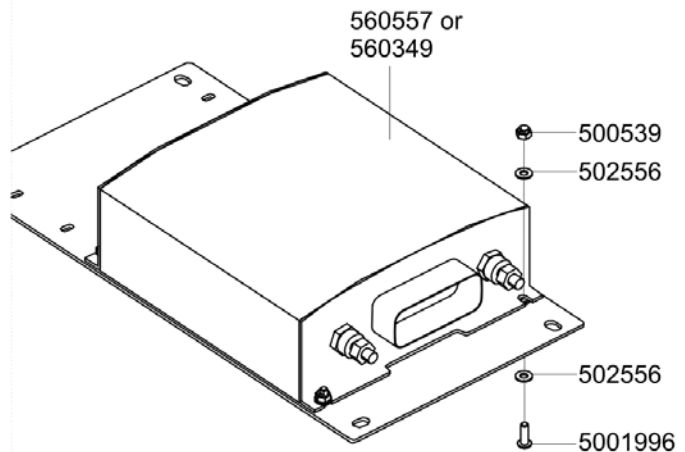


FIGURE 2 : INSTALLING MODULE ON BASE

2. Pre-assemble keypad supports 060579 on keypad GEN2 560556 or GEN3 560348 with the following hardware:
 - 4x 5000355 6-32 screw
 - 4x 502556 4mm washer

Next, cut 5060120 grommet edging in 4 pieces of 3 inch each and place along the support edges.

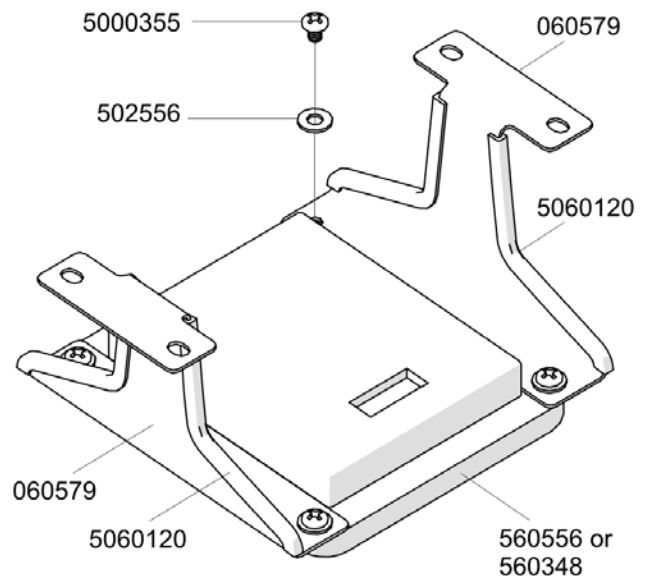


FIGURE 3: KEYPAD

3. Take new wiring harness 560555 GEN2 or 560351 GEN3 and connect output plugs *Gray and Black* to module *before installing the keypad*.
4. Connect keypad to harness.

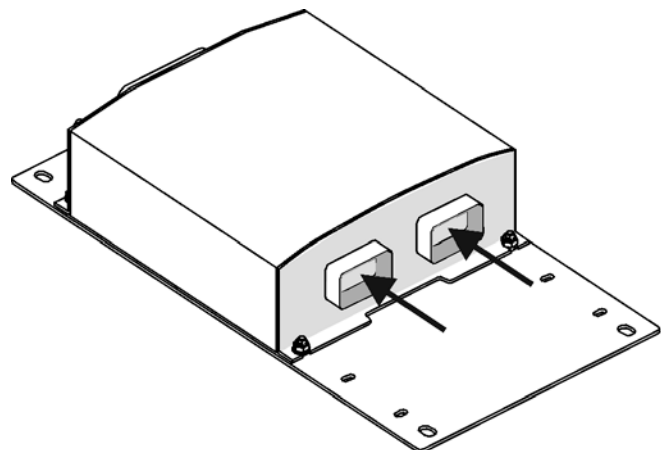


FIGURE 4: CONNECTING

5. Install keypad on base with following hardware:

- 4X 5001996 M4 x 12 screw
- 8X 502556 4mm Washer
- 4X 500539 M4 nut

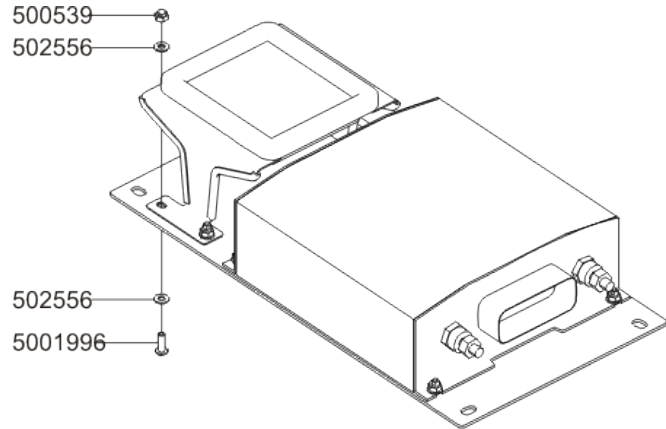


FIGURE 5: KEYPAD ON BASE

6. Connect big input plug on new module.
7. Connect 2 RED wire VBAT on 2 studs of new module

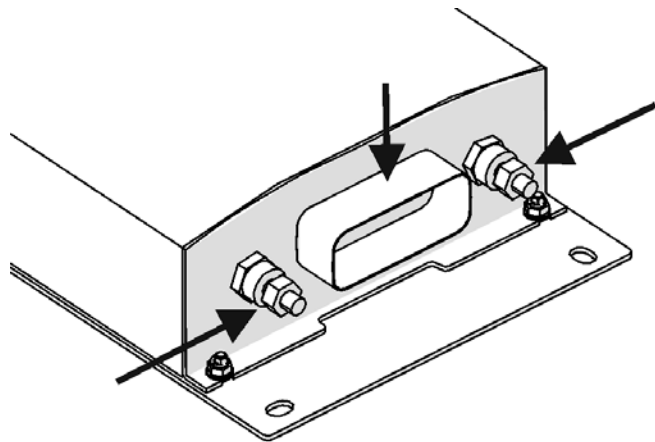


FIGURE 6: INPUT & POWER CONNECTIONS

8. Complete the wiring by connecting the **orange** connector from **keyboard** to one of the Y connector.
9. A patch cable is supplied with GEN 3 560351 or GEN 2 560555. Connect the **patch cable blue** connector to the second branch of the Y connector.
10. Connect the **end of line resistor** to the remaining branch of the Y connector.
11. Connect the **patch cable blue** connector to the second Y connector.
12. Connect the **orange** connector from the **module** to second branch of the Y connector.

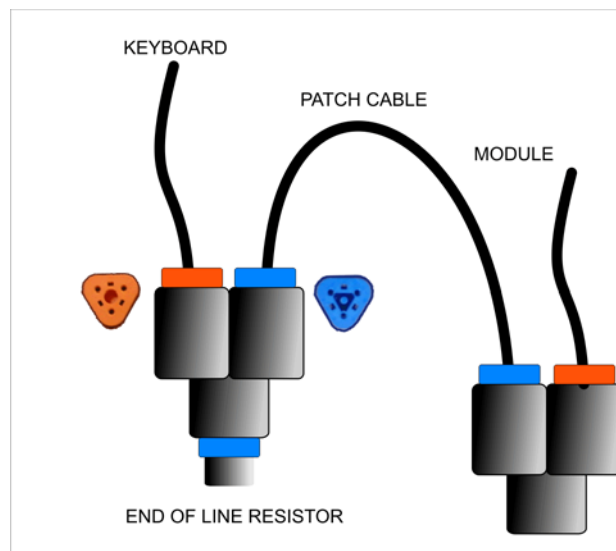


FIGURE 7 : 560555 / 560351 FINAL WIRING CONNECTIONS

13. On vehicle, unplug old module and remove from vehicle. Keep standoff brackets.
14. Install module(s) with the following hardware on standoff bracket studs:
 - 4X 5001137 3/16" washer
 - 4X 502841 M5 nut
15. Connect new harness GEN2: 560555 or GEN3: 560351 to vehicle harness.

Front Slide Out module connections:

J1 on CH36

J2 on CH37

J3 on CH38

J4 on CH39

Rear Slide Out module connections:

J1 on CH40

J2 on CH41

J3 on CH42

J4 on CH43

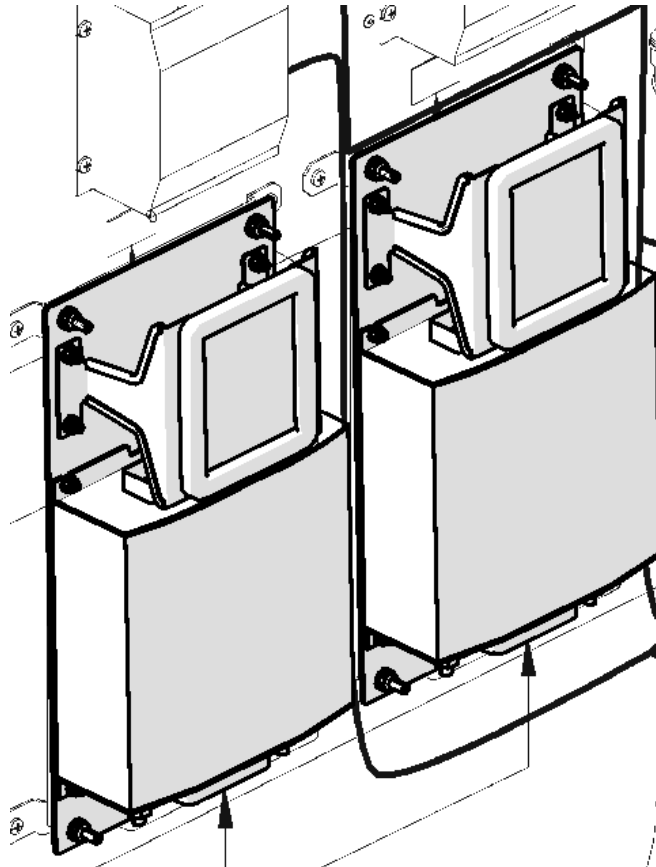


FIGURE 8: INSTALLING MODULE

16. GEN2 only: Connecting Front and Rear modules.

Use supplied J1939 interface cable 560558 to connect between the front and rear modules if present.

17. Confirm proper operation of slide-out

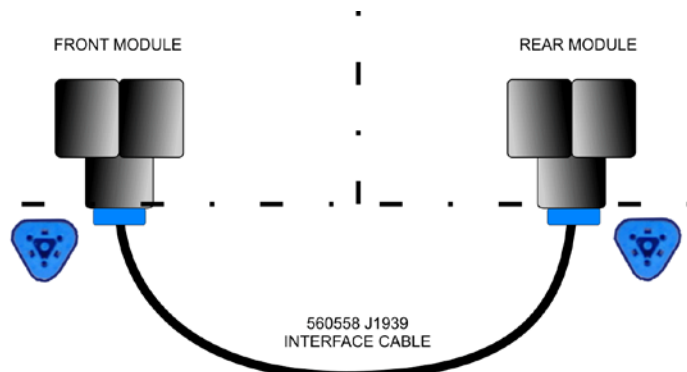


FIGURE 9: CONNECTING TWO MODULES WITH THE INTERFACE CABLE

PARTS / WASTE DISPOSAL

Discard waste according to applicable environmental regulations (Municipal/State[Prov.]/ Federal)