 <b>HYUNDAI</b> <b>Technical Service Bulletin</b>	GROUP <b>CAMPAIGN</b>	NUMBER <b>18-01-014-1</b>
	DATE <b>MAY, 2018</b>	MODEL(S) <b>SONATA (LFa)</b>
<b>SUBJECT:</b> 2018 SONATA D-AUDIO SOFTWARE UPDATE FOR LCD OVERLAY (SERVICE CAMPAIGN T2W)		

This bulletin supersedes TSB# 18-01-014 to include the Notice on the front page.

**★ IMPORTANT**

**\*\*\*\*\*DEALER STOCK ONLY\*\*\*\*\***

Dealers must perform this Service Campaign on all affected vehicles prior to customer retail delivery.

When a vehicle arrives at the Service Department, access Hyundai Motor America's "Warranty Vehicle Information" screen via WEBDCS to identify open Campaigns.

**Description:** This bulletin describes the procedure for updating the Display Audio (D-Audio) System Software for the 2018 Model Year Sonata (LFa). This update prevents the LCD Overlay/Display overlapping condition (previous screen images/icons showing on current screen).

**NOTICE**

If the symptom is already present, the S/W update will not resolve the concern.

- If the symptom is already present ➡ replace the (D-Audio) Head Unit.
- If the symptom is not present ➡ perform the following S/W update procedure.


The update will take approximately 20 minutes to complete.

**[LCD Overlay / Display Overlapping Symptom]**



<b>Applicable Vehicles:</b>	Certain 2018MY Sonata (LFa) – Non Hybrid Equipped with Display Audio (D-Audio 7" touchscreen)
-----------------------------	---

Circulate To: General Manager, Service Manager, Parts Manager, Warranty Manager, Service Advisors, Technicians, Body Shop Manager, Fleet Repair

Part Image	Part	Parts Description
	96100-18LFA	<b>S/W Update USB (D-Audio Vehicles) 7" Touchscreen</b>

**PARTS INFORMATION:** Two USB sticks have been sent to each dealership.

**WARRANTY INFORMATION:**

MODEL	OPCODE	OPERATION	OPTIME	Causal P/N	NATURE	CAUSE
Sonata (LFA) Non-Hybrid Equipped w/D-Audio	80CA02R0	D-Audio S/W UPDATE	0.3 M/H	96160-C2UA04X	M14	ZZ3

**NOTE:** Submit Claim on Campaign Claim Entry Screen.

**NOTE 2:** If a part is found in need of replacement while performing Campaign T2W, and the affected part is still under warranty, submit a separate claim using the same Repair Order. If the affected part is out of warranty, submit a Prior Approval Request for goodwill consideration prior to performing the work.

**Service Procedure:**



**Do not remove the S/W UPDATE USB or turn off the ignition during the update. Otherwise, the update will not be completed properly.**

1. **Software version check:**

Press the **ENGINE START STOP** button (A) to turn ACC "ON".

OR

Depress the brake pedal and press the **ENGINE START STOP** button (A) to start the vehicle.



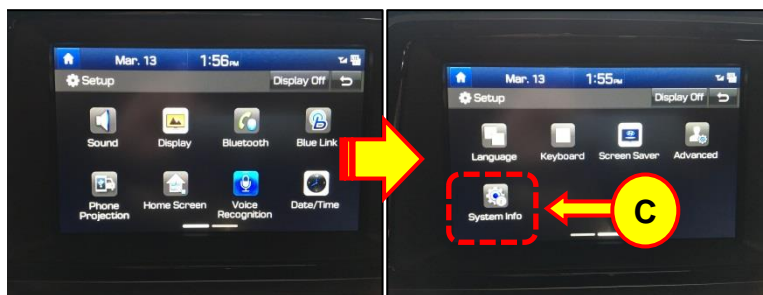
**Park vehicle in a well ventilated area during the update process.**



2. Press the 'SETUP' button (B) to enter the Setup menu.

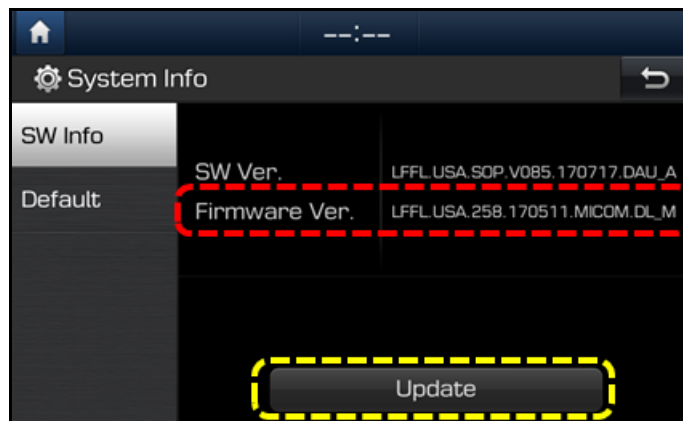


3. Swipe right and press the 'System Info' icon (C).



4. In the SW Info screen, check the **FIRMWARE Version:**

Proceed with update if the OLD/Original FIRMWARE Version is earlier than the NEW Firmware Version provided in the table below:



Model	NEW Firmware Version
<b>LFa</b>	LFFL.USA.258.180103.MICOM.DL_M OR LFFL.USA.258.180103.MICOM.D_M

- If the version is equal to or later than the NEW FIRMWARE version above, then no update is needed.
- Otherwise, if the Firmware Version is earlier (less than) the NEW Firmware Version in the table above, proceed to step 5.

5. Insert the update USB in the slot (D).

## NOTICE

Do not remove the update USB stick, or turn OFF the ignition during the update.

In case the vehicle is turned OFF during the update process, do not remove the USB stick. The update will resume after the vehicle is restarted.

If update does not resume, return to the "System Info" menu using steps 2-3 and touch the Update icon to initiate the update again.

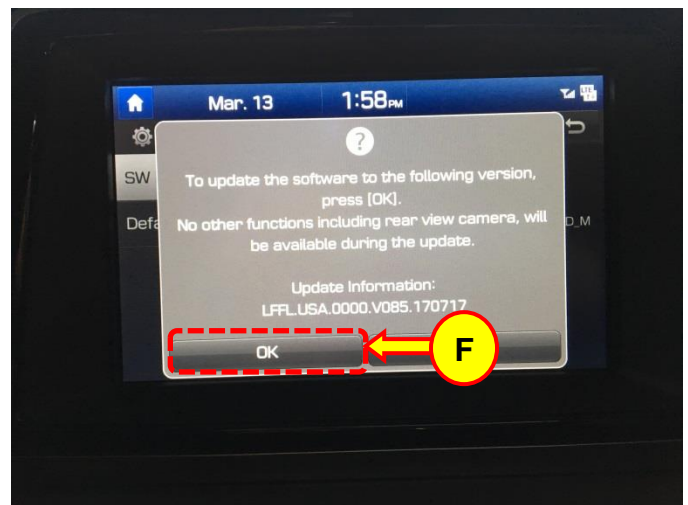


6. Press the "Update" icon (E) at the bottom of the screen to proceed with the software update.



7. Select the 'OK' icon (F) on pop-up to begin the update.

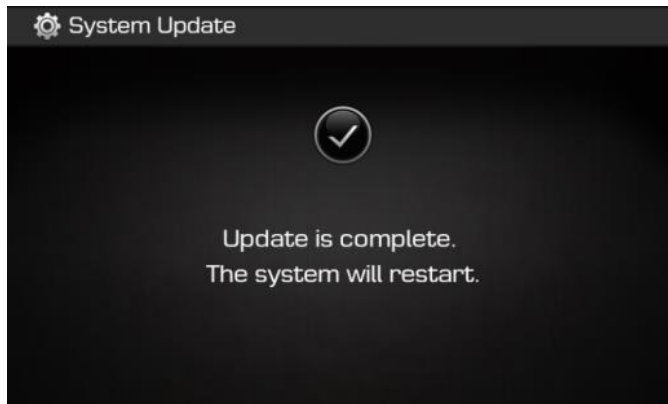
Total software update time: ~ 20 minutes.



- 8. The system will reboot automatically after the “The system will restart” message appears.

**NOTICE**

**The software update is completed after the system reboots and the Disclaimer or the Home screen is displayed.**



- 9. Once the update has completed, and the system has restarted, confirm the NEW SW and Firmware Versions using steps 2-3 and the table listed below.

**NOTICE**

**The SW version will also change after the update is completed. Please ensure both the SW and Firmware versions match the versions provided in the table below.**



Model	NEW SW Version	NEW Firmware Version
LFa	LFFL.USA.SOP.V085.170717	LFFL.USA.258.180103.MICOM.DL_M OR LFFL.USA.258.180103.MICOM.D_M

- 10. Remove the USB stick from the slot.