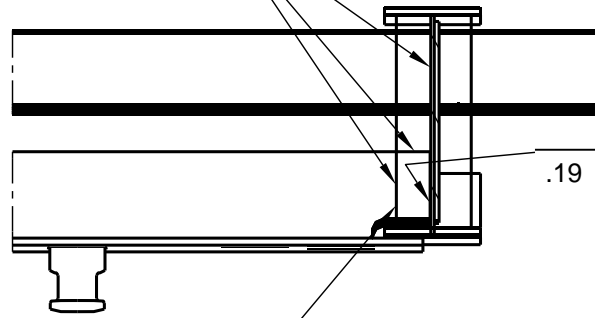


STIFFENER
WELD TYP.

.19



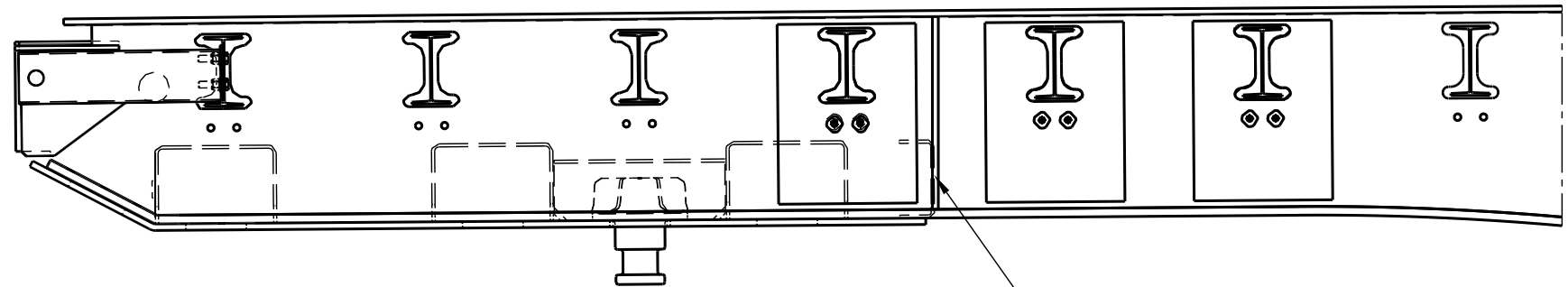
REMOVE WELD
AND ADD FILLET

.19

0.25" X 2" STIFFENER
INSIDE AND OUT

Section view C-C
Scale: 1:10

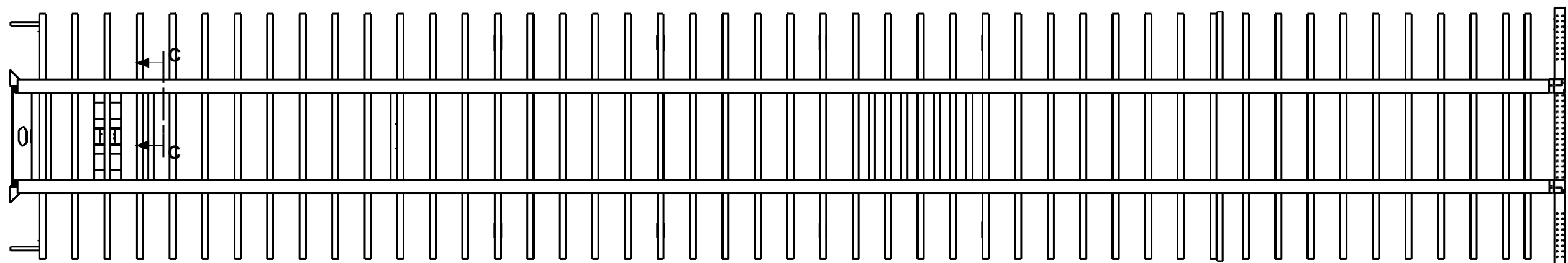
1. REMOVE INTERNAL FILET WELD ON COUPLER CROSSMEMBER.
2. REPLACE FILET WELD AND ADD STIFFENER IN SECTION C-C.
3. GRIND V AT CRACK ON EXTERIOR WEB AND WELD AS SHOWN.



Front view

.19

V-GROOVE OUTSIDE WEB AT
CRACK AND FILLET WELD



Top view
Scale: 1:44



Great Dane Trailers

A Division of Great Dane Limited Partnership

REV. STATEMENT:

CN

ALL DIMENSIONS ARE IN INCHES
TOLERANCES TO BE ± 0.050
UNLESS OTHERWISE NOTED.

DWN: DLB

12/11/17

CN 2006 WEIGHT

SHEET:

1 OF 1

DWG BEAM REPAIR
TITLE:

DWG NO: 17700101_16480155-001

REV: D