



# Service Bulletin

File in Section: -

Bulletin No.: 18-NA-025

Date: January, 2018

## TECHNICAL

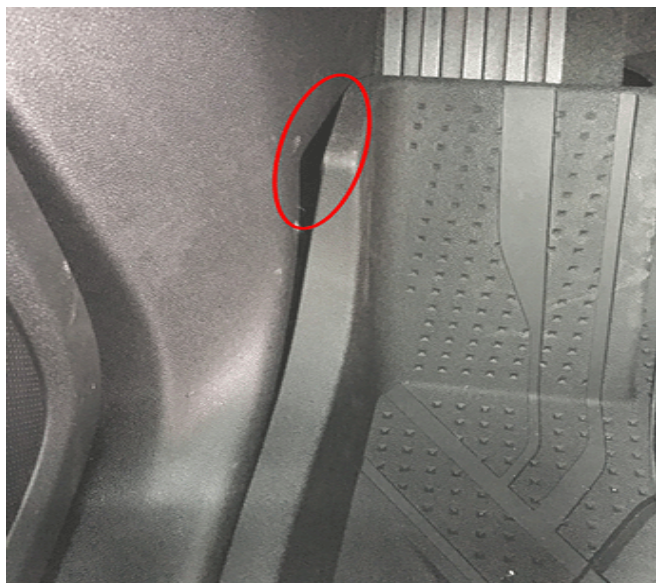
**Subject:** Improperly Fit Floor Liners

Brand:	Model:	Model Year:		VIN:		Engine:	Transmission:
		from	to	from	to		
Cadillac	Escalade	2018	2018				
Chevrolet	Tahoe						
GMC	Yukon						

<b>Involved Region or Country</b>	North America and N. A. Export Markets
<b>Condition</b>	Some customers may comment that the floor liners do not fit properly or have a gap along the sides.
<b>Cause</b>	This condition may be caused by the wiring harness behind the floor carpet or the garnish trim causing the panels to push inwards, creating a gap in the liner.
<b>Correction</b>	If the floor liners have been validated to not fit properly, inspection of the instrument panel wiring harness positioning and/or removal of material from the floor liners may be required to achieve desired fit.

### Service Procedure

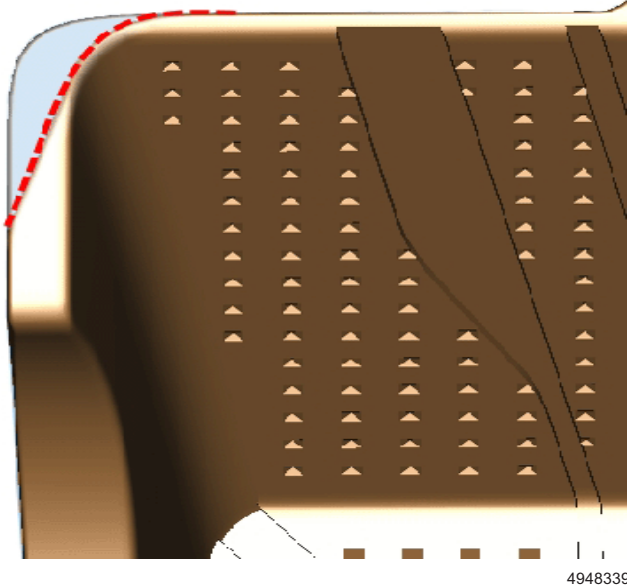
#### Drivers Side Floor Liner



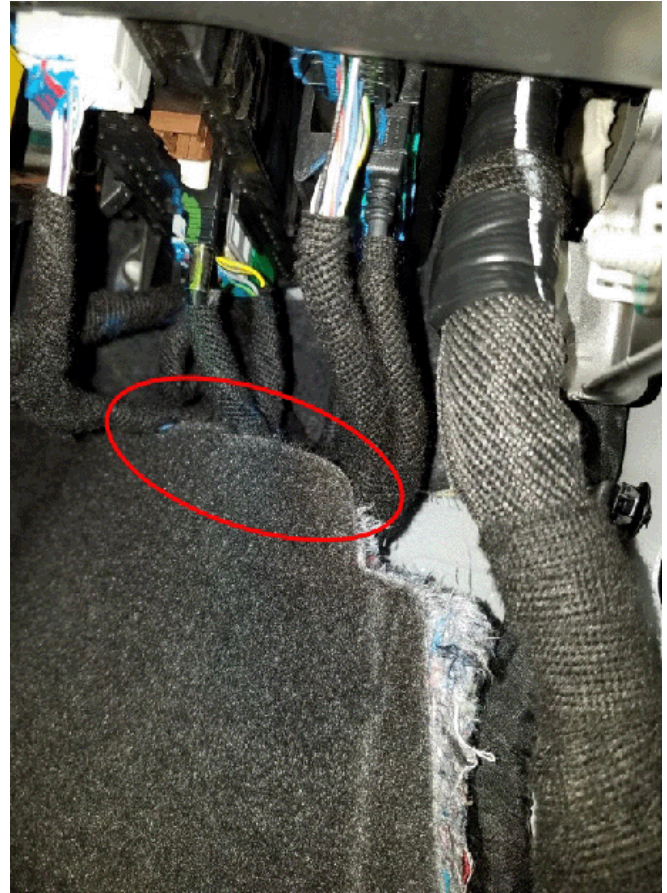
4944315

As shown in the graphic above, some vehicles will have the wiring harness routed incorrectly behind the drivers side trim garnish causing the floor liner to appear in a way as if the liner is incorrect for the vehicle.

1. Remove the front side door sill garnish molding.
2. Validate the wiring harness is routed properly behind the trim garnish.
3. Install the front side door sill garnish molding.
4. Validate that the liner sits flush to the side panel and carpet.
  - If the re-positioning of the wiring harness from behind the trim garnish centers the floor liner, no further repairs are needed.
  - If the re-positioning of the wiring harness from behind the trim garnish does not center the floor liner, proceed with procedure.



As shown in the graphic above, some vehicles will have the wiring harness routed incorrectly behind the passenger side carpeting causing the carpet to push the floor liner in a way to appear as if the liner is incorrect for the vehicle.



4946609

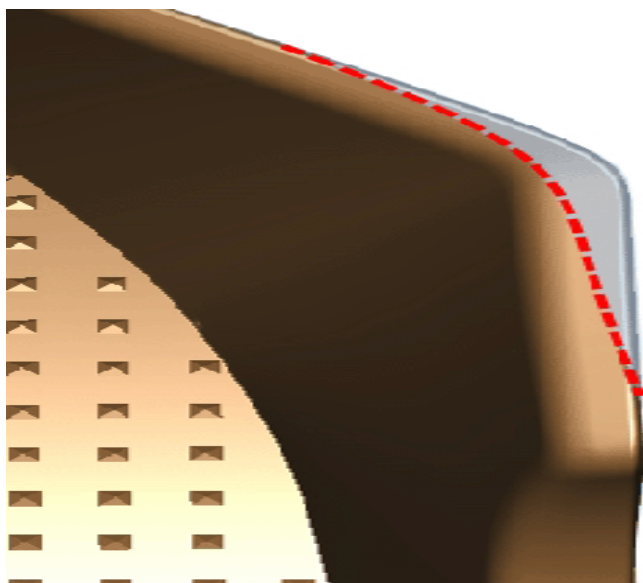
5. Using care, trim the excess material from the floor liner.
6. Position the liner and check for proper fit.

#### Passenger Side Floor Liner



4951487

1. Validate the wiring harness is above the carpet.
2. Lay the carpet so that it is flush to the floor.
3. Validate that the liner sits flush to the side panel and carpet.
  - If the re-positioning of the wiring harness from behind the carpet centers the floor liner, no further repairs are needed.
  - If the re-positioning of the wiring harness from behind the carpet does not center the floor liner, proceed with procedure.



4948353

4. Using care, trim the excess material from the floor liner.
5. Position the liner and check for proper fit.

## Parts Information

No parts are required for this repair.

## Warranty Information

For vehicles repaired under the Bumper-to-Bumper coverage (Canada Base Warranty coverage), use the following labor operation. Reference the Applicable Warranties section of Investigate Vehicle History (IVH) for coverage information.

Labor Operation	Description	Labor Time
0580328*	Validate Wiring Harness Positioning	0.3 hr
Add	Trim Floor Liner	0.2 hr (per side)
*This is a unique Labor Operation for Bulletin use only.		

Version	1
Modified	Released January 24, 2018

GM bulletins are intended for use by professional technicians, NOT a "do-it-yourselfer". They are written to inform these technicians of conditions that may occur on some vehicles, or to provide information that could assist in the proper service of a vehicle. Properly trained technicians have the equipment, tools, safety instructions, and know-how to do a job properly and safely. If a condition is described, DO NOT assume that the bulletin applies to your vehicle, or that your vehicle will have that condition. See your GM dealer for information on whether your vehicle may benefit from the information.



WE SUPPORT VOLUNTARY  
TECHNICIAN  
CERTIFICATION