

**NA_MACK_Vehicle_Range****NA_MACK_Vehicle_Range**

LR , MRU , Anthem , CHU , CXU , GU

Engine family

Engine family

MP7 , MP8

Emission Standard

Emission Standard

2018 , OBD2017 , US17 GHG

**** SOLUTION ****

Title (customer effect)

Mack Chassis - Diagnostic Trouble Code (DTC) P02FA Illuminating The Malfunction Indicator Lamp (MIL) - **US17+OBD16 And US17+OBD18 (GHG17) Emissions (With Common Rail Fuel System), Commonly Model Years 2018 And 2019**

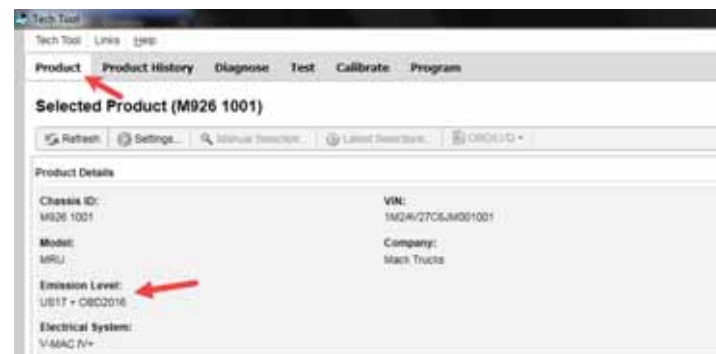
Cause

US17 chassis may generate code P02FA, with Guided Diagnostics (GD) determining there is No Fault Found (NFF)

Solution

Verify the chassis emissions level

- Details can be found in the Product Details box on the Product tab in PTT as seen below:

**Once Emissions Level is Confirmed:**

- Software improvements have been released to address this code. Refer to [FSB284-067 Engine Control Module \(ECM\) and Aftertreatment Control Module \(ACM\) Reprogramming](#).
- This bulletin is current as of 17 April 2018.

Campaign code

FSB284-067

Solution visibility

Dealer distribution**Function(s)/component(s) affected**

Function affected

FSB , air supply , 1 1 0 EMS , Diagnostic tool

Function Group

Function Group 25 inlet and exhaust systems , 28 ignition and control system

Customer effect

Main customer effect diagnostics/methodology , fault code/display

Fluid implicated air

Lights/Messages on information display  Driver's information warning pictogram

Fault code(s)

OBD 2013 Diagnostic Trouble Codes P02FA

Conditions

Vehicle operating mode when driving , when stationary

Frequency of occurrence of problem random

Administration

Author RU4469V

Dealer ID RU4469V

Last modified by RU4469V

Creation date 17-04-2018 22:04

Date of last update 17-04-2018 22:04

Review date 15-08-2018 00:08

Status Published