

Classification:

Reference:

 COPYRIGHT © NISSAN NORTH AMERICA, INC.
 Date:

BT18-004

ITB18-017

April 13, 2018

2019 QX50; CENTER CONSOLE SLIDING SHUTTER INFORMATION

APPLIED VEHICLES: 2019 QX50 (J55)

SERVICE INFORMATION

The 2019 QX50 comes from the factory with an instructional label on the sliding shutter that covers the center console cup holders (see Figure 1).

This label is installed to provide instructions on how to operate the sliding shutter.

DO NOT remove this label during PDI or while the vehicle is in retailer inventory.

Leave this label attached. The vehicle owner can remove this label after they read and understand the slide operation.

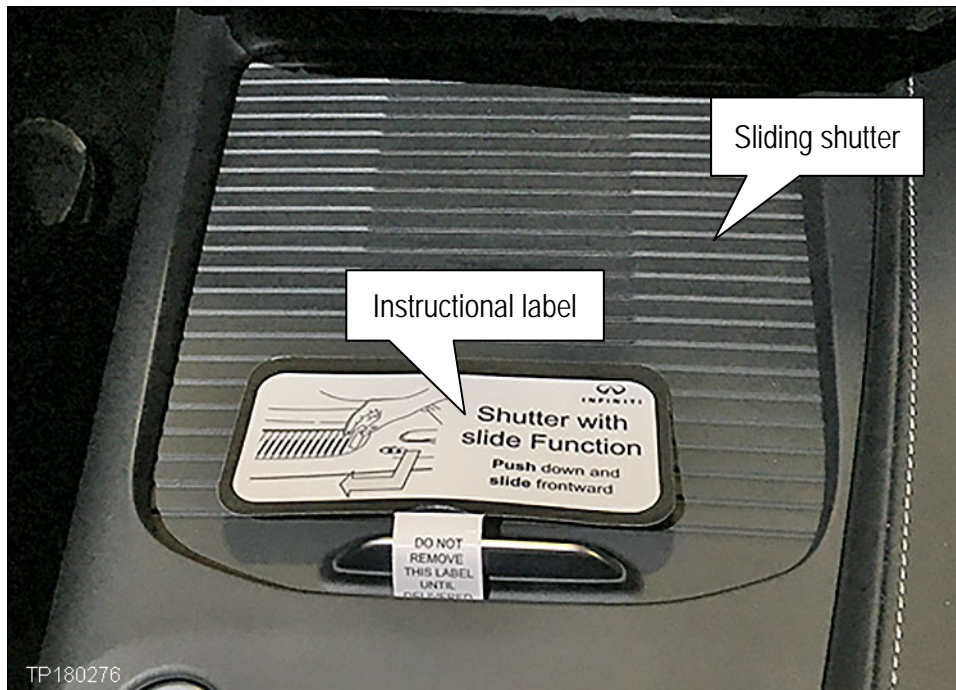


Figure 1

NOTE: The Infiniti New Vehicle Limited Warranty does not cover incidents due to lack of vehicle maintenance and/or physical damage. Refer to the Assurance Products Resource Manual (APRM) for guidelines on warranty coverage. The vehicle owner's manual contains the complete details regarding the limited warranty.

Refer to the next page for additional sliding shutter information.

Infiniti Bulletins are intended for use by qualified technicians, not 'do-it-yourselfers'. Qualified technicians are properly trained individuals who have the equipment, tools, safety instruction, and know-how to do a job properly and safely. NOTE: If you believe that a described condition may apply to a particular vehicle, DO NOT assume that it does. See your Infiniti retailer to determine if this applies to your vehicle.

Sliding Shutter Operation

To open:

First, gently push down on the handle to release the latch.

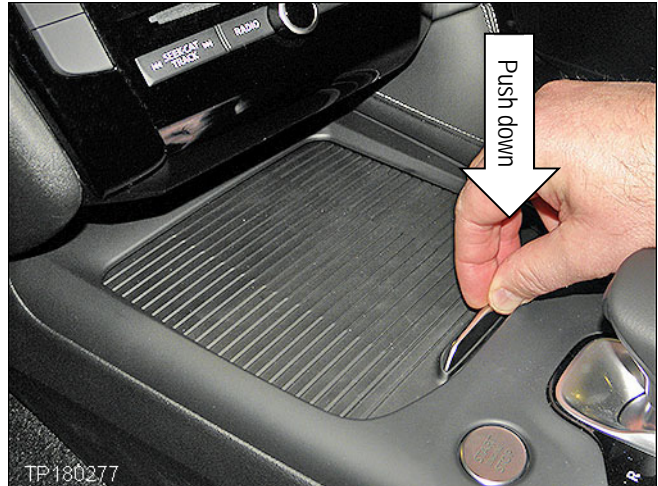


Figure 2

Then push/slide the shutter forward to open.

CAUTION:

- Do not force the sliding shutter open, or breakage may occur.
- The Infiniti New Vehicle Limited Warranty does not cover physical damage.



Figure 3

To close:

Pull the handle rearward until you feel the latch engage.

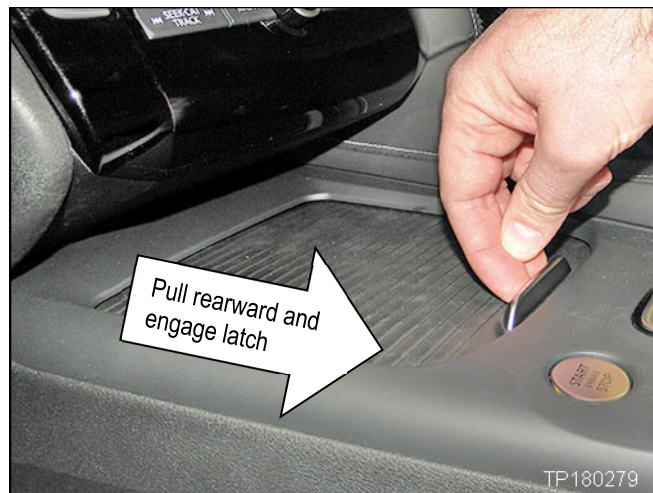


Figure 4