



# SERVICE BULLETIN

Classification: EC16-026b	Reference: NTB16-086b	Date: April 19, 2018
------------------------------	--------------------------	-------------------------

## 2013-2014 SENTRA; ENGINE TURNS OFF OR HESITATES WHEN ACCELERATING FROM A STOP DURING HOT AMBIENT TEMPERATURES (100° F OR MORE)

This bulletin has been amended to update Table A. No other changes were made. Discard previous versions of this bulletin.

**APPLIED VEHICLES:** 2013-2014 Sentra (B17)

### IF YOU CONFIRM

The engine turns OFF or hesitates when accelerating from a stop during hot ambient temperatures (100° F or more),

### AND

The engine is able to be restarted.

### ACTION

1. Inspect the color of the PCV valve, and replace if the color is orange (see Figure A on page 2).
2. Refer to step 6 in the Reprogram ECM section of the SERVICE PROCEDURE to confirm if reprogramming is needed.
3. If needed, perform ECM reprogram.

**IMPORTANT:** The purpose of ACTION (above) is to give you a quick idea of the work you will be performing. You **MUST** closely follow the entire SERVICE PROCEDURE as it contains information that is essential to successfully completing this repair.

Nissan Bulletins are intended for use by qualified technicians, not 'do-it-yourselfers'. Qualified technicians are properly trained individuals who have the equipment, tools, safety instruction, and know-how to do a job properly and safely. NOTE: If you believe that a described condition may apply to a particular vehicle, DO NOT assume that it does. See your Nissan dealer to determine if this applies to your vehicle.

## SERVICE PROCEDURE

### Inspect / Replace PCV Valve

1. Open the engine hood and locate the PCV valve.
2. Inspect the color of the PCV valve.

#### **If the PCV valve is orange, as shown in Figure A:**

- Replace the PCV valve.
- If needed, refer to the Electronic Service Manual (ESM), section EM-Engine Mechanical, for replacement information.
- Use the new PCV valve listed in the Parts Information.
- The new PCV valve is “black” color.

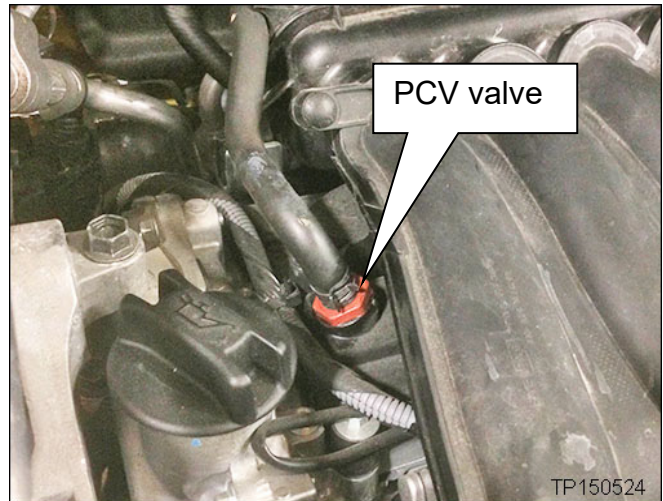


Figure A

#### **If the PCV valve is black:**

- DO NOT replace – continue with the SERVICE PROCEDURE.

### Reprogram the ECM

#### **NOTE:**

- Most instructions for reprogramming with CONSULT-III plus (C-III plus) are displayed on the CONSULT PC screen.
- If you are not familiar with the reprogramming procedure, click here. This will link you to the "CONSULT- III plus (C-III plus) ECM Reprogramming" general procedure.
- Take the vehicle for a 10 minute drive in order to meet the following Idle Air Volume Learn (IAVL) conditions:
  - Engine coolant temperature: 70 -100°C (158 -212°F)
  - Battery voltage: More than 12.9V (At idle)
  - Transmission: Warmed up
- After reprogramming is complete, you will be required to perform Idle Air Volume Learn. The above condition are required for Idle Air Volume Learn to complete.



Figure B

**CAUTION:**

- Connect the GR8 to the 12V battery and select ECM Power Supply Mode. If the vehicle battery voltage drops below 12.0V or above 15.5V during reprogramming, the ECM may be damaged.
- Be sure to turn OFF all vehicle electrical loads. If a vehicle electrical load remains ON, the ECM may be damaged.
- Be sure to connect the AC Adapter. If the CONSULT PC battery voltage drops during reprogramming, the process will be interrupted and the ECM may be damaged.
- Turn OFF all external Bluetooth® devices (e.g., cell phones, printers, etc.) within range of the CONSULT PC and the VI. If Bluetooth® signal waves are within range of the CONSULT PC during reprogramming, reprogramming may be interrupted and the ECM may be damaged.

1. Connect the CONSULT PC to the vehicle to begin the reprogramming procedure.
2. Start C-III plus.
3. Wait for the plus VI to be recognized.
  - The serial number will display when the plus VI is recognized.
4. Select **Re/programming, Configuration**.

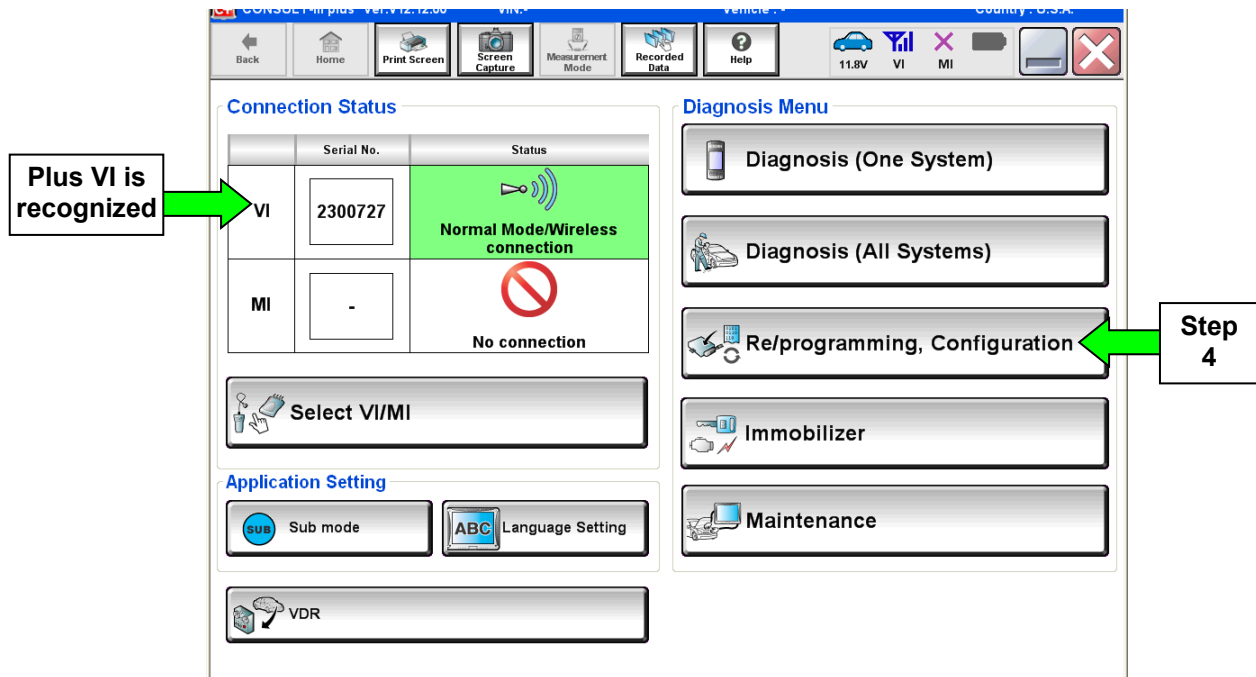


Figure 1

5. Follow the on-screen instructions and navigate the C-III plus to the screen shown in Figure 2 on the next page.

6. When you get to the screen shown in Figure 2, confirm this bulletin applies as follows.

A. Find the ECM **Part Number** and write it on the repair order.

**NOTE:** This is the current ECM Part Number (P/N).

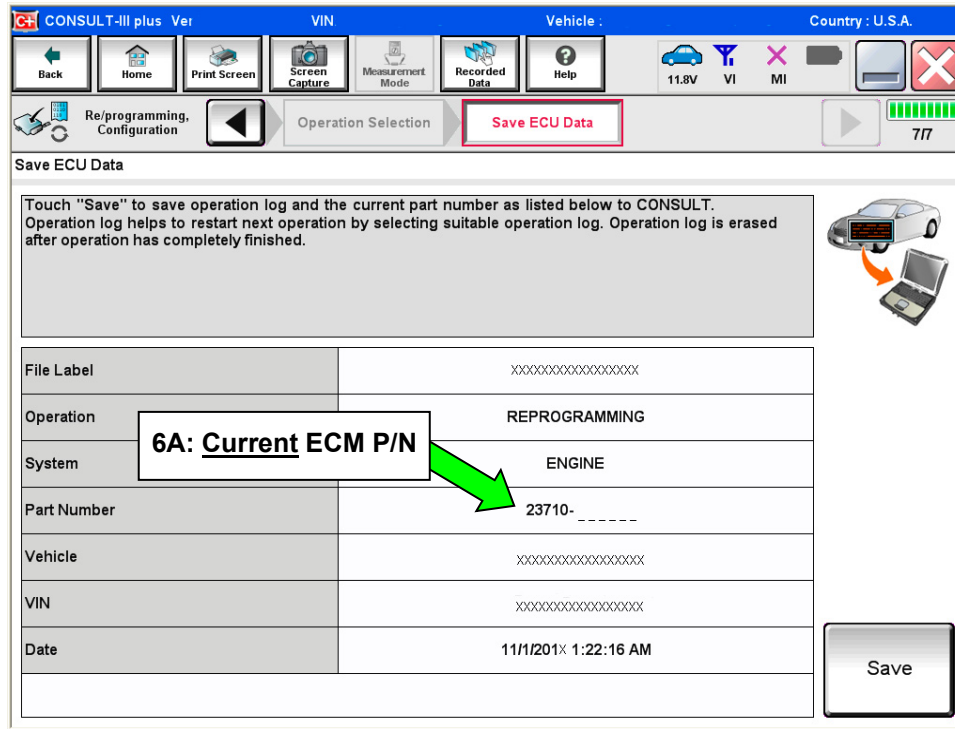


Figure 2

B. Compare the P/N you wrote down to the numbers in the **Current ECM Part Number** column in **Table A** on the next page.

- If there is a match, continue with the reprogramming procedure.
- If there is not a match, reprogramming is not needed.

**Table A**

<b>MODEL</b>	<b>CURRENT ECM PART NUMBER: 23710-</b>
2013 Sentra	3RH0A, 3RH0B, 3RH0D 3RH1A, 3RH1B, 3RH1D 3RH2A, 3RH2B, 3RH2D, 3RH2E 3RH3A, 3RH3B, 3RH3D, 3RH3E 3RJ0B, 3RJ1B 3SG8B, 3SG8C, 3SG8E 3SG9B, 3SG9C, 3SG9E 3SZ0D, 3SZ0E 3SZ1D, 3SZ1E
2014 Sentra	3RT0B, 3RT1B 3RU6B, 3RU6C, 3RU6E 3RU7B, 3RU7C, 3RU7E 3RU8B, 3RU8C, 3RU8E 3RU9B, 3RU9C, 3RU9E 3SR6A, 3SR7A 9AM4D, 9AM4E 9AM5D, 9AM5E

7. Follow the on-screen instructions to navigate C-III plus and reprogram the ECM.

**NOTE:**

- In some cases, more than one new P/N for reprogramming is available.
  - If there is more than one new P/N, the screen in Figure 3 displays.
  - Select and use the reprogramming option that **does not** have the message “Caution! Use ONLY with NTBXX-XXX”.
- If you get this screen and it is blank (no reprogramming listed), it means there is no reprogramming available for this vehicle.

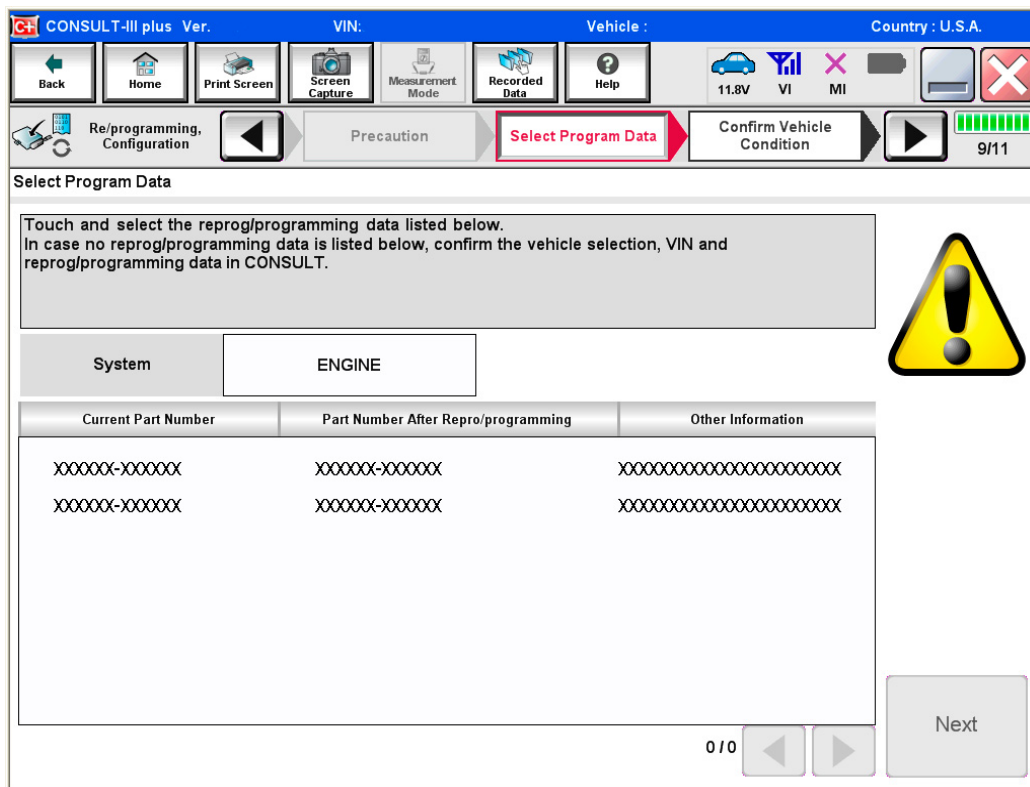


Figure 3

8. When the screen in Figure 4 displays, reprogramming is complete.

**NOTE:** If the screen in Figure 4 does not display (which indicates that reprogramming did not complete), refer to the information on the next page 8.

9. Disconnect the battery charger from the vehicle.

10. Select **Next**.

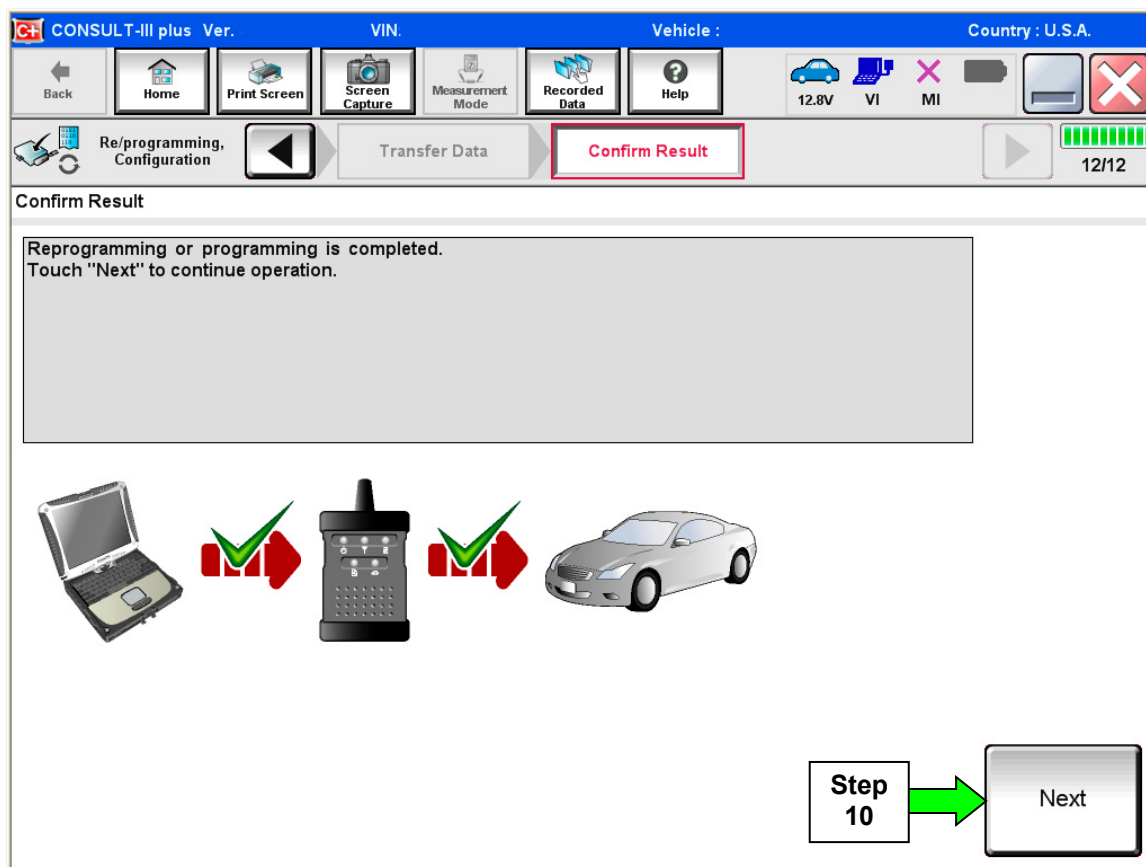


Figure 4

**NOTE:**

- In the next steps, starting on page 9, you will perform Throttle Valve Closed Position, Idle Air Volume Learn, Accelerator Closed Position, and DTC erase.
- These operations are required before C-III plus will provide the final reprogramming confirmation report.

## Reprogram Recovery:

**Do not disconnect plus VI or shut down Consult III plus if reprogramming does not complete.**

If reprogramming does not complete and the “!?” icon displays as shown in Figure 5:

- Check battery voltage (12.0–15.5 V).
- Ignition is ON, engine OFF.
- External Bluetooth® devices are OFF.
- All electrical loads are OFF.
- **Select retry and follow the on screen instructions.**
- “Retry” may not go through on first attempt and can be selected more than once.

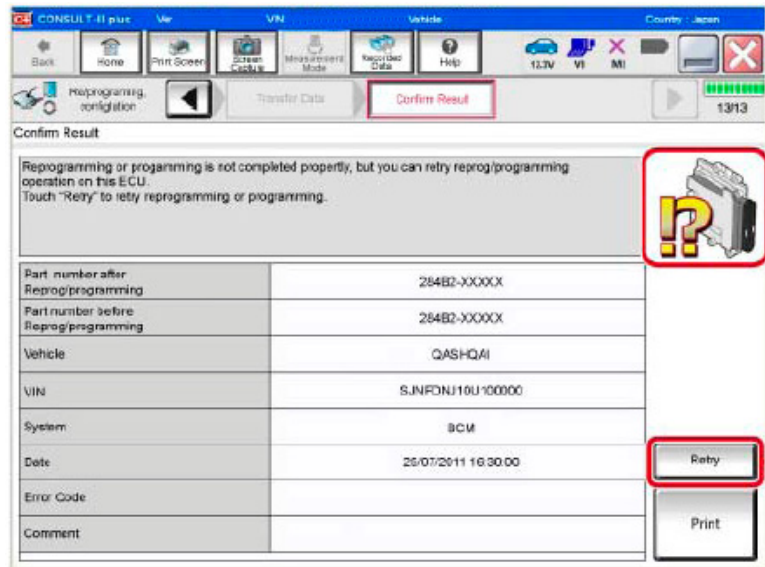


Figure 5

If reprogramming does not complete and the “X” icon displays as shown in Figure 6:

- Check battery voltage (12.0 – 15.5 V).
- CONSULT A/C adapter is plugged in.
- Ignition is ON, engine OFF.
- Transmission is in Park.
- All C-III plus / VI cables are securely connected.
- All C-III plus updates are installed.
- **Select Home, and restart the reprogram procedure from the beginning.**

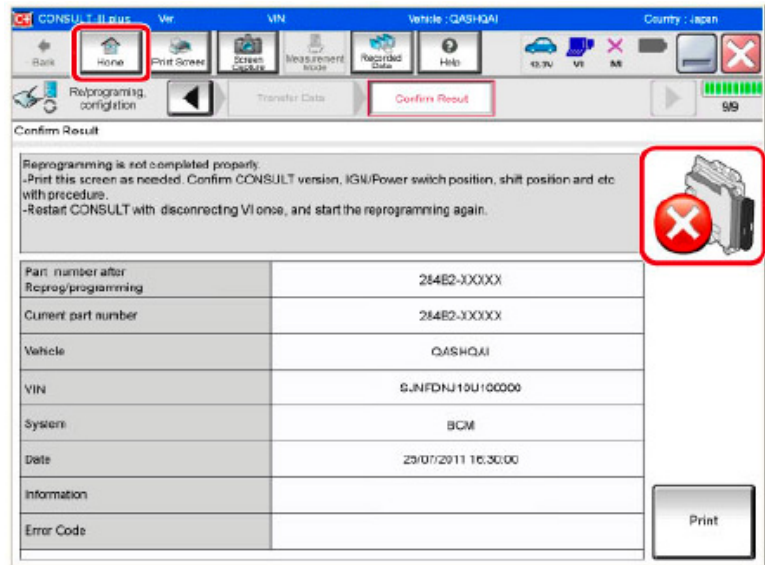


Figure 6



11. Follow the on-screen instructions to perform the following:

- **Throttle Valve Closed Position.**
- **Idle Air Volume Learn (IAVL).**

**NOTE:**

- **Listed below are common conditions required for IAVL to complete.**
- **If IAVL does not complete within a few minutes, a condition may be out of range.**
- **Refer to the appropriate ESM for specific conditions required for the vehicle you are working on.**
  - Engine coolant temperature: 70 -100° C (158 -212°F)
  - Battery voltage: More than 12.9V (At idle)
  - Selector lever: P or N
  - Electric load switch: OFF (Air conditioner, headlamp, rear window defogger)
  - Steering wheel: Neutral (Straight-ahead position)
  - Vehicle speed: Stopped
  - Transmission: Warmed up
- **Accelerator Pedal Close Position Learning**
- **Erase DTCs**

Continue to the next page.

12. When the entire reprogramming process is complete, the screen in Figure 7 will display.

13. Verify the before and after part numbers are different.

14. Print a copy of this screen (Figure 7) and attach it to the repair order for warranty documentation.

15. Select **Confirm**.

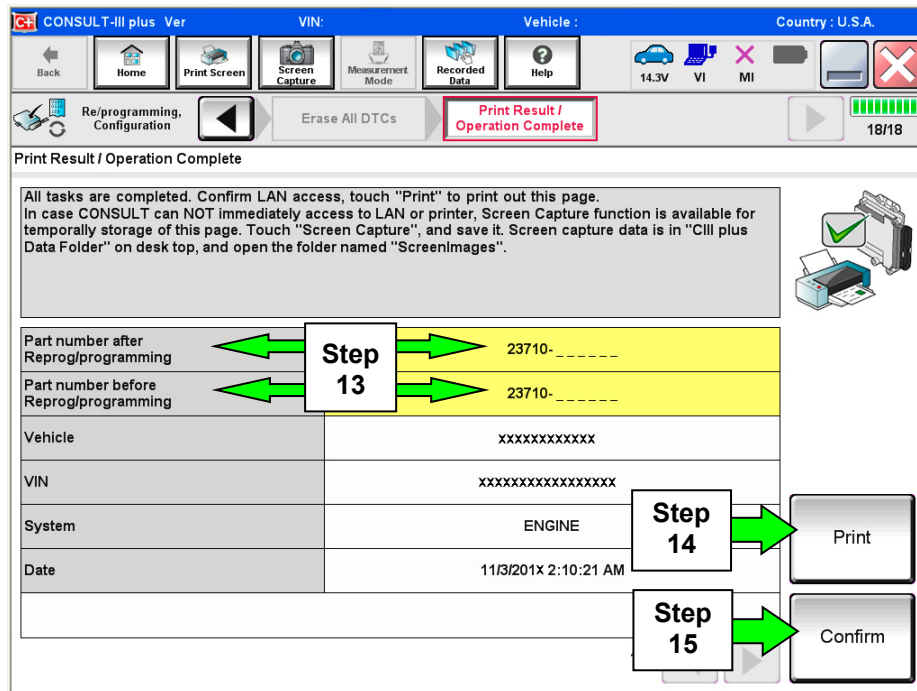


Figure 7

16. Close C-III plus.

17. Turn the ignition OFF.

18. Disconnect the plus VI from the vehicle.

## PARTS INFORMATION

DESCRIPTION	PART NUMBER	QUANTITY
PCV Valve (Black Color)	11810-6N202	1

## CLAIMS INFORMATION

### IF PCV Valve is Orange and requires replacement

Submit a Primary Part (PP) type claim using the following claims coding:

DESCRIPTION	PFP	OP CODE	SYM	DIA	FRT
RPL PCV Valve	11810-6N202	AR32AA	HD	32	(1)

(1) Reference the current Nissan Warranty Flat Rate Manual and use the indicated FRT.

### And Only if needed

On the same repair line if the ECM is reprogrammed:

DESCRIPTION	OP CODE	SYM	DIA	FRT
Reprogram ECM	DE97AA	ZE	32	(1) (2)

(1) Reference the current Nissan Warranty Flat Rate Manual and use the indicated FRT.

(2) FRT allows adequate time to access DTC codes and reprogram ECM. No other diagnostic procedures subsequently required. Do NOT claim any Diagnostic Op Codes with this claim.

## OR

### IF PCV Valve is Black and only reprogramming is needed

Submit a Primary Part (PP) type claim using the following claims coding:

DESCRIPTION	PFP	OP CODE	SYM	DIA	FRT
Reprogram ECM	(1)	DE97AA	ZE	32	(2) (3)

(1) Reference FAST and use the ECM part number (23710-\*\*\*\*\*) as the PFP.

(2) Reference the current Nissan Warranty Flat Rate Manual and use the indicated FRT.

(3) FRT allows adequate time to access DTC codes and reprogram ECM. No other diagnostic procedures subsequently required. Do NOT claim any Diagnostic Op Codes with this claim.