



Service Bulletin

File in Section: -

Bulletin No.: 18-NA-093

Date: April, 2018

TECHNICAL

Subject: Low Oil Level Indicator Illuminated

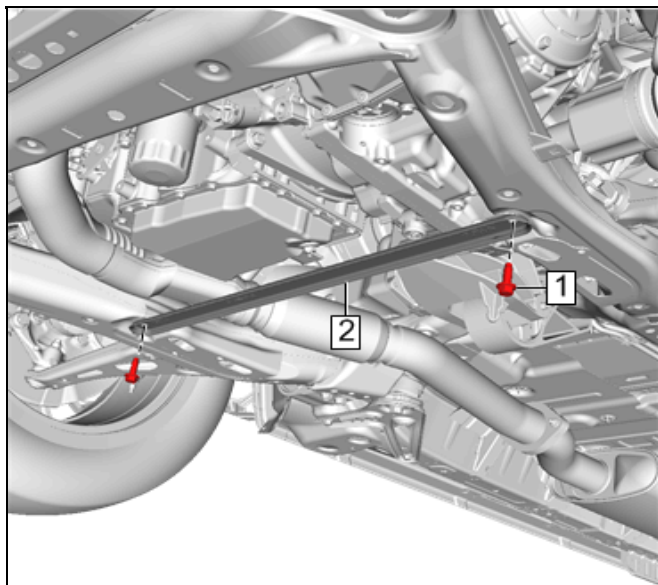
Brand:	Model:	Model Year:		VIN:		Engine:	Transmission:
		from	to	from	to		
Chevrolet Holden	Equinox	2018	2018			LTG	All

Involved Region or Country	North America and NA Export vehicles
Additional Options (RPOs)	Equipped with 2.0 4 Cylinder Engine (RPO LTG)
Condition	Some customers may comment on a low oil indicator illuminated.
Cause	This may be caused by the front cradle brace being installed incorrectly causing a small clearance condition between the brace and the oil level sensor. Under load the engine can move and contact the sensor connector causing damage to the sensor.
Correction	Replace oil level sensor and reposition the front cradle brace.

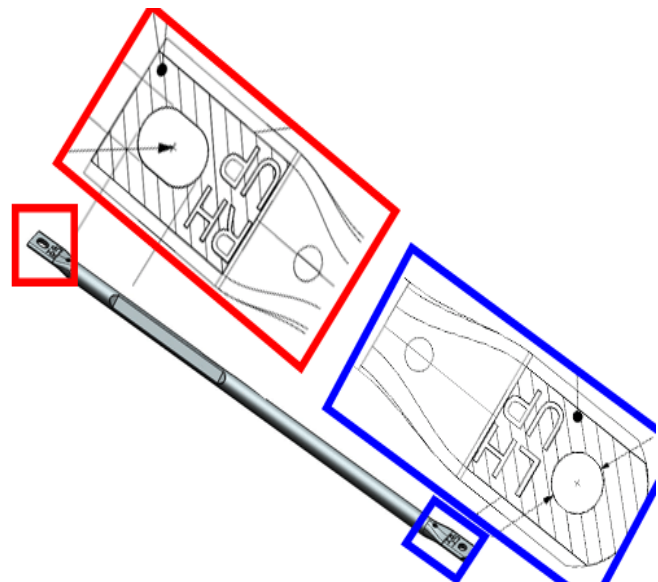
Service Procedure

If you encounter a vehicle with the above concern, complete the following:

1. Replace the damaged oil level sensor. Refer to *Engine Oil Level Indicator Switch Replacement* in SI.



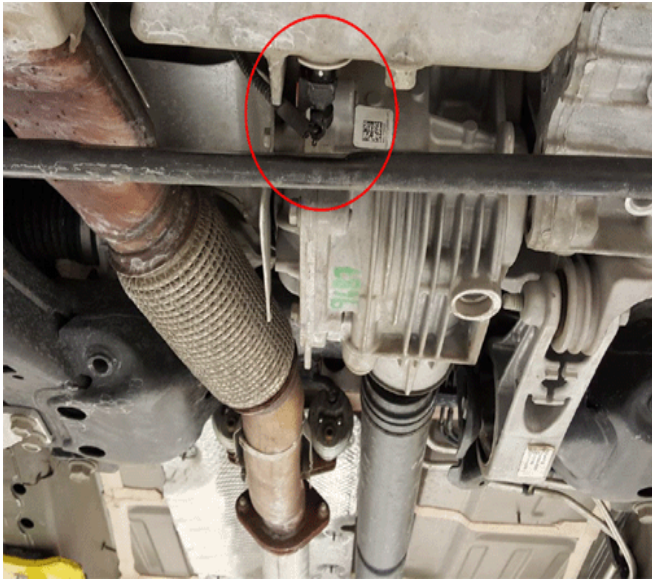
4311585



5024351

3. Position the brace so that stamped indicators on the brace are in the correct orientation like illustrated above.

2. Once the oil level sensor is replaced reposition the front cradle brace by removing and discarding the 2 bolts pictured above.



5026306

Note: Correct orientation when viewed from front of vehicle. Note position of relief channel that provides proper clearance between brace and sensor.

4. Torque the new bolts for the brace to 58 Y + 30°-45° (43 lb ft).

Parts Information

Causal Part	Description	Part Number	Qty
N/A	SWITCH ASM-ENG OIL LVL IND	12639127	1
	BOLT - HVY HX ACORN FLG HD	11588738	2

Warranty Information

For vehicles repaired under the Bumper-to-Bumper coverage (Canada Base Warranty coverage), use the following labor operation. Reference the Applicable Warranties section of Investigate Vehicle History (IVH) for coverage information.

Labor Operation	Description	Labor Time
1481028*	Replace Oil Level Sensor and Reposition the Front Cradle Brace	1.3 hr

*This is a unique Labor Operation for Bulletin use only.

Version	1
Modified	Released March 28, 2018

