



Service Bulletin

File in Section: -

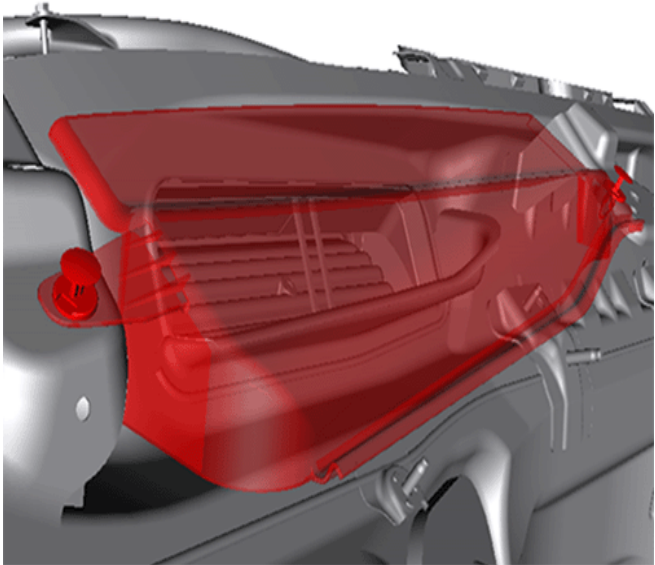
Bulletin No.: 18-NA-090

Date: March, 2018

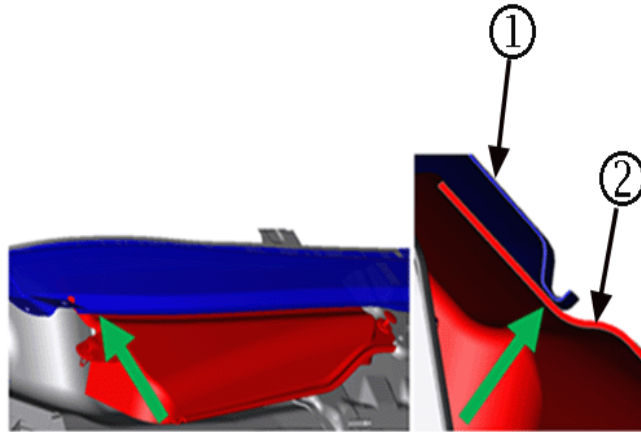
TECHNICAL

Subject: Buzz, Rattle Noise Heard from Passenger Side Dash Area

Brand:	Model:	Model Year:		VIN:		Engine:	Transmission:
		from	to	from	to		
Chevrolet	Camaro	2016	2018			All	All

Involved Region or Country	North America, China, Republic of Korea, Europe, Middle East, South America, Japan, Russia, Israel
Condition	Some customers may comment on hearing a buzz or rattle noise coming from the passenger side of the dash.
Cause	

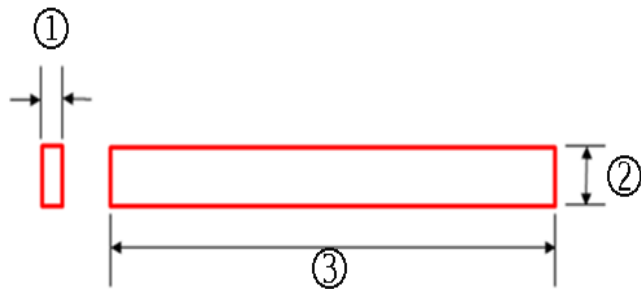
5022278



5022280

The cause of the condition may be that the underside of the cowl sheet metal (1) is contacting the underhood plenum water deflector (2).

Correction

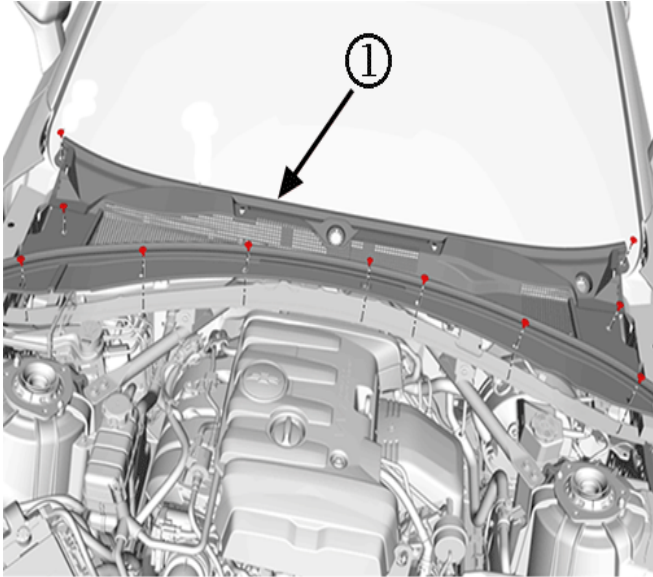


5022282

Note: The dimensions of each piece of foam tape should be approximately 5 mm (0.20 in) thick (1) x 15 mm (0.60 in) wide (2) x 142 mm (5.60 in) in length (3).

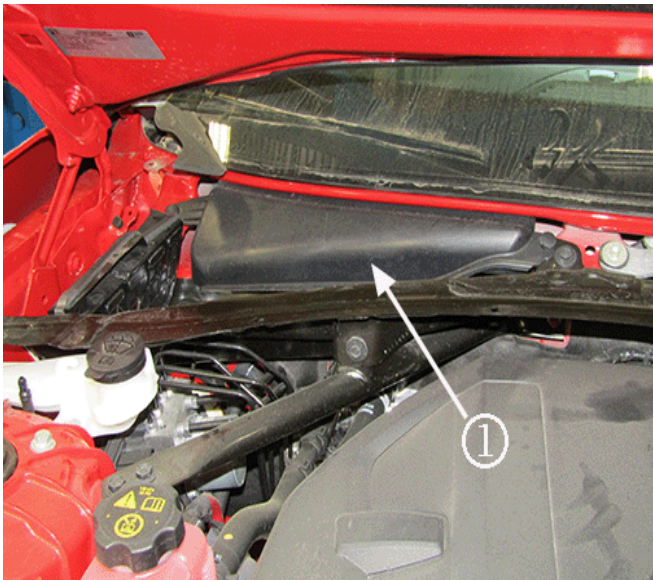
R & R the plenum water deflector and apply 2 pieces of adhesive back closed cell foam tape (obtained locally) following the Service Procedure below.

Service Procedure



5022286

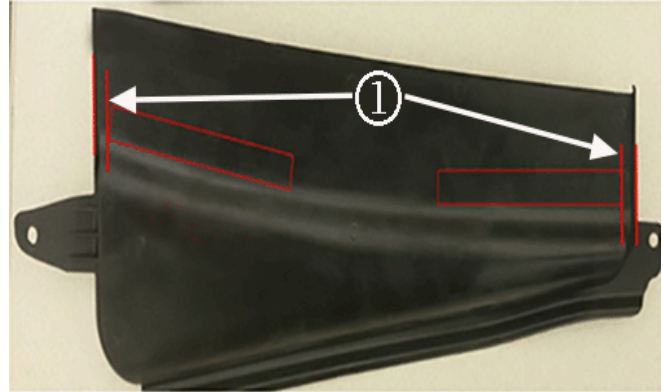
1. Remove the air inlet grille panel (1). Refer to *Air Inlet Grille Panel Replacement* in SI.



5022289

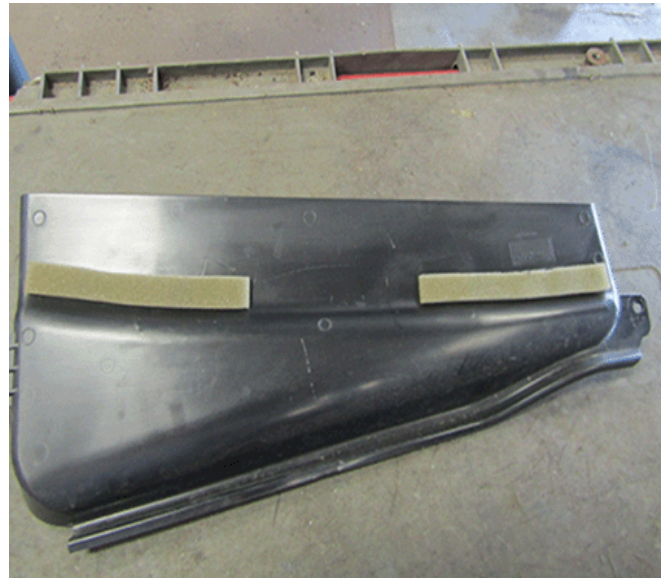
2. Remove the plenum water deflector (1). Refer to *Plenum Water Deflector Replacement* in SI.

3. Apply two pieces of the adhesive back closed cell foam tape to the deflector as shown below:
 - 3.1. Cut two pieces of adhesive back foam tape, approximately 142 mm (5.60 in) in length.



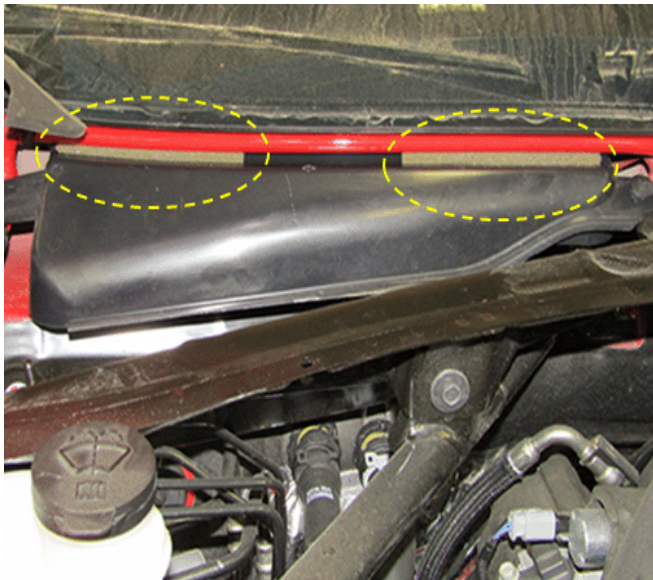
5022290

- 3.2. Mark a location approximately 10 mm (0.4 in) inboard (1) from EACH end of the deflector.



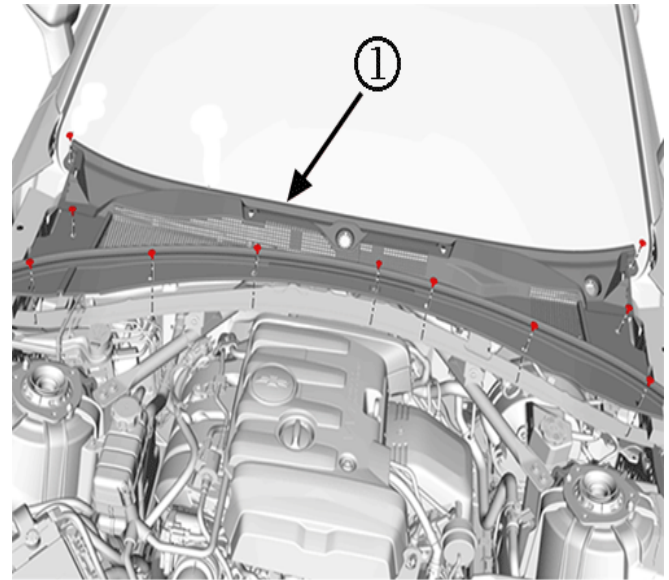
5022293

- 3.3. At the location marks, apply one piece of tape to each side at the edge where the part level changes. Ensure to follow the curvature of the part.



5022294

4. Reinstall the plenum water deflector. Refer to *Plenum Water Deflector Replacement* in SI.



5022286

5. Reinstall the air inlet grille panel (1). Refer to *Air Inlet Grille Panel Replacement* in SI.

Parts Information

Obtain the adhesive back closed cell foam tape locally.

Warranty Information

For vehicles repaired under the Bumper-to-Bumper coverage (Canada Base Warranty coverage), use the following labor operation. Reference the Applicable Warranties section of Investigate Vehicle History (IVH) for coverage information.

Labor Operation	Description	Labor Time
2080838*	Add Foam Tape to Plenum Water Deflector	0.5 hr
*This is a unique Labor Operation for Bulletin use only.		

Version	1
Modified	Released March 22, 2018

