

Subject: Engineering Information — Malfunction Indicator Lamp Illuminated with DTCs P2101 Throttle Actuator Position Performance and/or P2119 Throttle Closed Position Performance

Attention: Proceed with this EI ONLY if the customer has commented about this concern AND the PIE number is listed in the Global Warranty Management / Investigate History link (GWM/IVH). If the customer has not commented about this condition or the EI does not show in GWM/IVH, disregard the PI and proceed with diagnostics found in published service information. THIS IS NOT A RECALL — refer to Service Bulletin 04-00-89-053E for more details on the use of Engineering Information bulletins.

This PI has been revised to update the correction. Please discard PIE0444.

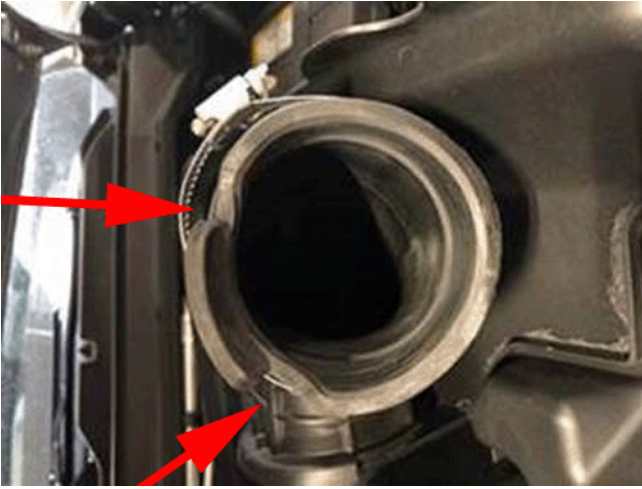
Brand:	Model:	Model Year:		VIN:		Engine:	Transmission:
		from	to	from	to		
Chevrolet	Colorado	2017	2018			LGZ	All
GMC	Canyon	2017	2018				

Involved Region or Country	North America
Additional Options (RPO)	Equipped with 3.6L Gas Engine (RPO LGZ)
Condition	<p>Important: If the customer did not bring their vehicle in for this concern, DO NOT proceed with this EI.</p> <p>Some customers may comment on a malfunction indicator lamp illuminated and/or vehicle may have stalled and not able to restart.</p> <p>During diagnosis a technician may find DTCs P2101 and/or P2119 active or stored in history.</p>
Cause	GM Engineering is attempting to determine the root cause of the above condition. Engineering has a need to gather information on vehicles PRIOR to repair that may exhibit this condition. As a result, this information will be used to "root cause" the customer's concern and develop/validate a field fix.

Correction

If you encounter a vehicle with the above concern, complete the following:

1. Ensure that the inlet air duct to throttle body is not out of place and installed correctly.



2. Inspect for any deformation of the air inlet as shown above. If air inlet is deformed or damaged in anyway way it will be necessary to replac and retest. Take care when installing new air inlet to not damage the sealing surface
3. Prior to disconnecting throttle body connector ensure that it was properly seated. It will also be necessary to then Inspect the throttle body connector to ensure that there are no terminal issues and the connector is free from any contamination.
4. Using your hand, ensure that the throttle body blade is moving freely.
5. Contact the engineer listed below with findings.

Contact Information

Engineer Name	Phone Number
Shannon Shaw	(248) 724-8147

Please include the following information if leaving a message:

- Technician name
- Dealer name and phone number
- Complete VIN and repair order (R.O) number

On the repair order, document the date and time the call was placed (even if the engineer was not reached).

If engineering is unable to return the call within one hour, proceed with diagnosis and repair based on information found in SI.

Warranty Information

If engineer was contacted or required information was provided, use:

Labor Operation	Description	Labor Time
4086008*	Engineering Information — Malfunction Indicator Lamp Illuminated with DTCs P2101 Throttle Actuator Position Performance and/or P2119 Throttle Closed Position Performance	0.4 hr

* This is a unique labor operation for bulletin use only. It will not be published in the Labor Time Guide.

Version	2
Modified	Released January 10, 2018 March 02, 2018 — Added Pictures and updated Correction.