



Service Bulletin

File in Section: 08 - Body and Accessories

Bulletin No.: 09-08-64-014C

Date: March, 2018

INFORMATION

Subject: Information on Side Window Glass Not Clearing Molding When Indexing Down During Door Opening

Models: 2010-2018 Chevrolet Camaro

Attention: This Bulletin also applies to any of the above models that may be Export from North America vehicles.

This Bulletin has been revised to update the Model Years. Please discard Corporate Bulletin Number 09-08-64-014B.

This bulletin is being issued to inform dealer personnel about concerns regarding the side window glass not clearing the molding when the window indexes down as the door is opened. Opening the door too quickly to allow the window glass to fully index down may be the cause of this concern.

Power Window Indexing Feature

The window indexing function automatically lowers the window a small amount when the door is opened. When the door is closed, the window will raise fully. The Camaro utilizes the door latch as the indicator to index the window downward. Because of this, the customer needs to take their time when opening the door.

Explain and demonstrate the operation of the window indexing feature to the customer, including reviewing the Window Indexing section under Power Windows in the Owner Manual. The window indexing is dependent on the door open position. The door must be opened from 1 mm (0.039 in) to 7.5 mm (0.295 in) before the window will index down. The following will illustrate the window up and indexed position, as well as the required door position.

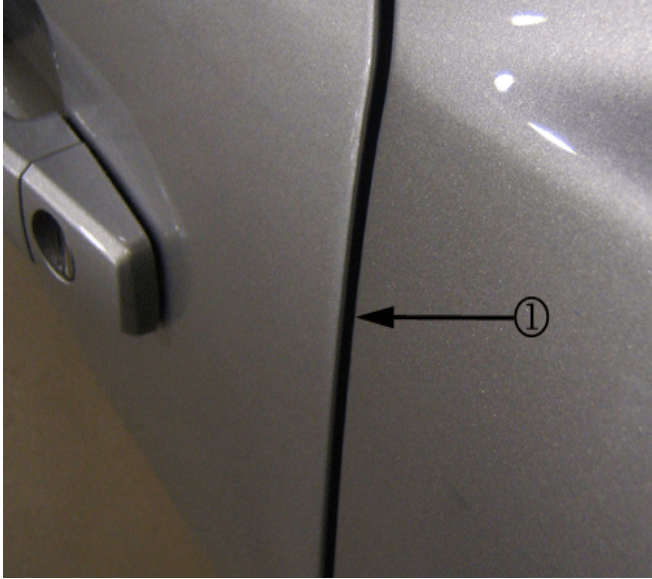
Important: If you find that the window is indexing down but the window is still making contact with the weatherstrip while opening the door, please follow Steps 1-6 of the Front Side Door Window Adjustment procedure in SI.

Window in "Up" Position (1) (Door Window Fully Seated in Weatherstrip)



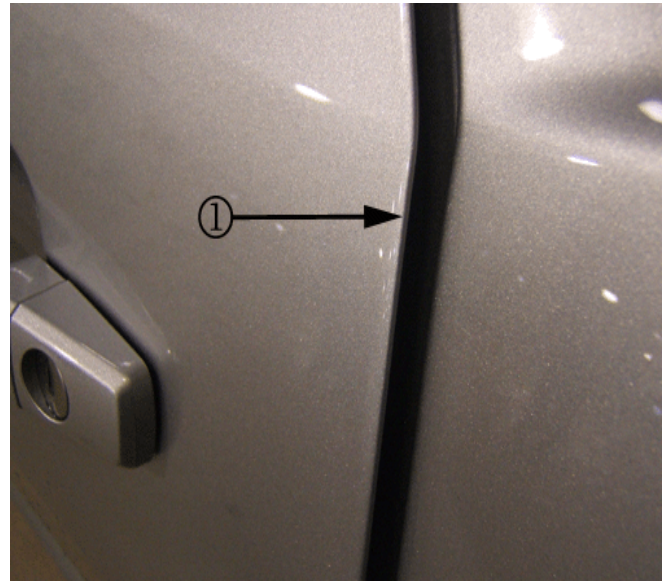
2261663

Door in "Closed" Position (1)



2263892

Door in "Open" Position From 1 mm (0.039 in) to 7.5 mm (0.295 in) (1)



2263896

Window in "Indexed" Position (1) (When Door Latch is Opened)



2261664

For additional information, please refer to the latest version of Corporate Bulletin Number 09-00-89-014 – Camaro New Model Features and Service Guide. You may also wish to give the customer a copy of this bulletin.

