



# Ferrari North America

## Technical Information

Date: April 2018  
Bulletin #: Corse Clienti 121  
Campaign #:  
Supersedes:  
Section:

**Subject: RCS Diagnostic Software Update**

A new release of diagnostic software for the RCS – Race Connectivity System is available

The new update includes the following;

- Addendum to the technical documentation regarding ECU diagrams and pinout to support diagnosis. This info can be accessed with the HELP function for the ECUs listed on the first page of the diagnostic application (Fig.1)
- The new communication protocol keeps the RCS synchronized with the Ferrari Server

Windows XP/Windows 7 or Windows 10 are recommended to run the RCS application

**IMPORTANT: The functionality of the 1.3.0.1 release can only be accessed if the software certificate is loaded on the USB WIBU pendrive (hardware key)**

**The software certificate can be requested by following the procedure in the Corse Clienti 115 bulletin from January 2018**

**The certificate will be installed remotely on your USB WIBU pendrive by DSA personnel**

**BEFORE INSTALLING THE 1.3.0.1 RELEASE SOFTWARE, PLEASE CONFIRM THE SOFTWARE CERTIFICATE HAS ALREADY BEEN INSTALLED**

### Update instructions:

1. Navigate to this site: <https://www.dsasystems.it/owncloud/s/EQMDh5zyhITAuU>
2. Enter the password **Challenge2017** when prompted
3. Download the file “RCS -1.3.0.1-20180319-1135\_WiBu.exe” to your computer (Fig.2)
4. Unzip the file and double click on the .exe file “RCS -1.3.0.1-20180319-1135\_WiBu.exe” located in the DEIS.Challenge folder (Fig.3)
5. Follow the instructions on the screen for installation.

Thank you for your co-operation



# Ferrari North America

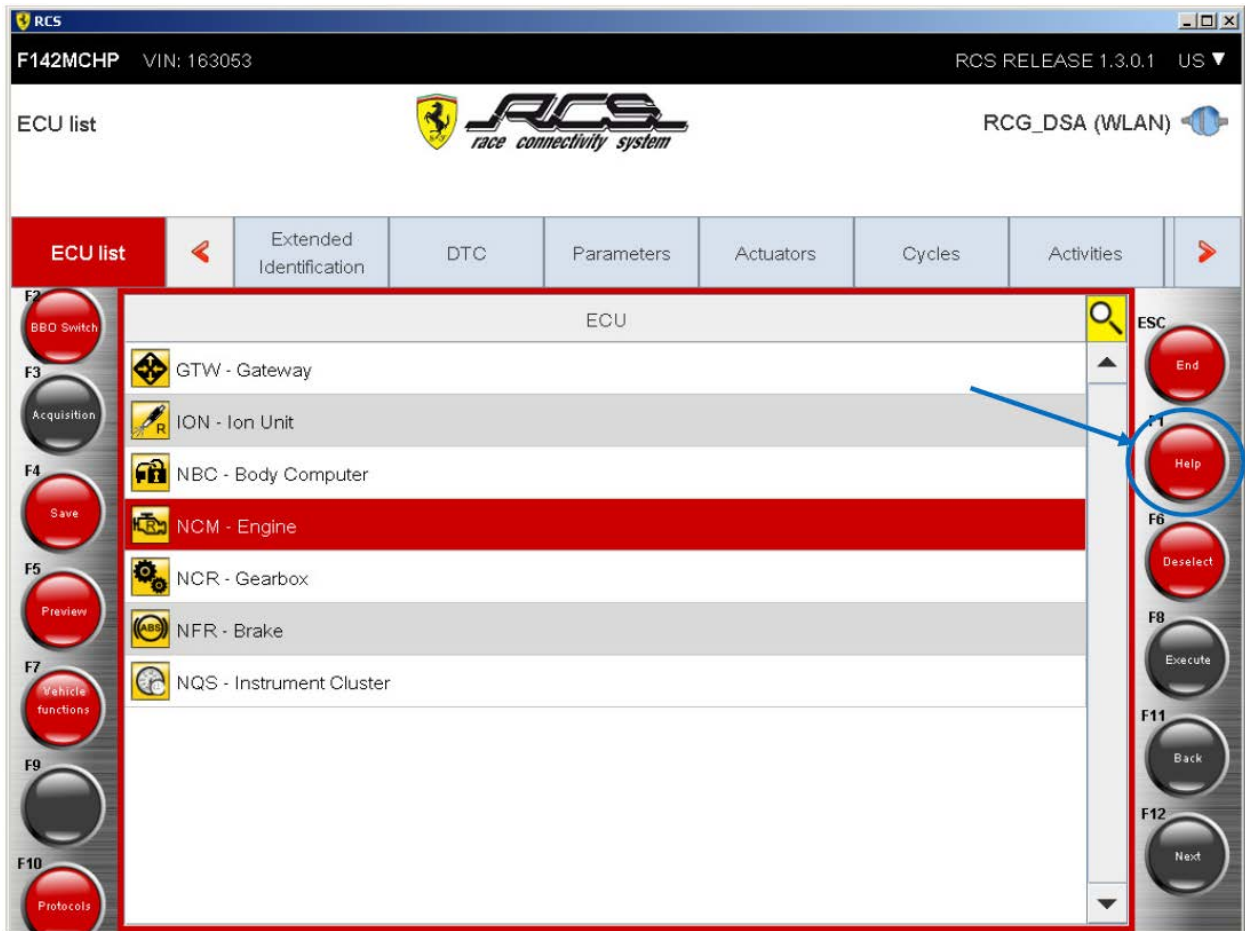


Fig.1

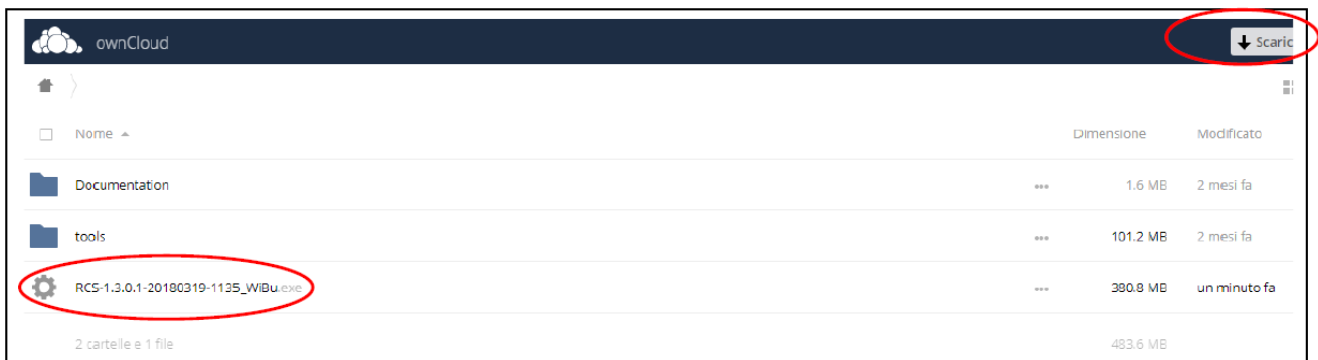


Fig. 2



# Ferrari North America

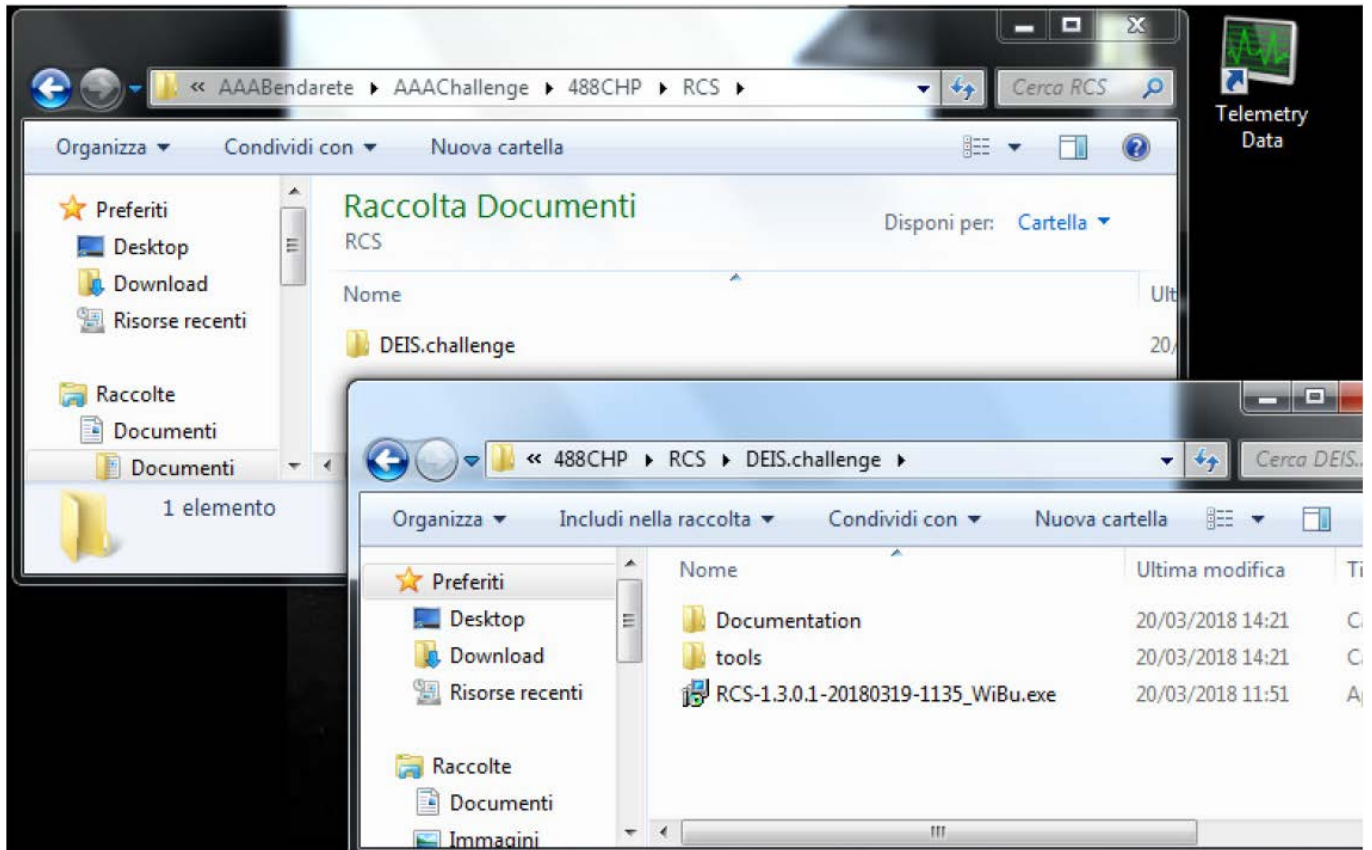


Fig.3