

Classification:
EM16-006a

Reference:
ITB17-004a

Date:
March 28, 2018

2016-2017 Q50 AND 2017 Q60; ACCESSORY DRIVE BELT NOISY OR HAS COME OFF

This bulletin has been amended to add 2017 Q50 to the Title, Applied Vehicles, and Applied VIN and Date. No other changes have been made. Please discard previous version of this bulletin.

APPLIED VEHICLES: 2016-2017 Q50 (V37)
2017 Q60 (V37)

APPLIED VIN AND DATE: 2016 Q50 (V37) All
2017 Q50 (V37)
Built before:

RWD	{	JN1EV7AP(*)HM 731871 / September 7, 2016
		JN1FV7AP(*)HM 850227 / September 7, 2016
AWD	{	JN1EV7AR(*)HM 832718 / September 7, 2016
		JN1FV7AR(*)HM 870451 / September 7, 2016

2017 Q60 (V37)
Built before:

RWD	{	JN1EV7EK(*)HM 360095 / May 27, 2016
		JN1FV7EK(*)HM 610102 / May 27, 2016
AWD	{	JN1EV7EL(*)HM 550025 / May 27, 2016
		JN1FV7EL(*)HM 700062 / May 27, 2016

APPLIED ENGINE: VR30DDTT (V6 Twin Turbo Engine)
NOTE: Does not apply to Hybrid models

IF YOU CONFIRM

The accessory drive belt is noisy.

or

The accessory drive belt has come off of the idler pulley.

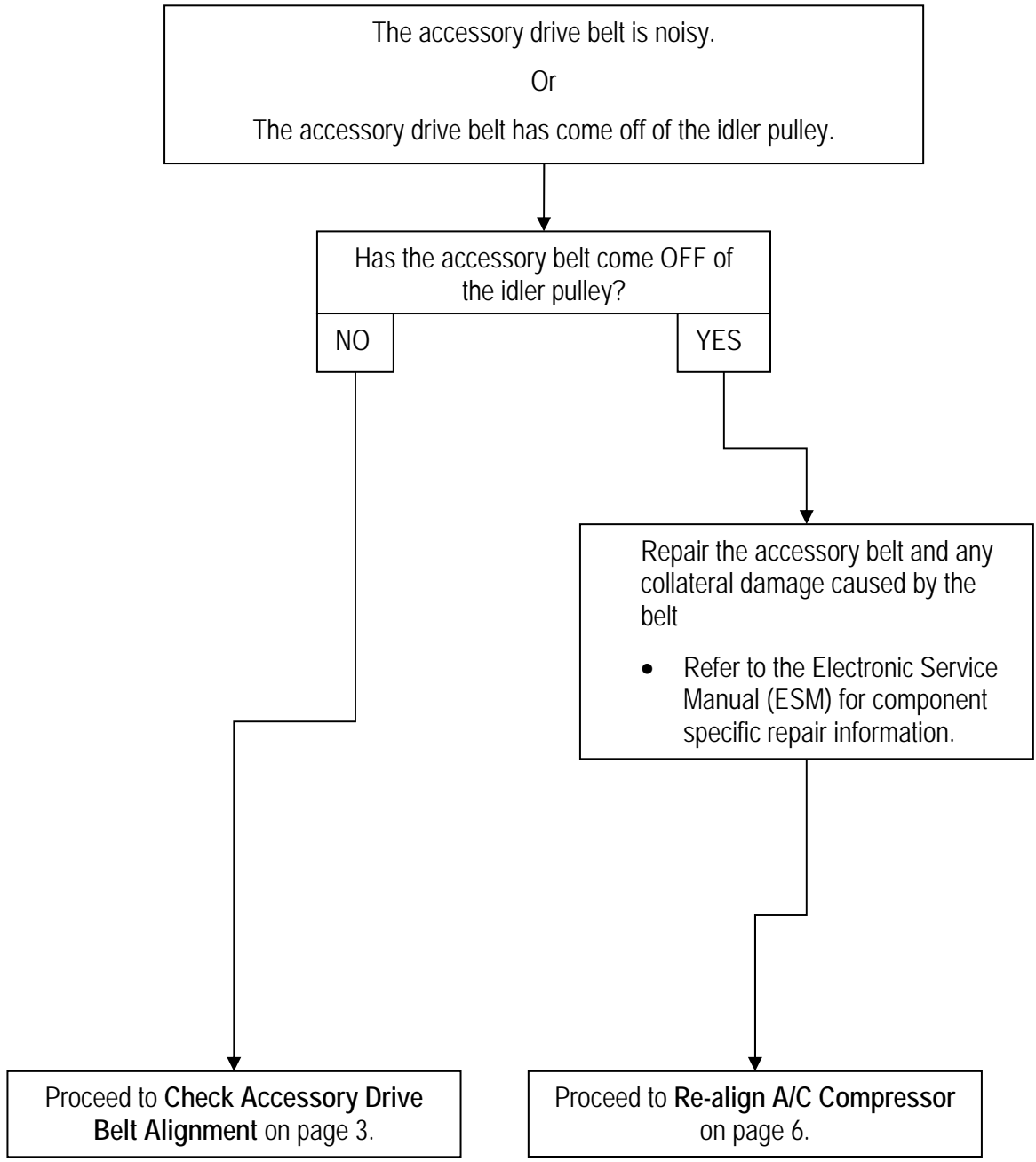
ACTION

- If the accessory drive belt is currently only noisy, check it's alignment with the procedure starting on page 3.
- If the accessory drive belt has come off of the idler pulley, first repair the accessory drive belt and any collateral damage caused by the belt, and then Proceed to Re-align A/C Compressor on page 6.

IMPORTANT: The purpose of **ACTION** (above) is to give you a quick idea of the work you will be performing. You **MUST** closely follow the entire **SERVICE PROCEDURE** as it contains information that is essential to successfully completing this repair.

Infiniti Bulletins are intended for use by qualified technicians, not 'do-it-yourselfers'. Qualified technicians are properly trained individuals who have the equipment, tools, safety instruction, and know-how to do a job properly and safely. **NOTE:** If you believe that a described condition may apply to a particular vehicle, **DO NOT** assume that it does. See your Infiniti retailer to determine if this applies to your vehicle.

Flow Chart



SERVICE PROCEDURE

Check Accessory Drive Belt Alignment

1. Access the idler pulley by hand.

NOTE: The idler pulley can be reached from the driver's side of the engine compartment between the radiator and the front of the engine as shown in Figure 1 and Figure 2.

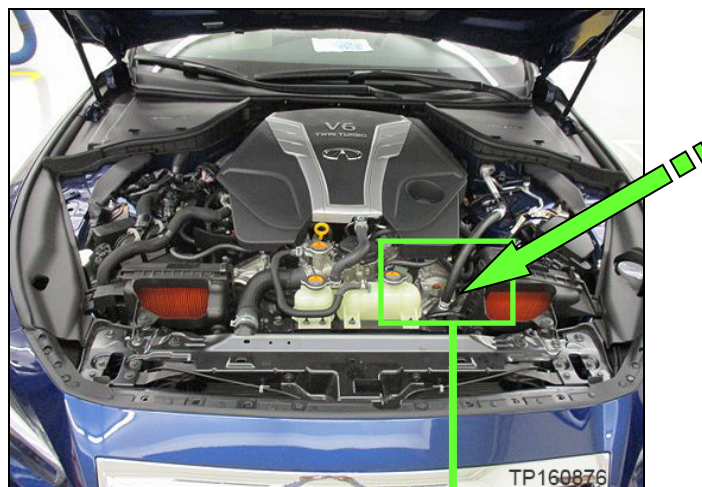


Figure 1

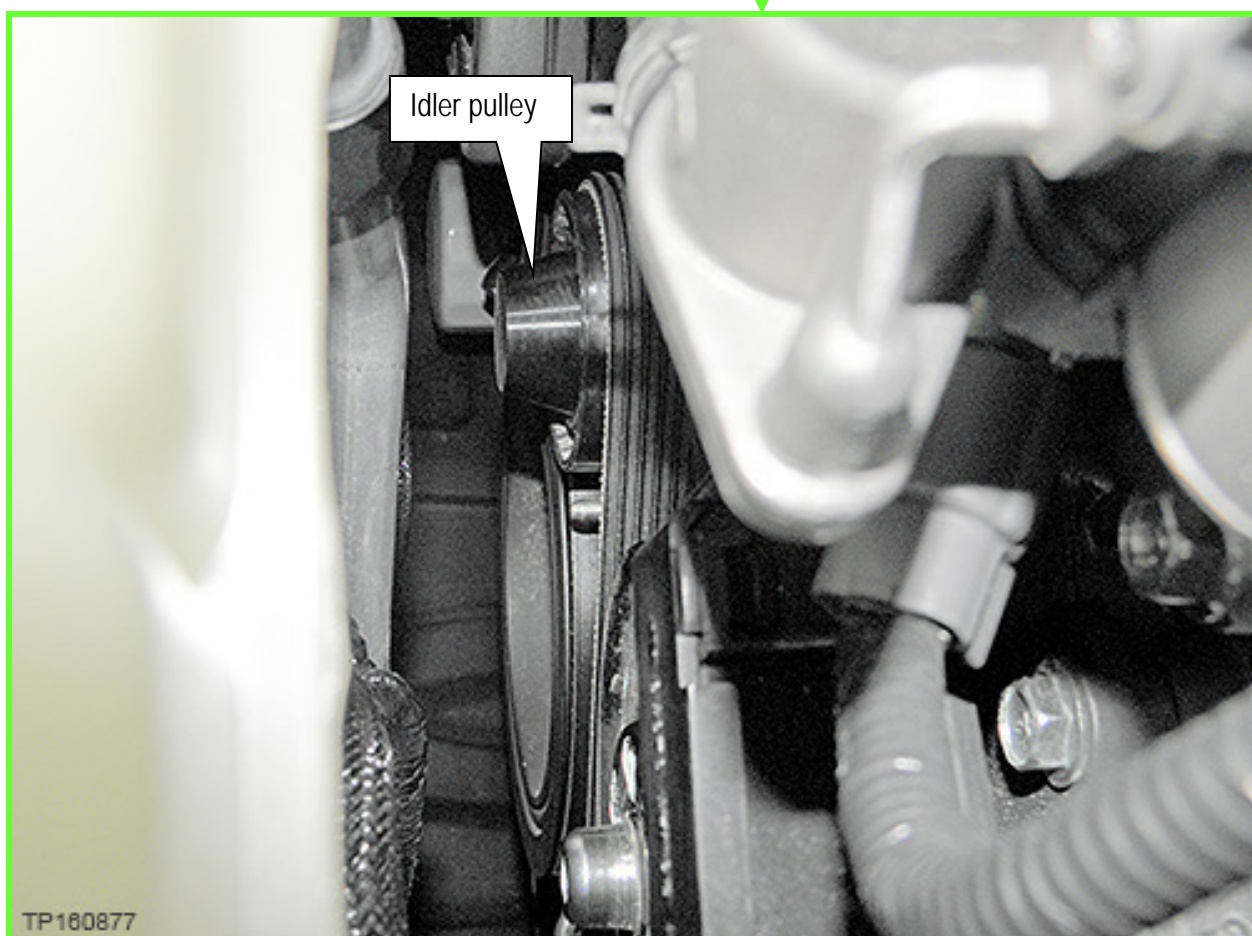


Figure 2

2. Measure the gap from the front edge of the belt to the front edge of the idler pulley shown in Figure 3 as follows:

a. Cut out a 1 inch square piece of paper.

NOTE: sticky note can be used.

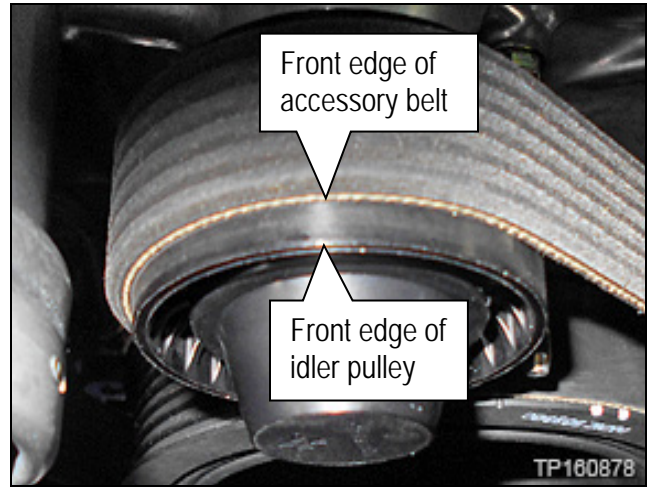


Figure 3

b. Align the paper to the front edge of belt (Figure 3 and Figure 4).

c. While holding the paper up against the edge of the belt, press the paper into the edge of the idler pulley to mark the paper.

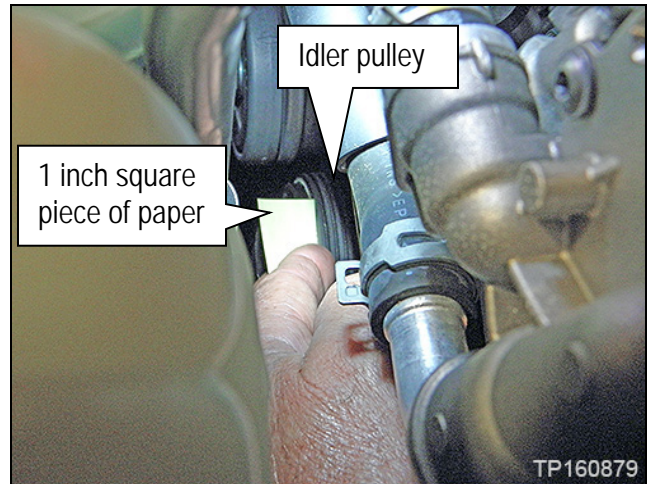


Figure 4

d. Remove the paper and measure the distance from the belt to the mark that was just imprinted on the paper.

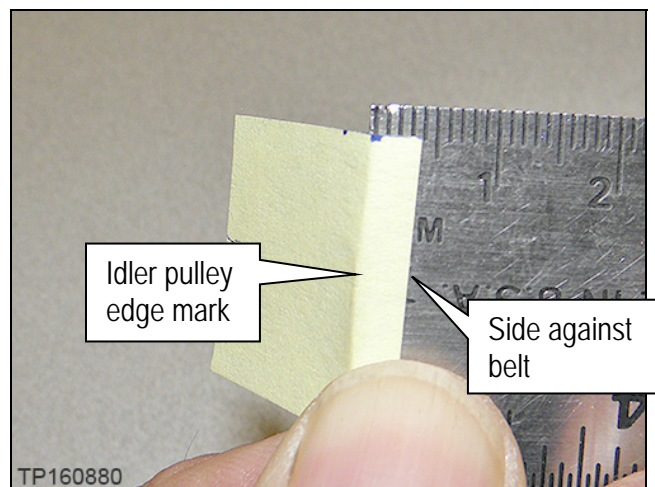


Figure 5

3. Is the distance of the belt 3.5 mm or more from the front edge of the pulley?

YES: No adjustment required at this time.

- Refer to the ESM, section **EM – Engine Mechanical** for further diagnostic information.

NO: Proceed to **Re-align A/C Compressor**.

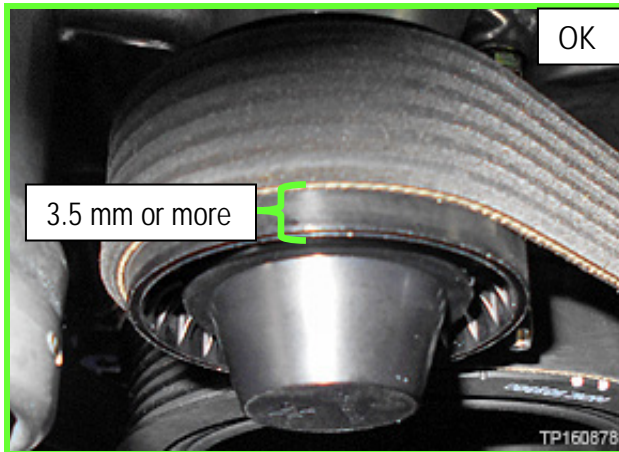


Figure 6

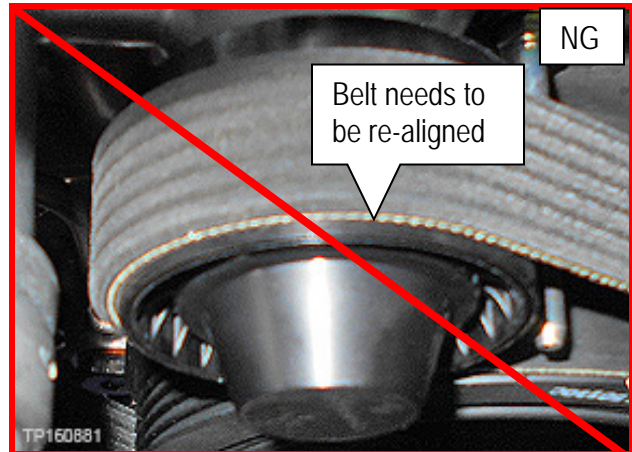


Figure 7

Re-align A/C Compressor

1. Remove Air Duct (inlet) shown in Figure 8.
2. Remove Air cleaner body (bank 2).
3. Remove Air cleaner cover (bank 2).
4. Remove Air duct (bank 2).

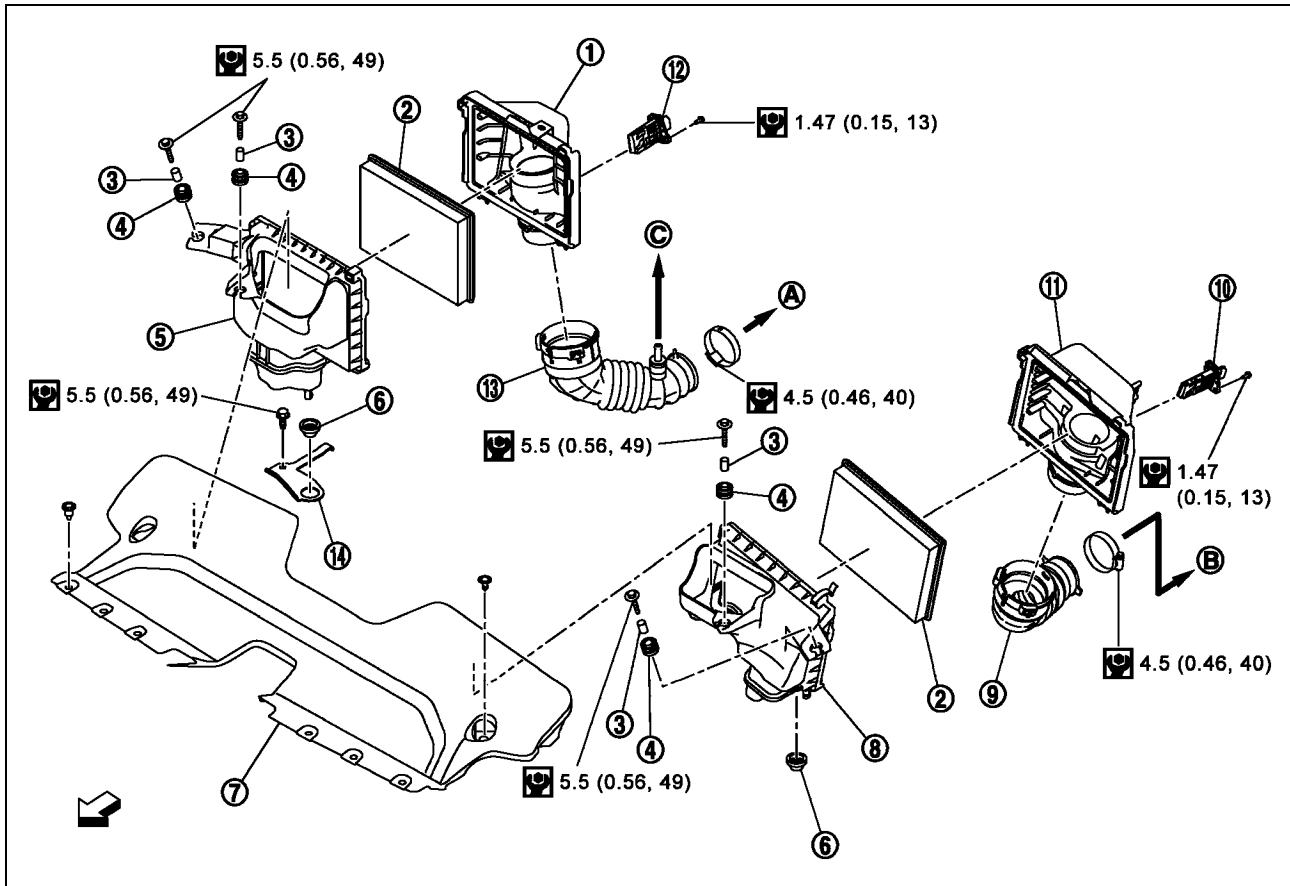


Figure 8

- | | | |
|---------------------------------|------------------------------|--|
| ① Air cleaner cover (bank 1) | ② Air cleaner filter | ③ Spacer |
| ④ Grommet | ⑤ Air cleaner body (bank 1) | ⑥ Grommet |
| ⑦ Air duct (inlet) | ⑧ Air cleaner body (bank 2) | ⑨ Air duct (bank 2) |
| ⑩ Mass air flow sensor (bank 2) | ⑪ Air cleaner cover (bank 2) | ⑫ Mass air flow sensor (with intake air temperature sensor) (bank 1) |
| ⑬ Air duct (bank 1) | ⑭ Bracket | |
| Ⓐ To turbocharger (bank 1) | Ⓑ To turbocharger (bank 2) | Ⓒ To rocker cover (bank 1) |
| ⇐ : Engine front | | |
| Ⓜ : N-m (kg-m, in-lb) | | |

5. Remove the accessory drive belt.
 - Refer to the ESM, section **EM – Engine Mechanical** for removal information.
6. Discharge the A/C refrigerant.
 - Refer to the ESM, section **HA – Heating & Air Conditioning System** for information on discharging the A/C system.

7. Remove the nut holding the high pressure hose to the A/C compressor and then disconnect the high pressure hose.

NOTE: Do not remove the low pressure hose.

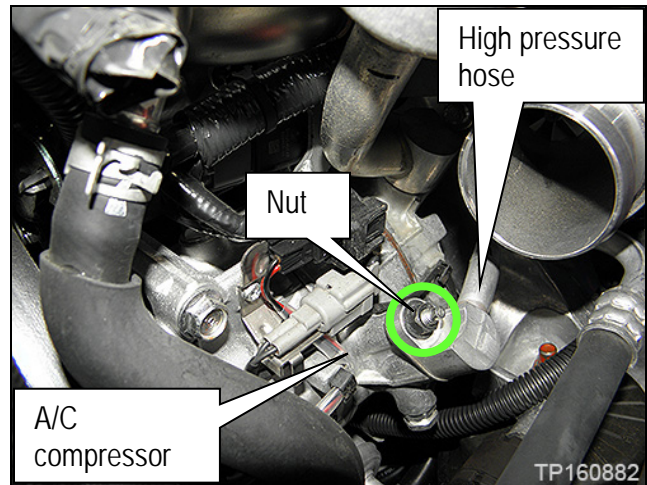


Figure 9

8. Loosen the front two (2) A/C compressor mounting bolts shown in Figure 10.
 - Do not remove the A/C compressor mounting bolts when loosening.
9. Loosen the single rear A/C compressor mounting bolt shown in Figure 10.

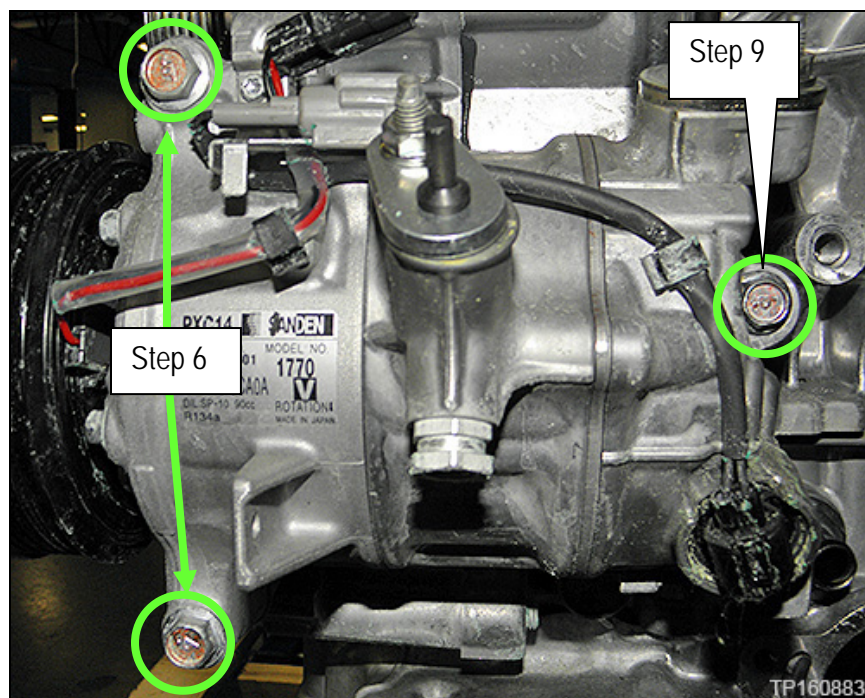


Figure 10

10. Move the A/C compressor up and down to free it from the engine assembly.
11. Push the A/C compressor toward the rear of the vehicle.
12. While holding the A/C compressor toward the rear of the vehicle, tighten the A/C compressor mounting bolts in the order shown in Figure 11 to 5 N•m, (0.51 kg-m, 44 in-lb).
NOTE: Take care not to move the A/C compressor until the final torquing of the bolts in the next step.
13. Torque the A/C compressor mounting bolts to 30.9 N•m, (3.2 kg-m, 23 ft-lb) in the order shown in Figure 11.

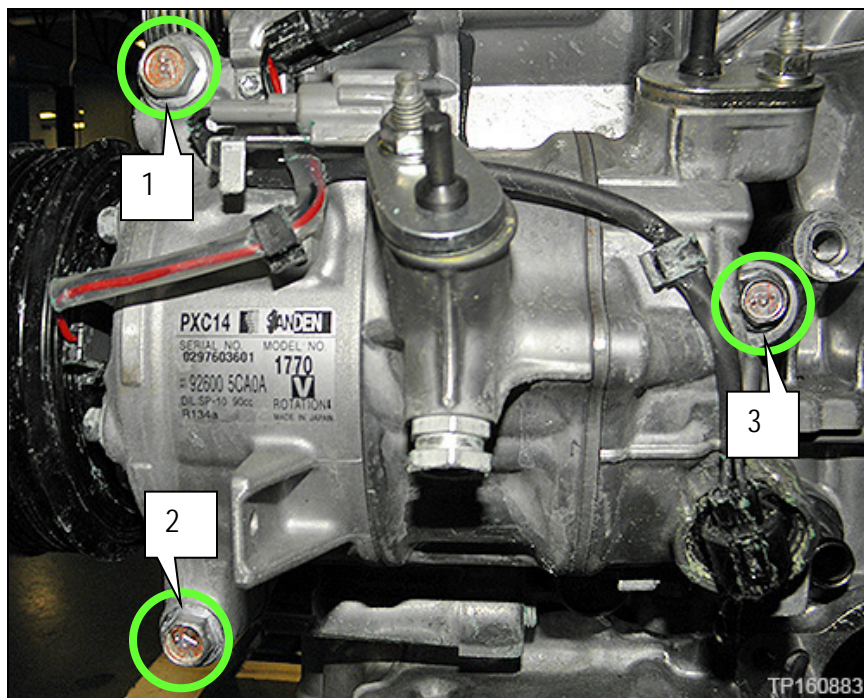


Figure 11

14. Re-assemble the vehicle in the reverse order of disassembly.
15. Recharge A/C refrigerant.
 - Refer to the ESM, section HA – Heating & Air Conditioning System for information on recharging the A/C system.

PARTS INFORMATION

DESCRIPTION	PART NUMBER	QUANTITY
Accessory Drive Belt	11720-5CA0A	1, If Needed

CLAIMS INFORMATION

DESCRIPTION	PFP	OP CODE	SYM	DIA	FRT
Align A/C compressor (Includes A/C Evacuate and Recharge)	(1)	TX48AA	ZL	32	1.8

- (1) Refer to the electronic parts catalog (FAST or equivalent) and use the appropriate A/C Compressor part number (92600-XXXXX) as the primary failed part.