

Subject: MISSING PIDs IN DATALOGGER	Service Alert No.: SA-007/18
	Last Issued: 02/14/2018

APPLICABLE MODEL(S)/VINS

2018 CX-5 vehicles with cylinder deactivation

DESCRIPTION

If you find that PIDs are missing from Datalogger, use the temporary Datalogger and Selftest usage method below, until a permanent solution has been implemented.

To use Datalogger and Snapshot for PCM, follow the procedure below:

CAUTION:

- Use this session file for PCM Datalogger and Selftest only. For all other functions start a new session.
- Use this procedure for 2018 CX-5 vehicles (with cylinder deactivation type PCM) only.
- Do not use this procedure for any other Mazda or non-Mazda vehicles.

NOTE:

During use of this procedure, the contents displayed in the "Vehicle Specification" of M-MDS may be different from the actual vehicle. This may occur because this procedure is a temporary solution and does not affect failure diagnosis or parts replacement.

1. Click on the link below to download the "**IDS_Session_CX-5_2.5L.zip**" folder from Mazda.

https://s3.amazonaws.com/tsd.mazdausa.com/IDS/IDS_Session_CX-5_2.5L.zip

2. Select "**Save as**".

3. Click on "**Desktop**", then click "**Save**".



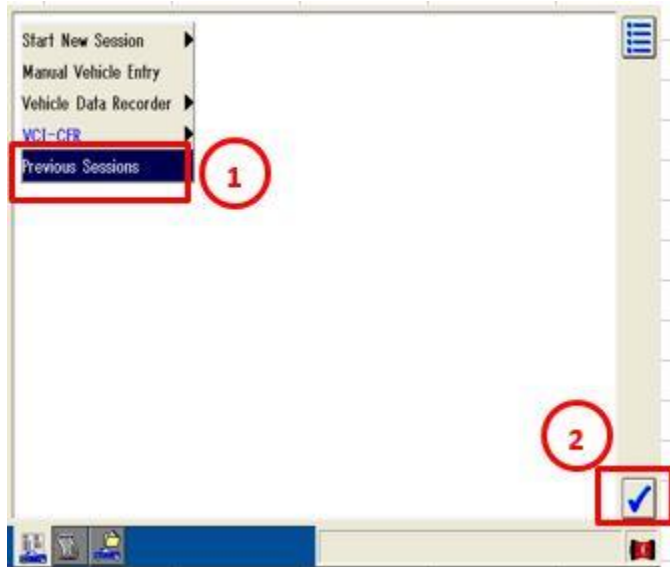
NOTE: The zip folder (containing the following five (5) files) should now be saved on your desktop.

Name	Type
#3#####~ANY_~CX-5_16~2.5L~MCAN~1.cfg	CFG File
#3#####~ANY_~CX-5_16~2.5L~MCAN~1.fbk_xml	FBK_XML File
#3#####~ANY_~CX-5_16~2.5L~MCAN~1.trs	TRS File
#3#####~ANY_~CX-5_16~2.5L~MCAN~1.val	VAL File
#3#####~ANY_~CX-5_16~2.5L~MCAN~1.xml	XML File

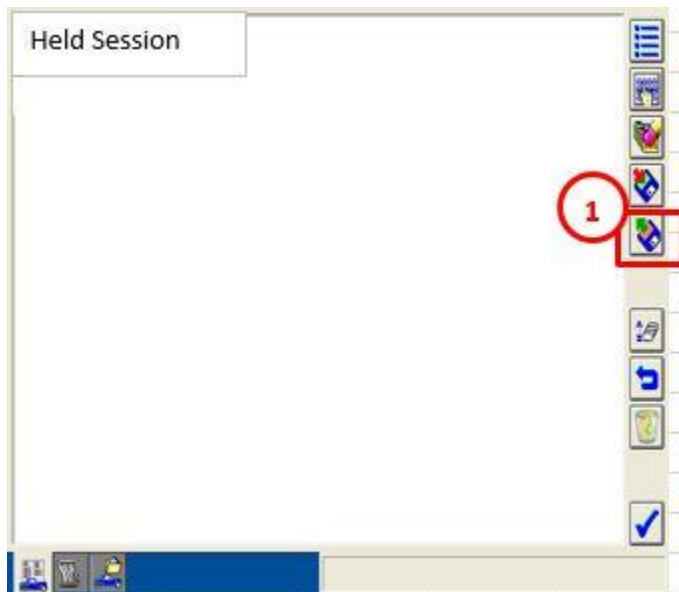
Begin the temporary Datalogger and Selftest usage procedure:

1. Select Previous Sessions.

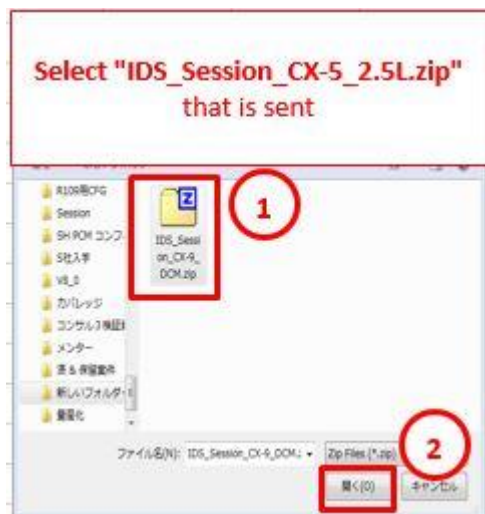
CONSUMER NOTICE: The information and instructions in this bulletin are intended for use by skilled technicians. Mazda technicians utilize the proper tools/equipment and take training to correctly and safely maintain Mazda vehicles. These instructions should not be performed by "do-it-yourselfers." Customers should not assume this bulletin applies to their vehicle or that their vehicle will develop the described concern. To determine if the information applies, customers should contact their nearest authorized Mazda dealership. Mazda North American Operations reserves the right to alter the specifications and contents of this bulletin without obligation or advance notice. All rights reserved. No part of this bulletin may be reproduced in any form or by any means, electronic or mechanical---including photocopying and recording and the use of any kind of information storage and retrieval system ---without permission in writing.



2. Select Session (sent by Mazda).



3. Select Session File.

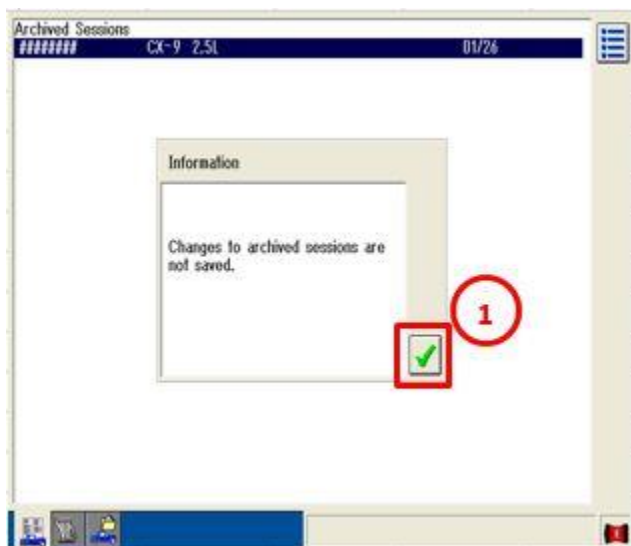


4. Select Check.

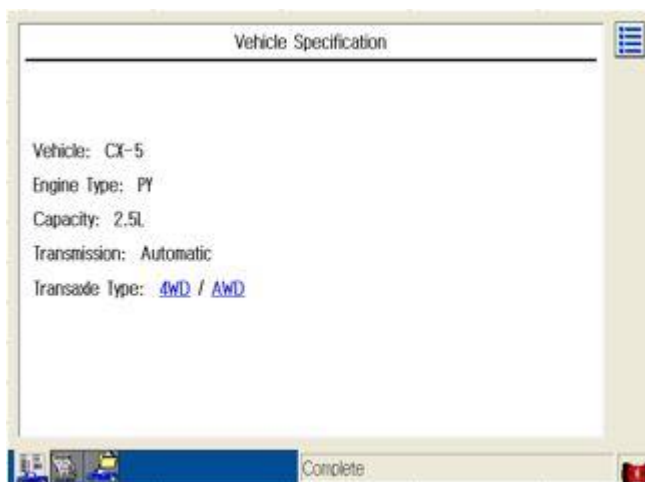


5. Select Check.

CONSUMER NOTICE: The information and instructions in this bulletin are intended for use by skilled technicians. Mazda technicians utilize the proper tools/equipment and take training to correctly and safely maintain Mazda vehicles. These instructions should not be performed by "do-it-yourselfers." Customers should not assume this bulletin applies to their vehicle or that their vehicle will develop the described concern. To determine if the information applies, customers should contact their nearest authorized Mazda dealership. Mazda North American Operations reserves the right to alter the specifications and contents of this bulletin without obligation or advance notice. All rights reserved. No part of this bulletin may be reproduced in any form or by any means, electronic or mechanical---including photocopying and recording and the use of any kind of information storage and retrieval system ---without permission in writing.



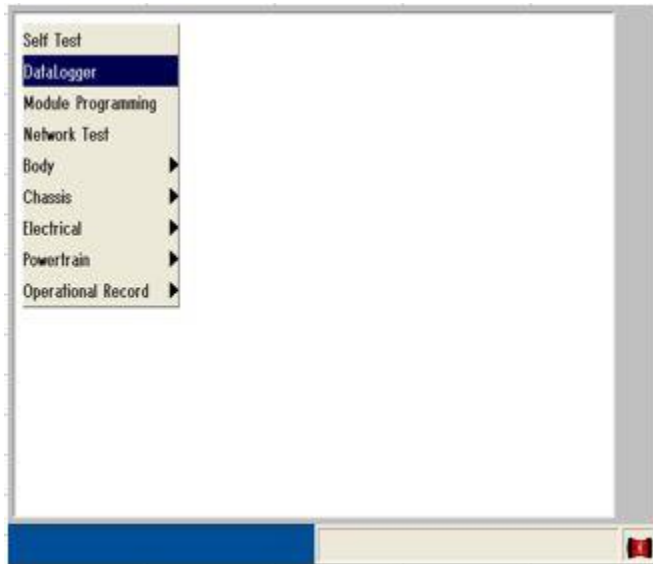
6. Complete Vehicle Identification.



End of Datalogger and Selftest usage procedure.

NOTE: Images below are for reference only.

CONSUMER NOTICE: The information and instructions in this bulletin are intended for use by skilled technicians. Mazda technicians utilize the proper tools/equipment and take training to correctly and safely maintain Mazda vehicles. These instructions should not be performed by "do-it-yourselfers." Customers should not assume this bulletin applies to their vehicle or that their vehicle will develop the described concern. To determine if the information applies, customers should contact their nearest authorized Mazda dealership. Mazda North American Operations reserves the right to alter the specifications and contents of this bulletin without obligation or advance notice. All rights reserved. No part of this bulletin may be reproduced in any form or by any means, electronic or mechanical---including photocopying and recording and the use of any kind of information storage and retrieval system ---without permission in writing.



CONSUMER NOTICE: The information and instructions in this bulletin are intended for use by skilled technicians. Mazda technicians utilize the proper tools/equipment and take training to correctly and safely maintain Mazda vehicles. These instructions should not be performed by "do-it-yourselfers." Customers should not assume this bulletin applies to their vehicle or that their vehicle will develop the described concern. To determine if the information applies, customers should contact their nearest authorized Mazda dealership. Mazda North American Operations reserves the right to alter the specifications and contents of this bulletin without obligation or advance notice. All rights reserved. No part of this bulletin may be reproduced in any form or by any means, electronic or mechanical---including photocopying and recording and the use of any kind of information storage and retrieval system ---without permission in writing.

(MODE)	(MODE)	(MODE)	(PER)
CPP (VOLT)	CPP/PNP (MODE)	DIS_EMD (METER)	ECT (TEMP)
ECT (VOLT)	ECT2_V (VOLT)	EG_RUN_TIME (TIME)	ENG_CL_V_POS (ANGL)
ENG_CL_V_POS_R (ANGL)	ENG_EX_FLW (NUM)	ENG_FRCTN_PER (PER)	EOL (DIST)
EOP (PRESS)	EOT2 (TEMP)	EQ_RAT11 (NUM)	EQ_RAT11_DSD (NUM)
ETC_ACT (ANGL)	ETC_DSD (ANGL)	ETC_DSD (PER)	EVAPCP # (PER)
EVAPCV # (MODE)	FAN1 # (MODE)	FAN2 # (MODE)	FAN3 # (MODE)
FAN_DUTY (PER)	FAN_DUTY # (MODE)	FCL (MODE)	FIA (NUM)
PS1	PS2	PS_DUTY	PS3

Electronic Throttle Control Actual

CONSUMER NOTICE: The information and instructions in this bulletin are intended for use by skilled technicians. Mazda technicians utilize the proper tools/equipment and take training to correctly and safely maintain Mazda vehicles. These instructions should not be performed by "do-it-yourselfers." Customers should not assume this bulletin applies to their vehicle or that their vehicle will develop the described concern. To determine if the information applies, customers should contact their nearest authorized Mazda dealership. Mazda North American Operations reserves the right to alter the specifications and contents of this bulletin without obligation or advance notice. All rights reserved. No part of this bulletin may be reproduced in any form or by any means, electronic or mechanical---including photocopying and recording and the use of any kind of information storage and retrieval system ---without permission in writing.