

Product Improvement



ENTEGR A
COACH®

P005-17
Job Code 9203365
Series/Flat Rate 2 Hrs.

Date of Publication March 2018

REQUIRES PARTS ORDER

ACTION

Extra support plates to Front leveling jacks.

AFFECTED UNITS

2016-2018 Aspire Class A Motorhomes reporting issue

PARTS KIT P005-17JME

Note: Kit can only be ordered using the order form included with this bulletin.

- 20 - Bolts 1/2-13 x 1-1/2" long GR 5
- 20 - Flatwashers 1/2" ID GR 5
- 20 - Lock nuts, Flanged 1/2-13 GR 5
- 2 - Steel support plates/ brackets



Misc. Tools and Supplies

Torque Wrench (ft/lbs), 3/4" open end wrench, 3/4" impact socket, impact driver, small level, floor jack, side cutters or a utility knife, utility light, safety glasses, 4 wire ties

REPAIR INSTRUCTIONS

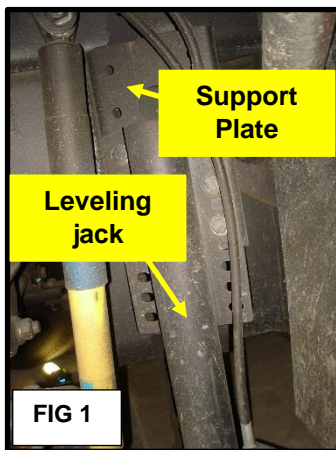


FIG 1: Driver Side Front Leveling jack mounted to existing support plate.

FIG 2: Turn the front tire all the way to one side in order to gain access to the jack leg. Place a floor jack under the leveling jack pad to support it when bolts are removed.

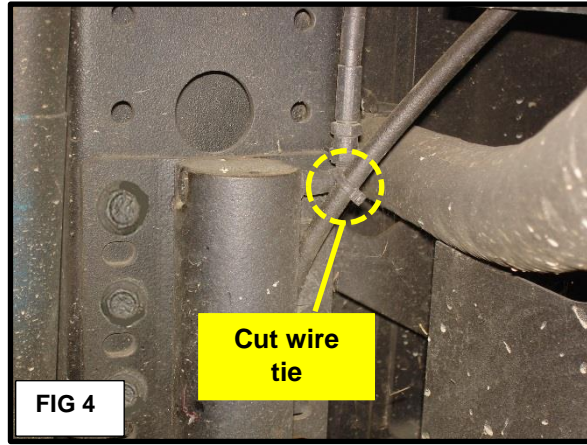
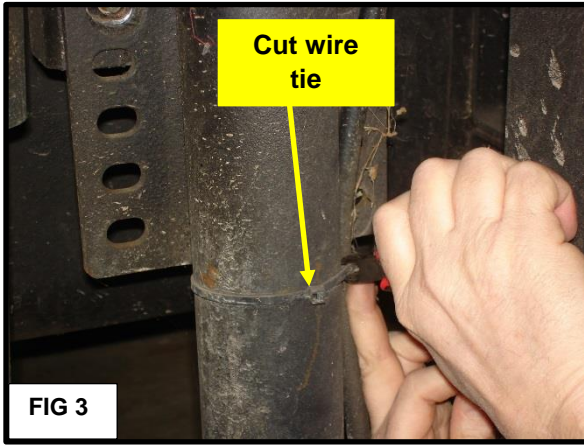


FIG 3: Cut wire tie holding the hydraulic line to the jack leg. Use side cutters or a utility knife.

FIG 4: Cut the wire tie at the top of the jack leg.

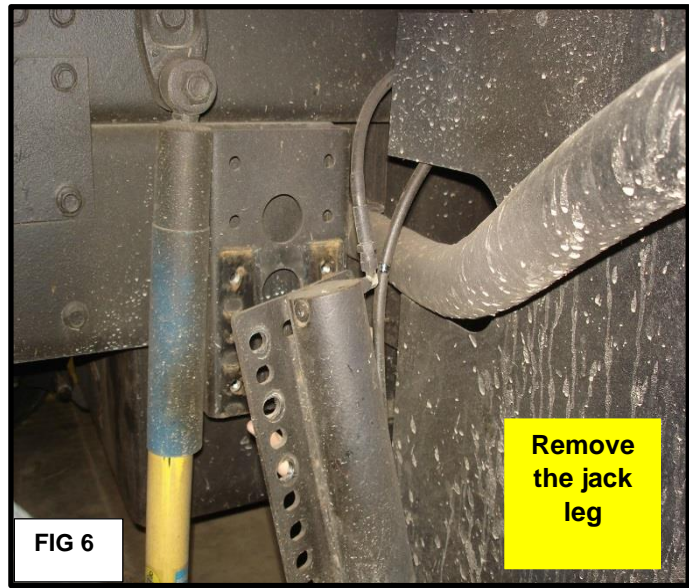
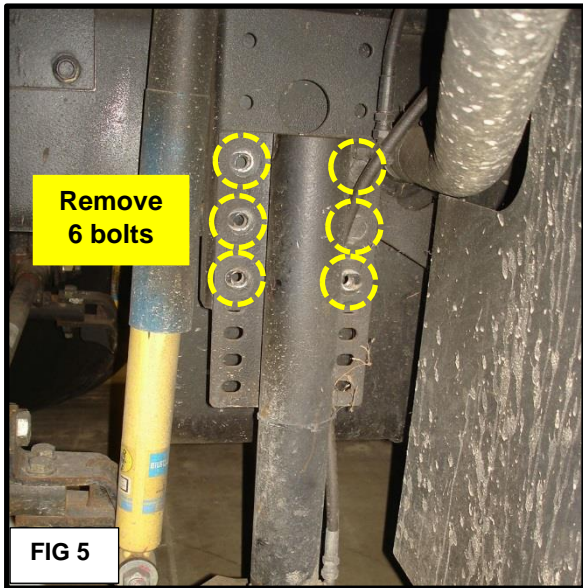


FIG 5: Remove 6 bolts holding the jack leg to the support plate.

Use the impact gun and the 3/4" impact socket on the front, and 3/4" wrench on the back side.

FIG 6: Remove the jack leg from the support plate temporarily.

BE VERY CAREFUL WITH THE HYDRAULIC LINES ATTACHED TO THE JACK LEG.

NOTE: USE ONLY NEW HARDWARE FOR THE INSTALLATION. DISCARD OLD HARDWARE.

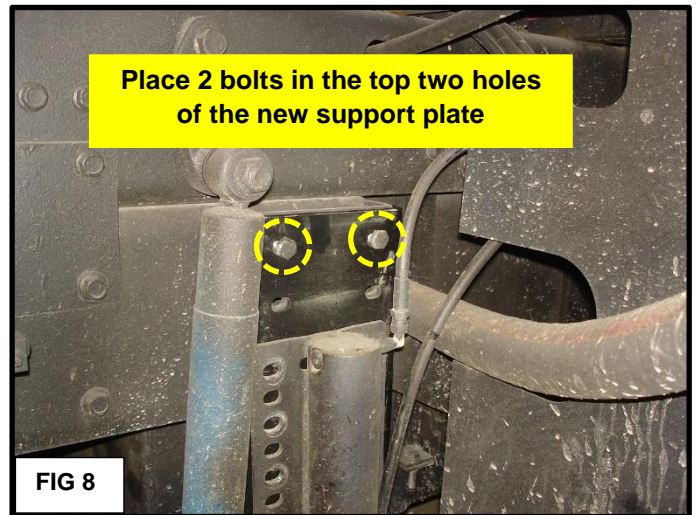
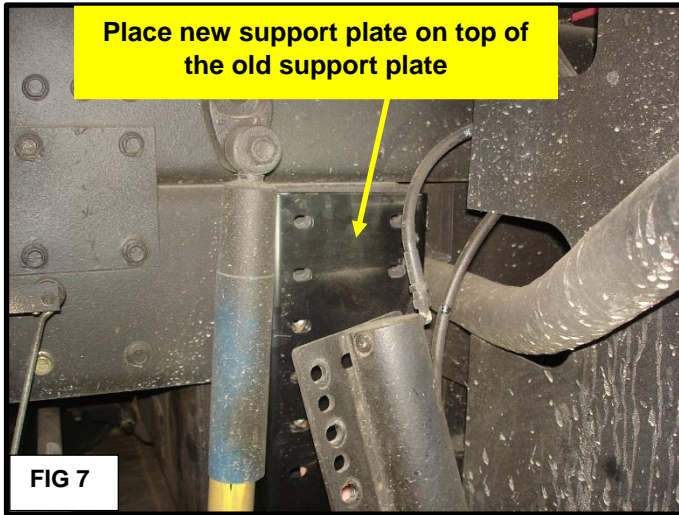


FIG 7: Place one of the new support plates (from the kit) on top of the old support plate. Line up all the holes in the new plate with all the holes in the old plate. New plate is longer providing more support to the jack leg.

FIG 8: Install 2 new 1/2" bolts (with washers) in the top 2 holes of the new support plate. Put two 1/2" lock nuts on the back side of these bolts but leave them loose until all bolts are installed.

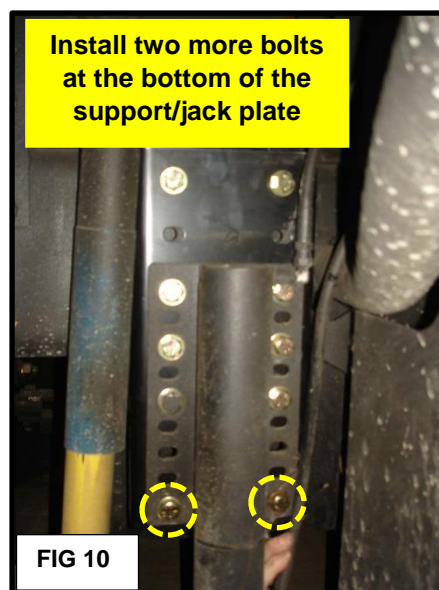
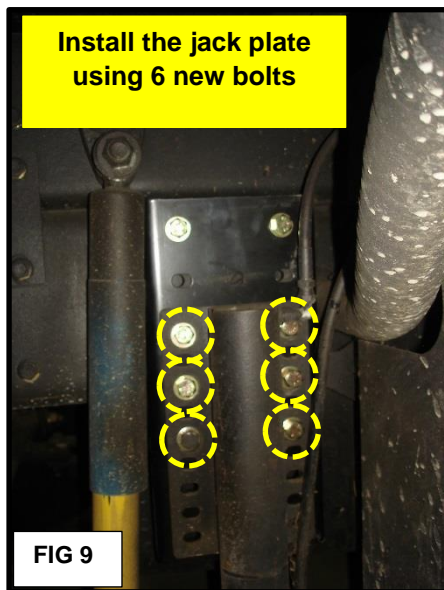


FIG 9: Install the jack leg and plate to the support bracket with 6 new bolts and flat washers. Nuts may be already welded behind the support plate for the 6 bolt locations for the jack plate. If they are not, the 6 new flange nuts included in the parts kit must be installed behind the support plate.

Do not completely tighten all the bolts until jack leg has been leveled.

FIG 10: Install 2 more bolts with washers in the very bottom holes. Install 2 lock nuts on these bolts on the back side of the support bracket. **Do not completely tighten all the bolts until jack leg has been leveled.**

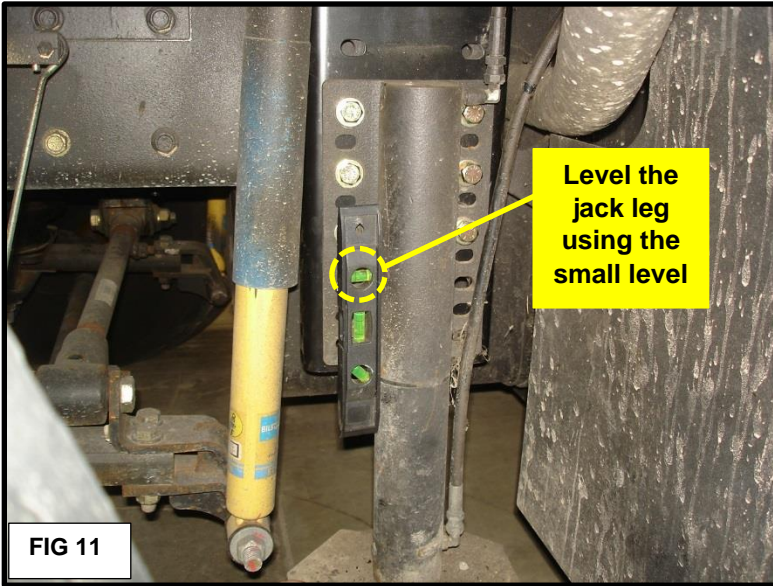


FIG 11: Place a small level on the jack leg.
Position the jack leg so it is level to the ground.
Tighten the jack plate bolts to hold it in this position.

AFTER LEVELING: ALL BOLTS CAN BE TIGHTENED.

Use the 3/4" impact socket and driver along with the 3/4 wrench.

Top 2 and bottom 2 nuts will require the 3/4 wrench on the backside of the plate.

(If nuts on the jack plates are **welded** in place (6 driver side, 6 passenger side), the 3/4 wrench is not required)

If nuts have to be installed for **all** 20 bolts on the support plates, then a 3/4 wrench must be used for **all** 20 nuts. (10 per side)

SET TORQUE WRENCH TO FOOT POUNDS AND TORQUE ALL BOLTS TO 57 FT/LBS.
(For any nuts not welded; the 3/4 wrench will be required to hold the nuts while torquing)

REPEAT THIS ENTIRE PROCEDURE ON THE PASSENGER SIDE OF THE VEHICLE!