



DATE: 3-28-18

APPLIES TO: This service bulletin applies to 2010 through 2018 model year MM and K2 model motor home chassis built between April 2, 2009 through April 19, 2017.

CONDITION: Spring washers may be subject to cracking

CORRECTION: Replace cracked spring washers

LABOR ALLOCATION: 1 hrs.

CLASSIFICATION: V

PARTS NEEDED:

<u>QTY</u>	<u>Part Number</u>	<u>Description</u>
1	S-2618-001	Service kit, 1253 Suspension Flat Washer

Kit # S-2618-001 Contains:

<u>QTY</u>	<u>Part Number</u>	<u>Description</u>
2	2571	Washer, Flat
1	TSB18-250-001	Instruction Document

GENERAL INSTRUCTIONS:

Thoroughly review entire service bulletin before starting work. If there are questions or concerns with steps defined in this service bulletin, contact Spartan Motors USA, Inc. Customer & Product Support Group.

All applicable industry safety standards must be followed when performing work identified in this procedure.

STEP-BY-STEP INSTRUCTIONS:

NOTE: This procedure can be performed with vehicle on the ground and suspension at ride height.

Service Bulletins are intended for use by Professional Technicians only. They are written to guide Professional Technicians in performing service to vehicles of specific nature in conjunction with industry standards. Professional Technicians should be appropriately trained on industry standards and have the tools and equipment to perform procedures safely and properly.



1. Follow normal maintenance and safety procedures to gain access to the front hangers. **Note: Dis-assemble and re-assemble one side at a time.** Tires do not need to be off ground.
2. On the left side (Drivers) inspect the spring washer, if cracked remove nut and replace spring washer with crown out towards nut. Re-install the nut and torque to 525 lbf-ft. Refer to FIG. 2-1.

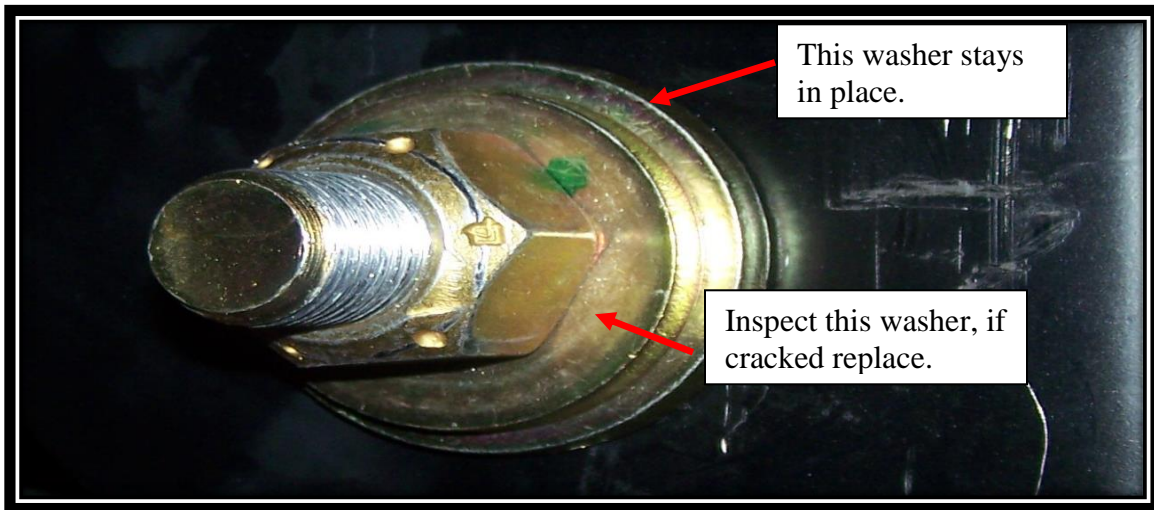


FIG. 2-1

3. On right side (passenger) shown below, inspect spring washer, if cracked remove nut and replace spring washer with crown out towards nut. Re-install nut and torque to 525 lbf-ft. Refer to FIG. 2-2.

Service Bulletins are intended for use by Professional Technicians only. They are written to guide Professional Technicians in performing service to vehicles of specific nature in conjunction with industry standards. Professional Technicians should be appropriately trained on industry standards and have the tools and equipment to perform procedures safely and properly.

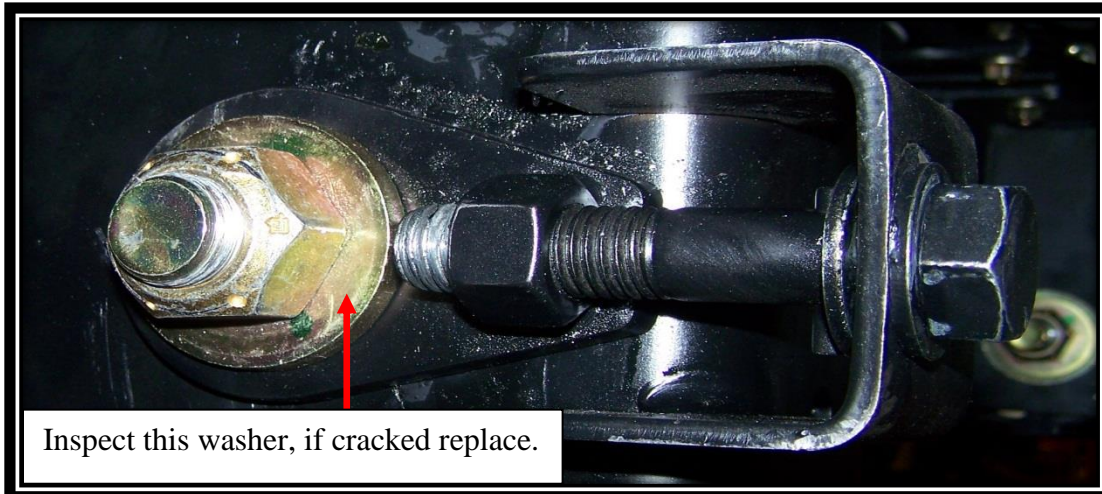


FIG. 2-2

Note: It is important that suspension be at ride height when nuts are torqued.

Service Bulletins are intended for use by Professional Technicians only. They are written to guide Professional Technicians in performing service to vehicles of specific nature in conjunction with industry standards. Professional Technicians should be appropriately trained on industry standards and have the tools and equipment to perform procedures safely and properly.