

March 28, 2018

Version 2

Capless Fuel Shutter Set (Mis-Fuel Inhibit Device) Is Frozen

Supersedes 18-007, dated February 9, 2018, to revise the information highlighted in **yellow**.

AFFECTED VEHICLES

Year	Model	Trim	VIN Range
2017	MDX	ALL	ALL
	MDX Sport Hybrid		
2018	MDX		

REVISION SUMMARY

In **WARRANTY CLAIM INFORMATION**, the **FAILED PART NUMBER** has been updated.

SYMPTOM

The client is unable to insert the fuel nozzle into the filler neck and fuel the vehicle in cold weather.

PROBABLE CAUSE

Water or moisture has entered the fueling area and frozen the capless fuel shutter set in the fuel filler neck.

CORRECTIVE ACTION

Replace the capless fuel shutter set. Install the updated fuel filler lid and apply the fuel filler caution labels.

WARRANTY CLAIM INFORMATION

The normal warranty applies.

Operation Number	Description	Flat Rate Time	Defect Code	Symptom Code	Template ID	Failed Part Number
3101U2	Replace the capless fuel shutter set. Install fuel filler lid and apply the fuel filler caution labels.	0.7 hr	03214	03217	B18007A	17060-TG7-A01

Skill Level: Repair Technician

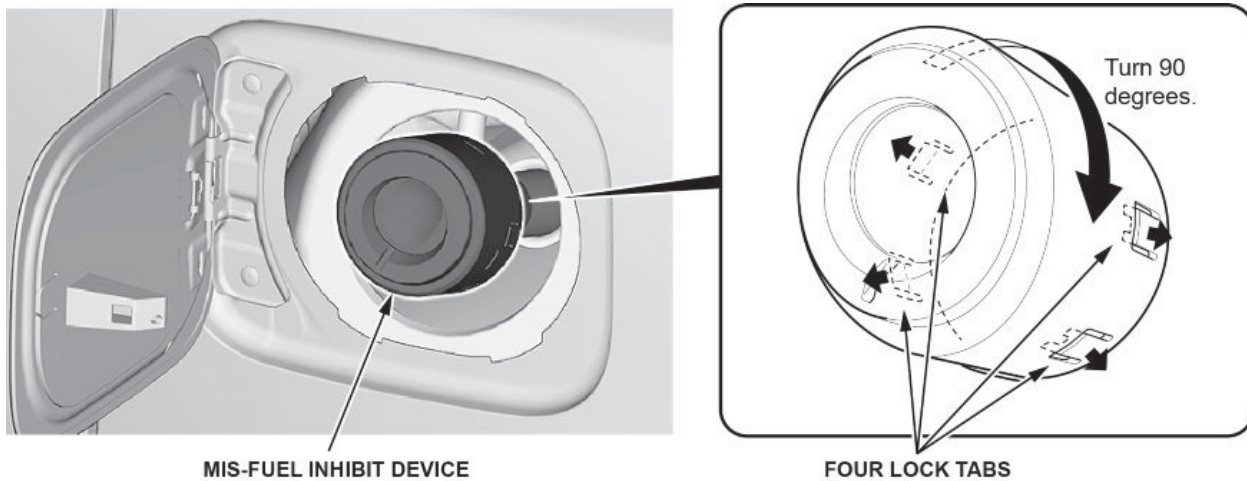
CLIENT INFORMATION: The information in this bulletin is intended for use only by skilled technicians who have the proper tools, equipment, and training to correctly and safely maintain your vehicle. These procedures should not be attempted by "do-it-yourselfers," and you should not assume this bulletin applies to your vehicle, or that your vehicle has the condition described. To determine whether this information applies, contact an authorized Acura automobile dealer.

PARTS INFORMATION

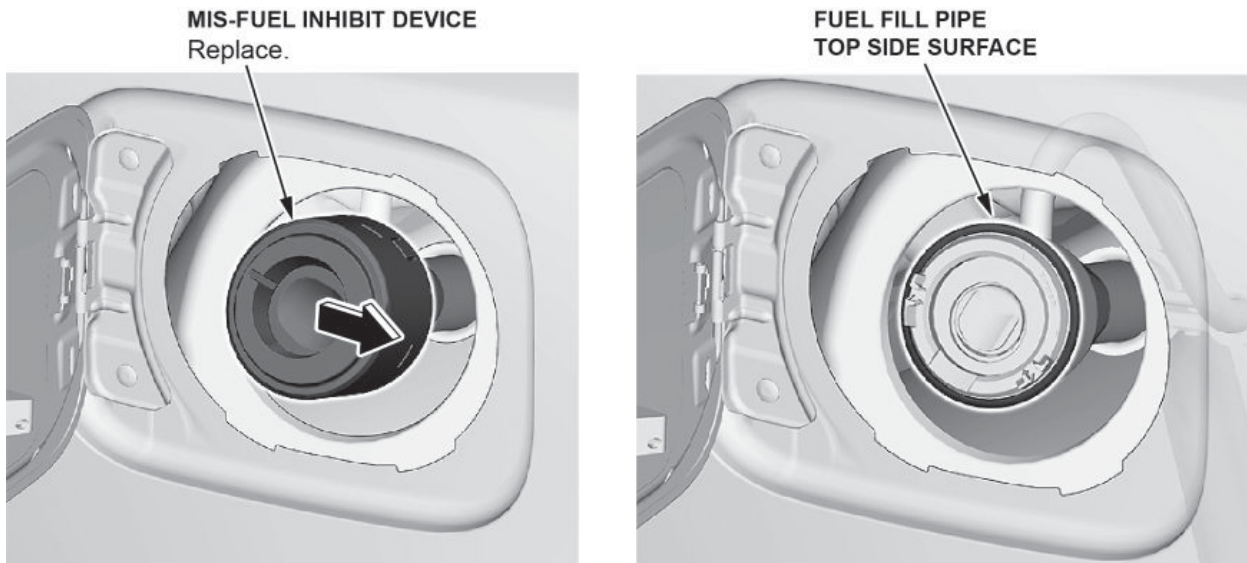
Part Name	Part Number	Quantity
Capless Information Label	17669-TG7-A01	1
Fuel Filler Caution Label	17669-R9S-A10	1
Fuel Filler Lid	74481-TZ5-A02	1
Capless Shutter Set (Mis-Fuel Inhibit Device)	06160-TG7-A01	1

REPAIR PROCEDURE

1. Remove the mis-fuel inhibit device by prying out the four lock tabs and turning the assembly 90 degrees.



2. Tilt the mis-fuel inhibit device towards the rear of the vehicle, as shown, to remove it from the fuel fill pipe.



NOTE

Be careful not to damage the fuel fill pipe or the main flap unit (fuel fill pipe top side surface); they **do not** need to be replaced at this time.

3. Install the new mis-fuel inhibit device.

4. Apply the fuel filler caution labels to the new fuel filler lid cover as shown. Make sure the new lid is clean and grease-free, especially on the surfaces where the labels will be applied.

P/N 17669-TG7-A01



P/N 17669-R9S-A10



5. Remove the original fuel filler lid cover.

5.1. Lift the fuel filler lid locking tab.



5.2. Slide the lid towards the fuel door hinge.



5.3. Slide the lid until the four tabs disengage from the slots in the fuel door.



6. Installation of the fuel filler lid is the reverse of removal. Verify all the tabs are engaged, and slide the lid away from the fuel door hinge until it clicks. This indicates the fuel filler lid cover is secured and correctly installed.



7. Make sure the fuel fill door closes and latches without contact or interference from the mis-fuel inhibit device and surrounding area.
8. Make sure the fuel fill door release works correctly when using the fuel fill door release button.

END