

**MODEL:** Karma Revero**Date:** October 2017**TITLE:** Dash Stitch Impression Remedy**Revised:** February 2018**PRIORITY:** On Complaint**APPLICABILITY:** MY17 and MY18 Revero**MARKET REGION:** North America**PURPOSE:** Remedy for the dash pad stitch impression on the door panel.

The front door panels may exhibit a stitch impression on the inner surface. A special procedure has been developed to remedy this concern.

The following parts and tools will be required to complete this procedure:

- Cutting pliers and Rotary tool (Dremmel)
- Felt tape (Coroplast Black Tape, TESA auto woven 51026 tape or similar)
- Heat gun (capable of minimum of 400°F) as shown below for example.
- Infrared Thermometer
- Dual ball wooden roller (source locally - Karma Automotive will supply to current retailers)
- Leather cleaner (Recommended Meguiar's Gold Class Rich Leather) and a microfiber cloth
- Camera or suitable device for images

Please attach a clear image of the before repair and after repair to a TSS case.



Karma Automotive Bulletins and service documents are intended for use by experienced and trained Technicians. If you lack the skills, tools, equipment and a suitable workshop for any procedure described in this document, we suggest you leave such repairs to a Karma retailer and service provider. See your service provider for advice on whether your vehicle may benefit from the information contained within this document. The information contained in the Karma Bulletin is accurate at the date of publication. However, Karma Automotive regularly updates technical information. Please check with your Karma Automotive Retailer and Karma Automotive service provider that the bulletin you intend to use contains the latest available information.

**MODEL:** Karma Revero

**Date:** October 2017

**Revised:** February 2018

**TITLE:** Dash Stitch Impression Remedy

The door panel impression is shown when the door is open, driver door shown (fig.1a).

This *may* be found on both doors, in which case the procedure will involve both sides of the dash pad.

This condition is often only seen on one door panel.



fig.1

To remedy the impressions on the door begin by removing the DIS surround and the front left dash pad (fig.2a and b).



fig.2a



fig.2b

Karma Automotive Bulletins and service documents are intended for use by experienced and trained Technicians. If you lack the skills, tools, equipment and a suitable workshop for any procedure described in this document, we suggest you leave such repairs to a Karma retailer and service provider. See your service provider for advice on whether your vehicle may benefit from the information contained within this document. The information contained in the Karma Bulletin is accurate at the date of publication. However, Karma Automotive regularly updates technical information. Please check with your Karma Automotive Retailer and Karma Automotive service provider that the bulletin you intend to use contains the latest available information.

**MODEL:** Karma Revero

**Date:** October 2017

**TITLE:** Dash Stitch Impression Remedy

**Revised:** February 2018

On the reverse side of the panel, the locator will be modified (fig 3a)

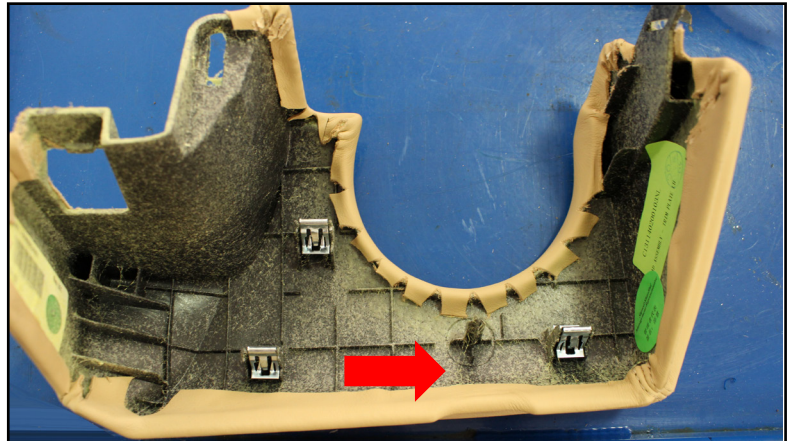


fig. 3a

Trim off the inboard side (as installed) rib on the 4-way locator as shown. (fig 3b,c)  
It should now have 3 ridges.

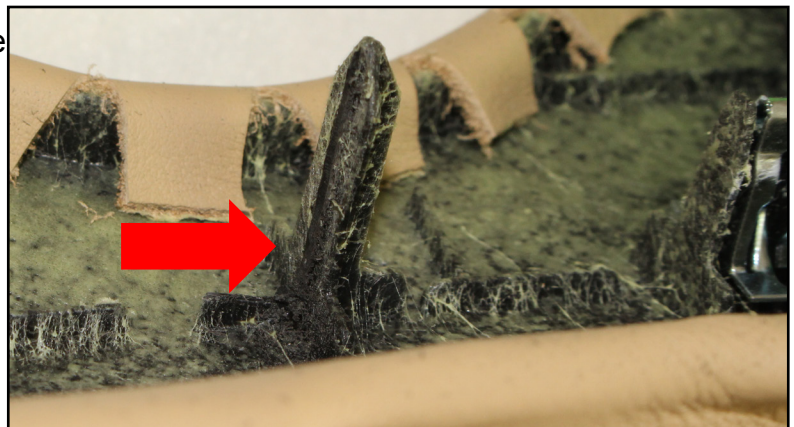


fig. 3b

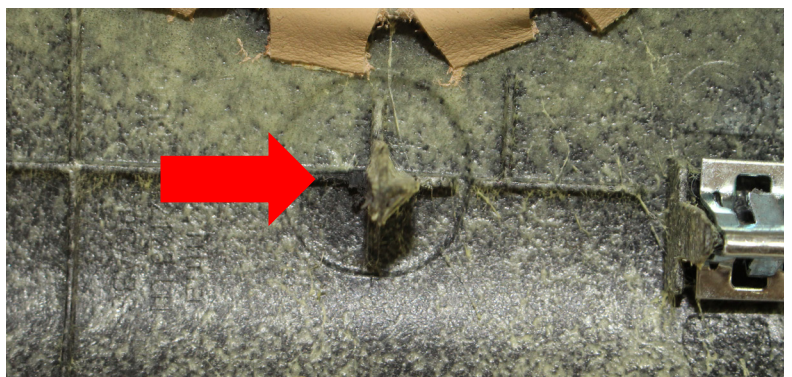


fig. 3c

Karma Automotive Bulletins and service documents are intended for use by experienced and trained Technicians. If you lack the skills, tools, equipment and a suitable workshop for any procedure described in this document, we suggest you leave such repairs to a Karma retailer and service provider. See your service provider for advice on whether your vehicle may benefit from the information contained within this document. The information contained in the Karma Bulletin is accurate at the date of publication. However, Karma Automotive regularly updates technical information. Please check with your Karma Automotive Retailer and Karma Automotive service provider that the bulletin you intend to use contains the latest available information.

**MODEL:** Karma Revero

**Date:** October 2017

**TITLE:** Dash Stitch Impression Remedy

**Revised:** February 2018

The outboard side of the panel has tabs, Trim off two (2) to three (3) mm of material as shown. (fig. 4a before ,b, c; after)

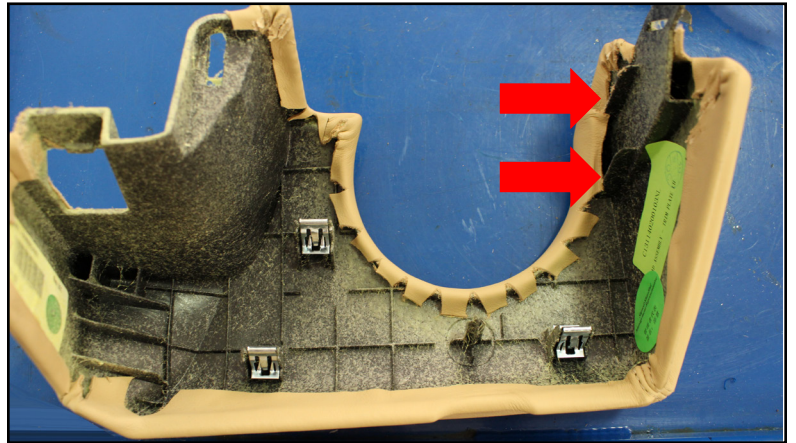


fig. 4a; before



fig. 4b



fig. 4c; after

Karma Automotive Bulletins and service documents are intended for use by experienced and trained Technicians. If you lack the skills, tools, equipment and a suitable workshop for any procedure described in this document, we suggest you leave such repairs to a Karma retailer and service provider. See your service provider for advice on whether your vehicle may benefit from the information contained within this document. The information contained in the Karma Bulletin is accurate at the date of publication. However, Karma Automotive regularly updates technical information. Please check with your Karma Automotive Retailer and Karma Automotive service provider that the bulletin you intend to use contains the latest available information.

**MODEL:** Karma Revero

**Date:** October 2017

**TITLE:** Dash Stitch Impression Remedy

**Revised:** February 2018

Apply 3mm felt tape to the instrument panel retainer on outboard side of the 4-way locator (fig. 5a, b,c).

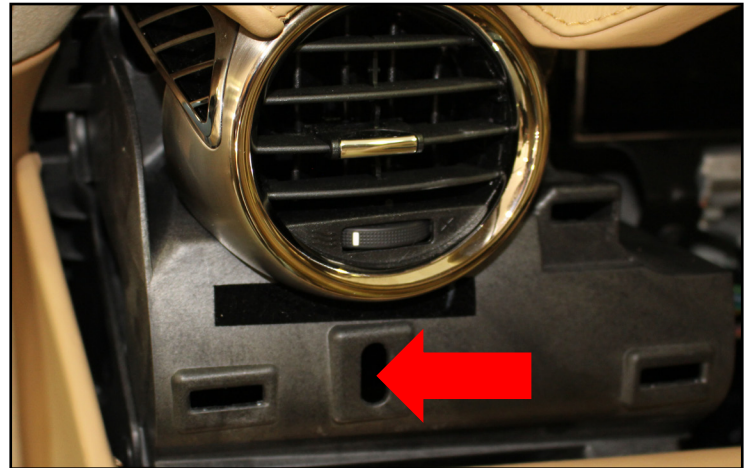


fig. 5a

A pick tool is used to apply pressure to secure the back side of the tape (fig 5b).



fig. 5b



fig.5c

Reinstall the trim and DIS shroud, and verify there is no contact between the door panel and dash.

**Note:** Upon reinstall of the trim, assure locator is seated into receiving vertical slot as far 'inboard' as possible before push-clips are secured.

Karma Automotive Bulletins and service documents are intended for use by experienced and trained Technicians. If you lack the skills, tools, equipment and a suitable workshop for any procedure described in this document, we suggest you leave such repairs to a Karma retailer and service provider. See your service provider for advice on whether your vehicle may benefit from the information contained within this document. The information contained in the Karma Bulletin is accurate at the date of publication. However, Karma Automotive regularly updates technical information. Please check with your Karma Automotive Retailer and Karma Automotive service provider that the bulletin you intend to use contains the latest available information.

**MODEL:** Karma Revero

**Date:** October 2017

**Revised:** February 2018

**TITLE:** Dash Stitch Impression Remedy

After verifying the fit is correct (fig 6a), open the door and examine the impression left by the stitching. Apply heat to the panel (not to exceed 230°C from the heat gun).

Use the roller, with light pressure on the leather, apply heat and remove heat while rolling, after several passes the impressions will minimize or vanish altogether.



fig. 6a

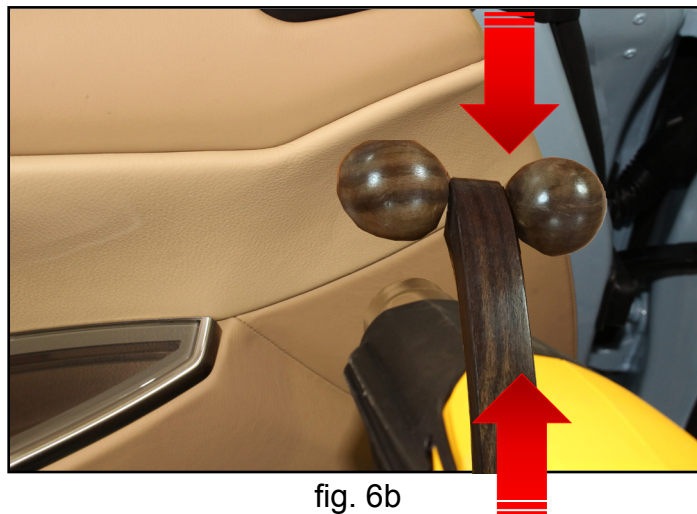


fig. 6b

Karma Automotive Bulletins and service documents are intended for use by experienced and trained Technicians. If you lack the skills, tools, equipment and a suitable workshop for any procedure described in this document, we suggest you leave such repairs to a Karma retailer and service provider. See your service provider for advice on whether your vehicle may benefit from the information contained within this document. The information contained in the Karma Bulletin is accurate at the date of publication. However, Karma Automotive regularly updates technical information. Please check with your Karma Automotive Retailer and Karma Automotive service provider that the bulletin you intend to use contains the latest available information.

**MODEL:** Karma Revero

**Date:** October 2017

**TITLE:** Dash Stitch Impression Remedy

**Revised:** February 2018

The right hand side trim pad is repaired in the same manner. Remove the central console jewel, and the trim panel. These come off by pulling forward, some clips have strong tension.

**NOTE:** Mark the connectors for correct reinstallation, if they are not already marked. These can be reinstalled to the wrong switch.(fig .7a)

Shown for example- the central trim being removed (fig 7a, 7b).

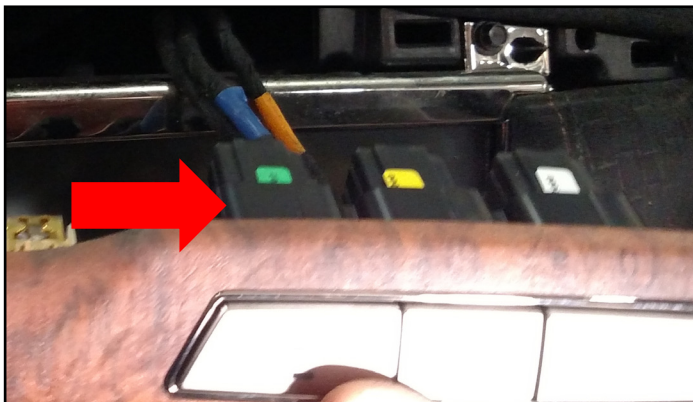


fig. 7a



fig. 7b

Trim the inboard side of the central locator pin (fig.7c), shown before trimming.

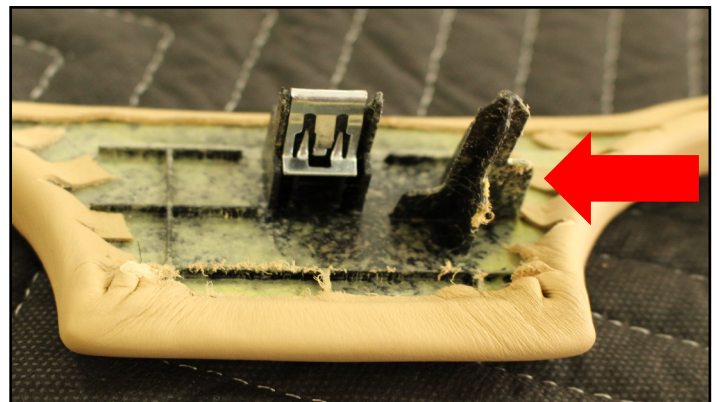


fig. 7c

Karma Automotive Bulletins and service documents are intended for use by experienced and trained Technicians. If you lack the skills, tools, equipment and a suitable workshop for any procedure described in this document, we suggest you leave such repairs to a Karma retailer and service provider. See your service provider for advice on whether your vehicle may benefit from the information contained within this document. The information contained in the Karma Bulletin is accurate at the date of publication. However, Karma Automotive regularly updates technical information. Please check with your Karma Automotive Retailer and Karma Automotive service provider that the bulletin you intend to use contains the latest available information.

**MODEL: Karma Revero****Date: October 2017****Revised: February 2018****TITLE: Dash Stitch Impression Remedy**

Trim the locator as shown (fig 8a, 8b) and use a dremmel to clean and finalize the cutting.

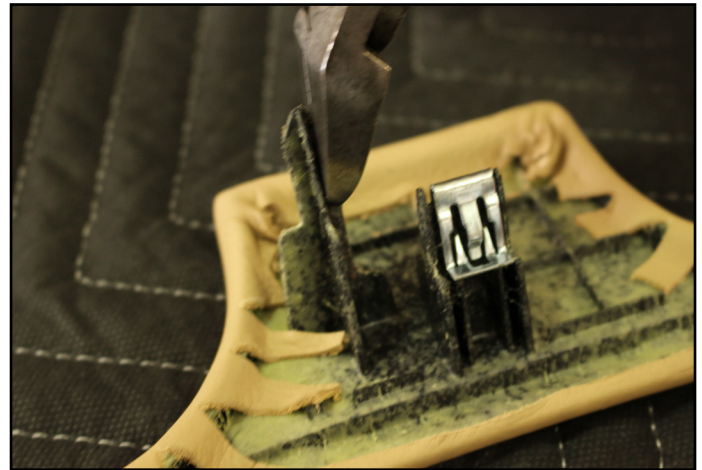


fig. 8a

This is after the modification (fig. 8b).

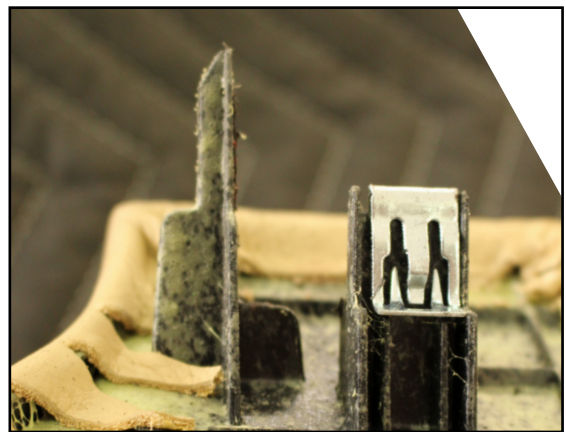


fig. 8b

Karma Automotive Bulletins and service documents are intended for use by experienced and trained Technicians. If you lack the skills, tools, equipment and a suitable workshop for any procedure described in this document, we suggest you leave such repairs to a Karma retailer and service provider. See your service provider for advice on whether your vehicle may benefit from the information contained within this document. The information contained in the Karma Bulletin is accurate at the date of publication. However, Karma Automotive regularly updates technical information. Please check with your Karma Automotive Retailer and Karma Automotive service provider that the bulletin you intend to use contains the latest available information.

**MODEL:** Karma Revero

**Date:** October 2017

**TITLE:** Dash Stitch Impression Remedy

**Revised:** February 2018

Cut the two (2) ribs on outboard side of the trim plate 2 to 3mm as shown (fig 9a, b)

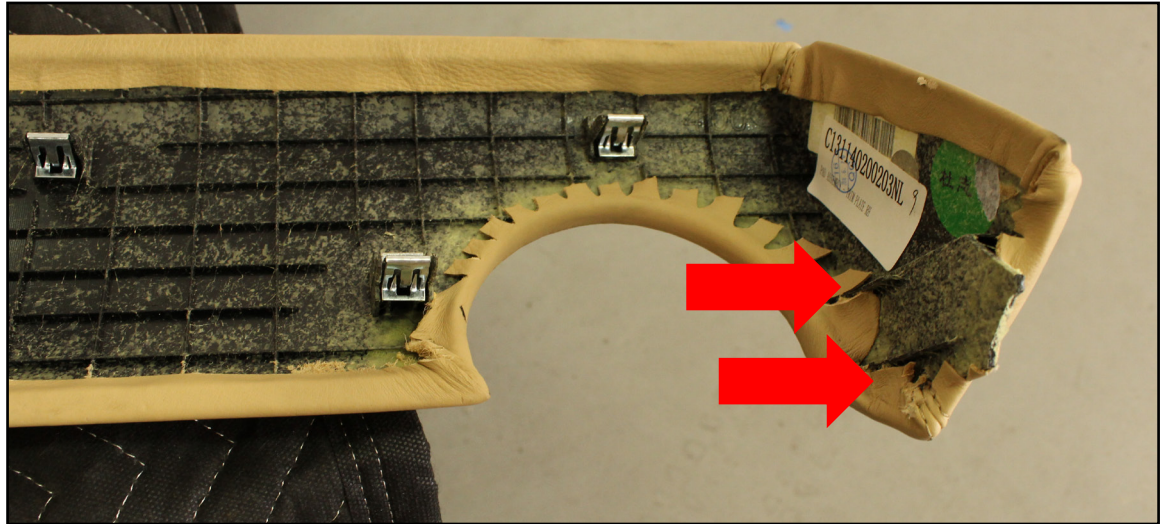


fig. 9a

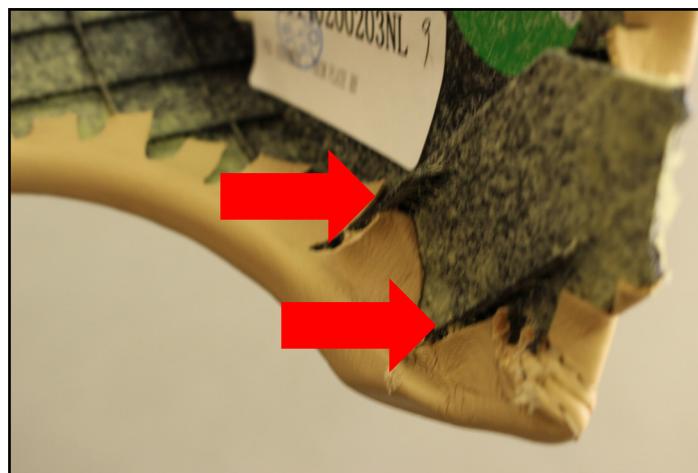


fig. 9b

Karma Automotive Bulletins and service documents are intended for use by experienced and trained Technicians. If you lack the skills, tools, equipment and a suitable workshop for any procedure described in this document, we suggest you leave such repairs to a Karma retailer and service provider. See your service provider for advice on whether your vehicle may benefit from the information contained within this document. The information contained in the Karma Bulletin is accurate at the date of publication. However, Karma Automotive regularly updates technical information. Please check with your Karma Automotive Retailer and Karma Automotive service provider that the bulletin you intend to use contains the latest available information.

**MODEL:** Karma Revero

**Date:** October 2017

**TITLE:** Dash Stitch Impression Remedy

**Revised:** February 2018

Apply 3mm felt tape to the dash panel retainer on right side of the 4-way locator as shown (fig. 10a, b).

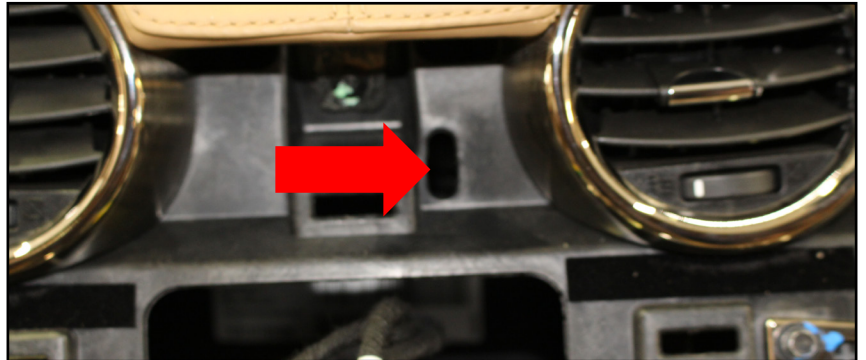


fig. 10a

A pick tool is used to apply pressure to secure the back side of the tape (fig. 10b).

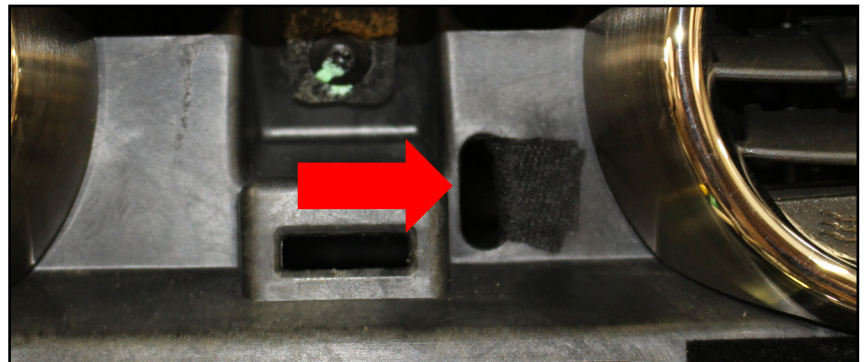


fig. 10b

**Note:** Upon reinstall of the trim, assure locator is seated into receiving vertical slot as far 'inboard' as possible before push-clips are secured.

Reinstall the trim, and verify there is no contact between the door panel and dash.

Any visible gap around Power Mode button can be remedied by pushing the RH trim towards passenger side to close the gap (fig. 10c).



fig. 10c

Karma Automotive Bulletins and service documents are intended for use by experienced and trained Technicians. If you lack the skills, tools, equipment and a suitable workshop for any procedure described in this document, we suggest you leave such repairs to a Karma retailer and service provider. See your service provider for advice on whether your vehicle may benefit from the information contained within this document. The information contained in the Karma Bulletin is accurate at the date of publication. However, Karma Automotive regularly updates technical information. Please check with your Karma Automotive Retailer and Karma Automotive service provider that the bulletin you intend to use contains the latest available information.

**MODEL:** Karma Revero

**Date:** October 2017

**TITLE:** Dash Stitch Impression Remedy

**Revised:** February 2018

Again inspect the door and use the heat gun and roller to the affected area to relieve the impressions on the door panel (fig 11a, b).

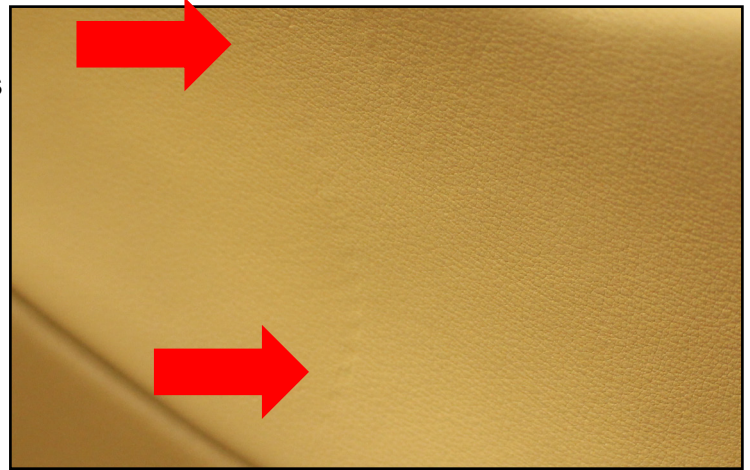


fig. 11a

After completion of procedure, and no marks are visible. Clean the affected area on both door panels with leather cleaner and a microfiber cloth.

Apply Meguiar's Leather conditioner to a microfiber cloth and gently clean the whole area. Ensure to wipe well and not leave a shine.



fig. 11b

If attempts to complete the procedure and repair the impressions on the door panel prove unsuccessful replace the door panel as needed.

Please attach a clear image of the before repair and after repair to a TSS case for approval before replacing door panel.

Karma Automotive Bulletins and service documents are intended for use by experienced and trained Technicians. If you lack the skills, tools, equipment and a suitable workshop for any procedure described in this document, we suggest you leave such repairs to a Karma retailer and service provider. See your service provider for advice on whether your vehicle may benefit from the information contained within this document. The information contained in the Karma Bulletin is accurate at the date of publication. However, Karma Automotive regularly updates technical information. Please check with your Karma Automotive Retailer and Karma Automotive service provider that the bulletin you intend to use contains the latest available information.



# Technical Service Bulletin

**TB-17-82-26**

**MODEL:** Karma Revero

**Date:** October 2017

**Revised:** February 2018

**TITLE:** Dash Stitch Impression Remedy

**PARTS REQUIRED:**

PART NUMBER	DESCRIPTION	QTY
N/A		

**SHOP SUPPLIES:**

DESCRIPTION
Leather cleaner and microfiber cloth

**SPECIAL TOOLS:**

DESCRIPTION
Hand Roller

**CAUSAL PART:**

PART NUMBER	DESCRIPTION
C131140200203CC	Pad Assembly - Trim

**LABOR CODES:**

CODE	DESCRIPTION	TIME	DEFECT CODE
80-20-14-05	LH (Driver) Door Trim Impression Remedy	0.4	80-20-14-13
80-20-13-05	RH Door Trim Impression Remedy	0.5	80-20-13-13

**SUBLET:**

CODE	DESCRIPTION	AMOUNT
N/A		

**WARRANTY DISPOSITION:** This repair is covered under the New Vehicle Limited Warranty, in effect for five (5) years from the in-service date with no mileage limitation.

Karma Automotive Bulletins and service documents are intended for use by experienced and trained Technicians. If you lack the skills, tools, equipment and a suitable workshop for any procedure described in this document, we suggest you leave such repairs to a Karma retailer and service provider. See your service provider for advice on whether your vehicle may benefit from the information contained within this document. The information contained in the Karma Bulletin is accurate at the date of publication. However, Karma Automotive regularly updates technical information. Please check with your Karma Automotive Retailer and Karma Automotive service provider that the bulletin you intend to use contains the latest available information.