



<b>Countries:</b>	CANADA, UNITED STATES, MEXICO	<b>Document ID:</b>	IK1201398
<b>Availability:</b>	ISIS, Bus ISIS, FleetISIS, IsSIR	<b>Revision:</b>	4
<b>Major System:</b>	ENGINES	<b>Created:</b>	10/19/2017
<b>Current Language:</b>	English	<b>Last Modified:</b>	2/2/2018
<b>Other Languages:</b>	NONE	<b>Author:</b>	Michael Sokolowski
<b>Viewed:</b>	667		

[Less Info](#)

Hide Details

Coding Information

<b>Copy Link</b> 	<b>Copy Relative Link</b> 	<b>Bookmark</b>  <a href="#">View My Bookmarks</a>	<b>Add to Favorites</b> 	<b>Print</b> 	<b>Provide Feedback</b> 	<b>Helpful</b>  7	<b>Not Helpful</b>  1
----------------------	-------------------------------	--	-----------------------------	------------------	-----------------------------	-------------------------	-----------------------------

**Title:** IC Bus with ISB Frequent Regeneration

**Applies To:** IC Bus ISB

## CHANGE LOG

Please refer to the change log text box below for recent changes to this article:

<ul style="list-style-type: none"> <li>02/02/2018 - Added temp differential test in step 2</li> <li>01/03/2018 - Due to Cummins software changes, removed ROA test (previously step 2)</li> <li>11/20/2017 - Added Cummins Insite info in step 2</li> <li>11/01/2017 - Typo corrected</li> <li>10/25/2017 - Initial Article Release</li> </ul>	 
--	------

## DESCRIPTION

This document will guide the user through resolving Frequent Regen issues on IC Bus with ISB 6.7.

## SYMPTOM(s)

**Diagnostic Trouble Code(s) & Dashboard Indicator Light(s):**

DTC/Light	Description
SPN 5397 FMI 31 ( <a href="#">FCAP</a> ) Cummins 3375	Aftertreatment Diesel Particulate Filter Regeneration Too Frequent - Condition Exists
SPN 5319 FMI 31 ( <a href="#">FCAP</a> ) Cummins 3376	DPF incomplete Regeneration
SPN 3251 FMI 16 ( <a href="#">FCAP</a> ) Cummins 1921	Aftertreatment Diesel Particulate Filter Differential Pressure - Data Valid But Above Normal Operating Range - Moderately Severe Level
SN 3251 FMI 0 ( <a href="#">FCAP</a> ) Cummins 1922	Aftertreatment Diesel Particulate Filter Differential Pressure - Data Valid But Above Normal Operating Range - Most Severe Level

**Customer Observations or Concerns:**

Frequent Regen

### **SPECIAL TOOL(s) / SOFTWARE**

Tool Description	Tool Number	Comments	Instructions
N/A			

[Tools Resource Center](#)

### **SERVICE PARTS INFORMATION**


Parts Catalog – [Click Here](#)

Kit Description	Part Number	Quantity Required	Notes
COVER ASSEMBLY	2602202C91	1	

### **DIAGNOSTIC STEP(s)**

**Possible Causes:**

1. Airbox boot seal to the hood compromised. Middle section may appear bent or folded in. The seal position looks off-centered from the hood.

 <b>WARNING:</b>	
<b>Enter Warning Here</b>	

<b>CAUTION:</b>	
<b>Enter Caution Here</b>	

Step	Action	Decision
1	<b>DIAGNOSTIC:</b> Is the vehicle experiencing too frequent regens?	<b>Yes.</b> Go to Step 2. <b>No.</b> Article does not apply

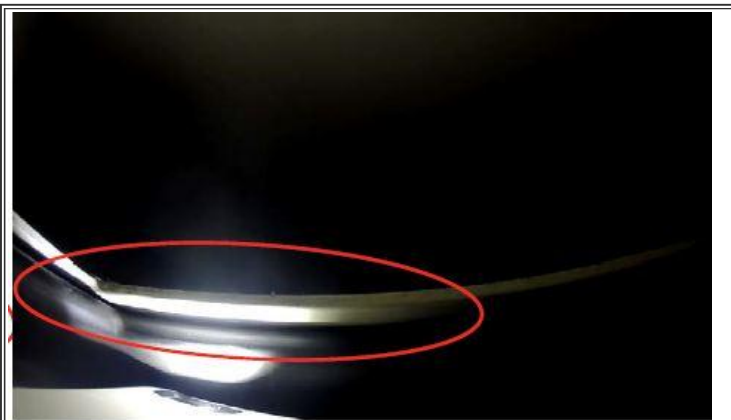
--	--	--

Step	Action	Decision
2	<p><b>DIAGNOSTIC:</b></p> <p>Use INSITE™ electronic service tool to monitor the compressor intake air temperature and ambient air temperature sensor values.                      Perform a road test with the engine at peak power and a vehicle speed of 48 km/h [30 mph] or greater.                      Record the compressor inlet temperature and the ambient air temperature.                      Calculate the differential temperature:                      Compressor inlet temp - ambient air temperature = differential temperature.                      Maximum Differential Temperature = 20°F</p> <p>Is the maximum temperature differential GREATER than 20F?</p>	<p><b>Yes.</b>                      Replace the cover assembly and retest.  <b>See Figure 1 and 2 below</b></p>
		<p><b>No.</b> Go to Step 3.</p>

Step	Action	Decision
3	<p><b>DIAGNOSTIC:</b></p> <p>With the hood in the fully latched position, inspect the accordion boot seal to hood.  <b>See Figure 1 and 2</b></p> <p>Is a gap present between the seal and hood?</p>	<p><b>Yes.</b>                      Replace the cover assembly.</p>
		<p><b>No.</b> Return to Fault Code Diagnostics</p>



**Figure 1: Gap between Boot seal and Hood**



**Figure 2: Hood misaligned with respect to Boot seal**

---

## **WARRANTY INFORMATION**

### **Warranty Claim Coding:**

Refer to the [Warranty Coding Manual](#) for Group and Noun Codes.

### **Standard Repair Time(s):**

Refer to the [SRT Manual](#) for Repair Times

---

## **OTHER RESOURCES**

[Master Service Information Site](#)

 Hide Details

**Feedback Information**

Viewed: 666  
 Helpful: 7  
 Not Helpful: 1

Staff ID	Client ID	Comments	Created Date
	DY35478	You received the following feedback From: Dy35478 - Steve Ziegler Email Address: steveziegler@selkinginternational.com Job Classification: SA003, Salesperson Dealer: SELKING INTERNATIONAL Feedback: Please define "too frequent regens" in step 1. How do we determine if a customer complaint of frequent Regen is valid?	2/4/2018 10:58:13 PM

Copyright © 2018 Navistar, Inc.